



RODEM[®]

SMART SANITARY PROCESSES

www.Rodem.com | (800) 543-7312

WASHDOWN PRODUCT OVERVIEW



- MIXING UNITS



Access instant hot water, when and where need it most. Choose from a variety of configurations of steam units, hot and cold water units, and hose stations.

- NOZZLES



Choose from the best performing nozzles in the industry. Our nozzles are designed to perform with precision under the most demanding conditions. Each nozzle is hand assembled and tested extensively before shipping.

- ADAPTERS



Hose adapters not only expand the configurations of hose-to-nozzle attachments, but they add versatility and longevity your wash down equipment.

- ATTACHMENTS



Our line of nozzle extension cleaning tools include the hydro swivel sweeper and drain cleaners. Both tools bring effective and powerful cleaning power to your facilities wash down routine.

- HOSES



We take extra measures to ensure the durability of our hoses. All hoses, are put through a rigorous series of in-house pressure and UV exposure tests. The result is a hose which surpasses federal NAHAD standards.

- PRE-RINSE



Our pre-rinse equipment caters to the needs of hotel and restaurant industries. Our pre-rinse nozzles have won multiple design awards, and have been recognized for their quality and water efficiency.

- OZONE



Transform your sanitizing and wash down routine with Strahman Ozone products. See why ozone is a powerful, chemical free, organic method of sanitizing for your facility.

Mixing Units

Steam and Cold Water Units

Access instant hot water in your facility through your steam line. This family of units features a specially designed blending chamber to thoroughly and evenly blend the steam and cold water.

Hot and Cold Water Units

Available in Bronze and Stainless Steel, these units thoroughly mix hot and cold water in any desired proportion.

STEAM AND COLD WATER UNITS



M-5000 TG

- Bronze Construction
- Temperature Gauge
- Steam Trap
- Maximum Temperature: 200° F/93° C
- Maximum Working Pressure: 150 psi



M-5000 TG HE

- **HIGH EFFICIENCY**
- Bronze Construction
- Temperature Gauge
- Steam Trap
- Hydraulically Efficient Design
- Over 20% Water Savings



M-5700 TG

- Stainless Steel Construction
- Wall-Mounted
- Temperature Gauge
- Steam Trap



M-5700 TS

- Bronze, brass and stainless Construction
- Thermostatically Controlled-Hydraulic Temperature gauge
- Steam Trap



M-144 SAFETY UNIT

- Bronze Construction
- Globe Valves
- Temperature Gauge
- Steam Trap
- Maximum Temperature: 200° F/93° C
- Maximum Working Pressure - 80 psi

HOT AND COLD WATER UNITS



M-159 TG

- Bronze Construction
- Temperature Gauge
- Hot and cold water blending chamber
- Maximum Temperature: 200° F/93° C
- Maximum Working Pressure: 150 psi



M-750 TG

- Stainless Steel Construction
- Temperature Gauge
- Hot and cold water blending chamber
- Maximum Temperature: 200° F/93° C
- Maximum Working Pressure: 150 psi



M-200 TS

- Bronze Construction
- Wall-Mounted Hose Station
- Hydraulic Temperature Gauge
- Stainless Steel Piston and Liner
- Output Temperature: 80° F-160° F
- Maximum Working Pressure: 125 psi



M-756

- Wall Mounted Hose Station
- Stainless Steel Construction
- Compact Design
- Single Control Valve
- Maximum Temperature: 200° F/93° C
- Maximum Working Pressure - 150 psi



M-156N

- Wall Mounted Hose Station
- Bronze Construction
- Compact Design
- Single Control Valve
- Maximum Temperature - 200° F/93° C
- Maximum Working Pressure - 150 psi



M-358/M-758

- Wall Mounted Hose Station
- M-758-Stainless Steel Construction (pictured)
- M-758 Bronze Construction available
- Designed to Conceal Piping
- Maximum Temperature: 200° F/93° C
- Maximum Working Pressure: 150 psi



M-120

- Wall Mounted Hose Station
- Stainless Steel Construction
- Compact Design
- Single Ball Valve Operation
- Maximum Temperature: 200° F/93° C
- Maximum Working Pressure - 150 psi



CEC-1000 Series

- Stainless Steel Cabinet
- Keep mixing units away from dust
- Flush Hinges
- Fits Any standard Mixing unit
- Mixing Unit Not Included



Recessed Series

- Recessed Mixing Unit
- Stainless Steel
- Compact Design
- Idea For New Construction
- Available for The Following Units:
 - M-5000TG/5700TG/M5000TG_HE/
 - M-159TG/750TG



Pedestal Series

- Pedestal
- Sturdy Stainless Steel Construction
- Maximum Temperature: 200° F/93° C
- Maximum Working Pressure: 150 psi
- Available for The Following Units:
 - M-5000TG/5700TG/M5000TG_HE/
 - M-159TG/750TG/

Nozzles

Combine innovative engineering, premium parts, and hand-assembly by skilled technicians and you get nozzles that withstand even the most rugged applications.



M-70 Series

- Bronze
- Heavy Duty Construction
- 2.9lbs
- Replaceable Rubber Cover
- Precise Stream Control
- Available in **Black, White and Red**
- Low Flow Version Available - **M77 LF**
- Maximum Working Pressure - 150 psi



S-70 Series

- Stainless Steel
- Heavy Duty Construction
- 2.9lbs
- Replaceable Rubber Cover
- Precise Stream Control
- Available in **Black, White and Red**
- Low Flow Version Available - **S77 LF**
- Maximum Working Pressure - 150 psi



Mini M-70

- Bronze
- Lightweight/Durable design-1.8lbs
- Available in **Black and White**
- Replaceable Rubber Cover
- Precise Stream Control
- Maximum Working Pressure - 150 psi
- Includes 1/2", 3/8", 3/4" I.D. Hose Barb or 3/4" GHT Swivel Hose Adapter



Mini S-70

- **Stainless Steel**
- Lightweight/Durable design-1.8lbs
- Available in **Black and White**
- Replaceable Rubber Cover
- Precise Stream Control
- Maximum Working Pressure - 150 psi
- Includes 1/2", 3/8", 3/4" I.D. Hose Barb or 3/4" GHT Swivel Hose Adapter



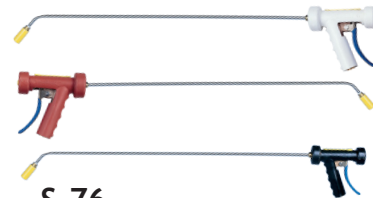
HP-150

- Stainless Steel housing
- Available in **Black, White and Red**
- Heavy Duty Construction
- Under 2lbs
- Locking Trigger Mechanism
- Waterproof, Crack-Resistant Nylon Cover
- Maximum Working Pressure - 150 psi
- Low Flow Version Available - **HP 150 LF**
- Maximum Temperature - 200° F/93° C



HP-150 QC

- The Hydro Pro 150 Quick Connect Spray Nozzle
- Easy 1/4 turn of Quick Connect Attachments
- Available in **Black, White and Red**
- Maximum Working Pressure - 150 psi
- Inquire about extension wands, Interchangeable heads, and soap dispensers.



S-76 Extension Nozzle

- Designed for the Meat Packing Industry
- Ideal for hard-to-reach locations
- Features a 3 ft. extension shaft
- Interchangeable heads adjustable or chisel types
- Other Shaft lengths Available
- Maximum Working Pressure - 150 psi
- Maximum Temperature - 200° F/93° C

Nozzle Adapters

Strahman hose accessories and adapters keep your hoses and nozzles operating properly and improve work flow



Swivel Pro

- Stainless Steel Construction
- Allows universal nozzle movement
- Improves work efficiency
- 1/2", 3/8", 3/4" I.D. hose barb
- Available in Black and White
- Mini 3/8" NPT



3/4" Female Garden Hose Adapter

- Available in bronze and stainless steel
- 3/4" Female GHT x 1/2" Male NPT



I.D. Swivel Adapters

- Available in bronze and stainless steel
- 1/2" ID hose barb and 1/2" Male NPT on the other end
- 3/4" ID hose barb and 1/2" Male NPT on the other end
- 3/8" ID hose barb and 1/2" Male NPT on the other end



Swivel Pro pictured with the HP 150 Nozzle in motion

Miscellaneous (for 5/8" ID hose)

Available in Bronze and Stainless Steel



Hose Shank (8A)

Adapter Nut (8B)

Adapter 3/4" NPT Male (8C)

Mini Swivel Adapter

- Available in **bronze and stainless steel**
- Adapt mini m-70 nozzle to any hose
- ID hose barb available: 1/2", 3/4", or 3/8" and 3/8" male NPT on the other end.
- 3/4" female garden hose thread and 3/8" male NPT on the other end,



Nozzles Attachments

Strahman continues to innovate every day. Our Nozzle attachments expand the functionality of our powerful nozzles and bring the most capable wash down tools to industry.



Hydro Swivel Sweeper

- Clean all floor surfaces with high velocity water
- Multi-functioning cleaning tool
- Stainless steel and acetate polymer construction
- 6 interchangeable tips
- Varying flow rates
- Attaches to a bronze Mini M-70 spray nozzle-**included**



Drain Cleaner

- Clear drains from debris from any 3" or 4" floor drain
- 304 Stainless Steel, nylon handle and firm bristle brush
- Supply connection is female 3/4" garden hose.
- Works well with most detergents and sanitizers
- Attaches to a bronze Mini M-70 spray nozzle
- Available in 12", 24" and 36" lengths



HydroFlex Drain Cleaner

- Effective cleaning tool for 3" or 4" **goose neck** floor drains
- Clear fruit flies, drain flies or other debris from any drain
- Extruded Hose with Internal Spring
- Supply connection is female 3/4" garden hose
- Works well with most detergents and sanitizers
- Attaches to a bronze Mini M-70 spray nozzle-
- Maximum Working Pressure - 150 psi

Hose Assemblies

All hoses are FDA approved and feature a patented locking assembly stainless steel or bronze fitting which resists blowout.



Extruded Hose Assembly

- With FDA-approved inner tube
- Available in Black, White and Yellow

Premium Wrapped Black Hose

- With FDA approved inner tube

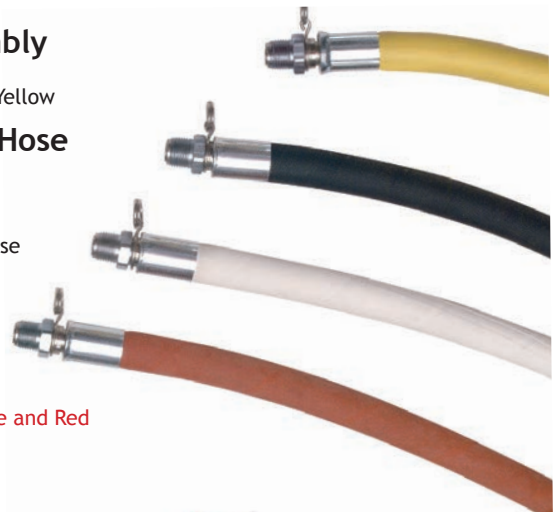
Premium Wrapped White Hose

- With FDA-approved inner tube-food grade hose

Premium Wrapped Red Hose

- With FDA-approved inner tube-food grade hose

All Premium Wrapped Hose Assemblies Available in Black, White and Red



Ergonomic Hose Assembly

- Flexible Lightweight 3/8" extruded hose
- High Pressure Hot Water Hose
- Compatible with mixing unit stations
- Includes Swivel Pro Adapter
- Hose lengths: 25', 50', 75', 100'
- High Pressure Neoprene



HR-100 Wall Mounted Hose Rack

- Minimalist Design
- Keeps hoses coiled
- Stainless steel construction
- Easily installed into masonry wall
- Holds up to 100' hose



Standard Strahman Hose Reel

- Stainless or Carbon Steel
- Heavy Duty Internal Spring Motor
- Efficiently wind and rewind heavy hoses
- A sturdy ratchet assembly locks the reel
- Unlock the reel with a gentle tug
- Standard holds up to 50' of hose



Hi- Sanitary Stainless Steel Hose Reel

- Polished Stainless Steel
- Perfect for harsh environments
- Only 12-15 lbs for force to unravel force
- Easily installs on floor or wall

Pre-Rinse



Strahman Pre-Rinse Equipment is used throughout the restaurant industry for its ergonomic, award-winning low-flow nozzles, hose stations and superior build quality.



Kwik Clean 3

- Ultra Low Flow Spray Nozzle
- Tri-Tip Spray Nozzle
- 2 year Warranty
- Best User satisfaction
- Long lasting durability
- Proven to save over \$500 in water bills



Vari-Spray

- Most Versatile Pre-Rinse Nozzle on the Market
- Received a 2013 Kitchen Innovation Award
- Ultra Low Flow with Optimum Performance



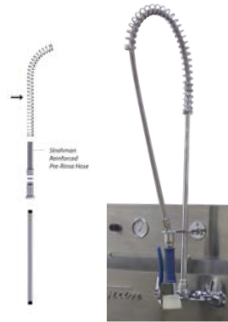
Pivot Pro Connector

- 360° swivel rotation
- Decrease stress on hose and nozzle connections
- Aluminum powder-coated enclosure
- Allow up to 30% faster dish cleaning time



Pre-Rinse Hose Reel

- Heavy duty pre-rinse hose reel
- Stainless Steel or Powder Coated
- Spring Loaded
- 35' x 3/8" I.D. FDA approved Neoprene rubber hose



Hi-Rise Sink Assembly

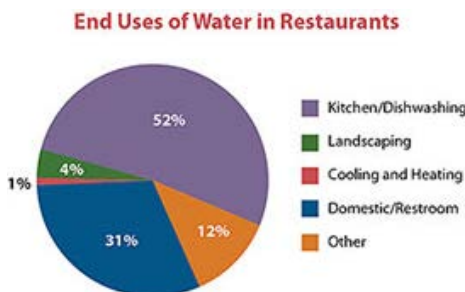
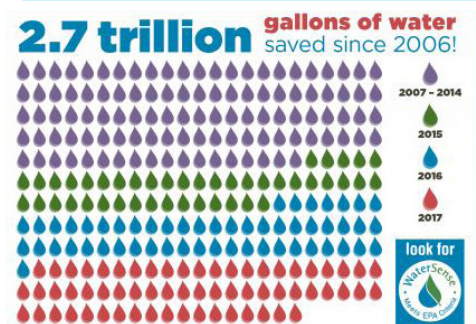
- Polished Stainless Steel
- Adds Efficiency in the Kitchen
- Available in 18', 24' and 32" lengths



Super Reinforced Armor-Clad Pre-Rinse Hose

- Stainless Steel outer armor
- Inner Spring
- Lasts 3x longer than competition
- Held together at 200lb of tension
- Available in 36" and 44" lengths

Since 2006, WaterSense has endorsed manufacturers, like Strahman, who manufacture products that save water!



Source: EPA WaterSense

According to the EPA WaterSense, restaurants use an average of 5800 gallons of water per day! That figure costs restaurants nearly \$8000 per year. Switching to low-flow nozzles can literally save restaurants money. Strahman created two new restaurant-specific nozzles from the ground up. The result is the KC-3 and the Vari-Spray. Our nozzles consume less water and have more power than any other low-flow nozzle on the market.

Ozone



Ozone is a safe, natural, organic method of cleaning and sanitizing your equipment without the need for harsh chemical sanitizers. FDA and USDA Approved, ozone is an effective oxidizer which breaks down bacteria and viruses.

Strahman adds three ozone sanitizing units to its Washdown product line. Choose between two wall mounted CIP units, delivering dissolved ozonated water in isolated areas throughout your facility where you most need it. Our third choice is a portable C1 Cart, which offers mobility and has dual ports for both dissolved ozone and gas.



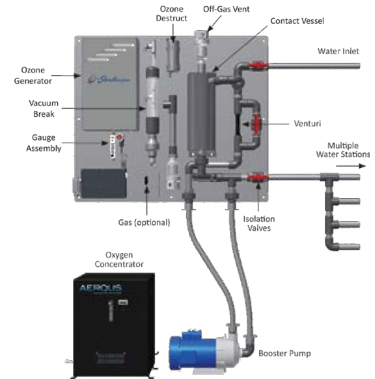
CIP 20

- Compact, Plug and Play chemical free sanitation
- Perfect for surface sanitation where space is limited
- Ozone Output: 200 mg/hr ozonated water
- Aluminum powder-coated enclosure
- Cost effective sanitizing for localized clean up



C1 Mobile Cart

- Cart based ozone generating unit for ultimate mobility
- Push button operations
- Dual Mode: Dissolved ozone water and Gas Output
- Ozone Output: 18G/hr @ 12 SCFH oxygen
- Ideal for breweries and large facilities



CIP 810

- Wall-mounted ozone sanitation
- Electrical controls/Auto circulation loop timer
- Sanitize conveyor belts, cutting boards, and work surfaces
- Ozone Output: 8G/hr ozonated water
- Saves money, reduces chemical and hot water use



What Industries Sanitize with Ozone?

- Breweries, wineries, cideries
- Meat, poultry and seafood processing plants
- Fruit and vegetable packaging facilities
- Pharmaceutical production
- Airborne decontamination
- Veterinarian clinics

The Strahman Family of Products Includes:

Wash Down Equipment

Strahman offers a full line of mixing units, hose stations, hoses, nozzles, and wash down accessories. Our wash down line is designed for industrial use and is used in a wide variety of industries including food, beverage, pharmaceutical, chemical and other applications.

Pre-Rinse Equipment for Commercial Kitchens

Strahman offers pre-rinse spray nozzles, handles, hoses, hose reels and Pivot Pro swivel connectors. Designed for use in restaurants, hotels, supermarkets, and all commercial kitchens, food serving and food preparation applications.

Sampling Valves

Strahman has a full line of sampling valves that produce live samples without exception. Our sampling valves' unique design prevents failure caused by sediment or clogging.

Drain Valves

Strahman Drain Valves are designed to prevent clogging. They are ideal for use in liquid and gas service or with slurries, polymers, and high viscosity fluids that tend to solidify at room temperature.

Automated Valves and Fire Safe Products

Strahman automated valve packages with floating ball valves and resilient seated butterfly valves come complete with electric or pneumatic actuators for a wide array of industrial applications. Additionally, a full suite of API 607 fire safe valve products are offered as actuated units or to be used in conjunction with our FM approved thermal shut-off assemblies. Resettable Emergency Block Valves (R-EBV) are also available for the oil & gas and chemical industries.



Process & Steam Specialties

7136 - 56 Ave NW Edmonton AB T6B 1E4

1(800) 811-2175

psswest@processandsteam.com

www.processandsteam.com

www.strahmanvalves.com



ISO 9001
OMI-SAI Global