



Thread Protection

Pipe | Valve | Flange



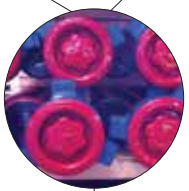
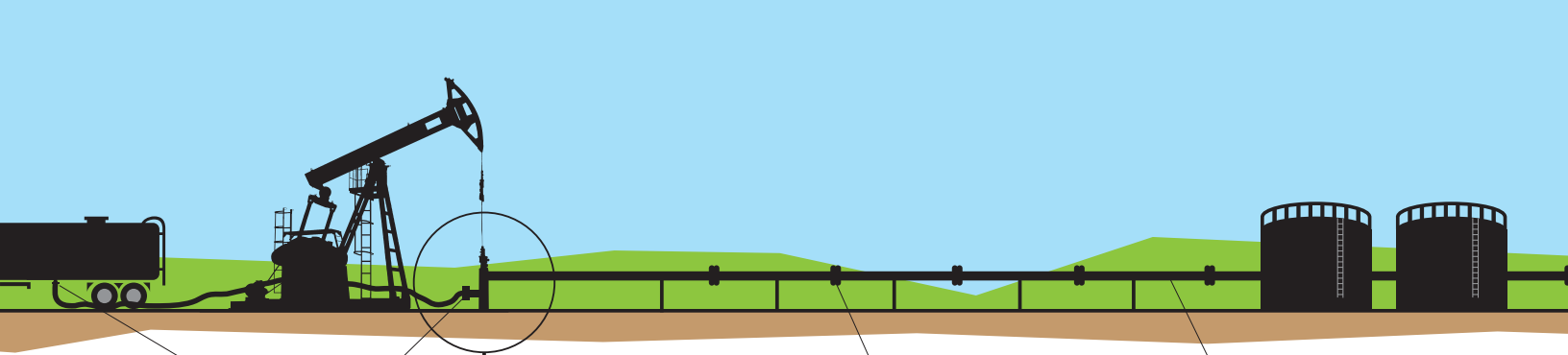
Protecting your bottom line.

Damaged products can cost big down the line and cause major problems. Don't take chances – use simple, economical product protection up front to save time and money.

For 65 years, Caplugs has brought innovative plastic and rubber molded solutions to solve your toughest challenges. Through extensive R&D and invaluable time spent directly in the field working with you, our engineers have developed the products you need to get the job done easily and safely.

Our line of plastic product protection covers a wide variety of pipes, valves, flanges and other fabricated components during shipping and storage. We are ISO 9001, ISO 14001, ISO/TS 16949 and ISO 13485 certified so you know we're right for the job. With five molding processes available and custom capabilities, we protect what matters most.

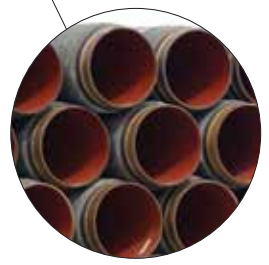
More than **12,000** standard parts are **in stock** and **ready to ship** right when you need them.



Hammer Union Protection

HU Series
Keeps wing nut threads covered.

FHU Series
Threaded cap to protect the female subcomponent.



Plastic Caps for Pipe Ends

CE Series
Closed-end caps cover pipes prior to connection.



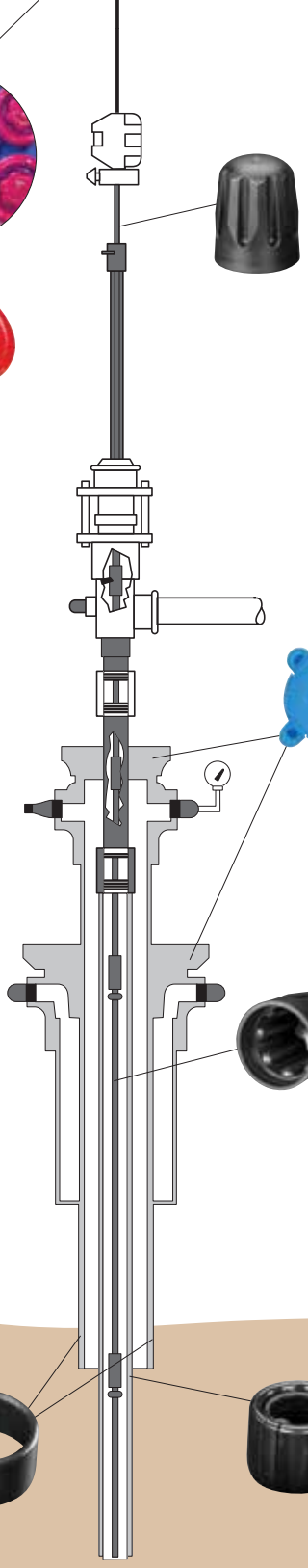
Toggle Lock Flange Covers

TLF Series
Shields API well head flanges for distribution.



Toggle Lock Flange Covers

TLF Series
Shields flange faces prior to installation.



Polished Sucker Rod Protection

PSR Series
Threaded caps protect pin end threads during shipping and storage.



Sucker Rod Protection

SSR Series
Protects pin end threads during shipping and storage.



Standard Duty Tubing Protection

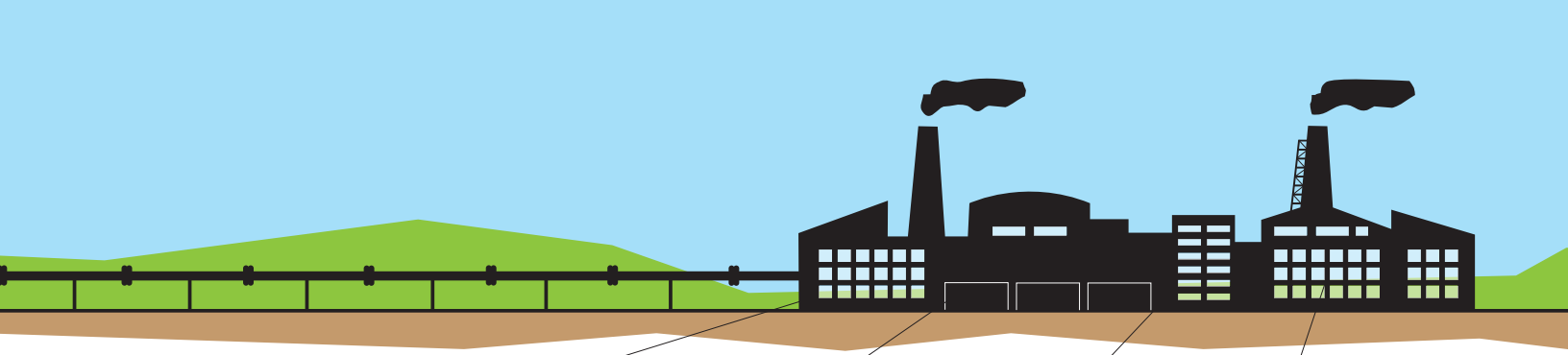
UEO Series and NUO Series
Secures tubing pin end threads during shipping for rig ready orders.



Standard Duty Well Casing Covers

CLT Series and CST Series
Guards casing pin ends during transport for rig ready shipments.





PIPES

Protects pipe ends from damage and dirt, debris and other contaminants during shipping and storage.



VALVES



PUMPS



FITTINGS

Covers raised- and full-faced flanges as well as machined surfaces of welding necks to keep free from damage, debris and other contaminants during shipping and storage.



Open-End Thread Protectors
OE Series



Weld Neck Protection
WNC Series



Raised-Face Flange Protectors
RFP Series



Plastic Caps for Pipe Ends
CE Series



Vinyl Snap Ring Flange Covers
VSR Series



Flange Protectors
with Matching Bolt Holes
FAN Series



Vented Pipe Caps
VP Series



Toggle Lock Flange Covers
TLF Series



Push-In Flange Protectors
EPN-305



Bevel-Edge Protectors
for Pipe Ends
EPN-250

Protection where it matters.



Pipe and Thread Protection

Caplugs full line of pipe caps:

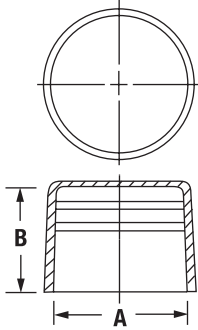
- Available in many styles and sizes
- Protect against damage, dust and moisture
- Quality coverage at an affordable price
- Easy, economical option
- Always in stock and ready to ship
- Used on valves, pipes and pumps during delivery and storage



Providing **maximum coverage** for **minimal cost** so you don't have to worry about critical damages.

Plastic Pipe Cap CE Series

Durable caps protect against damage and debris. CE-309 through CE-326 feature an NPT taper; all others have straight walls.



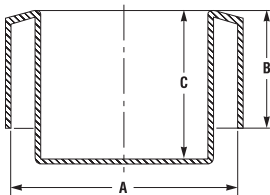
Features internal rib design for self venting and added impact protection.

Material: Low-Density Polyethylene Color: Various

Caplugs No.	Color	To Fit Thread Size	Dimensions				Packaging			
			A		B		Carton Weight		Carton Quantity	Mini Pak Quantity
			In	mm	In	mm	lbs	kgs		
CE-309	Black	1/4 NPT	.53	13.69	.59	14.99	14	6.4	7000	1400
CE-310	Black	3/8 NPT	.67	17.09	.59	14.99	11	5.0	4000	800
CE-311	Black	1/2 NPT	.84	21.34	.78	19.81	21	9.5	5000	1000
CE-312	Black	3/4 NPT	1.05	26.67	.78	19.81	22	10.0	4000	800
CE-313	Black	1 NPT	1.31	33.40	.97	24.64	37	16.8	4500	900
CE-314	Black	1-1/4 NPT	1.66	42.16	1.00	25.40	35	15.9	2500	500
CE-315	Black	1-1/2 NPT	1.90	48.26	1.00	25.40	33	15.0	2000	400
CE-316	Black	2 NPT	2.37	60.33	1.03	26.16	35	15.9	1200	240
CE-317	Black	2-1/2 NPT	2.87	73.03	1.56	39.62	25	11.3	500	100
CE-318	Black	3 NPT	3.50	88.90	1.63	41.40	27	12.2	400	80
CE-319	Black	3-1/2 NPT	4.00	101.60	1.66	42.16	25	11.3	300	60
CE-320	Black	4 NPT	4.50	114.30	1.72	43.69	22	10.0	225	45
CE-321	Black	5 NPT	5.56	141.30	1.81	45.97	21	9.5	120	24
CE-322	Black	6 NPT	6.62	168.28	1.94	49.28	22	10.0	80	16
CE-324	Black	8 NPT	8.62	219.08	2.13	54.10	32	14.5	80	16
CE-325	Black	10 NPT	10.75	273.05	2.34	59.44	25	11.3	40	8
CE-326	Black	12 NPT	12.75	323.85	2.53	64.26	21	9.5	25	5
CE-14	Black	14 NPT	14.00	355.60	3.00	76.20	20	9.1	20	4
CE-16	Black	16 NPT	16.00	406.40	3.00	76.20	20	9.1	16	6
CE-18	Black	18 NPT	18.00	457.02	3.00	76.20	24	10.9	16	4
CE-20	Black	20 NPT	20.00	507.80	3.00	76.20	27	12.2	14	4
CE-331	Yellow	22 NPT	22.00	558.80	2.36	59.94	39	17.7	22	2
CE-24	Black	24 NPT	24.00	609.36	3.00	76.20	31	14.1	12	2
CE-333	Black	26 NPT	26.00	660.40	4.53	115.06	36	16.3	10	2
CE-334	Black	28 NPT	28.00	711.20	4.53	115.06	41	18.6	10	2
CE-30	Black	30 NPT	30.00	761.70	4.50	114.26	45	20.5	10	2
CE-336	Black	32 NPT	32.00	812.80	4.53	115.06	56	25.4	10	2
CE-36	Black	36 NPT	36.00	914.40	4.53	115.06	64	29.1	10	2
CE-338	Black	40 NPT	40.00	1016.00	4.53	115.06	55	24.9	8	2
CE-340	Black	42 NPT	42.00	1066.80	4.53	115.06	57	25.9	6	2
CE-342	Black	44 NPT	44.00	1117.60	4.92	124.97	58	26.3	5	2
CE-344	Black	48 NPT	48.00	1219.20	4.53	115.06	58	26.3	6	1
CE-346	Black	52 NPT	52.00	1320.80	5.91	150.11	76	34.5	6	1
CE-348	Black	56 NPT	56.00	1422.40	5.91	150.11	90	40.8	6	1
CE-350	Black	60 NPT	60.00	1524.00	5.91	150.11	78	35.4	6	1
CE-352	Black	64 NPT	64.00	1625.60	5.91	150.11	85	38.6	4	1

Closed-End Recessed Caps EPN-240 Series

Closed-end pipe caps that are recessed to accommodate crane hooks for ease of mobility, loading and unloading.

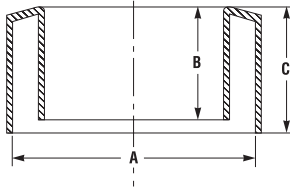


Material: Linear Low-Density Polyethylene Color: Black

Caplugs No.	Nominal Pipe Size	Maximum Wall Thickness		Dimensions						Packaging	
		In	mm	A		B		C		Carton Quantity	Mini Pak Quantity
		In	mm	In	mm	In	mm	In	mm		
EPN-240-4	4	.551	14	4.500	114.30	3.54	89.92	2.36	59.94	70	n/a
EPN-240-6	6	.630	16	6.625	168.28	3.54	89.92	2.56	65.02	30	n/a
EPN-240-8	8	.551	14	8.625	168.28	3.54	89.92	2.36	59.94	25	n/a
EPN-240-10	10	.591	15	10.750	273.05	3.54	89.92	3.62	91.95	20	n/a
EPN-240-10-A	10	.906	23	10.750	273.05	3.54	89.92	3.62	91.95	13	n/a
EPN-240-12	12	.591	15	12.750	323.85	3.54	89.92	3.62	91.95	9	n/a
EPN-240-12-A	12	1.024	26	12.750	323.85	3.54	89.92	3.54	89.92	9	n/a
EPN-240-14	14	.591	15	14.000	355.60	3.54	89.92	3.62	91.95	12	n/a
EPN-240-16	16	.630	16	16.000	406.40	3.54	89.92	3.62	91.95	12	n/a
EPN-240-18	18	.630	16	18.000	457.20	3.62	91.95	3.74	95.00	10	n/a
EPN-240-20	20	.630	16	20.000	508.00	3.62	91.95	3.74	95.00	10	n/a
EPN-240-24	24	.866	22	24.000	609.60	4.49	114.05	4.61	117.09	6	n/a
EPN-240-28	28	.866	22	28.000	711.20	4.72	119.89	5.12	130.05	6	n/a
EPN-240-30	30	.866	22	30.000	762.00	4.72	119.89	5.12	130.05	10	n/a
EPN-240-32	32	.906	23	32.000	812.80	4.72	119.89	5.12	130.05	10	n/a
EPN-240-36	36	.906	23	36.000	914.40	4.72	119.89	5.12	130.05	10	n/a
EPN-240-40	40	1.063	27	40.000	1016.00	4.72	119.89	5.12	130.05	6	n/a

Open-End Beveled-Edge Protectors EPN-250 Series

Guards beveled-edge pipes for hookable lifting. Durable and easy to install, remains securely on pipe until removal.

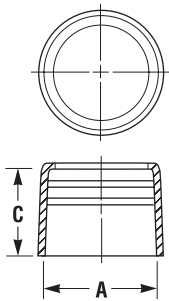


Material: Linear Low-Density Polyethylene Color: Black

Caplugs No.	Nominal Pipe Size		Maximum Wall Thickness	Dimensions						Packaging	
	In	mm		A		B		C		Carton Quantity	Mini Pak Quantity
				In	mm	In	mm	In	mm		
EPN-250-8	8	.551	14	8.625	219.08	2.36	59.94	3.54	89.92	35	n/a
EPN-250-10	10	.591	15	10.750	273.05	3.62	91.95	3.54	89.92	20	n/a
EPN-250-12	12	.591	15	12.750	323.85	3.54	89.92	3.54	89.92	9	n/a
EPN-250-12-A	12	1.024	26	12.750	323.85	3.62	91.95	3.54	89.92	9	n/a
EPN-250-14	14	.591	15	14.000	355.60	3.62	91.95	3.54	89.92	12	n/a
EPN-250-16	16	.630	16	16.000	406.40	3.74	95.00	3.54	89.92	12	n/a
EPN-250-18	18	.630	16	18.000	457.20	3.74	95.00	3.62	91.95	10	n/a
EPN-250-20	20	.630	16	20.000	508.00	3.74	95.00	3.62	91.95	10	n/a
EPN-250-24	24	.866	22	24.000	609.60	4.61	117.09	4.49	114.05	6	n/a

Open-End Thread Protectors OE Series Traditional Design

Shields threaded pipes and conduits during shipping, storage and transit. Includes locking bead to fit snugly.



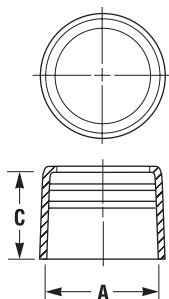
Material: Low-Density Polyethylene Color: Various

Caplugs No.	Nominal Pipe Size	RMC Color	IMC Color	Dimensions				Packaging			
				A		C		Carton Weight (approx.)		Carton Quantity	Mini Pak Quantity
				In	mm	In	mm	lbs	kgs		
OE 311	1/2	Black	Yellow	.840	21.34	.78	19.81	22	10.0	5000	1000
OE 312	3/4	Red	Green	1.050	26.67	.78	19.81	20	9.1	3500	700
OE 313	1	Blue	Orange	1.315	33.40	.97	24.64	30	13.6	4000	800
OE 314	1-1/4	Red	Green	1.660	42.16	1.00	25.40	29	13.2	2500	500
OE 315	1-1/2	Black	Yellow	1.900	48.26	1.00	25.40	28	12.7	2000	400
OE-316	2	Blue	Orange	2.375	60.33	1.03	26.16	27	12.2	1200	240
OE-317	2-1/2	Black	Yellow	2.875	73.03	1.56	39.62	23	10.4	600	120
OE-318	3	Blue	Orange	3.500	88.90	1.63	41.40	20	9.1	400	80
OE-319	3-1/2	Black	Yellow	4.000	101.60	1.66	42.16	18	8.2	300	60
OE-320	4	Blue	Orange	4.500	114.30	1.72	43.69	16	7.3	225	45
OE-321	5	Blue	-	5.563	141.30	1.81	45.97	15	6.8	120	24
OE-322	6	Blue	-	6.625	168.28	1.94	49.28	15	6.8	80	16

GRIP IT & RIP IT™ Design

Open-End Thread Protectors OE Series New Tear-Ring Design

New patented design includes vertical ribs to slide over threads. Features Grip It and Rip It™ design for quick and easy removal. Also includes internal bead that keeps moisture from threads.



Material: Low-Density Polyethylene Color: Various

Caplugs No.	Nominal Pipe Size	RMC Color	IMC Color	Dimensions				Packaging			
				A		C		Carton Weight (approx.)		Carton Quantity	Mini Pak Quantity
				In	mm	In	mm	lbs	kgs		
OE-0500	1/2	Black	Yellow	0.823	20.90	0.83	21.08	22	48.4	5000	1000
OE-0750	3/4	Red	Green	1.030	26.16	0.84	21.34	25	11.3	3500	700
OE-1000	1	Blue	Orange	1.295	32.89	1.00	25.40	39	17.8	4000	800
OE-1250	1-1/4	Red	Green	1.640	41.66	1.03	26.16	34	15.2	2500	500
OE-1500	1-1/2	Black	Yellow	1.880	47.75	1.05	26.67	31	14.2	2000	400
OE-2000	2	Blue	Orange	2.355	59.82	1.18	29.97	26	11.9	1200	240
OE-2500	2-1/2	Black	Yellow	2.860	72.64	1.76	44.70	29	63.8	600	120
OE-3000	3	Blue	Orange	3.478	88.34	1.82	46.23	24	52.8	400	80
OE-3500	3-1/2	Black	Yellow	3.973	100.91	1.87	47.50	9	19.8	100	20
OE-4000	4	Blue	Orange	4.468	113.49	1.92	48.77	20	44	225	45
OE-5000	5	Blue	-	5.542	140.77	2.03	51.56	17	37.4	120	24
OE-6000	6	Blue	-	6.580	167.13	2.11	53.59	8	17.6	40	8
OE-8000	8	Black	-	8.582	217.98	2.33	59.18	12	26.4	40	8
OE-10000	10	Black	-	10.673	271.09	2.55	64.77	13	28.6	30	6

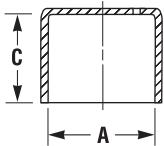
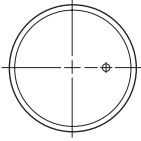
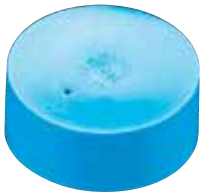
Vented Pipe Caps VP Series

Equipped with a ventilation hole to prevent pressure build-up that can cause accidental pop off. Defends against damage and contamination with effortless attachment.



Material: Low-Density Polyethylene **Color:** Blue

Caplugs No.	American Standard (In)	Dimensions				Packaging	
		A		C		Carton Quantity	Mini Pak Quantity
		In	mm	In	mm		
VP-200	2	2.375	60.30	1.00	25.40	500	100
VP-300	3	3.500	88.90	1.50	38.10	200	40
VP-400	4	4.500	114.30	1.50	38.10	300	60
VP-600	6	6.625	168.28	1.75	45.45	120	24
VP-800	8	8.625	219.08	2.00	50.80	70	14



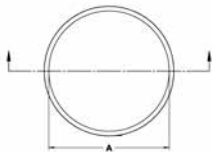
Fabricated Pipe Caps FPC Series

Manufactured in one week to fit any size up to 60" (including fractional inches). High-density polyethylene top with flexible, low-density polyethylene skirt for simple attachment. Economical alternative to cumbersome two-piece cap.



Material: High-Density Polyethylene (Disk), Low-Density Polyethylene (Disk) **Color:** Black

Caplugs No.	Pipe Size	Dimension A	Dimension B	Carton Quantity
	In	In	In	
FPC-32	32	32	2.8	5
FPC-34	34	34	2.8	5
FPC-36	36	36	2.8	4
FPC-38	38	38	2.8	4
FPC-40	40	40	2.8	4
FPC-42	42	42	2.8	4
FPC-44	44	44	2.8	4
FPC-48	48	48	2.8	4
FPC-52	52	52	2.8	2
FPC-56	56	56	2.8	2
FPC-60	60	60	2.8	2



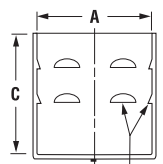
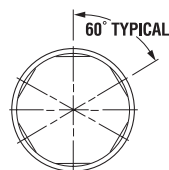
American Standard Caps (12-thread) PCAS Series

The PCAS Series American Standard caps are designed to fit ASTM-A120 standard schedule 40 pipe. The caps protect the longer thread form associated with piping used in water wells and irrigation. An interrupted bead assures the cap is locked in place.



Material: Low-Density Polyethylene **Color:** Orange

Caplugs No.	To Cap NPT Size	Dimensions				Packaging	
		A		C		Carton Quantity	Mini Pak Quantity
		In	mm	In	mm		
PCAS-1080	1-1/2	1.865	47.37	1.75	44.45	250	50
PCAS-1081	2	2.352	59.74	2.50	63.50	500	100
PCAS-1082	2-1/2	2.852	72.44	2.88	73.15	300	60
PCAS-1557	3	3.422	86.92	2.98	75.69	200	40



THREAD INTERFERENCE

Introducing **GRIP IT & RIP IT™**

We've spent time in the field with your engineers to develop solutions that withstand harsh environments yet still provide quick, easy installation and removal.

That's why we developed Grip it & Rip it™ technology that saves time and eliminates damage to make your job easier. When you purchase this thread protection you won't need an axe or other tool to remove it. With an innovative pull tab design, there's no possibility of damaging threads and you'll save valuable energy in the field.



Grip it & Rip it™ takes

63% less
time to **INSTALL**

&

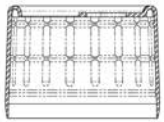
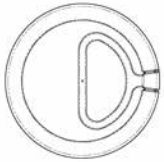
87% less
time to **REMOVE**

Overall, that's a

75% time
savings*

with no risk of thread damage

* Based on timing of installation and removal of current comparable industry offerings.



Standard Duty Long Thread Well Casing CLT Series

Well casing protectors designed with recyclable polyethylene that cover long threads on exposed well casing pin ends for rig ready shipments. Includes tear-ring for easy removal and installation.

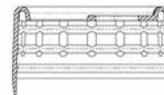
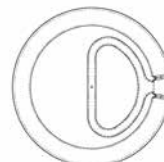


Material: Low-Density Polyethylene **Color:** Black

Caplugs No.	To Fit Casing (In)	Thread Type	Description	API Class	Carton Quantity	Mini Pak Quantity
CLT-4500-3000	4-1/2	LTC Long Thread	Pin End Open	Standard Duty	40	n/a
CLT-5000-3375	5	LTC Long Thread	Pin End Open	Standard Duty	40	n/a
CLT-5500-3500	5-1/2	LTC Long Thread	Pin End Open	Standard Duty	65	n/a
CLT-6625-3875	6-5/8	LTC Long Thread	Pin End Open	Standard Duty	35	n/a
CLT-7000-4000	7	LTC Long Thread	Pin End Open	Standard Duty	35	n/a
CLT-7625-4125	7-5/8	LTC Long Thread	Pin End Open	Standard Duty	25	n/a
CLT-9625-4750	9-5/8	LTC Long Thread	Pin End Open	Standard Duty	20	n/a

When our **protection costs less than 1%*** of one section of casing or tubing, **why risk the damage?**

*Based on current market pricing



Standard Duty Short Thread Well Casing CST Series

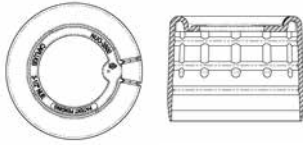
Well casing protectors designed with recyclable polyethylene that cover short threads on exposed well casing pin ends for rig ready shipments. Includes tear-ring for easy removal and installation.



Material: Low-Density Polyethylene **Color:** Black

Caplugs No.	To Fit Casing (In)	Thread Type	Description	API Class	Carton Quantity	Mini Pak Quantity
CST-4500-2000	4-1/2	STC Short Thread	Pin Open End	Standard Duty	50	n/a
CST-4500-2625	4-1/2	STC Short Thread	Pin Open End	Standard Duty	50	n/a
CST-5000-2500	5	STC Short Thread	Pin Open End	Standard Duty	40	n/a
CST-5000-2750	5	STC Short Thread	Pin Open End	Standard Duty	35	n/a
CST-5500-2875	5-1/2	STC Short Thread	Pin Open End	Standard Duty	30	n/a
CST-6625-3125	6-5/8	STC Short Thread	Pin Open End	Standard Duty	42	n/a
CST-7000-2375	7	STC Short Thread	Pin Open End	Standard Duty	60	n/a
CST-7000-3125	7	STC Short Thread	Pin Open End	Standard Duty	42	n/a
CST-7625-3250	7-5/8	STC Short Thread	Pin Open End	Standard Duty	35	n/a
CST-8625-3000	8-5/8	STC Short Thread	Pin Open End	Standard Duty	32	n/a
CST-9625-3375	9-5/8	STC Short Thread	Pin Open End	Standard Duty	24	n/a
CST-10750-3500	10-3/4	STC Short Thread	Pin Open End	Standard Duty	16	n/a

GRIP IT & RIP IT™ Design



Standard Duty Non-Upset End Tubing Protection NUO Series

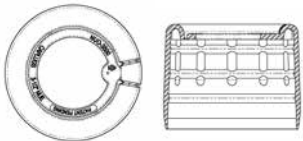
Protects exposed tubing pin ends. Easily installed and removed with non-threaded, push-on design and a tear-ring. Made with recyclable polyethylene.

Material: Low-Density Polyethylene **Color:** Black

Caplugs No.	To Fit NUE Tubing (In)	Description	API Class	Carton Quantity	Mini Pak Quantity
NUO-2375	2-3/8	Pin End Open	Standard Duty	100	n/a
NUO-2875	2-7/8	Pin End Open	Standard Duty	100	n/a
NUO-3500	3-1/2	Pin End Open	Standard Duty	100	n/a



GRIP IT & RIP IT™ Design

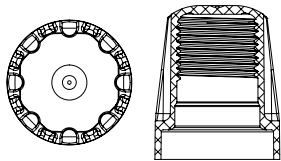


Standard Duty External Upset End Tubing Protection UEO Series

Protects exposed tubing pin ends. Easily installed and removed with non-threaded, push-on design and a tear-ring. Made with recyclable polyethylene.

Material: Low-Density Polyethylene **Color:** Black

Caplugs No.	To Fit EUE Tubing (In)	Description	API Class	Carton Quantity	Mini Pak Quantity
UEO-2375	2-3/8	Pin End Open	Standard Duty	100	n/a
UEO-2875	2-7/8	Pin End Open	Standard Duty	100	n/a
UEO-3500	3-1/2	Pin End Open	Standard Duty	100	n/a
UEO-4500	4-1/2	Pin End Open	Standard Duty	80	n/a

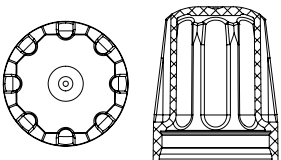


Polished Sucker-Rod Protectors PSR Series

Made for high grade, polished stainless steel, sucker rods provide excellent impact protection. Screw on threaded ends for maximum retention and easily removed with socket tools or wrenches.

Material: High-Density Polyethylene **Color:** Color code by size

Caplugs No.	To Cap Rod Size (In)	Color	Carton Quantity	Mini Pak Quantity
PSR-0625	5/8	Red	600	120
PSR-0750	3/4	Yellow	400	80
PSR-0875	7/8	Orange	500	100
PSR-1000	1	Blue	300	60



Sucker-Rod Protectors SSR Series

Features non-threaded design for steel sucker rods. Protects threaded ends with excellent impact protection. Easily removed with socket tools or wrenches.

Material: Low-Density Polyethylene **Color:** Black

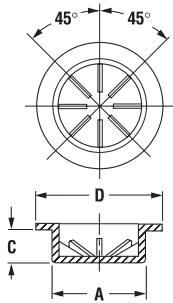
Caplugs No.	To Cap Rod Size (In)	Carton Quantity	Mini Pak Quantity
SSR-0625	5/8	600	120
SSR-0750	3/4	400	80
SSR-0875	7/8	500	100
SSR-1000	1	300	60
SSR-1125	1-1/8	200	40



Note: SR Series is still available. Please visit caplugs.com/pipeandflange to view our full line.

Sucker-Rod Plugs FPN Series

These heavy-duty plugs protect sucker-rod couplings, but have a versatile design that is ideal for a wide range of applications where a greater degree of protection is necessary.

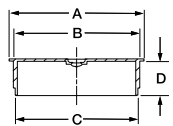
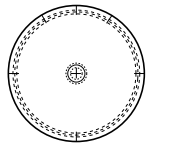


Material: Low-Density Polyethylene Color: Black

Caplugs No.	To Plug Rod Size (In)	Dimensions						Packaging	
		A		C		D		Carton Quantity	Mini Pak Quantity
		In	mm	In	mm	In	mm		
FPN 5	5/8	.975	24.77	.38	9.53	1.38	35.05	3500	700
FPN 6	3/4	1.100	27.94	.38	9.53	1.50	38.10	2500	500
FPN 7	7/8	1.225	31.12	.38	9.53	1.69	42.93	2000	400
FPN 8	1	1.415	35.94	.38	9.53	2.00	50.80	1500	300

Pipe Plugs PVCP Series

Designed with straight wall to fit into plastic PVC pipe. Provides a tight seal to prevent leaks or other damage.

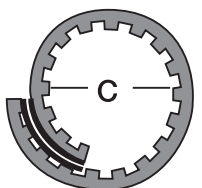


Material: Low-Density Polyethylene Color: Red

Caplugs No.	Dimensions								Packaging	
	A		B		C		D		Carton Quantity	Mini Pak Quantity
	In	mm	In	mm	In	mm	In	mm		
PVCP-1 1/4-SDR 26/32	1.62	41.13	1.53	38.85	1.52	38.59	.55	13.96	2500	1000
PVCP-1 1/2-SDR 26	1.86	47.23	1.75	44.56	1.74	44.18	.55	13.96	2000	750
PVCP-2-SDR 26	2.34	59.41	2.18	55.53	2.17	55.10	.60	15.23	2500	500
PVCP-2 1/2-SDR 32	2.84	72.11	2.71	68.91	2.69	68.30	.65	16.50	1500	300
PVCP-3-SDR 41	3.47	88.10	3.34	84.83	3.31	84.04	.75	19.04	800	200
PVCP-3 1/2-SDR 41	3.96	100.54	3.81	96.84	3.78	95.97	.75	19.04	600	120
PVCP-4-SDR 41	4.46	113.24	4.26	108.36	4.24	107.65	.75	19.04	450	120
PVCP-5-SDR 41	5.51	139.90	5.26	133.68	5.22	132.54	.85	21.58	300	80
PVCP-8-SDR 41	8.59	218.10	8.22	208.78	8.16	207.18	1.00	25.39	100	20

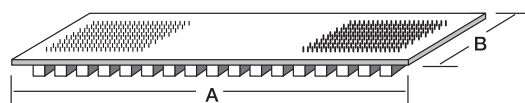
Ding Ring Wrap-Arounds DR Series

Universal adjustable rings protect gear and tube sections. Made of flexible PVC. Rings can wrap around any sized tube for impact protection.



Material: Flexible PVC Color: Red

Caplugs No.	Dimensions						Packaging	
	A		B		C		Carton Quantity	Mini Pak Quantity
	In	mm	In	mm	In	mm		
DR-1	12.75	323.86	1.00	25.40	Fits tube O.D. from 1 to 4	25.40 to 101.60	200	n/a
DR-2	16.25	412.75	1.50	38.10	Fits tube O.D. from 1 to 5	25.40 to 127.00	200	n/a
DR-3	22.00	558.80	3.00	76.20	Fits tube O.D. from 1 to 7	25.40 to 177.80	100	n/a



Hammer Union Protection HU, FHU and VC Series

Covers machined threads and sealing surfaces of hammer union joint connections. Includes unique ergonomic handle for easy use. Designed with high durometer vinyl for durability and impact resistance at a lower cost. The FHU and VC Series are protective caps for the female subcomponent.



HU Series



FHU Series



VC Series

Material: Vinyl **Color:** Color coded by working pressure

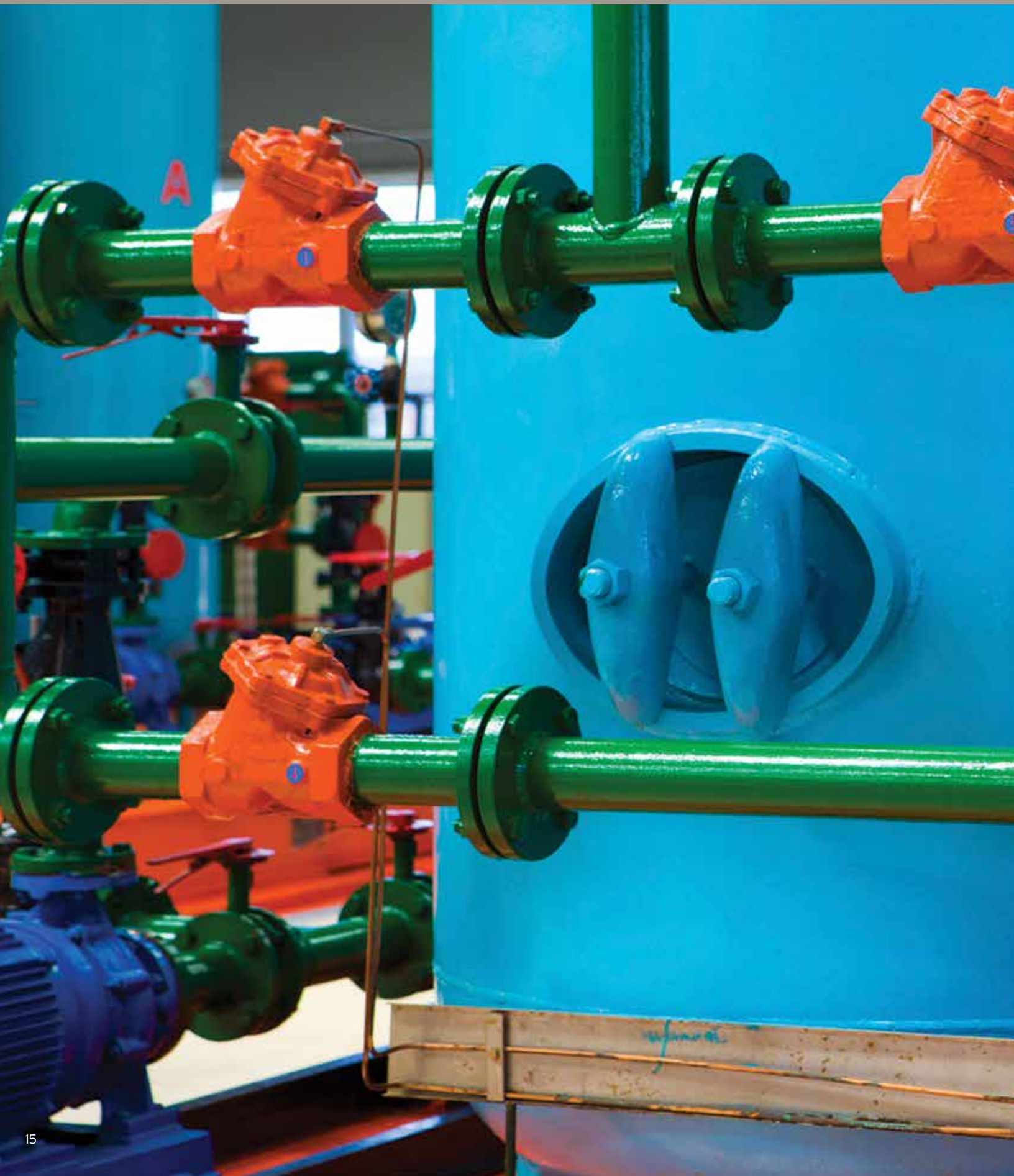
HU Caplugs No.	Figure	Working Pressure	To Fit Nominal Pipe Size (In)	Color	HU Carton Quantity *	FHU Caplugs No. Threaded For Female Sub	FHU Carton Quantity	VC Caplugs No. Non-Threaded For Female Sub **	VC Carton Quantity
HU-100-2	100	1,000	2	Yellow	50			VC-3500-32	100
HU-100-3	100	1,000	3	Yellow	50			VC-4875-32	100
HU-100-4	100	1,000	4	Yellow	50			VC-6125-32	50
HU-100-5	100	1,000	5	Yellow	50			VC-7250-28	40
HU-100-6	100	1,000	6	Yellow	50			VC-8750-32	30
HU-206-2	200/206/207	2,000	2	Yellow	50			VC-3375-28	200
HU-206-3	200/206/207	2,000	3	Yellow	50			VC-4813-32	100
HU-206-4	200/206/207	2,000	4	Yellow	50			VC-6125-32	50
HU-206-6	200/206/207	2,000	6	Yellow	50			VC-8750-32	30
HU-206-8	200/206/207	2,000	8	Yellow	25	FHU-206-8 w/tab	10	n/a	n/a
HU-602-2	602	6,000	2	Grey	100			VC-3500-32	100
HU-602-3	602	6,000	3	Grey	50			VC-5187-26	100
HU-602-4	602	6,000	4	Grey	50			VC-6000-28	90
HU-1002-4L	1002	10,000	4 (Long)	Black	50	FHU-1002-4	50	VC-6000-28	90
HU-1002-4S	1002	10,000	4 (Short)	Black	50			VC-6000-28	90
HU-1002-5	1002	10,000	5	Black	50			VC-7375-32	50
HU-1002-6	1002	10,000	6	Black	50			VC-8750-32	30
HU-1003-3	1003	10,000	3	Green	50			VC-5625-32	50
HU-1003-4/5	1003	10,000	4-5	Green	50			VC-6875-32	50
HU-1502-1	1502	15,000	1	Red	100			VC-2750-28	200
HU-1502-1 1/2	1502	15,000	1-1/2	Red	100			VC-3500-32	100
HU-1502-2	1502	15,000	2	Red	50	FHU-1502-2	50	VC-4000-32	100
HU-1502-3	1502	15,000	3	Red	50	FHU-1502-3	50	VC-5187-26	100
HU-1502-3HD	1502	15,000	3 (Heavy Duty)	Red	25	FHU-1502-3HD	25	VC-5500-28	100
HU-1502-4	1502	15,000	4	Red	50	FHU-1502-4	50	VC-6000-28	90
HU-1502-5	1502	15,000	5	Red	50			VC-7500-32	50
HU-1502-6	1502	15,000	6	Red	50			VC-8750-32	30

* Only sold in full carton quantities

** Recommended – Must sample VC style for length fit. We can accommodate different lengths.

Note: More new sizes are being added. Call 1-888-CAPPLUGS or check www.capplugs.com for the latest information. If you don't find the size you need in our standard offering, we'll build it for you.

Our hammer union protection is
30% less expensive than current
 comparable products.



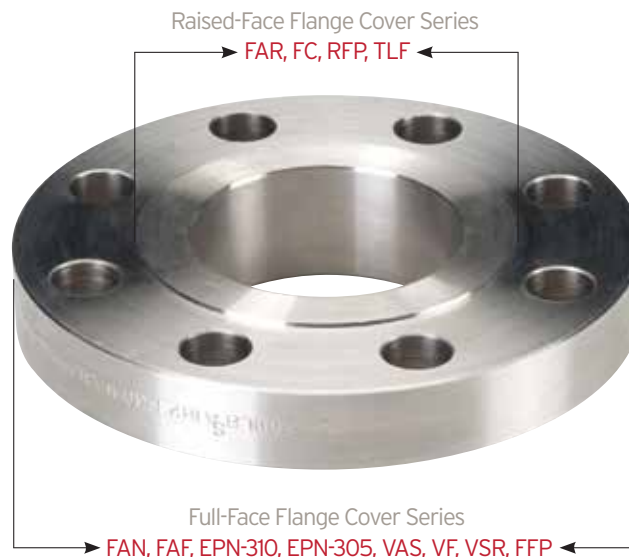
Flange Protection

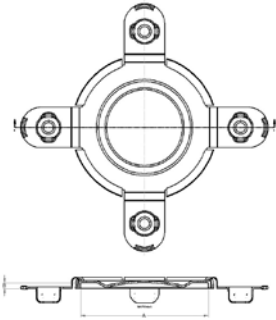


Caplugs full line of flange covers:

- Provides critical protection from damage and other contaminants
- Maintains the integrity of flange surfaces on valves, fittings, pumps and other products with connection points
- Available in a wide range of styles and sizes
- In-stock and ready to ship

Protection Options





Toggle Lock Flange Covers TLF Series

Engineered for ANSI B-16.5 flanges, our patent pending design with four hinged plugs can be pressed into bolt holes one at a time for faster installation than traditional covers. Features a thick pad for impact protection with reinforced walls to reduce warping and allow greater surface contact. Also permits use of a paint hook, or can be removed for a bolt.



Material: Low-Density Polyethylene **Color:** Blue, Red or Black

Caplugs No.	Pressure Class (lb)	Nominal Pipe Size (In)	API Nominal Flange Size	Carton Quantity	Mini Pak Quantity
TLF-150-0500	150	1/2		800	160
TLF-150-0750	150	3/4		700	140
TLF-150-1000	150	1		600	120
TLF-150-1250	150	1-1/4		500	100
TLF-150-1500	150	1-1/2		400	80
TLF-150-2000	150	2		300	60
TLF-150-2500	150	2-1/2		200	40
TLF-150-3000	150	3		200	40
TLF-150-3500	150	3-1/2		150	30
TLF-150-4000	150	4		150	30
TLF-150-6000	150	6		100	20
TLF-150-8000	150	8		30	6
TLF-150-10000	150	10		30	6
TLF-150-12000	150	12		40	8
TLF-150-14000	150	14		25	5
TLF-300-0500	300	1/2		700	140
TLF-300-0750	300	3/4		500	100
TLF-300-1000	300	1		400	80
TLF-300-1250	300	1-1/4		300	60
TLF-300-1500	300	1-1/2		250	50
TLF-300-2000	300	2		200	40
TLF-300-2500	300	2-1/2		150	30
TLF-300-3000	300	3		125	25
TLF-300-3500	300	3-1/2		100	20
TLF-300-4000	300	4		80	16
TLF-300-6000	300	6		50	10
TLF-300-8000	300	8		30	6
TLF-300-10000	300	10		30	6
TLF-300-12000	300	12		40	8
TLF-300-14000	300	14		50	10
TLF-600-4000	600	4	4-1/16 2000 #	100	20
TLF-600-6000	600	6	7-1/16 2000 #	30	6
TLF-600-8000	600	8	9 2000 #	30	6
TLF-600-10000	600	10	11 2000 #	30	6
TLF-600-12000	600	12	13-5/8 2000 #	50	10
TLF-900-2000	900/1500	2	2-1/16 3000 #	100	20
TLF-900-3000	900	3	3-1/8 3000 #	75	15
TLF-900-4000	900	4	4-1/16 3000 #	50	10
TLF-900-6000	900	6	7-1/16 3000 #	30	6
TLF-1500-3000	1500	3	3-1/8 5000 #	50	10
TLF-1500-4000	1500	4	4-1/16 5000 #	50	10
TLF-1500-6000	1500	6	7-1/16 5000 #	25	5
TLF-2500-2000	2500	2		100	20
TLF-2500-3000	2500	3		50	10

Easy Installation



150 pressure class – Standard color: Blue or Red

300 through 2500 pressure class – Standard color: Black

Easy Removal



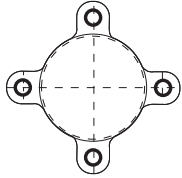
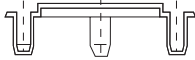


Snap-in Flange Protectors FC Series

Protector plugs snap into flange bolt holes with minimal pressure and no fastening devices. Resistant to petroleum residue.



Material: Low-Density Polyethylene **Color:** Blue - 150 lb. series Black - 300 lb. series



Caplugs No.	Dimensions		Carton Weight		Packaging		Caplugs No.	Dimensions		Carton Weight		Packaging	
	Nominal Size (In)		lbs	kgs	Carton Quantity	Mini Pak Quantity		Nominal Size (In)		lbs	kgs	Carton Quantity	Mini Pak Quantity
Used on 125 & 150 lb.						Used on 300, 400 & 600 lb.							
FC-150-0500	1/2		34	15.4	800	160	FC-300-0500	1/2	25	11.3	800	160	
FC-150-0750	3/4		26	11.8	800	160	FC-300-0750	3/4	21	9.5	500	100	
FC-150-1	1		45	20.4	600	120	FC-300-1	1	16	7.3	400	80	
FC-150-1500	1-1/2		32	14.5	400	80	FC-300-1500	1-1/2	20	9.1	250	50	
FC-150-2	2		15	6.8	200	40	FC-300-2	2	15	6.8	150	30	
FC-150-3	3		13	5.9	100	20	FC-300-3	3	15	6.8	100	20	
FC-150-4	4		17	7.7	100	20	FC-300-4 †	4	15	6.8	80	16	
FC-150-6	6		23	10.4	90	18	FC-300-6 †	6	28	12.7	100	20	
FC-150-8	8		49	22.2	100	20	FC-300-8 †	8	38	17.2	100	20	
FC-150-10	10		46	20.9	60	12	FC-300-10 †	10	36	16.3	60	12	
FC-150-12	12		48	21.8	40	8	FC-300-12 †	12	83	37.6	30	6	

† Will fit 300 lb. flanges only

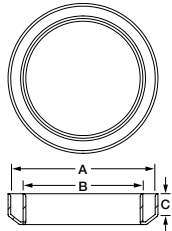


Weld Neck Covers WNC Series

Covers machined weld neck end of flange, opposite raised face, to avoid damage in transit or storage. Commonly used by carbon and stainless steel flange manufacturers.



Material: Vinyl **Color:** Black



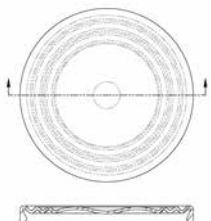
Caplugs No.	Nominal Pipe Size (In)	Dimensions						Packaging	
		A		B		C		Carton Quantity	Mini Pak Quantity
		In	mm	In	mm	In	mm		
WNC-0500	1/2	0.84	21.3	n/a	n/a	0.270	6.86	2500	500
WNC-1000	1	1.29	32.8	0.96	24.4	0.150	3.81	2500	500
WNC-1500	1-1/2	1.90	48.3	1.50	38.1	0.150	3.81	1000	200
WNC-2000	2	2.38	60.5	1.94	49.3	0.250	6.35	750	150
WNC-3000	3	3.50	88.9	2.90	73.7	0.500	12.7	250	50
WNC-4000	4	4.50	114.0	3.83	97.3	0.500	12.7	250	50
WNC-6000	6	6.63	168.0	5.76	146.0	0.630	16.0	100	20
WNC-8000	8	8.63	219.0	7.63	194.0	0.630	16.0	50	10

Raised-Face Flange Protectors RFP Series

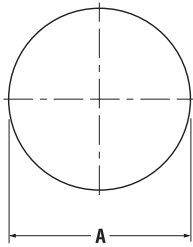
Designed for ANSI B-16.5 – pressure classes 400, 600, 900, 1500 and 2500 lb. Provides superior impact protection for raised-face surfaces with no fasteners required. Helps reduce SKU inventory and also serves as a low-temperature paint mask.



Material: Low-Density Polyethylene **Color:** Red



Caplugs No.	Pressure Class (lb)	Nominal Pipe Size (In)	Carton Quantity	Mini Pak Quantity
RFP-1000	400, 600, 900, 1500, 2500	1	1250	250
RFP-2000	400, 600, 900, 1500, 2500	2	500	100
RFP-2500	400, 600, 900, 1500, 2500	2-1/2	400	80
RFP-3000	400, 600, 900, 1500, 2500	3	300	60
RFP-4000	400, 600, 900, 1500, 2500	4	200	40
RFP-6000	400, 600, 900, 1500, 2500	6	100	20
RFP-8000	400, 600, 900, 1500, 2500	8	75	15



Full-Face Protectors FAF Series

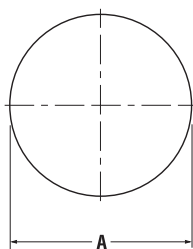
Self-adhesive flange parts conceal the entire face of flange and sealing surface. Protective backing is easily peeled off for quick installation. No residue is left on flange after removal. Sized in accordance to ANSI B-16.5 and ANSI B-16.47.



Material: High-Density Polyethylene Color: Black

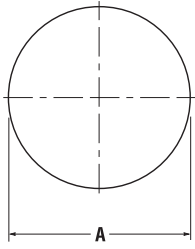
Caplugs No.	Dimensions			Packaging
	Nominal Size	A		Minimum Sales Quantity
		In	In	
75 Class Pressure Rating				
FAF-75-38	38	42.69	1084.33	2
FAF-75-40	40	44.69	1135.13	2
FAF-75-42	42	46.69	1185.93	2
FAF-75-44	44	49.25	1250.95	2
FAF-75-46	46	51.25	1301.75	2
FAF-75-48	48	53.25	1352.55	2
FAF-75-26	26	30.00	762.00	2
FAF-75-28	28	32.00	812.80	2
FAF-75-30	30	34.00	863.60	2
FAF-75-32	32	36.00	914.40	2
FAF-75-34	34	38.00	965.20	2
FAF-75-36	36	40.69	1033.53	2
150 Class Pressure Rating				
FAF-150-1/2	1/2	3.50	88.87	100
FAF-150-3/4	3/4	3.88	98.51	75
FAF-150-1	1	4.25	107.91	50
FAF-150-1-1/4	1-1/4	4.63	117.43	50
FAF-150-1-1/2	1-1/2	5.00	126.95	50
FAF-150-2	2	6.00	152.34	35
FAF-150-2-1/2	2-1/2	7.00	177.73	25
FAF-150-3	3	7.50	190.43	25
FAF-150-3-1/2	3-1/2	8.50	215.82	20
FAF-150-4	4	9.00	228.51	15
FAF-150-5	5	10.00	253.90	15
FAF-150-6	6	11.00	279.29	10
FAF-150-8	8	13.50	342.77	8
FAF-150-10	10	16.00	406.24	5
FAF-150-12	12	19.00	482.41	4
FAF-150-14	14	21.00	533.19	4
FAF-150-16	16	23.50	596.67	2
FAF-150-18	18	25.00	634.75	2
FAF-150-20	20	27.50	698.23	2
FAF-150-22	22	29.50	749.30	2
FAF-150-24	24	32.00	812.80	2
FAF-150-26A	26	34.25	869.95	2
FAF-150-26B	26	30.94	785.88	2
FAF-150-28A	28	36.50	927.10	2
FAF-150-28B	28	32.94	836.68	2
FAF-150-30A	30	38.75	984.25	2
FAF-150-30B	30	34.94	887.48	2
FAF-150-32A	32	41.75	1060.45	2
FAF-150-32B	32	37.06	941.32	2
FAF-150-34A	34	43.75	1111.25	2
FAF-150-34B	34	39.56	1004.82	2
FAF-150-36A	36	46.00	1168.40	2
FAF-150-36B	36	41.62	1057.15	2
FAF-150-38A	38	48.75	1238.25	2
FAF-150-38B	38	44.25	1123.95	2
FAF-150-40A	40	50.75	1289.05	2
FAF-150-40B	40	46.25	1174.75	2
FAF-150-42A	42	53.00	1346.20	2
FAF-150-42B	42	48.25	1225.55	2
300 Class Pressure Rating				
FAF-300-1/2	1/2	3.75	95.21	75
FAF-300-3/4	3/4	4.63	117.43	50
FAF-300-1	1	4.88	123.90	50
FAF-300-1-1/4	1-1/4	5.25	133.30	40
FAF-300-1-1/2	1-1/2	6.19	157.16	35
FAF-300-2	2	6.50	165.04	30
FAF-300-2-1/2	2-1/2	7.50	190.43	25
FAF-300-3	3	8.25	209.47	20
FAF-300-3-1/2	3-1/2	9.00	228.51	15
FAF-300-4	4	10.00	253.90	15
FAF-300-5	5	11.00	279.29	10
FAF-300-6	6	12.50	317.38	10
FAF-300-8	8	15.00	380.85	5
FAF-300-10	10	17.50	444.33	5
FAF-300-12	12	20.50	520.50	4

Full-Face Protectors FAF Series (cont.)



Caplugs No.	Dimensions			Packaging
	Nominal Size	A		Minimum Sales Quantity
		In	In	
300 Class Pressure Rating (cont.)				
FAF-300-14	14	23.00	583.97	2
FAF-300-16	16	25.50	647.45	2
FAF-300-18	18	28.00	710.92	2
FAF-300-20	20	30.50	774.70	2
FAF-300-22	22	33.00	838.20	2
FAF-300-24	24	36.00	914.40	2
FAF-300-26A	26	38.25	971.55	2
FAF-300-26B	26	34.12	866.65	2
FAF-300-28A	28	40.75	1035.05	2
FAF-300-28B	28	36.25	920.75	2
FAF-300-30A	30	43.00	1092.20	2
FAF-300-30B	30	39.00	990.60	2
FAF-300-32A	32	45.25	1149.35	2
FAF-300-32B	32	41.50	1054.10	2
FAF-300-34A	34	47.50	1206.50	2
FAF-300-34B	34	43.62	1107.95	2
FAF-300-36A	36	50.00	1270.00	2
FAF-300-36B	36	46.12	1171.45	2
FAF-300-38A	38	46.00	1168.40	2
FAF-300-38B	38	48.12	1222.25	2
FAF-300-40A	40	48.75	1238.25	2
FAF-300-40B	40	50.12	1273.05	2
FAF-300-42A	42	50.75	1289.05	2
FAF-300-42B	42	52.50	1333.50	2
400 Class Pressure Rating				
FAF-400-1/2	1/2	3.75	95.25	75
FAF-400-3/4	3/4	4.62	117.35	50
FAF-400-1	1	4.88	123.95	50
FAF-400-1 1/4	1-1/4	5.25	133.35	40
FAF-400-1 1/2	1-1/2	6.12	155.45	35
FAF-400-2	2	6.50	165.10	35
FAF-400-2 1/2	2-1/2	7.50	190.50	25
FAF-400-3	3	8.25	209.55	20
FAF-400-3 1/2	3-1/2	9.00	228.60	15
FAF-400-4	4	10.00	254.00	15
FAF-400-5	5	11.00	279.40	10
FAF-400-6	6	12.50	317.50	10
FAF-400-8	8	15.00	381.00	5
FAF-400-10	10	17.50	444.50	5
FAF-400-12	12	20.50	520.70	4
FAF-400-14	14	23.00	584.20	2
FAF-400-16	16	25.50	647.70	2
FAF-400-18	18	28.00	711.20	2
FAF-400-20	20	30.50	774.70	2
FAF-402-22	20	33.00	838.20	2
FAF-400-24	24	36.00	914.40	2
FAF-400-26A	26	38.25	971.55	2
FAF-400-26B	26	33.50	850.90	2
FAF-400-28A	28	40.75	1035.05	2
FAF-400-28B	28	36.00	914.40	2
FAF-400-30A	30	43.00	1092.20	2
FAF-400-30B	30	38.25	971.55	2
FAF-400-32A	32	45.25	1149.35	2
FAF-400-32B	32	40.75	1035.05	2
FAF-400-34A	34	47.50	1206.50	2
FAF-400-34B	34	42.75	1085.85	2
FAF-400-36A	36	50.00	1270.00	2
FAF-400-36B	36	45.50	1155.70	2
FAF-400-38A	38	47.50	1206.50	2
FAF-400-38B	38	47.50	1206.50	2
FAF-400-40A	40	50.00	1270.00	2
FAF-400-40B	40	50.00	1270.00	2
FAF-400-42A	42	52.00	1320.80	2
FAF-400-42B	42	52.00	1320.80	2
600 Class Pressure Rating				
FAF-600-1/2	1/2	3.75	95.25	75
FAF-600-3/4	3/4	4.62	117.35	50
FAF-600-1	1	4.88	123.95	50
FAF-600-1 1/4	1-1/4	5.25	133.35	50
FAF-600-1 1/2	1-1/2	6.12	155.45	35
FAF-600-2	2	6.50	165.10	30
FAF-600-2 1/2	2-1/2	7.50	190.50	25
FAF-600-3	3	8.25	209.55	20
FAF-600-3 1/2	3-1/2	9.00	228.60	15
FAF-600-4	4	10.75	273.05	10
FAF-600-5	5	13.00	330.20	8

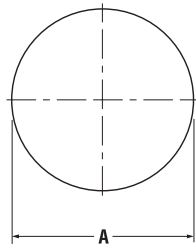
Full-Face Protectors FAF Series (cont.)



Caplugs No.	Dimensions			Packaging
	Nominal Size	A		Minimum Sales Quantity
		In	In	
600 Class Pressure Rating (cont.)				
FAF-600-6	6	14.00	355.60	5
FAF-600-8	8	16.50	419.10	5
FAF-600-10	10	20.00	508.00	4
FAF-600-12	12	22.00	558.80	4
FAF-600-14	14	23.75	603.25	2
FAF-600-16	16	27.00	685.80	2
FAF-600-18	18	29.25	742.95	2
FAF-600-20	20	32.00	812.80	2
FAF-600-22	22	34.25	869.95	2
FAF-600-24	24	37.00	939.80	2
FAF-600-26A	26	40.00	1016.00	2
FAF-600-26B	26	35.00	889.00	2
FAF-600-28A	28	42.25	1073.15	2
FAF-600-28B	28	37.50	952.50	2
FAF-600-30A	30	44.50	1130.30	2
FAF-600-30B	30	40.25	1022.35	2
FAF-600-32A	32	47.00	1193.80	2
FAF-600-32B	32	42.75	1085.85	2
FAF-600-34A	34	49.00	1244.60	2
FAF-600-34B	34	45.75	1162.05	2
FAF-600-36A	36	51.75	1314.45	2
FAF-600-36B	36	47.75	1212.85	2
FAF-600-38A	38	50.00	1270.00	2
FAF-600-38B	38	50.00	1270.00	2
FAF-600-40A	40	52.00	1320.80	2
FAF-600-40B	40	52.00	1320.80	2
900 Class Pressure Rating				
FAF-900-1/2	1/2	4.75	120.65	50
FAF-900-3/4	3/4	5.12	130.05	50
FAF-900-1	1	5.88	149.35	40
FAF-900-1 1/4	1-1/4	6.25	158.75	40
FAF-900-1 1/2	1-1/2	7.00	177.80	25
FAF-900-2	2	8.50	215.90	20
FAF-900-2 1/2	2-1/2	9.62	244.35	15
FAF-900-3	3	9.50	241.30	15
FAF-900-4	4	11.50	292.10	10
FAF-900-5	5	13.75	349.25	8
FAF-900-6	6	15.00	381.00	5
FAF-900-8	8	18.50	469.90	4
FAF-900-10	10	21.50	546.10	4
FAF-900-12	12	24.00	609.60	2
FAF-900-14	14	25.25	641.35	2
FAF-900-16	16	27.75	704.85	2
FAF-900-18	18	31.00	787.40	2
FAF-900-20	20	33.75	857.25	2
FAF-900-24	24	41.00	1041.40	2
FAF-900-26A	26	42.75	1085.85	2
FAF-900-26B	26	40.25	1022.35	2
FAF-900-28A	28	46.00	1168.40	2
FAF-900-28B	28	43.50	1104.90	2
FAF-900-30A	30	48.50	1231.90	2
FAF-900-30B	30	46.50	1181.10	2
FAF-900-32A	32	51.75	1314.45	2
FAF-900-32B	32	48.75	1238.25	2
FAF-900-34A	34	55.00	1397.00	2
FAF-900-34B	34	51.75	1314.45	2
1500 Class Pressure Rating				
FAF-1500-1/2	1/2	4.75	120.65	50
FAF-1500-3/4	3/4	5.12	130.05	50
FAF-1500-1	1	5.88	149.35	40
FAF-1500-1 1/4	1-1/4	6.25	158.75	35
FAF-1500-1 1/2	1-1/2	7.00	177.80	25
FAF-1500-2	2	8.50	215.90	20
FAF-1500-2 1/2	2-1/2	9.62	244.35	15
FAF-1500-3	3	10.50	266.70	10
FAF-1500-4	4	12.25	311.15	10
FAF-1500-5	5	14.75	374.65	5
FAF-1500-6	6	15.50	393.70	5
FAF-1500-8	8	19.00	482.60	4
FAF-1500-10	10	23.00	584.20	2
FAF-1500-12	12	26.50	673.10	2
FAF-1500-14	14	29.50	749.30	2
FAF-1500-16	16	32.50	825.50	2
FAF-1500-18	18	36.00	914.40	2
FAF-1500-20	20	38.75	984.25	2
FAF-1500-24	24	46.00	1168.40	2

Full-Face Protectors FAF Series (cont.)

Caplugs No.	Dimensions			Packaging
	Nominal Size	A		Minimum Sales Quantity
		In	In	
2500 Class Pressure Rating (cont.)				
FAF-2500-1/2	1/2	5.25	133.35	50
FAF-2500-3/4	3/4	5.50	139.70	40
FAF-2500-1	1	6.25	158.75	35
FAF-2500-1 1/4	1-1/4	7.25	184.15	25
FAF-2500-1 1/2	1-1/2	8.00	203.20	20
FAF-2500-2	2	9.25	234.95	15
FAF-2500-2 1/2	2-1/2	10.50	266.70	10
FAF-2500-3	3	12.00	304.80	10
FAF-2500-4	4	14.00	355.60	8
FAF-2500-5	5	16.50	419.10	5
FAF-2500-6	6	19.00	482.60	4
FAF-2500-8	8	21.75	552.45	4
FAF-2500-10	10	26.50	673.10	2
FAF-2500-12	12	30.00	762.00	2



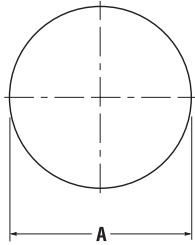
Raised-Face Protectors FAR Series

Self-adhesive covers preserve sealing surfaces on any ANSI B-16.5 and ANSI B-16.47 raised-face flange. Simply peel back off and press on. Remains intact with adhesive until removed, leaving no film residue.



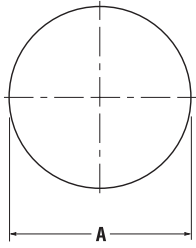
Material: High-Density Polyethylene **Color:** Black

Caplugs No.	Dimensions			Packaging
	Nominal Size	A		Minimum Sales Quantity
		In	In	
All Classes				
FAR-1/2	1/2	1.38	35.04	100
FAR-3/4	3/4	1.69	42.91	100
FAR-1	1	2.00	50.78	100
FAR-1-1/4	1-1/4	2.50	63.48	80
FAR-1-1/2	1-1/2	2.88	73.12	80
FAR-2	2	3.62	91.95	75
FAR-2-1/2	2-1/2	4.12	104.65	75
FAR-3	3	5.00	127.00	50
FAR-3-1/2	3-1/2	5.50	139.70	50
FAR-4	4	6.19	157.23	35
FAR-5	5	7.31	185.67	25
FAR-6	6	8.50	215.90	20
FAR-8	8	10.62	269.75	10
FAR-10	10	12.75	323.85	10
FAR-12	12	15.00	381.00	5
FAR-14	14	16.25	412.75	5
FAR-16	16	18.50	469.90	5
FAR-18	18	21.00	533.40	4
FAR-20	20	23.00	584.20	2
FAR-22	22	25.25	641.35	2
FAR-24	24	27.25	692.15	2
26" to 48" Class Pressure Rating A 150 Flanges				
FAR-26A	26	29.50	749.30	2
FAR-28A	28	31.50	800.10	2
FAR-30A	30	33.75	857.25	2
FAR-32A	32	36.00	914.40	2
FAR-34A	34	38.00	965.20	2
FAR-36A	36	40.25	1022.35	2
FAR-38A	38	42.25	1073.15	2
FAR-40A	40	44.25	1123.95	2
FAR-42A	42	47.00	1193.80	2
FAR-44A	44	49.00	1244.60	2
FAR-46A	46	51.00	1295.40	2
FAR-48A	48	53.50	1358.90	2
26" to 50" Class Pressure Rating B 150 Flanges				
FAR-150-26B	26	28.00	711.20	2
FAR-150-28B	28	30.00	762.00	2
FAR-150-30B	30	32.00	812.80	2
FAR-150-32B	32	34.00	863.60	2
FAR-150-34B	34	36.25	920.75	2
FAR-150-36B	36	38.25	971.55	2
FAR-150-38B	38	40.25	1022.35	2
FAR-150-40B	40	42.50	1079.50	2
FAR-150-42B	42	44.50	1130.30	2



Raised-Face Protectors FAR Series (cont.)

Caplugs No.	Dimensions			Packaging
	Nominal Size	A		Minimum Sales Quantity
		In	In	
26" to 50" Class Pressure Rating B 150 Flanges (cont.)				
FAR-150-44B	44	46.50	1181.10	2
FAR-150-46B	46	48.62	1234.95	2
FAR-150-48B	48	50.75	1289.05	2
FAR-150-50B	50	52.75	1339.85	2
26" to 50" Class Pressure Rating A 300 Flanges				
FAR-300-26A	26	29.50	749.30	2
FAR-300-28A	28	31.50	800.10	2
FAR-300-30A	30	33.75	857.25	2
FAR-300-32A	32	36.00	914.40	2
FAR-300-34A	34	38.00	965.20	2
FAR-300-36A	36	40.25	1022.35	2
FAR-300-38A	38	40.50	1028.70	2
FAR-300-40A	40	42.75	1085.85	2
FAR-300-42A	42	44.75	1136.65	2
FAR-300-44A	44	47.00	1193.80	2
FAR-300-46A	46	49.00	1244.60	2
FAR-300-48A	48	51.25	1301.75	2
FAR-300-50A	50	53.50	1358.90	2
26" to 48" Class Pressure Rating B 300 Flanges				
FAR-300-26B	26	29.00	736.60	2
FAR-300-28B	28	31.00	787.40	2
FAR-300-30B	30	33.25	844.55	2
FAR-300-32B	32	35.50	901.70	2
FAR-300-34B	34	37.50	952.50	2
FAR-300-36B	36	39.75	1009.65	2
FAR-300-38B	38	41.75	1060.45	2
FAR-300-40B	40	43.88	1114.55	2
FAR-300-42B	42	46.00	1168.40	2
FAR-300-44B	44	48.00	1219.20	2
FAR-300-46B	46	50.00	1270.00	2
FAR-300-48B	48	52.25	1327.15	2
26" to 50" Class Pressure Rating A 400 Flanges				
FAR-400-26A	26	29.50	749.30	2
FAR-400-28A	28	31.50	800.10	2
FAR-400-30A	30	33.75	857.25	2
FAR-400-32A	32	36.00	914.40	2
FAR-400-34A	34	38.00	965.20	2
FAR-400-36A	36	40.25	1022.35	2
FAR-400-38A	38	40.75	1035.05	2
FAR-400-40A	40	43.00	1092.20	2
FAR-400-42A	42	45.00	1143.00	2
FAR-400-44A	44	47.25	1200.15	2
FAR-400-46A	46	49.50	1257.30	2
FAR-400-48A	48	51.50	1308.10	2
FAR-400-50A	50	53.62	1361.95	2
26" to 50" Class Pressure Rating B 400 Flanges				
FAR-400-26B	26	28.00	711.20	2
FAR-400-28B	28	30.00	762.00	2
FAR-400-30B	30	32.25	819.15	2
FAR-400-32B	32	34.38	873.25	2
FAR-400-34B	34	36.50	927.10	2
FAR-400-36B	36	38.62	980.95	2
FAR-400-38B	38	40.75	1035.05	2
FAR-400-40B	40	43.00	1092.20	2
FAR-400-42B	42	45.00	1143.00	2
FAR-400-44B	44	47.25	1200.15	2
FAR-400-46B	46	49.50	1257.30	2
FAR-400-48B	48	51.50	1308.10	2
FAR-400-50B	50	53.62	1361.95	2
26" to 48" Class Pressure Rating A 600 Flanges				
FAR-600-26A	26	29.50	749.30	2
FAR-600-28A	28	31.50	800.10	2
FAR-600-30A	30	33.75	857.25	2
FAR-600-32A	32	36.00	914.40	2
FAR-600-34A	34	38.00	965.20	2
FAR-600-36A	36	40.25	1022.35	2
FAR-600-38A	38	41.50	1054.10	2
FAR-600-40A	40	43.75	1111.25	2
FAR-600-42A	42	46.00	1168.40	2
FAR-600-44A	44	48.25	1225.55	2
FAR-600-46A	46	50.25	1276.35	2
FAR-600-48A	48	52.50	1333.50	2



Raised-Face Protectors FAR Series (cont.)

Caplugs No.	Dimensions			Packaging
	Nominal Size	A		Minimum Sales Quantity
	In	In	mm	
26" to 48" Class Pressure Rating B 600 Flanges				
FAR-600-26B	26	28.62	726.95	2
FAR-600-28B	28	30.88	784.35	2
FAR-600-30B	30	33.12	841.25	2
FAR-600-32B	32	35.25	895.35	2
FAR-600-34B	34	37.50	952.50	2
FAR-600-36B	36	39.75	1009.65	2
FAR-600-38A	38	41.50	1054.10	2
FAR-600-40B	40	43.75	1111.25	2
FAR-600-42B	42	46.00	1168.40	2
FAR-600-44B	44	48.25	1225.55	2
FAR-600-46B	46	50.25	1276.35	2
FAR-600-48B	48	52.50	1333.50	2
26" to 46" Class Pressure Rating A 900 Flanges				
FAR-900-26A	26	29.50	749.30	2
FAR-900-28A	28	31.50	800.10	2
FAR-900-30A	30	33.75	857.25	2
FAR-900-32A	32	36.00	914.40	2
FAR-900-34A	34	38.00	965.20	2
FAR-900-36A	36	40.25	1022.35	2
FAR-900-38A	38	43.25	1098.55	2
FAR-900-40A	40	45.75	1162.05	2
FAR-900-42A	42	47.75	1212.85	2
FAR-900-44A	44	50.00	1270.00	2
FAR-900-46A	46	52.50	1333.50	2
26" to 46" Class Pressure Rating B 900 Flanges				
FAR-900-26B	26	30.00	762.00	2
FAR-900-28B	28	32.25	819.15	2
FAR-900-30B	30	34.50	876.30	2
FAR-900-32B	32	36.50	927.10	2
FAR-900-34B	34	39.00	990.60	2
FAR-900-36B	36	40.50	1028.70	2
FAR-900-38B	38	43.25	1098.55	2
FAR-900-40B	40	45.75	1162.05	2
FAR-900-42B	42	47.75	1212.85	2
FAR-900-44B	44	50.00	1270.00	2
FAR-900-46B	46	52.50	1333.50	2
26" to 50" Class Pressure Rating B 75 Flanges				
FAR-75-26B	26	27.75	704.85	2
FAR-75-28B	28	29.75	755.65	2
FAR-75-30B	30	31.75	806.45	2
FAR-75-32B	32	33.75	857.25	2
FAR-75-34B	34	35.75	908.05	2
FAR-75-36B	36	38.00	965.20	2
FAR-75-38B	38	40.00	1016.00	2
FAR-75-40B	40	42.00	1066.80	2
FAR-75-42B	42	44.00	1117.60	2
FAR-75-44B	44	46.25	1174.75	2
FAR-75-46B	46	48.25	1225.55	2
FAR-75-48B	48	50.25	1276.35	2
FAR-75-50B	50	52.25	1327.15	2



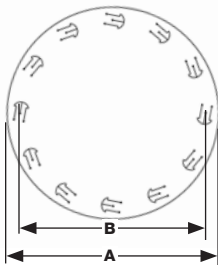
Finger-Lock Flange Covers FFP Series

New die-cut configuration featuring locking bolt hole tabs to keep protector in place without adhesive or separate fasteners.



Material: Low-Density Polyethylene **Color:** Black

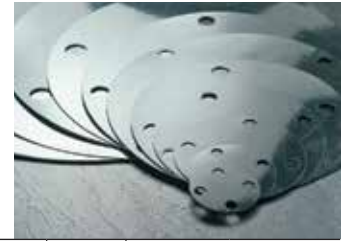
Caplugs No.	Nominal Pipe Size (In)	Dimension A (In)	Dimension B (In)	Carton Quantity
FFP-150-1	1	4.25	3.12	50
FFP-150-2	2	6.00	4.75	50
FFP-300-6	6	12.50	10.62	50
FFP-600-4	4	10.75	8.50	50
FFP-900-6	6	15.00	12.50	50
FFP-1500-6	6	15.50	12.50	50
FFP-2500-2	2	9.25	6.75	50



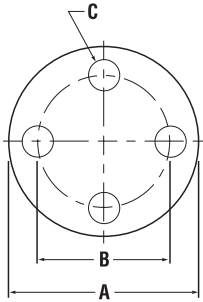


Flange Covers with Bolt Holes FAN Series

Securely covers full face of any ANSI B-16.5 and ANSI B-16.47 flanges and sealing surfaces with use of additional plugs (FBH Series) or cable ties (CAB Series) through four bolt holes.



Material: High-Density Polyethylene Color: Black



Captugs No.	Dimensions							Min Sales Quantity	Fasteners	
	Nom Pipe Size (In)	A		B		C			Matching Bolt Hole Plug	Cable Tie
		In	mm	In	mm	In	mm			

75 Class Pressure Rating

FAN-75-26	26	30.00	762.00	28.50	723.90	.81	20.62	5	FBH-750	CAB-B11SOM
FAN-75-28	28	32.00	812.80	30.50	774.70	.81	20.62	4	FBH-750	CAB-B11SOM
FAN-75-30	30	34.00	863.60	32.50	825.50	.81	20.62	2	FBH-750	CAB-B11SOM
FAN-75-32	32	36.00	914.40	34.50	876.30	.81	20.62	2	FBH-750	CAB-B11SOM
FAN-75-34	34	38.00	965.20	36.50	927.10	.81	20.62	2	FBH-750	CAB-B11SOM
FAN-75-36	36	40.69	1033.53	39.06	992.12	.94	23.93	2	FBH-875	CAB-B11SOM
FAN-75-38	38	42.69	1084.33	41.06	1042.92	.94	23.93	2	FBH-875	CAB-B11SOM
FAN-75-40	40	44.69	1135.13	43.06	1093.72	.94	23.93	2	FBH-875	CAB-B11SOM
FAN-75-42	42	46.69	1185.93	45.06	1144.52	.94	23.93	2	FBH-875	CAB-B11SOM
FAN-75-44	44	49.25	1250.95	47.38	1203.45	1.06	26.97	2	FBH-1000	CAB-B11SOM
FAN-75-46	46	51.25	1301.75	49.38	1254.25	1.06	26.97	2	FBH-1000	CAB-B11SOM
FAN-75-48	48	53.25	1352.55	51.38	1305.05	1.06	26.97	2	FBH-1000	CAB-B14SOM
FAN-75-50	50	55.25	1403.35	53.38	1355.85	1.06	26.97	2	FBH-1000	CAB-B14SOM
FAN-75-52	52	57.38	1457.45	55.50	1409.70	1.06	26.97	2	FBH-1000	CAB-B14SOM
FAN-75-54	54	59.38	1508.25	57.50	1460.50	1.06	26.97	2	FBH-1000	CAB-B14SOM

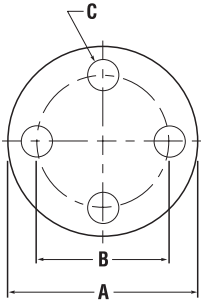
150 Class Pressure Rating

FAN-150-1/2	1/2	3.50	88.90	2.38	60.45	.68	17.32	150	FBH-625	CAB-B7SOM
FAN-150-3/4	3/4	3.88	98.55	2.75	69.85	.68	17.32	150	FBH-625	CAB-B7SOM
FAN-150-1	1	4.25	107.95	3.12	79.25	.68	17.32	100	FBH-625	CAB-B7SOM
FAN-150-1-1/4	1-1/4	4.62	117.35	3.50	88.90	.68	17.32	100	FBH-625	CAB-B7SOM
FAN-150-1-1/2	1-1/2	5.00	127.00	3.88	98.55	.68	17.32	100	FBH-625	CAB-B7SOM
FAN-150-2	2	6.00	152.40	4.75	120.65	.68	17.32	75	FBH-625	CAB-B7SOM
FAN-150-2-1/2	2-1/2	7.00	177.80	5.50	139.70	.81	20.62	50	FBH-750	CAB-B11SOM
FAN-150-3	3	7.50	190.50	6.00	152.40	.81	20.62	50	FBH-750	CAB-B11SOM
FAN-150-3-1/2	3-1/2	8.50	215.90	7.00	177.80	.81	20.62	50	FBH-750	CAB-B11SOM
FAN-150-4	4	9.00	228.60	7.50	190.50	.81	20.62	40	FBH-750	CAB-B11SOM
FAN-150-5	5	10.00	254.00	8.50	215.90	.94	23.93	35	FBH-875	CAB-B11SOM
FAN-150-6	6	11.00	279.40	9.50	241.30	.94	23.93	25	FBH-875	CAB-B11SOM
FAN-150-8	8	13.50	342.90	11.75	298.45	.94	23.93	20	FBH-875	CAB-B11SOM
FAN-150-10	10	16.00	406.40	14.25	361.95	1.06	26.97	15	FBH-1000	CAB-B11SOM
FAN-150-12	12	19.00	482.60	17.00	431.80	1.06	26.97	10	FBH-1000	CAB-B11SOM
FAN-150-14	14	21.00	533.40	18.75	476.25	1.18	30.02	10	FBH-1125	CAB-B11SOM
FAN-150-16	16	23.50	596.90	21.25	539.75	1.18	30.02	5	FBH-1125	CAB-B11SOM
FAN-150-18	18	25.00	635.00	22.75	577.85	1.31	33.32	5	FBH-1250	CAB-B11SOM
FAN-150-20	20	27.50	698.50	25.00	635.00	1.31	33.32	5	FBH-1250	CAB-B11SOM
FAN-150-22	22	29.50	749.30	27.25	692.15	1.44	36.63	5	FBH-1375	CAB-B11SOM
FAN-150-24	24	32.00	812.80	29.50	749.30	1.44	36.63	4	FBH-1375	CAB-B14SOM
FAN-150-26A	26	34.25	869.95	31.75	806.45	1.44	36.63	4	FBH-1375	CAB-B14SOM
FAN-150-26B	26	30.94	785.88	29.31	744.47	.94	23.93	4	FBH-875	CAB-B11SOM
FAN-150-28A	28	36.50	927.10	34.00	863.60	1.44	36.63	2	FBH-1375	CAB-B14SOM
FAN-150-28B	28	32.94	836.68	31.31	795.27	.94	23.93	2	FBH-875	CAB-B11SOM
FAN-150-30A	30	38.75	984.25	36.00	914.40	1.44	36.63	2	FBH-1375	CAB-B14SOM
FAN-150-30B	30	34.94	887.48	33.31	846.07	.94	23.93	2	FBH-875	CAB-B11SOM
FAN-150-32A	32	41.75	1060.45	38.50	977.90	1.68	42.72	2	FBH-1625	CAB-B24HOL
FAN-150-32B	32	37.06	941.32	35.44	900.18	.94	23.93	2	FBH-875	CAB-B11SOM
FAN-150-34A	34	43.75	1111.25	40.50	1028.70	1.68	42.72	2	FBH-1625	CAB-B24HOL
FAN-150-34B	34	39.56	1004.82	37.69	957.33	1.06	26.97	2	FBH-1000	CAB-B11SOM
FAN-150-36A	36	46.00	1168.40	42.75	1085.85	1.68	42.72	2	FBH-1625	CAB-B24HOL
FAN-150-36B	36	41.62	1057.15	39.75	1009.65	1.06	26.97	2	FBH-1000	CAB-B11SOM
FAN-150-38A	38	48.75	1238.25	45.25	1149.35	1.68	42.72	2	FBH-1625	CAB-B24HOL
FAN-150-38B	38	44.25	1123.95	42.12	1069.85	1.18	30.02	2	FBH-1125	CAB-B14SOM
FAN-150-40A	40	50.75	1289.05	47.25	1200.15	1.68	42.72	2	FBH-1625	CAB-B24HOL
FAN-150-40B	40	46.25	1174.75	44.12	1120.65	1.18	30.02	2	FBH-1125	CAB-B14SOM
FAN-150-42A	42	53.00	1346.20	49.50	1257.30	1.68	42.72	2	FBH-1625	CAB-B24HOL
FAN-150-42B	42	48.25	1225.55	46.12	1171.45	1.18	30.02	2	FBH-1125	CAB-B14SOM
FAN-150-44A	44	55.25	1403.35	51.75	1314.45	1.68	42.72	2	FBH-1625	CAB-B24HOL
FAN-150-44B	44	50.25	1276.35	48.12	1222.25	1.18	30.02	2	FBH-1125	CAB-B14SOM
FAN-150-46A	46	57.25	1454.15	53.75	1365.25	1.68	42.72	2	FBH-1625	CAB-B24HOL
FAN-150-46B	46	52.81	1341.37	50.56	1284.22	1.31	33.32	2	FBH-1250	CAB-B14SOM
FAN-150-48A	48	59.50	1511.30	56.00	1422.40	1.68	42.72	2	FBH-1625	CAB-B24HOL
FAN-150-48B	48	54.81	1392.17	52.56	1335.02	1.31	33.32	2	FBH-1250	CAB-B14SOM

300 Class Pressure Rating

FAN-300-1/2	1/2	3.75	95.25	2.62	66.55	.68	17.32	150	FBH-625	CAB-B7SOM
FAN-300-3/4	3/4	4.62	117.35	3.25	82.55	.81	20.62	100	FBH-750	CAB-B7SOM
FAN-300-1	1	4.88	123.95	3.50	88.90	.81	20.62	100	FBH-750	CAB-B7SOM
FAN-300-1-1/4	1-1/4	5.25	133.35	3.88	98.55	.81	20.62	100	FBH-750	CAB-B7SOM
FAN-300-1-1/2	1-1/2	6.12	155.45	4.50	114.30	.94	23.93	75	FBH-875	CAB-B11SOM
FAN-300-2	2	6.50	165.10	5.00	127.00	.81	20.62	75	FBH-750	CAB-B11SOM
FAN-300-2-1/2	2-1/2	7.50	190.50	5.88	149.35	.94	23.93	50	FBH-875	CAB-B11SOM

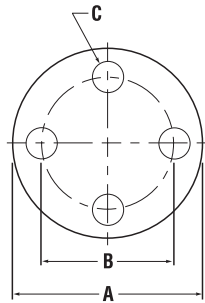
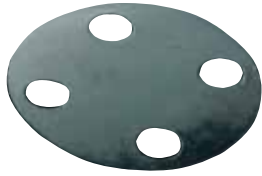
Flange Covers with Bolt Holes FAN Series (cont.)



Caplugs No.	Dimensions							Min Sales Quantity	Fasteners	
	Nom Pipe Size (In)	A		B		C			Matching Bolt Hole Plug	Cable Tie
		In	mm	In	mm	In	mm			
300 Class Pressure Rating (cont.)										
FAN-300-3	3	8.25	209.55	6.62	168.15	.94	23.93	50	FBH-875	CAB-B11SOM
FAN-300-3-1/2	3-1/2	9.00	228.60	7.25	184.15	.94	23.93	40	FBH-875	CAB-B11SOM
FAN-300-4	4	10.00	254.00	7.88	200.15	.94	23.93	35	FBH-875	CAB-B11SOM
FAN-300-5	5	11.00	279.40	9.25	234.95	.94	23.93	25	FBH-875	CAB-B11SOM
FAN-300-6	6	12.50	317.50	10.62	269.75	.94	23.93	25	FBH-875	CAB-B11SOM
FAN-300-8	8	15.00	381.00	13.00	330.20	1.06	26.97	15	FBH-1000	CAB-B11SOM
FAN-300-10	10	17.50	444.50	15.25	387.35	1.18	30.02	10	FBH-1125	CAB-B11SOM
FAN-300-12	12	20.50	520.70	17.75	450.85	1.31	33.32	10	FBH-1250	CAB-B11SOM
FAN-300-14	14	23.00	584.20	20.25	514.35	1.31	33.32	8	FBH-1250	CAB-B11SOM
FAN-300-16	16	25.50	647.70	22.50	571.50	1.44	36.63	5	FBH-1375	CAB-B11SOM
FAN-300-18	18	28.00	711.20	24.75	628.65	1.44	36.63	5	FBH-1375	CAB-B14SOM
FAN-300-20	20	30.50	774.70	27.00	685.80	1.44	36.63	5	FBH-1375	CAB-B14SOM
FAN-300-22	22	33.00	838.20	29.25	742.95	1.68	42.72	2	FBH-1625	CAB-B24HOL
FAN-300-24	24	36.00	914.40	32.00	812.80	1.68	42.72	2	FBH-1625	CAB-B24HOL
FAN-300-26A	26	38.25	971.55	34.50	876.30	1.81	46.02	2	FBH-1750	CAB-B24HOL
FAN-300-26B	26	34.12	866.65	31.62	803.15	1.44	36.63	2	FBH-1375	CAB-B24HOL
FAN-300-28A	28	40.75	1035.05	37.00	939.80	1.81	46.02	2	FBH-1750	CAB-B24HOL
FAN-300-28B	28	36.25	920.75	33.75	857.25	1.44	36.63	2	FBH-1375	CAB-B24HOL
FAN-300-30A	30	43.00	1092.20	39.25	996.95	1.94	49.33	2	FBH-1875	CAB-B24HOL
FAN-300-30B	30	39.00	990.60	36.25	920.75	1.56	39.67	2	FBH-1500	CAB-B24HOL
FAN-300-32A	32	45.25	1149.35	41.50	1054.10	2.06	52.37	2	FBH-2000	CAB-B24HOL
FAN-300-32B	32	41.50	1054.10	38.50	977.90	1.68	42.72	2	FBH-1625	CAB-B24HOL
FAN-300-34A	34	47.50	1206.50	43.50	1104.90	2.06	52.37	2	FBH-2000	CAB-B24HOL
FAN-300-34B	34	43.62	1107.95	40.62	1031.75	1.68	42.72	2	FBH-1625	CAB-B24HOL
FAN-300-36A	36	50.00	1270.00	46.00	1168.40	2.18	55.42	2	FBH-2125	CAB-B24HOL
FAN-300-36B	36	46.12	1171.45	42.88	1089.15	1.81	46.02	2	FBH-1750	CAB-B24HOL
FAN-300-38A	38	46.00	1168.40	43.00	1092.20	1.68	42.72	2	FBH-1625	CAB-B24HOL
FAN-300-38B	38	48.12	1222.25	44.88	1139.95	1.81	46.02	2	FBH-1750	CAB-B24HOL
FAN-300-40A	40	48.75	1238.25	45.50	1155.70	1.81	46.02	2	FBH-1750	CAB-B24HOL
FAN-300-40B	40	50.12	1273.05	46.88	1190.75	1.81	46.02	2	FBH-1750	CAB-B24HOL
FAN-300-42A	42	50.75	1289.05	47.50	1206.50	1.81	46.02	2	FBH-1750	CAB-B24HOL
FAN-300-42B	42	52.50	1333.50	49.00	1244.60	1.94	49.33	2	FBH-1875	CAB-B24HOL
FAN-300-44A	44	53.25	1352.55	49.75	1263.65	1.94	49.33	2	FBH-1875	CAB-B24HOL
FAN-300-44B	44	54.50	1384.30	51.00	1295.40	1.94	49.33	2	FBH-1875	CAB-B24HOL
FAN-300-46A	46	55.75	1416.05	52.00	1320.80	2.06	52.37	2	FBH-2000	CAB-B24HOL
FAN-300-46B	46	57.50	1460.50	53.75	1365.25	2.06	52.37	2	FBH-2000	CAB-B24HOL
FAN-300-48A	48	57.75	1466.85	54.00	1371.60	2.06	52.37	2	FBH-2000	CAB-B24HOL
FAN-300-48B	48	59.50	1511.30	55.75	1416.05	2.06	52.37	2	FBH-2000	CAB-B24HOL

400 Class Pressure Rating

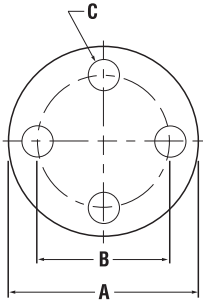
FAN-400-1/2	1/2	3.75	95.25	2.62	66.55	.68	17.32	150	FBH-625	CAB-B7SOM
FAN-400-3/4	3/4	4.62	117.35	3.25	82.55	.81	20.62	100	FBH-750	CAB-B7SOM
FAN-400-1	1	4.88	123.95	3.50	88.90	.81	20.62	100	FBH-750	CAB-B7SOM
FAN-400-1 1/4	1-1/4	5.25	133.35	3.88	98.55	.81	20.62	100	FBH-750	CAB-B7SOM
FAN-400-1 1/2	1-1/2	6.12	155.45	4.50	114.30	.94	23.93	75	FBH-875	CAB-B11SOM
FAN-400-2	2	6.50	165.10	5.00	127.00	.81	20.62	75	FBH-750	CAB-B11SOM
FAN-400-2 1/2	2-1/2	7.50	190.50	5.88	149.35	.94	23.93	50	FBH-875	CAB-B11SOM
FAN-400-3	3	8.25	209.55	6.62	168.15	.94	23.93	50	FBH-875	CAB-B11SOM
FAN-400-3 1/2	3-1/2	9.00	228.60	7.25	184.15	1.06	26.97	40	FBH-1000	CAB-B11SOM
FAN-400-4	4	10.00	254.00	7.88	200.15	1.06	26.97	35	FBH-1000	CAB-B11SOM
FAN-400-5	5	11.00	279.40	9.25	234.95	1.06	26.97	25	FBH-1000	CAB-B11SOM
FAN-400-6	6	12.50	317.50	10.62	269.75	1.06	26.97	25	FBH-1000	CAB-B11SOM
FAN-400-8	8	15.00	381.00	13.00	330.20	1.18	30.02	15	FBH-1125	CAB-B11SOM
FAN-400-10	10	17.50	444.50	15.25	387.35	1.31	33.32	10	FBH-1250	CAB-B14SOM
FAN-400-12	12	20.50	520.70	17.75	450.85	1.44	36.63	10	FBH-1375	CAB-B14SOM
FAN-400-14	14	23.00	584.20	20.25	514.35	1.44	36.63	8	FBH-1375	CAB-B14SOM
FAN-400-16	16	25.50	647.70	22.50	571.50	1.56	39.67	5	FBH-1500	CAB-B14SOM
FAN-400-18	18	28.00	711.20	24.75	628.65	1.56	39.67	5	FBH-1500	CAB-B14SOM
FAN-400-20	20	30.50	774.70	27.00	685.80	1.68	42.72	5	FBH-1625	CAB-B24HOL
FAN-402-22	20	33.00	838.20	29.25	742.95	1.81	46.02	2	FBH-1750	CAB-B24HOL
FAN-400-24	24	36.00	914.40	32.00	812.80	1.94	49.33	2	FBH-1875	CAB-B24HOL
FAN-400-26A	26	38.25	971.55	34.50	876.30	1.94	49.33	2	FBH-1875	CAB-B24HOL
FAN-400-26B	26	33.50	850.90	30.75	781.05	1.56	39.67	2	FBH-1500	CAB-B24HOL
FAN-400-28A	28	40.75	1035.05	37.00	939.80	2.06	52.37	2	FBH-2000	CAB-B24HOL
FAN-400-28B	28	36.00	914.40	33.00	838.20	1.68	42.72	2	FBH-1625	CAB-B24HOL
FAN-400-30A	30	43.00	1092.20	39.25	996.95	2.18	55.42	2	FBH-2125	CAB-B24HOL
FAN-400-30B	30	38.25	971.55	35.25	895.35	1.68	42.72	2	FBH-1625	CAB-B24HOL
FAN-400-32A	32	45.25	1149.35	41.50	1054.10	2.18	55.42	2	FBH-2125	CAB-B24HOL
FAN-400-32B	32	40.75	1035.05	37.50	952.50	1.81	46.02	2	FBH-1750	CAB-B24HOL
FAN-400-34A	34	47.50	1206.50	43.50	1104.90	2.18	55.42	2	FBH-2125	CAB-B24HOL
FAN-400-34B	34	42.75	1085.85	39.50	1003.30	1.81	46.02	2	FBH-1750	CAB-B24HOL
FAN-400-36A	36	50.00	1270.00	46.00	1168.40	2.18	55.42	2	FBH-2125	CAB-B24HOL
FAN-400-36B	36	45.50	1155.70	42.00	1066.80	1.94	49.33	2	FBH-1875	CAB-B24HOL
FAN-400-38A	38	47.50	1206.50	44.00	1117.60	1.94	49.33	2	FBH-1875	CAB-B24HOL
FAN-400-38B	38	47.50	1206.50	44.00	1117.60	1.94	49.33	2	FBH-1875	CAB-B24HOL
FAN-400-40A	40	50.00	1270.00	46.25	1174.75	2.06	52.37	2	FBH-2000	CAB-B24HOL
FAN-400-40B	40	50.00	1270.00	46.25	1174.75	2.06	52.37	2	FBH-2000	CAB-B24HOL
FAN-400-42A	42	52.00	1320.80	48.25	1225.55	2.06	52.37	2	FBH-2000	CAB-B24HOL



Flange Covers with Bolt Holes FAN Series (cont.)

Caplugs No.	Dimensions							Min Sales Quantity	Fasteners	
	Nom Pipe Size (In)	A		B		C			Matching Bolt Hole Plug	Cable Tie
		In	mm	In	mm	In	mm			
400 Class Pressure Rating (cont.)										
FAN-400-42B	42	52.00	1320.80	48.25	1225.55	2.06	52.37	2	FBH-2000	CAB-B24HOL
FAN-400-44A	44	54.50	1384.30	50.50	1282.70	2.18	55.42	2	FBH-2125	CAB-B24HOL
FAN-400-44B	44	54.50	1384.30	50.50	1282.70	2.18	55.42	2	FBH-2125	CAB-B24HOL
FAN-400-46A	46	56.75	1441.45	52.75	1339.85	2.18	55.42	2	FBH-2125	CAB-B24HOL
FAN-400-46B	46	56.75	1441.45	52.75	1339.85	2.18	55.42	2	FBH-2125	CAB-B24HOL
FAN-400-48A	48	59.50	1511.30	55.25	1403.35	2.44	62.03	2	FBH-2375	CAB-B24HOL
FAN-400-48B	48	59.50	1511.30	55.25	1403.35	2.44	62.03	2	FBH-2375	CAB-B24HOL
600 Class Pressure Rating										
FAN-600-1/2	1/2	3.75	95.25	2.62	66.55	.68	17.32	150	FBH-625	CAB-B7SOM
FAN-600-3/4	3/4	4.62	117.35	3.25	82.55	.81	20.62	100	FBH-750	CAB-B7SOM
FAN-600-1	1	4.88	123.95	3.50	88.90	.81	20.62	100	FBH-750	CAB-B7SOM
FAN-600-1 1/4	1-1/4	5.25	133.35	3.88	98.55	.81	20.62	100	FBH-750	CAB-B7SOM
FAN-600-1 1/2	1-1/2	6.12	155.45	4.50	114.30	.94	23.93	75	FBH-875	CAB-B11SOM
FAN-600-2	2	6.50	165.10	5.00	127.00	.81	20.62	75	FBH-750	CAB-B11SOM
FAN-600-2 1/2	2-1/2	7.50	190.50	5.88	149.35	.94	23.93	50	FBH-875	CAB-B11SOM
FAN-600-3	3	8.25	209.55	6.62	168.15	.94	23.93	50	FBH-875	CAB-B11SOM
FAN-600-3 1/2	3-1/2	9.00	228.60	7.25	184.15	1.06	26.97	40	FBH-1000	CAB-B11SOM
FAN-600-4	4	10.75	273.05	8.50	215.90	1.06	26.97	25	FBH-1000	CAB-B11SOM
FAN-600-5	5	13.00	330.20	10.50	266.70	1.18	30.02	20	FBH-1125	CAB-B11SOM
FAN-600-6	6	14.00	355.60	11.50	292.10	1.18	30.02	15	FBH-1125	CAB-B11SOM
FAN-600-8	8	16.50	419.10	13.75	349.25	1.31	33.32	15	FBH-1250	CAB-B11SOM
FAN-600-10	10	20.00	508.00	17.00	431.80	1.44	36.63	10	FBH-1375	CAB-B14SOM
FAN-600-12	12	22.00	558.80	19.25	488.95	1.44	36.63	8	FBH-1375	CAB-B11SOM
FAN-600-14	14	23.75	603.25	20.75	527.05	1.56	39.67	8	FBH-1500	CAB-B14SOM
FAN-600-16	16	27.00	685.80	23.75	603.25	1.68	42.72	5	FBH-1625	CAB-B14SOM
FAN-600-18	18	29.25	742.95	25.75	654.05	1.81	46.02	5	FBH-1750	CAB-B14SOM
FAN-600-20	20	32.00	812.80	28.50	723.90	1.81	46.02	4	FBH-1750	CAB-B14SOM
FAN-600-22	22	34.25	869.95	30.63	778.00	1.81	46.02	2	FBH-1750	CAB-B14SOM
FAN-600-24	24	37.00	939.80	33.00	838.20	2.06	52.37	2	FBH-2000	CAB-B24HOL
FAN-600-26A	26	40.00	1016.00	36.00	914.40	2.06	52.37	2	FBH-2000	CAB-B24HOL
FAN-600-26B	26	35.00	889.00	31.75	806.45	1.81	46.02	2	FBH-1750	CAB-B24HOL
FAN-600-28A	28	42.25	1073.15	38.00	965.20	2.18	55.42	2	FBH-2125	CAB-B24HOL
FAN-600-28B	28	37.50	952.50	34.00	863.60	1.94	49.33	2	FBH-1875	CAB-B24HOL
FAN-600-30A	30	44.50	1130.30	40.25	1022.35	2.18	55.42	2	FBH-2125	CAB-B24HOL
FAN-600-30B	30	40.25	1022.35	36.50	927.10	2.06	52.37	2	FBH-2000	CAB-B24HOL
FAN-600-32A	32	47.00	1193.80	42.50	1079.50	2.44	62.03	2	FBH-2375	CAB-B24HOL
FAN-600-32B	32	42.75	1085.85	38.75	984.25	2.18	55.42	2	FBH-2125	CAB-B24HOL
FAN-600-34A	34	49.00	1244.60	44.50	1130.30	2.44	62.03	2	FBH-2375	CAB-B24HOL
FAN-600-34B	34	45.75	1162.05	41.50	1054.10	2.44	62.03	2	FBH-2375	CAB-B24HOL
FAN-600-36A	36	51.75	1314.45	47.00	1193.80	2.68	68.12	2	FBH-2625	CAB-B24HOL
FAN-600-36B	36	47.75	1212.85	43.50	1104.90	2.44	62.03	2	FBH-2375	CAB-B24HOL
FAN-600-38A	38	50.00	1270.00	45.75	1162.05	2.44	62.03	2	FBH-2375	CAB-B24HOL
FAN-600-38B	38	50.00	1270.00	45.75	1162.05	2.44	62.03	2	FBH-2375	CAB-B24HOL
FAN-600-40A	40	52.00	1320.80	47.75	1212.85	2.44	62.03	2	FBH-2375	CAB-B24HOL
FAN-600-40B	40	52.00	1320.80	47.75	1212.85	2.44	62.03	2	FBH-2375	CAB-B24HOL
FAN-600-42A	42	55.25	1403.35	50.50	1282.70	2.68	68.12	2	FBH-2625	CAB-B24HOL
FAN-600-42B	42	55.25	1403.35	50.50	1282.70	2.68	68.12	2	FBH-2625	CAB-B24HOL
FAN-600-44A	44	57.25	1454.15	52.50	1333.50	2.68	68.12	2	FBH-2625	CAB-B24HOL
FAN-600-44B	44	57.25	1454.15	52.50	1333.50	2.68	68.12	2	FBH-2625	CAB-B24HOL
FAN-600-46A	46	59.50	1511.30	54.75	1390.65	2.68	68.12	2	FBH-2625	CAB-B24HOL
FAN-600-46B	46	59.50	1511.30	54.75	1390.65	2.68	68.12	2	FBH-2625	CAB-B24HOL
900 Class Pressure Rating										
FAN-900-1/2	1/2	4.75	120.65	3.25	82.55	.94	23.93	100	FBH-875	CAB-B11SOM
FAN-900-3/4	3/4	5.12	130.05	3.50	88.90	.94	23.93	100	FBH-875	CAB-B11SOM
FAN-900-1	1	5.88	149.35	4.00	101.60	1.06	26.97	75	FBH-1000	CAB-B11SOM
FAN-900-1 1/4	1-1/4	6.25	158.75	4.38	111.25	1.06	26.97	75	FBH-1000	CAB-B11SOM
FAN-900-1 1/2	1-1/2	7.00	177.80	4.88	123.95	1.19	30.28	50	FBH-1125	CAB-B11SOM
FAN-900-2	2	8.50	215.90	6.50	165.10	1.06	26.97	50	FBH-1000	CAB-B11SOM
FAN-900-2 1/2	2-1/2	9.62	244.35	7.50	190.50	1.19	30.28	40	FBH-1125	CAB-B11SOM
FAN-900-3	3	9.50	241.30	7.50	190.50	1.06	26.97	40	FBH-1000	CAB-B11SOM
FAN-900-4	4	11.50	292.10	9.25	234.95	1.31	33.32	25	FBH-1250	CAB-B11SOM
FAN-900-5	5	13.75	349.25	11.00	279.40	1.44	36.63	20	FBH-1375	CAB-B14SOM
FAN-900-6	6	15.00	381.00	12.50	317.50	1.31	33.32	15	FBH-1250	CAB-B14SOM
FAN-900-8	8	18.50	469.90	15.50	393.70	1.56	39.67	10	FBH-1500	CAB-B14SOM
FAN-900-10	10	21.50	546.10	18.50	469.90	1.56	39.67	8	FBH-1500	CAB-B14SOM
FAN-900-12	12	24.00	609.60	21.00	533.40	1.56	39.67	8	FBH-1500	CAB-B24HOL
FAN-900-14	14	25.25	641.35	22.00	558.80	1.69	42.98	5	FBH-1625	CAB-B24HOL
FAN-900-16	16	27.75	704.85	24.25	615.95	1.81	46.02	5	FBH-1750	CAB-B24HOL
FAN-900-18	18	31.00	787.40	27.00	685.80	2.06	52.37	5	FBH-2000	CAB-B24HOL
FAN-900-20	20	33.75	857.25	29.50	749.30	2.19	55.68	2	FBH-2125	CAB-B24HOL
FAN-900-24	24	41.00	1041.40	35.50	901.70	2.69	68.38	2	FBH-2625	CAB-B24HOL
FAN-900-26A	26	42.75	1085.85	37.50	952.50	2.94	74.73	2	FBH-2875	CAB-B24HOL
FAN-900-26B	26	40.25	1022.35	35.50	901.70	2.68	68.12	2	FBH-2625	CAB-B24HOL
FAN-900-28A	28	46.00	1168.40	40.25	1022.35	3.18	80.82	2	n/a	CAB-B24HOL
FAN-900-28B	28	43.50	1104.90	38.25	971.55	2.94	74.73	2	FBH-2875	CAB-B24HOL
FAN-900-30A	30	48.50	1231.90	42.75	1085.85	3.18	80.82	2	n/a	CAB-B36HOL
FAN-900-30B	30	46.50	1181.10	40.75	1035.05	3.18	80.82	2	n/a	CAB-B24HOL

Flange Covers with Bolt Holes FAN Series (cont.)



Caplugs No.	Dimensions							Min Sales Quantity	Fasteners	
	Nom Pipe Size (In)	A		B		C			Matching Bolt Hole Plug	Cable Tie
		In	mm	In	mm	In	mm			
900 Class Pressure Rating (cont.)										
FAN-900-32A	32	51.75	1314.45	45.50	1155.70	3.44	87.43	2	n/a	CAB-B36HOL
FAN-900-32B	32	48.75	1238.25	43.00	1092.20	3.18	80.82	2	n/a	CAB-B36HOL
FAN-900-34A	34	55.00	1397.00	48.25	1225.55	3.68	93.52	2	n/a	CAB-B36HOL
FAN-900-34B	34	51.75	1314.45	45.50	1155.70	3.44	87.43	2	n/a	CAB-B36HOL
FAN-900-36A	36	57.50	1460.50	50.75	1289.05	3.68	93.52	2	n/a	CAB-B36HOL
FAN-900-36B	36	53.00	1346.20	47.25	1200.15	3.18	80.82	2	n/a	CAB-B36HOL
FAN-900-38A	38	57.50	1460.50	50.75	1289.05	3.68	93.52	2	n/a	CAB-B36HOL
FAN-900-38B	38	57.50	1460.50	50.75	1289.05	3.68	93.52	2	n/a	CAB-B36HOL
FAN-900-40A	40	59.50	1511.30	52.75	1339.85	3.68	93.52	2	n/a	CAB-B36HOL
FAN-900-40B	40	59.50	1511.30	52.75	1339.85	3.68	93.52	2	n/a	CAB-B36HOL

1500 Class Pressure Rating

FAN-1500-1/2	1/2	4.75	120.65	3.25	82.55	.94	23.93	100	FBH-875	CAB-B11SOM
FAN-1500-3/4	3/4	5.12	130.05	3.50	88.90	.94	23.93	100	FBH-875	CAB-B11SOM
FAN-1500-1	1	5.88	149.35	4.00	101.60	1.06	26.97	75	FBH-1000	CAB-B11SOM
FAN-1500-1 1/4	1-1/4	6.25	158.75	4.38	111.25	1.06	26.97	75	FBH-1000	CAB-B11SOM
FAN-1500-1 1/2	1-1/2	7.00	177.80	4.88	123.95	1.19	30.28	50	FBH-1125	CAB-B11SOM
FAN-1500-2	2	8.50	215.90	6.50	165.10	1.06	26.97	50	FBH-1000	CAB-B11SOM
FAN-1500-2 1/2	2-1/2	9.62	244.35	7.50	190.50	1.19	30.28	40	FBH-1125	CAB-B11SOM
FAN-1500-3	3	10.50	266.70	8.00	203.20	1.31	33.32	25	FBH-1250	CAB-B14SOM
FAN-1500-4	4	12.25	311.15	9.50	241.30	1.44	36.63	25	FBH-1375	CAB-B14SOM
FAN-1500-5	5	14.75	374.65	11.50	292.10	1.69	42.98	15	FBH-1625	CAB-B24HOL
FAN-1500-6	6	15.50	393.70	12.50	317.50	1.56	39.67	15	FBH-1500	CAB-B24HOL
FAN-1500-8	8	19.00	482.60	15.50	393.70	1.81	46.02	10	FBH-1750	CAB-B24HOL
FAN-1500-10	10	23.00	584.20	19.00	482.60	2.06	52.37	8	FBH-2000	CAB-B24HOL
FAN-1500-12	12	26.50	673.10	22.50	571.50	2.19	55.68	5	FBH-2125	CAB-B24HOL
FAN-1500-14	14	29.50	749.30	25.00	635.00	2.44	62.03	5	FBH-2375	CAB-B24HOL
FAN-1500-16	16	32.50	825.50	27.75	704.85	2.69	68.38	4	FBH-2625	CAB-B24HOL
FAN-1500-18	18	36.00	914.40	30.50	774.70	2.94	74.73	2	FBH-2875	CAB-B24HOL
FAN-1500-20	20	38.75	984.25	32.75	831.85	3.19	81.08	2	n/a	CAB-B36HOL
FAN-1500-24	24	46.00	1168.40	39.00	990.60	3.69	93.78	2	n/a	CAB-B36HOL

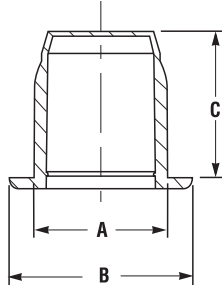
2500 Class Pressure Rating

FAN-2500-1/2	1/2	5.25	133.35	3.50	88.90	.94	23.93	100	FBH-875	CAB-B11SOM
FAN-2500-3/4	3/4	5.50	139.70	3.75	95.25	.94	23.93	75	FBH-875	CAB-B11SOM
FAN-2500-1	1	6.25	158.75	4.25	107.95	1.06	26.97	75	FBH-1000	CAB-B11SOM
FAN-2500-1 1/4	1-1/4	7.25	184.15	5.13	130.30	1.19	30.28	50	FBH-1125	CAB-B11SOM
FAN-2500-1 1/2	1-1/2	8.00	203.20	5.75	146.05	1.31	33.32	50	FBH-1250	CAB-B11SOM
FAN-2500-2	2	9.25	234.95	6.75	171.45	1.19	30.28	40	FBH-1125	CAB-B14SOM
FAN-2500-2 1/2	2-1/2	10.50	266.70	7.75	196.85	1.31	33.32	25	FBH-1250	CAB-B14SOM
FAN-2500-3	3	12.00	304.80	9.00	228.60	1.44	36.63	25	FBH-1375	CAB-B14SOM
FAN-2500-4	4	14.00	355.60	10.75	273.05	1.69	42.98	15	FBH-1625	CAB-B24HOL
FAN-2500-5	5	16.50	419.10	12.75	323.85	1.94	49.33	15	FBH-1875	CAB-B24HOL
FAN-2500-6	6	19.00	482.60	14.50	368.30	2.19	55.68	10	FBH-2125	CAB-B24HOL
FAN-2500-8	8	21.75	552.45	17.25	438.15	2.19	55.68	8	FBH-2125	CAB-B24HOL
FAN-2500-10	10	26.50	673.10	21.25	539.75	2.69	68.38	5	FBH-2625	CAB-B24HOL
FAN-2500-12	12	30.00	762.00	24.38	619.25	2.94	74.73	5	FBH-2875	CAB-B36HOL



Bolt Hole Plugs FBH Series

Securely fastens FAN Series onto flange. Outer ribs accommodate various hole diameter tolerances and a thick flange allows easy removal.



Material: High-Density Polyethylene Color: Black

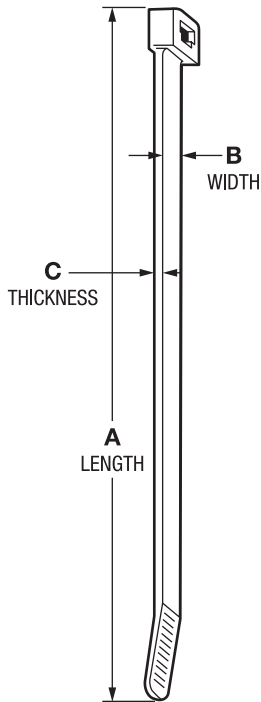
Caplugs No.	Bolt Hole Size	Dimensions						Packaging		Used With
		A		B		C		Carton Quantity	Mini Pak Quantity	
		In	mm	In	mm	In	mm			
FBH-625	5/8	.635	16.13	1.03	26.16	.44	11.18	800	160	FAN-150-1/2, 150-3/4, 150-1, 150-1-1/4, 150-1-1/2, 300-1/2, 600-1/2
FBH-750	3/4	.761	19.33	1.12	28.45	.75	19.05	800	160	FAN-150-2, 150-2-1/2, 150-3, 150-3-1/2, 300-3/4, 300-1, 300-1-1/4, 300-2, 600-3/4, 600-1, 600-1-1/4, 600-2
FBH-875	7/8	.888	22.56	1.28	32.51	.94	23.88	800	160	FAN-150-4, 150-5, 150-6, 150-8, 300-1-1/2, 300-2-1/2, 300-3, 300-3-1/2, 300-4, 300-5, 300-6, 600-1-1/2, 600-3, 900-1/2, 900-3/4
FBH-1000	1	1.020	25.91	1.43	36.32	1.19	30.23	800	160	FAN-150-10, 150-12, 300-8, 600-3-1/2, 600-4, 900-1, 900-1-1/4, 900-2, 900-3
FBH-1125	1-1/8	1.142	29.01	1.56	39.62	1.25	31.75	600	120	FAN-150-14, 150-16, 300-10, 600-5, 600-6, 900-1-1/2, 900-2-1/2
FBH-1250	1-1/4	1.269	32.23	1.68	42.67	1.25	31.75	600	120	FAN-150-18, 150-20, 300-12, 300-14, 600-8, 900-4, 900-6
FBH-1375	1-3/8	1.396	35.46	1.78	45.21	1.25	31.75	600	120	FAN-300-16, 300-18, 600-10, 600-12, 900-5
FBH-1500	1-1/2	1.530	38.86	1.93	49.02	1.25	31.75	400	80	FAN-600-14, 900-8, 900-10, 900-12
FBH-1625	1-5/8	1.650	41.91	2.03	51.56	1.25	31.75	400	80	FAN-600-16, 900-14
FBH-1750	1-7/8	1.775	45.07	2.18	55.35	1.25	31.74	500	100	FAN-300-26A, 300-28A, 300-38B, 300-40A, 300-40B, 300-42A, 400-22, 400-32B, 400-34B, 600-22, 600-26B
FBH-1875	1-8/9	1.902	48.29	2.31	58.65	1.25	31.74	400	80	FAN-300-42B, 300-44A, 300-44B, 400-24, 400-26A, 400-36B, 400-38A, 400-38B, 600-28B, 2500-5
FBH-2000	2	2.040	51.80	2.43	61.70	1.25	31.74	400	80	FAN-300-32A, 300-34A, 300-46A, 300-46B, 300-48A, 300-48B, 400-28A, 400-40A, 400-40B, 400-42A, 400-42B, 600-24, 600-26A, 600-30B, 900-18
FBH-2125	2-1/6	2.156	54.74	2.56	65.00	1.62	41.13	300	60	FAN-400-30A, 400-32A, 400-34A, 400-36A, 400-44A, 400-44B, 400-46A, 400-46B, 600-28A, 600-30A, 600-32B, 2500-6, 2500-8
FBH-2375	2-2/5	2.410	61.19	2.81	71.35	1.62	41.13	300	60	FAN-400-48A, 400-48B, 600-32A, 600-34A, 600-34B, 600-36B, 600-38A, 600-38B, 600-40A, 600-40B, 1500-14
FBH-2625	2-2/3	2.664	67.64	3.09	78.46	1.62	41.13	200	40	FAN-600-36A, 600-42A, 600-42B, 600-44A, 600-44B, 600-46A, 600-46B, 900-24, 900-26B, 1500-16, 2500-10
FBH-2875	2-8/9	2.918	74.09	3.31	84.04	1.62	41.13	200	40	FAN-900-26A, 900-28A, 1500-18, 2500-12

Cable Ties CAB Series

Can be used with FAN Series through bolt holes. Designed from durable 6/6 nylon in a variety of lengths and strengths.



Material: Nylon Color: Natural, UV Black



Cablugs No.	Color	Dimensions										Packaging
		A		B		C		Tensile Strength		Max Bundle Diameter		Quantity / Bag
		In	mm	In	mm	In	mm	lbs	kg	In	mm	
CAB-B4M9M	Natural	4.10	104.10	.10	2.54	.04	1.02	18	39.71	.62	15.74	1000
CAB-B4M0M	UV Black	4.10	104.10	.10	2.54	.04	1.02	18	39.71	.62	15.74	1000
CAB-B6M9M	Natural	6.10	154.88	.10	2.54	.04	1.02	18	39.71	1.25	31.74	1000
CAB-B6M0M	UV Black	6.10	154.88	.10	2.54	.04	1.02	18	39.71	1.25	31.74	1000
CAB-B8M9M	Natural	8.10	205.66	.10	2.54	.04	1.02	18	39.71	2.00	50.78	1000
CAB-B8M0M	UV Black	8.10	205.66	.10	2.54	.04	1.02	18	39.71	2.00	50.78	1000
CAB-B519M	Natural	5.70	144.72	.14	3.55	.05	1.27	40	88.24	1.25	31.74	1000
CAB-B510M	UV Black	5.70	144.72	.14	3.55	.05	1.27	40	88.24	1.25	31.74	1000
CAB-B819M	Natural	8.20	208.20	.14	3.55	.05	1.27	40	88.24	2.00	50.78	1000
CAB-B810M	UV Black	8.20	208.20	.14	3.55	.05	1.27	40	88.24	2.00	50.78	1000
CAB-B7S9M	Natural	8.00	203.12	.19	4.82	.05	1.27	50	110.30	2.00	50.78	1000
CAB-B7S0M	UV Black	8.00	203.12	.19	4.82	.05	1.27	50	110.30	2.00	50.78	1000
CAB-B11S9M	Natural	11.80	299.60	.19	4.82	.05	1.27	50	110.30	3.00	76.17	1000
CAB-B11S0M	UV Black	11.80	299.60	.19	4.82	.05	1.27	50	110.30	3.00	76.17	1000
CAB-B14S9M	Natural	14.80	375.77	.19	4.82	.05	1.27	50	110.30	4.00	101.56	1000
CAB-B14S0M	UV Black	14.80	375.77	.19	4.82	.05	1.27	50	110.30	4.00	101.56	1000
CAB-B8L9C	Natural	9.00	228.51	.30	7.62	.08	2.03	120	264.72	2.00	50.78	100
CAB-B8L0C	UV Black	9.00	228.51	.30	7.62	.08	2.03	120	264.72	2.00	50.78	100
CAB-B11L9C	Natural	12.10	307.22	.30	7.62	.08	2.03	120	264.72	3.00	76.17	100
CAB-B11L0C	UV Black	12.10	307.22	.30	7.62	.08	2.03	120	264.72	3.00	76.17	100
CAB-B14L9C	Natural	15.00	380.85	.30	7.62	.08	2.03	120	264.72	4.00	101.56	100
CAB-B14L0C	UV Black	15.00	380.85	.30	7.62	.08	2.03	120	264.72	4.00	101.56	100
CAB-B24H9L	Natural	25.20	639.83	.35	8.89	.08	2.03	175	386.05	7.00	177.73	50
CAB-B24H0L	UV Black	25.20	639.83	.35	8.89	.08	2.03	175	386.05	7.00	177.73	50
CAB-B36H9L	Natural	36.50	926.74	.35	8.89	.08	2.03	175	386.05	10.70	271.67	50
CAB-B36H0L	UV Black	36.50	926.74	.35	8.89	.08	2.03	175	386.05	10.70	271.67	50
CAB-B48H9L	Natural	48.00	1218.72	.35	8.89	.08	2.03	175	386.05	15.00	380.85	50
CAB-B48H0L	UV Black	48.00	1218.72	.35	8.89	.08	2.03	175	386.05	15.00	380.85	50



CAB-200TT Tensioning tool for use with 18 lb. through 50 lb. cable ties

CAB-300TT Tensioning tool for use with 120 lb. through 175 lb. cable ties

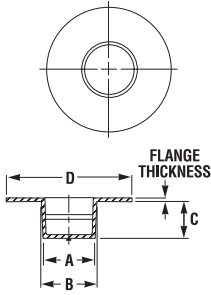


Valve Flange Protectors FLGV Series

Engineered with a tapered body and wide flange to protect entire machined surface from dirt or contaminants. Protectors only fit 40 flange bore for a schedule 40 pipe. Doubles as paint mask.



Material: Low-Density Polyethylene Color: Orange



Caplugs No.	Nominal Size	Flange Thickness	Dimensions				Packaging	
			A	B	C	D	Carton Quantity	Mini Pak Quantity
	In	In	In	In	In	In		
FLGV-109	1/2	.25	.540	.585	.500	1.440	4000	800
FLGV-110	3/4	.03	.720	.750	.500	1.688	2500	500
FLGV-111	1	.03	.940	.970	.625	2.000	800	160
FLGV-112	1-1/4	.04	1.360	1.400	.625	3.560	500	100
FLGV-113	1-1/2	.04	1.600	1.640	.750	2.875	500	100
FLGV-114	2	.05	2.040	2.100	.750	3.625	250	50
FLGV-115	2-1/2	.05	2.440	2.500	.750	4.125	250	50
FLGV-115-1	2-1/2	.05	2.440	2.500	.750	5.125	700	140
FLGV-116	3	.05	3.014	3.150	.730	6.050	400	80
FLGV-117	3-1/2	.06	3.520	3.580	.750	5.590	450	90
FLGV-118	4	.06	4.000	4.140	.980	6.310	250	50
FLGV-119	5	.06	5.020	5.080	1.000	7.312	200	40
FLGV-120	6	.06	6.040	6.100	1.000	8.500	150	30

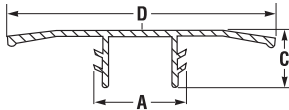


Push-In Protectors EPN-305 Series

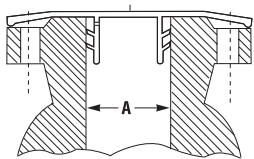
Universal design allows use on a variety of flanges and classifications.



Material: Linear Low-Density Polyethylene Color: Yellow



Caplugs No.	Nominal Size	Dimensions						Packaging	
		A		C		D		Carton Quantity	Mini Pak Quantity
	In	In	mm	In	mm	In	mm		
EPN-305-0375	3/8	.55	13.97	.79	20.07	3.39	86.11	1000	n/a
EPN-305-0500	1/2	.75	19.05	.79	20.07	3.54	89.92	1000	n/a
EPN-305-0750	3/4	.94	23.88	.79	20.07	3.94	100.08	700	n/a
EPN-305-1	1	1.18	29.97	.79	20.07	4.33	109.98	500	n/a
EPN-305-1250	1-1/4	1.54	39.12	.79	20.07	5.35	135.89	300	n/a
EPN-305-1500	1-1/2	1.77	44.96	.79	20.07	5.75	146.05	250	n/a
EPN-305-2	2	2.20	55.88	.79	20.07	6.30	160.02	200	n/a
EPN-305-2500	2-1/2	2.83	71.88	.79	20.07	7.09	180.09	200	n/a
EPN-305-3	3	3.35	85.09	.98	24.89	7.72	196.09	150	n/a
EPN-305-4	4	4.29	108.97	.98	24.89	8.50	215.90	100	n/a
EPN-305-5	5	5.28	134.11	.98	24.89	9.69	246.13	75	n/a
EPN-305-6	6	6.34	161.04	1.38	35.05	11.02	279.91	40	n/a
EPN-305-8	8	8.27	210.06	1.38	35.05	13.23	336.04	40	n/a
EPN-305-10	10	10.31	261.87	1.57	39.88	15.35	389.89	28	n/a
EPN-305-12	12	12.52	318.01	1.89	48.01	17.72	450.09	20	n/a
EPN-305-16	16	16.14	409.96	2.44	61.98	22.83	579.88	10	n/a



Caplugs No.	Nominal Size	A				ANSI B 16.5/BS 1560					DIN 2627-2638/BS 4504								
		Minimum		Maximum		Cl. 150-300	Cl. 400	Cl. 600	Cl. 900	Cl. 1500	Cl. 2500	PN 10-16	PN 25-40	PN 64	PN 100	PN 160	PN 250	PN 300	PN-400
		In	In	mm	In														
EPN-305-0375	3/8	.35	8.89	.54	13.72	X	X	X	X	X	X	X	X	X	X	X	X	X	X
EPN-305-0500	1/2	.52	13.21	.68	17.27	X	X	X	X	X	X	X	X	X	X	X	X	X	X
EPN-305-0750	3/4	.77	19.56	.88	22.35	X	X	X	X	X	X	X	X	X	X	X	X	X	X
EPN-305-1	1	.95	24.13	1.12	28.45	X	X	X	X	X	X	X	X	X	X	X	X	X	X
EPN-305-1250	1-1/4	1.18	29.97	1.46	37.08	X	X	X	X	X	X	X	X	X	X	X	X	X	X
EPN-305-1500	1-1/2	1.49	37.85	1.70	43.18	X	X	X	X	X	X	X	X	X	X	X	X	X	X
EPN-305-2	2	1.89	48.01	2.15	54.61	X	X	X	X		X	X	X	X	X	X	X	X	X
EPN-305-2500	2-1/2	2.50	63.50	2.77	70.36	X	X	X	X		X	X	X	X	X	X	X	X	X
EPN-305-3	3	2.99	75.95	3.25	82.55	X	X	X	X		X	X	X	X	X	X	X	X	X
EPN-305-4	4	3.82	97.03	4.22	107.19	X	X				X	X	X	X	X	X	X	X	X
EPN-305-5	5	4.65	118.11	5.19	131.83	X	X				X	X	X	X	X	X	X	X	X
EPN-305-6	6	5.83	148.08	6.26	159.00	X	X				X	X	X	X	X	X	X	X	X
EPN-305-8	8	7.24	183.90	8.19	208.03	X	X				X	X	X	X	X	X	X	X	X
EPN-305-10	10	9.37	238.00	10.25	260.35	X	X				X	X	X	X	X	X	X	X	X
EPN-305-12	12	11.22	284.99	12.40	314.96	X	X				X	X	X	X	X	X	X	X	X
EPN-305-16	16	13.98	355.09	16.06	407.92	X	X				X	X	X	X	X	X	X	X	X

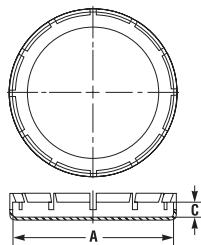


Outside Fitting Protectors EPN-310 Series

Pushes on to cover the entire flange and protect the face and sides. Ideal for coated and conical bore flanges.



Material: Linear Low-Density Polyethylene Color: Yellow



Caplugs No.	To Cover Flange Sizes (In)	Dimensions				Packaging	
		A		C		Carton Quantity	Mini Pak Quantity
		In	mm	In	mm		
EPN-310-0500A	150-1/2	3.50	88.90	.56	14.22	250	n/a
EPN-310-0750A	150-3/4	3.88	98.55	.62	15.75	200	n/a
EPN-310-1A	150-1	4.25	107.95	.69	17.53	150	n/a
EPN-310-1500A	150-1-1/2	5.00	127.00	.81	20.57	175	n/a
EPN-310-2A	150-2	6.00	152.40	.87	22.10	100	n/a
EPN-310-3A	150-3	7.50	190.50	1.06	26.92	60	n/a
EPN-310-4A	150-4	9.00	228.60	1.10	27.94	40	n/a
EPN-310-6A	150-6	11.00	279.40	1.14	28.96	25	n/a
EPN-310-10A	150-10	16.00	406.40	1.18	29.97	20	n/a
EPN-310-0500B	300-1/2	3.74	95.00	.67	17.02	200	n/a
EPN-310-1B	300-1	4.88	123.95	.81	20.57	175	n/a
EPN-310-2B	300-2	6.50	165.10	.83	21.08	100	n/a
EPN-310-0500C	600-1/2	3.74	95.00	.67	17.02	200	n/a
EPN-310-1C	600-1	4.88	123.95	.81	20.57	175	n/a

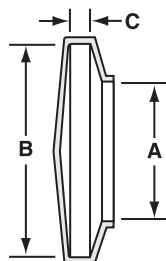


Vinyl ASA Flange Covers VAS Series

Accommodates most American Standard Association, Navy and Military sizes. Seals from dust and moisture during shipment.



Material: Vinyl Color: Yellow Optional Colors: White, Black, Brown, Orange, Red, Green, Gray, Blue



Caplugs No.	Dimensions						Packaging	
	A		B		C		Carton Quantity	Mini Pak [†] Quantity
	In	mm	In	mm	In	mm		
VAS-3500-6	2.485	63.12	3.500	88.90	.400	10.16	250	50
VAS-3750-8	2.750	69.85	3.750	95.25	.500	12.70	200	40
VAS-3870-8	2.860	72.64	3.870	98.30	.540	13.72	200	40
VAS-4250-7	3.260	82.80	4.250	107.95	.460	11.68	200	40
VAS-4620-9	3.620	91.95	4.620	117.35	.500	12.70	100	20
VAS-4870-10	3.900	99.06	4.870	123.70	.680	17.27	100	20
VAS-5000-9	4.000	101.60	5.000	127.00	.620	15.75	100	20
VAS-5250-12	4.250	107.95	5.250	133.35	.760	19.30	100	20
VAS-6000-10	4.500	114.30	6.000	152.40	.675	17.15	100	20
VAS-6120-13	5.110	129.79	6.120	155.45	.825	20.96	100	20
VAS-6500-14	5.500	139.70	6.500	165.10	.900	22.86	80	n/a
VAS-7000-12	6.000	152.40	7.000	177.80	.800	20.32	70	n/a
VAS-7500-14	6.500	165.10	7.500	190.50	.900	22.86	60	n/a
VAS-8250-19	7.200	182.88	8.250	209.55	1.300	33.02	20	n/a
VAS-9000-15	8.030	203.96	9.000	228.60	1.000	25.40	20	n/a
VAS-10000-14	9.000	228.60	10.030	254.76	.875	22.23	20	n/a
VAS-10750-24	9.730	247.14	10.750	273.05	1.500	38.10	20	n/a
VAS-11000-16	10.050	255.27	11.000	279.40	1.000	25.40	20	n/a
VAS-12500-22	11.500	292.10	12.500	317.50	1.440	36.58	20	n/a

[†] Mini Paks available in standard color only

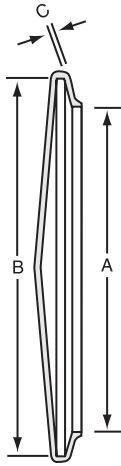


Vinyl Flange Covers VF Series

Quick, easy to apply and provides a snug fit for flanged and beaded tubes.



Material: Vinyl **Color:** Yellow **Optional Colors:** White, Black, Brown, Orange, Red, Green, Gray, Blue



Caplugs No.	Dimensions						Packaging	
	A		B		C		Carton Quantity	Mini Pak [†] Quantity
	In	mm	In	mm	In	mm		
VF-680	.680	17.27	1.310	33.27	.055	1.40	2000	400
VF-930	.930	23.62	1.550	39.37	.055	1.40	1500	300
VF-1000	1.000	25.40	1.620	41.14	.055	1.40	1500	300
VF-1310	1.310	33.27	1.930	49.02	.055	1.40	1000	200
VF-1500	1.500	38.10	2.195	55.75	.055	1.40	900	180
VF-2000	2.000	50.80	2.695	68.45	.055	1.40	600	120
VF-2180	2.180	55.37	2.860	72.64	.055	1.40	500	100
VF-2500	2.500	63.50	3.180	80.77	.055	1.40	400	80
VF-2930	2.930	74.42	3.560	90.42	.055	1.40	400	80
VF-3000	3.000	76.20	3.600	91.44	.055	1.40	400	80
VF-3500	3.500	88.90	4.155	105.53	.055	1.40	300	60
VF-4000	4.000	101.60	4.690	119.12	.055	1.40	250	50
VF-4250	4.250	107.95	4.940	125.47	.055	1.40	200	40
VF-4500	4.500	114.30	5.190	131.82	.055	1.40	200	40
VF-4750	4.750	120.65	5.440	138.17	.055	1.40	200	40
VF-5000	5.000	127.00	5.690	144.52	.055	1.40	100	20
VF-5250	5.250	133.35	5.940	150.87	.055	1.40	100	20
VF-5500	5.500	139.70	6.190	157.22	.055	1.40	100	20
VF-6000	6.000	152.40	6.690	169.92	.055	1.40	100	20
VF-6500	6.500	165.10	7.190	182.62	.055	1.40	100	20

[†] Mini Paks available in standard color only

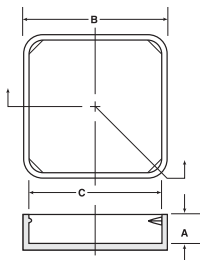


Caps for Flanged and Flange Mounted Fittings FF Series

Available in square, hexagonal and triangular shapes. Used for a variety of flanged and flange-mounted fittings to protect surfaces and keep assemblies intact when provided with slip-on flanges.



Material: Low-Density Polyethylene **Color:** Red



Caplugs No.	Shape	To Fit	Dimensions						Packaging	
			A		B		C		Carton Quantity	Mini Pak Quantity
			In	mm	In	mm	In	mm		
FF-26	Square	AN-756-12	.37	9.39	1.68	42.67	1.62	41.14	1000	200
FF-28	Square	AN-756-16	.36	9.14	1.84	46.73	1.78	45.21	1000	200
FF-32	Square	-	.34	8.63	2.11	53.59	2.05	52.07	1000	200
FF-35	Square	AN-756-20	.37	9.39	2.28	57.91	2.22	56.38	500	100
FF-38	Square	AN-756-24	.41	10.41	2.49	63.24	2.40	60.96	500	100
FF-41	Square	MS-9244-32	.44	11.17	2.65	67.31	2.59	65.78	500	100
FF-48	Square	AN-756-32	.42	10.66	3.09	78.48	3.03	76.96	500	100
FF-39	Triangle	MS-9233-24	.44	11.17	-	-	-	-	500	100
FF-64	Hex	AN-756-40	.43	10.92	-	-	-	-	250	50
FF-72	Hex	AN-756-48	.43	10.92	-	-	-	-	250	50

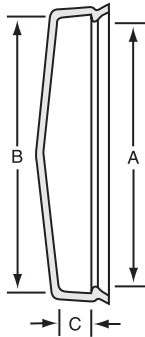


Vinyl Snap Ring Flange Covers VSR Series

Designed to snap on tightly to seal flange during shipment.

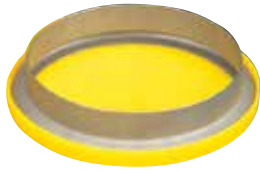


Material: Vinyl Color: Yellow Optional Colors: White, Black, Brown, Orange, Red, Green, Gray, Blue



Caplugs No.	Dimensions						Packaging	
	A		B		C		Carton Quantity	Mini Pak† Quantity
	In	mm	In	mm	In	mm		
VSR-1000	.870	22.10	1.000	25.40	.375	9.53	1000	200
VSR-1150	1.050	26.67	1.150	29.21	.505	12.83	1000	200
VSR-1250	1.150	29.21	1.250	31.75	.505	12.83	1000	200
VSR-1500	1.450	36.83	1.550	39.37	.430	10.92	1000	200
VSR-1650	1.650	41.91	1.800	45.72	.505	12.83	1000	200
VSR-1750	1.700	43.18	1.800	45.72	.450	11.43	1000	200
VSR-2000	1.950	49.53	2.050	52.07	.450	11.43	1000	200
VSR-2150	2.050	52.07	2.150	54.61	.500	12.70	500	100
VSR-2250	2.150	54.61	2.280	57.91	.450	11.43	500	100
VSR-2500	2.400	60.96	2.620	66.55	.450	11.43	500	100
VSR-2750	2.650	67.31	2.800	71.12	.450	11.43	500	100
VSR-3000	2.850	72.39	3.050	77.47	.450	11.43	250	n/a
VSR-3250	3.150	80.01	3.300	83.82	.450	11.43	250	n/a
VSR-3500	3.400	86.36	3.600	91.44	.450	11.43	250	n/a
VSR-3750	3.650	92.71	3.850	97.79	.500	12.70	250	n/a
VSR-4000	3.900	99.06	4.080	103.63	.500	12.70	250	n/a
VSR-4250	4.150	105.41	4.320	109.73	.550	13.97	250	50
VSR-4500	4.400	111.76	4.600	116.84	.550	13.97	250	n/a
VSR-4750	4.650	118.11	4.850	123.19	.500	12.70	250	n/a
VSR-5000	4.900	124.46	5.100	129.54	.600	15.24	200	n/a
VSR-5250	5.150	130.81	5.350	135.89	.600	15.24	200	n/a
VSR-5500	5.400	137.16	5.620	142.75	.600	15.24	150	n/a
VSR-5750	5.700	144.78	5.850	148.59	.600	15.24	150	n/a
VSR-6000	5.900	149.86	6.180	156.97	.600	15.24	150	n/a
VSR-6250	6.180	156.97	6.400	162.56	.600	15.24	150	n/a
VSR-6500	6.450	163.83	6.650	168.91	.600	15.24	100	n/a
VSR-6750	6.700	170.18	6.900	175.26	.600	15.24	100	n/a
VSR-7000	6.950	176.53	7.150	181.61	.600	15.24	100	n/a
VSR-7250	7.200	182.88	7.400	187.96	.600	15.24	100	n/a
VSR-7500	7.450	189.23	7.650	194.31	.600	15.24	100	n/a
VSR-7750	7.700	195.58	7.900	200.66	.600	15.24	75	n/a
VSR-8000	7.950	201.93	8.150	207.01	.600	15.24	75	n/a
VSR-8250	8.250	209.55	8.450	214.63	.600	15.24	75	n/a
VSR-8500	8.450	214.63	8.700	220.98	.600	15.24	75	n/a
VSR-8750	8.600	218.44	8.800	223.52	.600	15.24	75	n/a
VSR-9000	8.800	223.52	9.000	228.60	.620	15.75	75	n/a
VSR-9500	9.350	237.49	9.550	242.57	.600	15.24	50	n/a
VSR-9750	9.700	246.38	10.050	255.27	.600	15.24	50	n/a
VSR-10000	9.900	251.46	10.050	255.27	.600	15.24	50	n/a
VSR-10250	10.100	256.54	10.300	261.62	.600	15.24	40	n/a
VSR-10500	10.400	264.16	10.650	270.51	.600	15.24	30	n/a
VSR-11000	10.900	276.86	11.050	280.67	.600	15.24	30	n/a
VSR-11420	11.100	281.94	11.420	290.07	.500	12.70	30	n/a
VSR-12000	11.800	299.72	12.000	304.80	.650	16.51	30	n/a
VSR-12250	12.150	308.61	12.350	313.69	.650	16.51	20	n/a
VSR-13500	13.500	342.90	13.750	349.25	.650	16.51	20	n/a
VSR-14500	14.500	368.30	14.750	374.65	.650	16.51	10	n/a

† Mini Paks available in standard color only

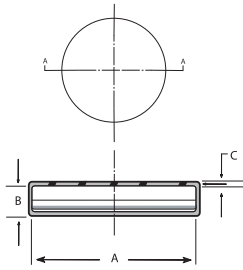


Flange Covers CC Series

Covers standard and low profile sheet metal or machined flanges to prevent damage during maintenance, repair or new construction.



Material: Low-Density Polyethylene **Color:** Yellow



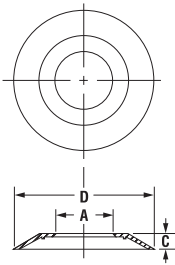
Caplugs No.	Dimensions						Packaging	
	A		B		C		Carton Quantity	Mini Pak Quantity
	In	mm	In	mm	In	mm		
CC-1	1.545	39.24	.34	8.64	.031	.79	2500	500
CC-1-1/4	1.872	47.54	.34	8.64	.031	.79	2500	500
CC-1-1/2	2.122	53.89	.34	8.64	.031	.79	2500	500
CC-1-3/4	2.372	60.24	.34	8.64	.031	.79	1000	200
CC-2	2.622	66.59	.34	8.64	.031	.79	1000	200
CC-2-1/4	2.886	73.30	.34	8.64	.031	.79	1000	200
CC-2-1/2	3.136	79.65	.34	8.64	.031	.79	1000	200
CC-2-3/4	3.386	86.00	.34	8.64	.035	.88	1000	200
CC-3	3.636	92.35	.34	8.64	.035	.88	500	100
CC-3-1/4	3.886	98.70	.34	8.64	.035	.88	500	100
CC-3-1/2	4.141	105.18	.34	8.64	.035	.88	500	100
CC-3-3/4	4.391	111.53	.34	8.64	.040	1.01	500	100
CC-4	4.641	117.88	.34	8.64	.040	1.01	500	100
CC-4-1/2	5.141	130.58	.34	8.64	.040	1.01	250	50
CC-5	5.641	143.28	.34	8.64	.040	1.01	250	50
CC-5-1/4	5.891	149.63	.34	8.64	.040	1.01	250	50
CC-5-1/2	6.141	155.98	.34	8.64	.045	1.14	250	50
CC-6	6.656	169.06	.34	8.64	.045	1.14	200	40
CC-6-1/4	6.906	175.41	.34	8.64	.045	1.14	200	40
CC-6-1/2	7.156	181.76	.34	8.64	.045	1.14	200	40
CC-7	7.656	194.46	.34	8.64	.045	1.14	100	20
CC-9	9.656	245.26	.34	8.64	.055	1.40	150	30

Finishing Flanges - Non-Corroding FN Series

Durable, non-corroding finishing flanges ensure long-lasting appearance. Economical replacement for metal flanges.



Material: Linear Low-Density Polyethylene **Color:** White



Caplugs No.	Common Uses	Dimensions						Packaging
		A		C		D		Carton Quantity
		In	mm	In	mm	In	mm	
FN-179-1	Fits 1/4 Pipe	0.531	13.49	0.2	5.08	2.12	53.85	3000
FN-179-7	Fits 1/4 Pipe	0.625	15.88	0.2	5.08	2.12	53.85	3000
FN-179-3	Fits 1/2 Pipe	0.812	20.62	0.2	5.08	2.12	53.85	3000
FN-180	Fits 3/4 Pipe	1	25.4	0.44	11.18	2.88	73.15	2000
FN-182	Fits 3/4 Pipe	1	25.4	0.31	7.87	3.25	82.55	1000
FN-186	Fits 3/4 Pipe	1	25.4	0.38	9.65	2.38	60.45	2500
FN-177	Fits 3/4 Pipe	1.025	26.04	0.28	7.11	2.5	63.5	2500
FN-182-3	Fits 1 Pipe	1.312	33.32	0.31	7.87	3.25	82.55	1000
FN-182-6	Fits 1 Pipe	1.531	38.89	0.31	7.87	3.25	82.55	1000
FN-182-2	Fits 1-1/4 Pipe	1.625	41.28	0.31	7.87	3.25	82.55	1000
FN-182-7	Fits 1-1/2 Pipe	1.89	48.01	0.31	7.87	3.25	82.55	1000
FN-187-2	Fits 2 Pipe	2.312	58.72	0.31	7.87	3.5	88.9	1000
FN-187	Fits 2 O.D. Tube	2	50.8	0.31	7.87	3.5	88.9	1000

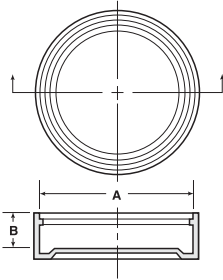


Caps for Split-Flange Connections SF Series

Protects four-bolt split-flange connections. Pushes on with an internal bead for a positive locking grip. Manufactured with natural, translucent polyethylene. O-ring remains visible after closure is applied.



Material: Low-Density Polyethylene **Color:** Natural



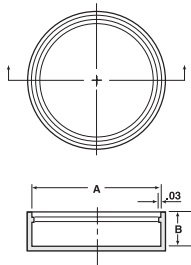
Caplugs No.	To Cap Nominal Flange Size (In)	To Cap Ferrule Size (In)	Dimensions				Packaging	
			A		B		Carton Quantity	Mini Pak Quantity
			In	mm	In	mm		
SF-7	-	1/2, 3/4	1.02	25.91	0.34	8.64	5000	1000
SF-CC-8	-	-	1.19	30.23	0.39	9.91	3000	600
SF-10	5/8	-	1.35	34.29	0.39	9.91	2500	500
SF-12	3/4	-	1.50	38.10	0.39	9.91	2500	500
SF-16	1	-	1.75	44.45	0.41	10.41	2500	500
SF-20	1-1/4	1, 1-1/2	2.00	50.80	0.44	11.18	1000	200
SF-24	1-1/2	-	2.38	60.45	0.44	11.18	1000	200
SF-28	-	2	2.53	64.26	0.32	8.13	1000	200
SF-32	2	-	2.81	71.38	0.50	12.70	1000	200
SF-36	-	2-1/2	3.06	77.72	0.32	8.13	900	180
SF-CC-40	2-1/2	-	3.31	84.08	0.50	12.70	500	100
SF-44	-	3	3.59	91.19	0.32	8.13	600	120
SF-48	3	-	4.00	101.60	0.50	12.70	500	100
SF-64	-	4	4.68	118.87	0.34	8.64	400	80

High-Pressure Split-Flange Covers HSF Series

Designed with translucent low-density polyethylene to protect four-bolt split-flange connections. Attaches easily with an internal bead that provides a positive locking grip. O-ring remains clearly discernible.



Material: Low-Density Polyethylene **Color:** Natural



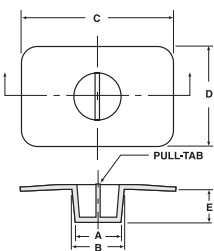
Caplugs No.	To Cap Nominal Flange Size (In)	Dimensions				Packaging	
		A		B		Carton Quantity	Mini Pak Quantity
		In	mm	In	mm		
HSF-8	1/2	1.28	32.51	.51	12.95	3000	600
HSF-12	3/4	1.66	42.16	.55	13.97	2000	400
HSF-16	1	1.91	48.51	.58	14.73	1000	200
HSF-20	1-1/4	2.16	54.86	.61	15.49	1000	200
HSF-24	1-1/2	2.53	64.26	.70	17.78	800	160
HSF-32	2	3.16	80.26	.70	17.78	500	100
HSF-44	n/a	2.79	70.90	.48	12.20	500	100

Covers for Split-Flange Connections SFP Series

For use on SAE 3000 lb., four-bolt split hydraulic flanges. Protects port and flange surface by fitting securely into opening.



Material: Low-Density Polyethylene **Color:** Red

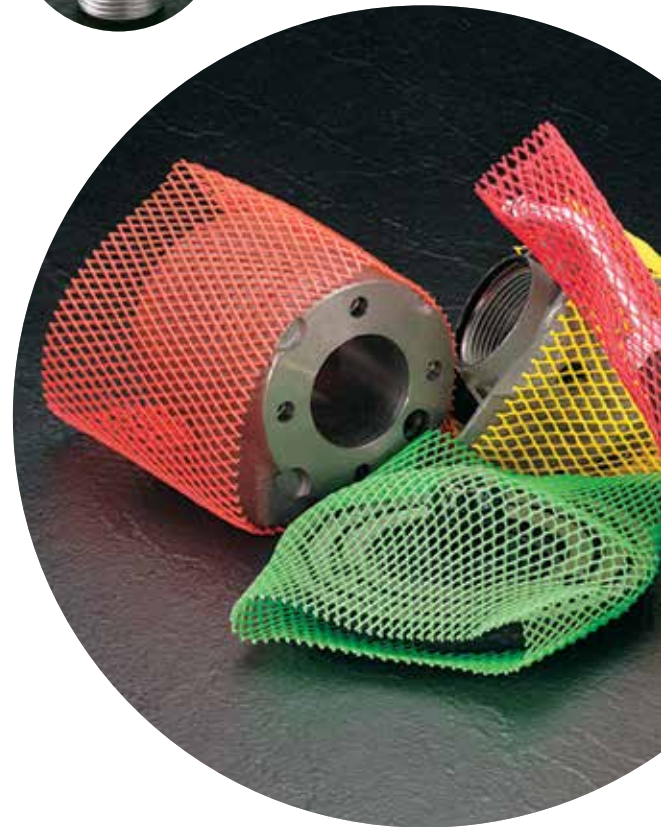


Caplugs No.	To Cover Flange Dash Size (In)	To Fit Dim Flange Size (In)	Dimensions										Packaging	
			A		B		C		D		E		Carton Quantity	Mini Pak Quantity
			In	mm	In	mm	In	mm	In	mm	In	mm		
SFP-12	-12	3/4	.73	18.54	.79	20.07	2.56	65.03	1.62	41.15	.50	12.70	2500	500
SFP-16	-16	1	.98	24.89	1.04	26.42	2.75	69.85	1.88	47.75	.50	12.70	1000	200
SFP-20	-20	1-1/4	1.23	31.24	1.29	32.77	3.12	79.25	2.00	50.80	.50	12.70	1000	200
SFP-24	-24	1-1/2	1.46	37.09	1.55	39.37	3.69	93.73	2.38	60.45	.75	19.05	500	100
SFP-32	-32	2	1.96	49.79	2.05	52.07	4.00	101.60	2.75	69.85	.75	19.05	500	100
SFP-40	-40	2-1/2	2.46	62.49	2.55	64.77	4.50	114.30	3.25	82.55	.75	19.05	250	50



Your Solutions Provider

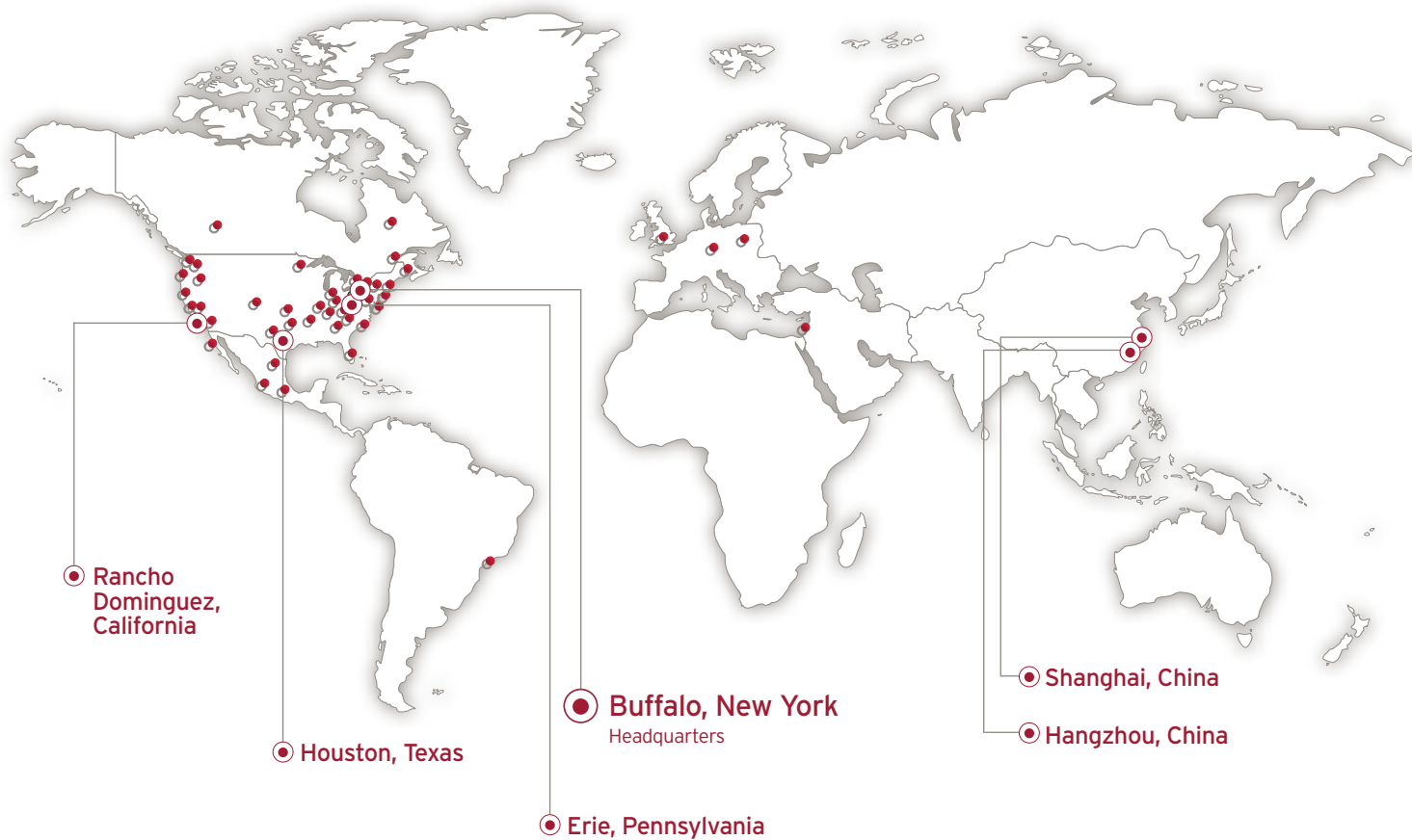
Caplugs also designs, manufactures and delivers millions of other parts to protect components during storage and shipping in industries such as medical, masking, hydraulics, automotive and more.



To view our 12,000+ protective products, visit www.caplugs.com.



Caplugs is the leader in product protection, masking solutions and custom molded components with manufacturing locations and distribution centers all over the world to serve every customer efficiently.



● Manufacturing Plants ● Sales & Distribution Centers



1.888.CAPPLUGS | +1.716.876.9855 | www.caplugs.com | sales@caplugs.com