

## APV DELTA SWmini4

SINGLE SEAT VALVE DN 10, 15, 20

FORM NO.: 207909 REVISION: GB-2

READ AND UNDERSTAND THIS MANUAL PRIOR TO OPERATING OR SERVICING THIS PRODUCT.





## EU Declaration of Conformity for Valves and Valve Manifolds

SPX Flow Technology Germany GmbH  
Gottlieb-Daimler-Str. 13, D-59439 Holzwickede  
herewith declares that the

**APV double seal and double seat valves of the series  
SD4, SDT4, SDU4, SDMS4, SDMSU4, SDTMS4, SWcip4, DSV,  
DA4, D4 SL, D4, DA3, DA3SLD, DE3, DEU3, DET3, DKR2, DKRT2, DKRH2**  
in the nominal diameters DN 25 - 150, ISO 1" – 6" and 1 Sh5 - 6 Sh5

**APV butterfly valves of the series SV1 and SVS1F, SV2 and SVS2F, SVL and SVSL**  
in the nominal diameters DN 25 - 100, DN 125 - 250 and ISO 1" – 4"

**APV ball valves of the series KHI, KHV, BLV1**  
in the nominal diameters DN 15 – 100, ISO 1/2" – 4"

**APV single seat, diaphragm and spring loaded valves of the series  
S2, SW4, SWhp4, SW4DPF, SWmini4, SWT4, SWS4, MF4, MS4, MSP4, AP/T1, CPV,  
RG4, RG4DPF, RGMS4, RGE4, RGE4DPF, RGEMS4, PR2, PRD2, SI2, UF/R3, VRA/H**  
in the nominal diameters DN 10 - 150, ISO 1/2" – 4" and 1 Sh5 - 6 Sh5

and the valve manifolds installed thereof

meet the requirements of the Directive 2006/42/EC.


For official inspections, SPX FLOW presents  
a technical documentation according to Appendix VII of the Machinery Directive,  
this documentation consisting of documents of the development and construction,  
description of measures taken to meet the conformity and to correspond with  
the basic requirements on safety and health, incl. an analysis of the risks,  
as well as an operating manual with safety instructions.

The conformity of the valves and valve manifolds is guaranteed.

Authorised person for the documentation:  
Frank Baumbach

SPX Flow Technology Germany GmbH  
Gottlieb-Daimler-Str. 13, D-59439 Holzwickede, Germany

January 2020

  
-----  
Frank Baumbach  
Engineering Director – Sanitary Components



<b>Table of Content</b>		<b>Page</b>
<b>1.</b>	<b>General Terms</b>	<b>2</b>
<b>2.</b>	<b>Safety Instructions</b>	<b>2–3</b>
<b>3.</b>	<b>Intended Use</b>	<b>3</b>
<b>4.</b>	<b>Mode of Operation</b>	<b>4</b>
4.1.	General terms	
<b>5.</b>	<b>Auxiliary Equipment</b>	<b>5–6</b>
5.1.	Valve position indication	
5.2.	Control unit	
5.3.	Adapter for control unit	
5.4.	Single parts	
5.5.	Housing connections	
<b>6.</b>	<b>Cleaning</b>	<b>7</b>
6.1.	Cleaning recommendation	
<b>7.</b>	<b>Installation</b>	<b>8–9</b>
7.1.	General terms	
7.2.	Shut-off valve SWmini 41/42	
7.3.	Change-over valve SWmini 43/44	
7.4.	Welding Instructions	
7.4.1.	Shut-off valve SWmini 41/42	
7.4.2.	Change-over valve SWmini 43/44	
<b>8.</b>	<b>Dimensions / Weights</b>	<b>10–11</b>
8.1.	SWmini4	
8.2.	Housing variants	
<b>9.</b>	<b>Technical Data</b>	<b>12–13</b>
9.1.	General terms	
9.2.	Compressed air quality	
9.3.	Valve stroke and closing pressure	
9.4.	Flow rates	
<b>10.</b>	<b>Materials</b>	<b>13</b>
<b>11.</b>	<b>Maintenance</b>	<b>14</b>
<b>12.</b>	<b>Service Instructions - Shut-off valve</b>	<b>15–17</b>
12.1.	Dismantling from the line system	
12.2.	Dismantling of wear parts	
12.3.	Installation of wear parts	
12.4.	Assembly of valve	
<b>13.</b>	<b>Service Instructions - Change-over valve</b>	<b>18–20</b>
13.1.	Dismantling from the line system	
13.2.	Dismantling of wear parts	
13.3.	Installation of wear parts	
13.4.	Assembly of valve	
<b>14.</b>	<b>Service Instructions - Actuator</b>	<b>21</b>
14.1.	Dismantling	
14.2.	Assembly	
14.3.	Change of valve position NC/NO	
<b>15.</b>	<b>Assembly Tool - Seat seal</b>	<b>22</b>
<b>16.</b>	<b>Instructions for Replacement of Guide rod</b>	<b>23</b>
<b>17.</b>	<b>Trouble Shooting</b>	<b>24</b>
<b>18.</b>	<b>Spare Parts Lists</b>	<b>24</b>
	<b>SWmini 41–44 / SWEmini 41–44 - FS/FH - VSM, CU</b>	
	<b>DN10, 15, 20 &amp; 1/2", 3/4", 1"</b>	<b>RN 01.054.815</b>
	<b>SWmini 41–44 / SWEmini 41–44 - with manual actuation</b>	<b>RN 01.054.815-1</b>
	<b>Actuator</b>	<b>RN 01.054.88</b>



---

## 1. General Terms

---

This instruction manual must be read carefully and observed by the competent operating and maintenance personnel.

We point out that we will not accept any liability for damage or malfunctions resulting from the non-compliance with this instruction manual.

Descriptions and data given herein are subject to technical changes.

---

## 2. Safety Instructions

---

The valve must only be assembled, disassembled and reassembled by persons who have been trained in APV valves or by SPX FLOW service team members. If necessary, contact your local SPX FLOW representative.



### **Danger!**

The technical safety symbol draws your attention to important directions for operating safety. You will find it wherever the activities described are bearing risks of personal injury, for individuals and material assets.



### **Do not touch the open valve!**

Risk of injury by sudden valve operation. In dismantled state there is the risk of bruising at movable parts of the valve.



### **Attention!**

Valve design NC (normally closed / air-to-raise, spring-to-lower: Before releasing the housing screws, the valve insert must be relieved by controlling the actuator.



### **Attention!**

Valve design with steam chamber: Risk of injury through burns.

- Regular maintenance intervals including the replacement of all seals must be scheduled in order to prevent leakages.
- Before any maintenance of the valve, the line and cleaning system must be depressurized and discharged if possible!
- Separate electric and pneumatic connections.
- Observe Service Instructions to ensure safe maintenance of the valve.

---

## 2. Safety Instructions

---

**Danger!**

Welded actuators are preloaded by spring force.

**Opening of the actuators is strictly forbidden.  
Danger to life!**

Actuators which are no longer used and / or defective must be disposed in professional manner.

Defective actuators must be returned to your SPX FLOW contact for their professional disposal and free of charge for you.

Please address to your local SPX FLOW representative.

---

## 3. Intended Use

---

The application of the DELTA SWmini4 single seat valve is the shut-off and change-over of line sections.

Arbitrary structural changes at the valve will affect the safety and the intended functionality of the valve and are not permissible.

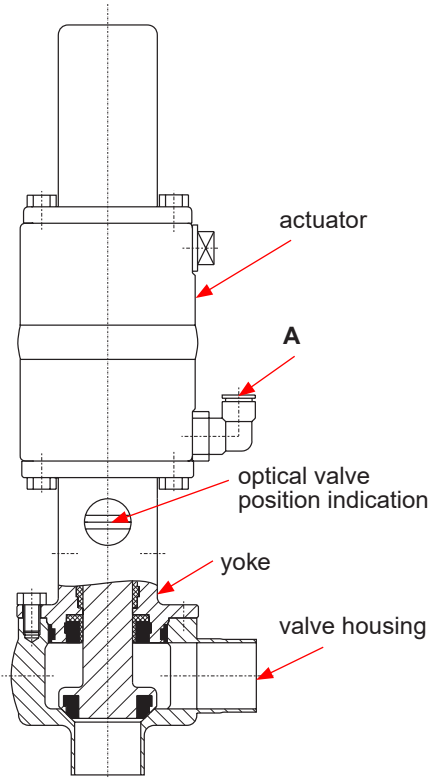
**Approvals and External Evaluations:**

3-A Sanitary Standards, Inc.



## 4. Mode of Operation

### shut-off valve



#### 4.1. General terms

The SWmini4 (DN10, 15, 20) shut-off and change-over valves have been developed for the use in the brewing and beverage industries, in dairy and food applications as well as for the chemical and pharmaceutical industries.

The valves are designed for universal applications and stand out for their increased mechanical reliability and absolute ease of handling.

- Operation by pneumatic actuator with air connection at (A), reset by spring force.
- By different assembly of the actuator, the following designs are possible:  
 NC (FS): actuator normally closed (air-to-raise, spring-to-lower)  
 NO (FH): actuator normally open (air-to-lower, spring-to-raise)  
 (illustrations show NC design)
- The inner parts of the actuator are maintenance-free.
- The standard valves are manufactured without support for proximity switches.
- The valve position is indicated optically in the yoke area.  
 Indication in the upper yoke bore:  
 Valve position closed NC (FS).
- A valve design with steam chamber (fig. 4.2.) is available.  
 During the process, the steam chamber is made subject to creeping steam. Abduction of germs into the product-wetted area is prevented by this means.

### change-over valve

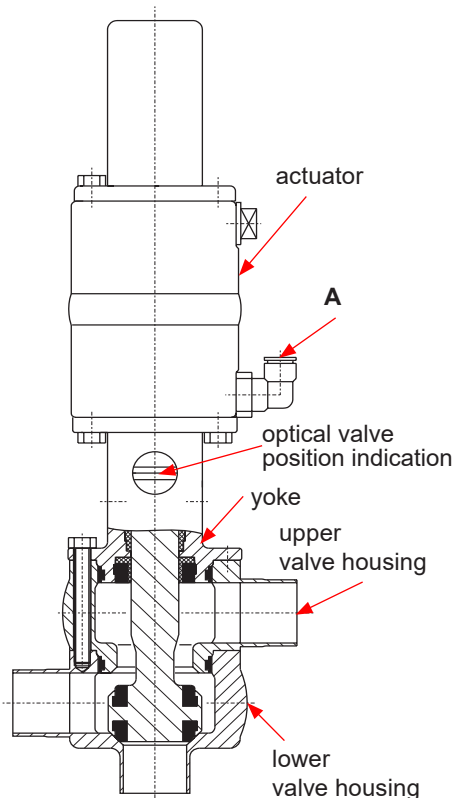
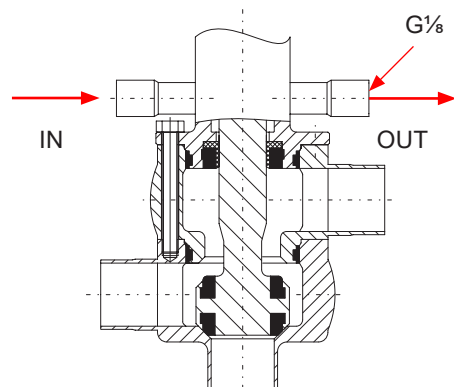
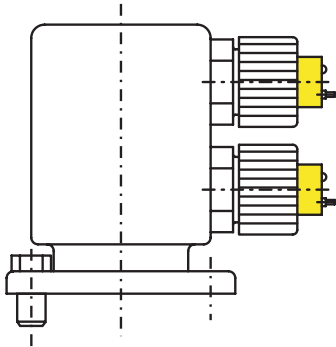


fig. 4.2.



## 5. Auxiliary Equipment

fig. 5.1.



### 5.1. Valve position indication

- A proximity switch holder for the limit position NC or NO of the valve shaft can be installed directly on the actuator.

We recommend using our standard types:  
 Operating distance: 5 mm / Diameter: 11 mm.  
 Operating voltage: 10 - 30 VDC  
 Outlet: operating voltage pnp positive switching  
 Connection: moulded cable 5 m length  
 Protective type: IP 67  
 Reference number: 08 - 60 - 011/93; H16223

If the operator decides to use valve position indicators other than APV type, we cannot take over any guarantee for a faultless function.

fig. 5.2.



### 5.2. Control unit (fig. 5.2.)

Units with feedback switch and solenoid valve for the pneumatic control of the valve to be installed at the actuator are available in fieldbus technology.

For the start-up, assembly and disassembly of the different designs, please refer to the different instruction manuals.

The following different designs are available:

<b>CU4 – Direct Connect</b> ref.-No.; ID-No.	<b>CU41 – S - Direct Connect</b> 08-45-100/93; H320460
<b>CU4 – AS-interface 62 Slaves</b> ref.-No.; ID-No.	<b>CU41 – S - AS-i extended</b> 08-45-110/93; H320467
<b>CU4 – AS-interface 31 Slaves</b> ref.-No.; ID-No.	<b>CU41 – S - AS-i standard</b> 08-45-250/93; H324674
<b>CU3 – Profibus</b> ref.-No.; ID-No.	<b>CU31 – Profibus</b> 08-45-001/93; H315495
<b>CU3 – DeviceNet</b> ref.-No.; ID-No.	<b>CU31 – DeviceNet</b> 16-31-240/93; H209422

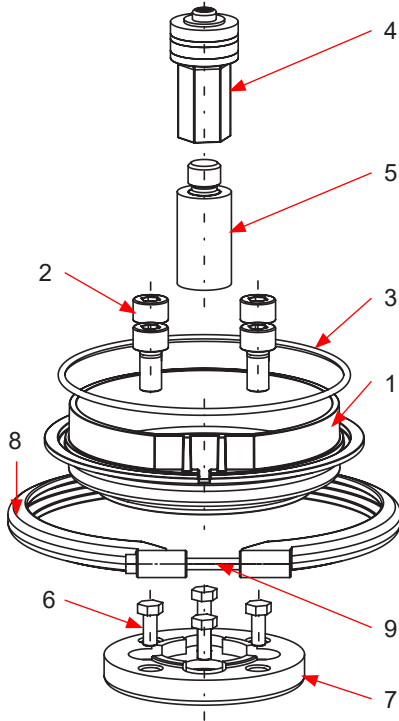
### 5.3. Adapter for control unit

- For the assembly of the Control Unit on the SWmin 4 valve, two adapters are required.

adapter	
<b>Designation</b> ref.-No.; ID-No.	<b>CU4-Smini – adapter complete</b> 000 08-48-613/93; H321989
<b>Designation</b> ref.-No.; ID-No.	<b>CU3 adapter cpl.</b> 000 08-48-415/93; H209430
<b>Designation</b> ref.-No.; ID-No.	<b>CU3 adapter SWmini4</b> 000 08-48-355/93; H207570

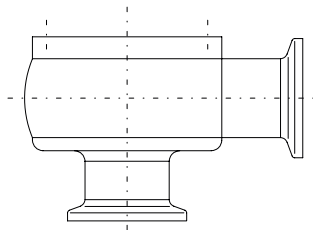
## 5. Auxiliary Equipment

### 5.4. Einzelteile



Single parts CU4-Smini – adapter		
Pos.	Designation	ref.-No. ID-No.
1	CU4 S-adapter	000 08-46-570/93 H319874
2	cylinder screw M8X16 ISO 4762 with hexagon socket	000-65-05-120/13 H79012
3	O-ring 101,27-2,62	000-58-06-493/83 H148389
4	CU4-solenoid cam complete	000 08-60-900/93 H320479
5	CU guide rod prolongation SWmini4 10-20	000 15-26-070/93 H208096
6	hexagon screw M5x12	000 65-01-033/15 H78737
7	CU3 adapter SWmini4	000 08-48-355/93 H207570
8	CU4 clamp halves complete	000 08-46-569/93 H319873
9	cylinder screw ISO 4762 M4x40 hexagon socket	000 65-05-040/13 H320360

### valve housing with clamp connection



### 5.5. Housing connections

clamp connections acc. to ISO 2852

The valves can be supplied complete with clamp connections.

The combination of weld ends and clamp connections is possible.

---

## 6. Cleaning

---

### 6.1. Cleaning recommendation

The valve passage is cleaned by the cleaning liquid during the cleaning of the connected pipeline.

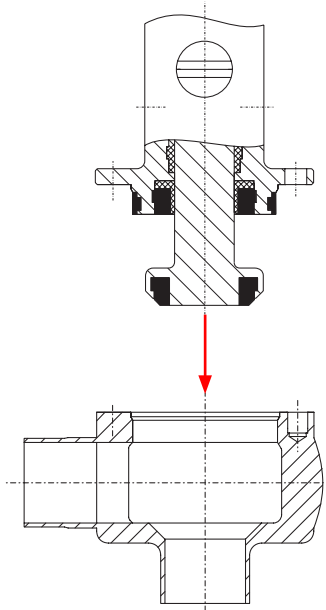
The valve design with actuator is especially suited for CIP-cleaning (Cleaning-In-Place). Optimum cleaning is guaranteed if, during the cleaning process, the valve seat is driven through the actuator into the open position or opened in intervals.

Cleaning liquids, times and processes are to be adjusted for the individual application depending on the degree and constituents of soiling.

The compatibility of the individually selected cleaning process and liquid with the respectively used seals must be verified.

## 7. Installation

### shut-off valve



#### 7.1. General terms

Installation has to be done in such a way that fluids can drain off the valve housing and is preferably to be realized in vertical position.

#### 7.2. Shut-off valve SWmini41 / 42

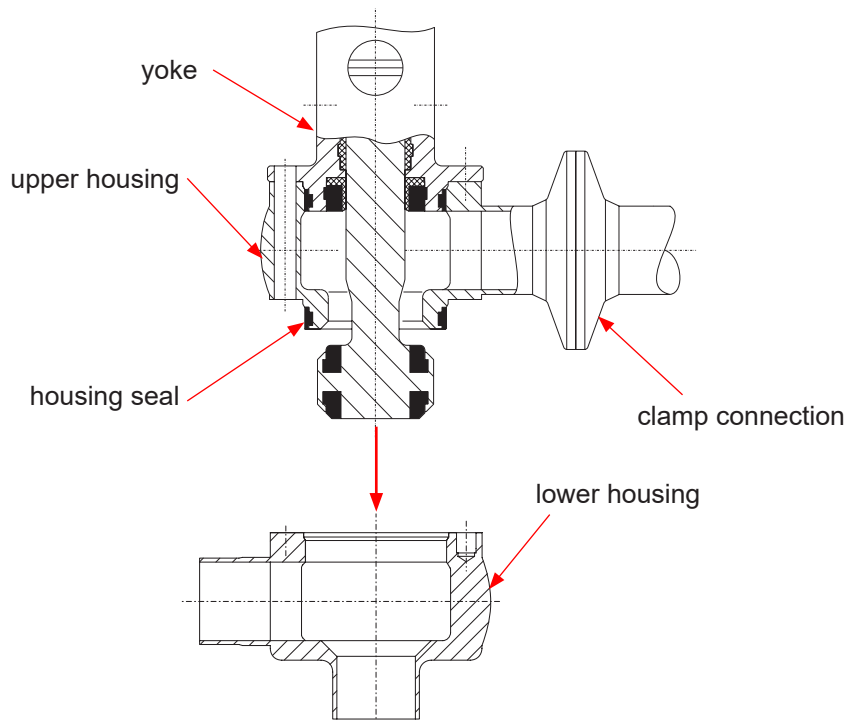
The valve housings can be welded direct into the pipeline (completely dismantable valve insert with actuator).

#### 7.3. Change-over valve SWmini 43/44

One or two detachable connections (e.g. clamps, etc.) must be assembled to the ports of the upper housing to provide for disassembly (e.g. for seal replacement).

The position of the medium and upper housing ports to each other can be mounted staggered by 90° through the screw connection.

### change-over valve



**Attention!**

**Observe Welding Instructions.**

## 7. Installation

### 7.4. Welding Instructions

#### 7.4.1. Shut-off valve SWmini 41/42

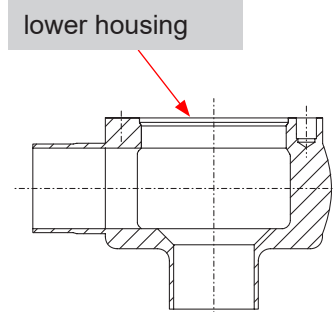
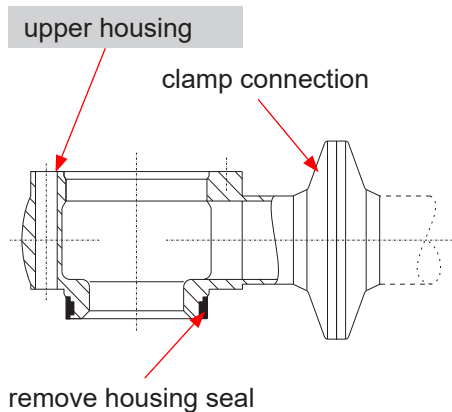
- Before welding of the valves, remove the valve insert from the housing (see chapter 12.1. 3. - 4.).  
See to a careful handling of the parts to avoid damage.

#### 7.4.2. Change-over valve SWmini 43/44

- The lower housing part (1), only, can be welded direct into the pipe system.  
Before welding of the lower housing, partly dismantle the valve (see chapters 13.1. 4. - 5. and 13.2. 1. - 4.).  
Remove the lower housing seal from the upper housing.  
Provide the upper housing and the upper pipeline with detachable connections (flange, clamps, etc.).

See to a careful handling to avoid damage to the parts.

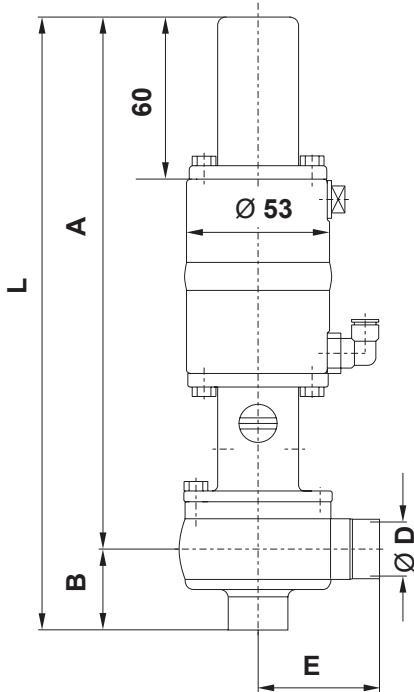
- Welding may only be carried out by certified welders (DIN EN ISO 9606-1). (Seam quality DIN EN ISO 5817).
- The welding of the valve housings must be undertaken in such a way that deformation strain cannot be transferred from the outside to the valve body.
- The preparation of the weld must be carried out in butt manner as a square butt joint without air. (Consider shrinkage!)
- TIG orbital welding is preferred!
- After welding of the valve housings or of the mating flanges and after work at the pipelines, the corresponding parts of the installation or pipelines must be cleaned from welding residues and soiling. If these cleaning instructions are not observed, welding residues and dirt particles can settle in the valve and cause damage.
- Any damage resulting from the nonobservance of these welding instructions is not subject to our guarantee.
- Welding directives for aseptic applications shall be drawn from the AWS/ANSI Directives and EHEDG Guidelines.



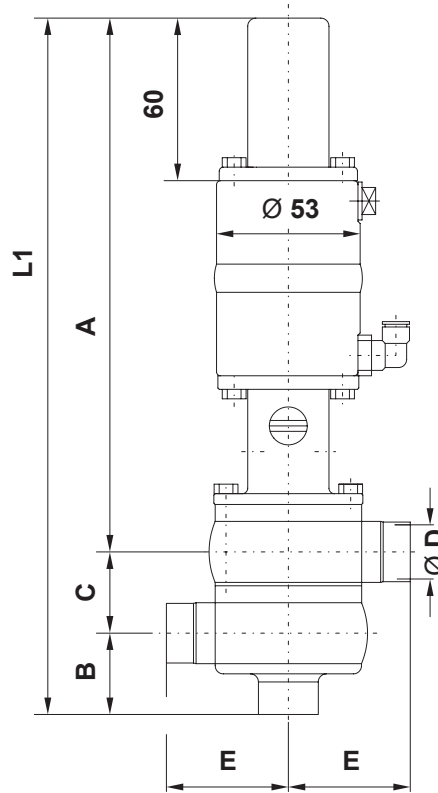
## 8. Dimensions / Weights

### 8.1. SWmini4

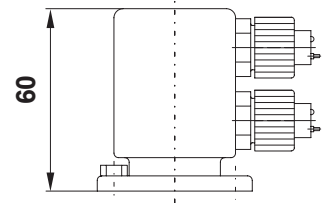
shut-off valve SWmini 41, 42



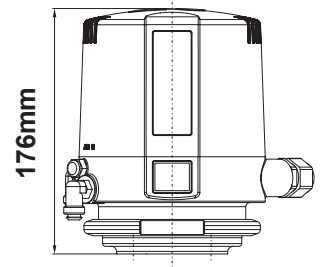
change-over valve SWmini 43, 44



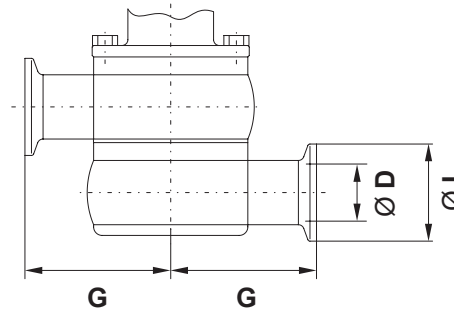
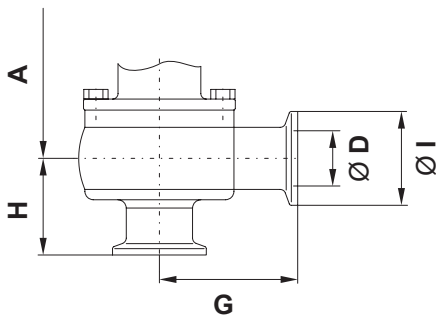
proximity switch holder



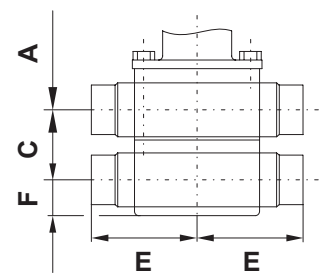
CU4 control unit



SWmini – with clamp port



SWEmini4 design



Dimensions in mm

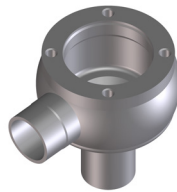
DN	A	B	C	Ø D	E	F	G	H	Ø I	L	L1
10	192	25	20	10	45	10	50	30	34	217	237
15	195	28	26	16	45	13	50	33	34	223	249
20	197	30	30	20	45	15	50	35	34	227	257
Inch											
1/2"	192	25	20	9,4	45	10	50	30	25	217	237
3/4"	195	28	26	15,75	45	13	50	33	25	223	249
1"	197	30	30	22,6	45	15	50	35	50,5	227	257

## 8. Dimensions / Weights

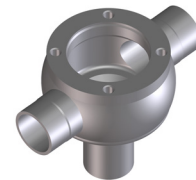
Weights in kg				
DN	SWmini 41, 42 with weld end	SWmini 43, 44 with weld end	SWmini 41, 42 with clamp port	SWmini 43, 44 with clamp port
10	1,55	1,8	1,6	1,9
15	1,6	1,9	1,65	2,0
20	2,1	2,1	1,8	2,3

### 8.2. Housing variants

SWmini 41



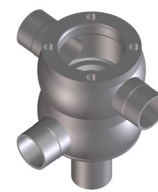
SWmini 42



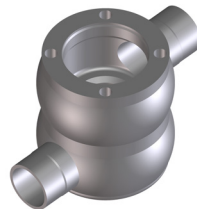
SWmini 43



SWmini 44



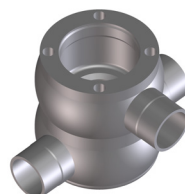
SWEmini 41



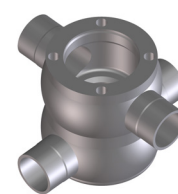
SWEmini 42



SWEmini 43



SWEmini 44





## 9. Technical Data

### 9.1. General data

- max. line pressure: **5 bar**
- max. operating temperature: **135 °C EPDM, HNBR  
\*FPM, \*VMQ**
- short-term load: **140 °C EPDM, HNBR  
\*FPM, \*VMQ  
\*(no steam)**
- actuator
  - min. pneumatic pressure: **6 bar**
  - max. pneumatic pressure: **10 bar**
- air connection (for hose): **6x1 mm standard  
1/4" option**
- steam connection: **G1/8**

### 9.2. Compressed air quality

- **quality class acc. to DIN ISO 8573-1**
- **content of solid particles:**
  - quality class 3**
  - max. number of particles per m<sup>3</sup>
  - 10000 of 0,5 µm < d ≤ 1,0 µm
  - 500 of 1,0 µm < d ≤ 5,0 µm
- **content of water:**
  - quality class 3**
  - max. dew point temperature -20 °C
  - For installations at lower temperatures or at higher altitudes, additional measures must be considered to reduce the pressure dew point accordingly.
- **content of oil:**
  - quality class 1**
  - max. 0,01 mg/m<sup>3</sup>

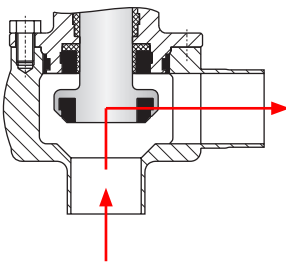
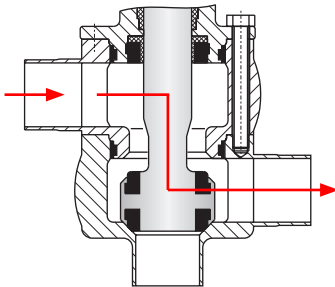
**The oil applied must be compatible with Polyurethane elastomer materials.**

### 9.3. Valve stroke and closing pressure

DN	shut-off valve SWmini 41, 42		change-over valve SWmini 43, 44	
	stroke in mm	closing pressure in bar	stroke in mm	closing pressure in bar
<b>10</b>	4	8	5	8
<b>15</b>	7	8	7	8
<b>20</b>	7	6,5	7	6,5

## 9. Technical Data

### 9.4. Flow rates kvs in m<sup>3</sup>/h

	shut-off valve	change-over valve
		
<b>DN</b>		
<b>10</b>	2,7 m <sup>3</sup> /h	2,5 m <sup>3</sup> /h
<b>15</b>	7,0 m <sup>3</sup> /h	5,0 m <sup>3</sup> /h
<b>20</b>	9,0 m <sup>3</sup> /h	7,5 m <sup>3</sup> /h

## 10. Materials

<b>product-wetted parts</b>	
- housing, upper housing, yoke, valve shaft:	<b>1.4404 (DIN EN 10088)</b>
<b>other parts</b>	
- actuator, actuator screw, centering washer, screws, guide rod, nut:	<b>1.4301 (DIN EN 10088)</b>
- cover, lid, proximity switch holder:	<b>PA 12 black</b>
<b>seals</b>	
- housing seals:	<b>EPDM</b>
option:	<b>FPM, VMQ, HNBR</b>
- shaft seal:	<b>EPDM / PTFE</b>
option:	<b>VMQ / PTFE</b>
	<b>FPM / PTFE</b>
	<b>HNBR / PTFE</b>
- actuator seal:	<b>quadring NBR</b>
	<b>O-ring NBR</b>
- guide bushing:	<b>PTFE</b>

## 11. Maintenance

The maintenance intervals depend on the corresponding application and are to be determined by the operator himself carrying out temporary checks.



Required tools:  
 1 x spanner SW 8  
 1 x spanner SW 13  
 1 x spanner SW 17  
 1 x spanner SW 19

- For the valve service complete seal kits are supplied (see spare parts lists). The appropriate grease is included in the scope of supply of a complete seal kit.
- Exchange of seals is carried out according to service instructions.
- Assembly of the valve and change of valve design NC (FS) or NO (FH), see service instructions.
- Installation of actuator, see Service Instructions.
- The inner parts of the actuator are maintenance-free.



**Slightly grease all seals before their installation.**  
**Attention! Use only those greases being suited for the respective seal material !**

**Recommendation:**

APV assembly grease for EPDM, FPM, HNBR and NBR  
 (0,75 kg/tin - ref.-No. 000 70-01-019/93; H147382)  
 (60 g/tube - ref.-No. 000 70-01-018/93; H147381)

**or**

APV assembly grease for VMQ (silicone)  
 (0,6 kg/tin - ref.-No. 000 70-01-017/93; H147380)  
 (60 g/tube - ref.-No. 000 70-01-016/93; H147379)

- ! Do not use grease containing mineral oil for EPDM seals.
- ! Do not use Silicone-based grease for VMQ seals.

**Assembly tool for seat seal**

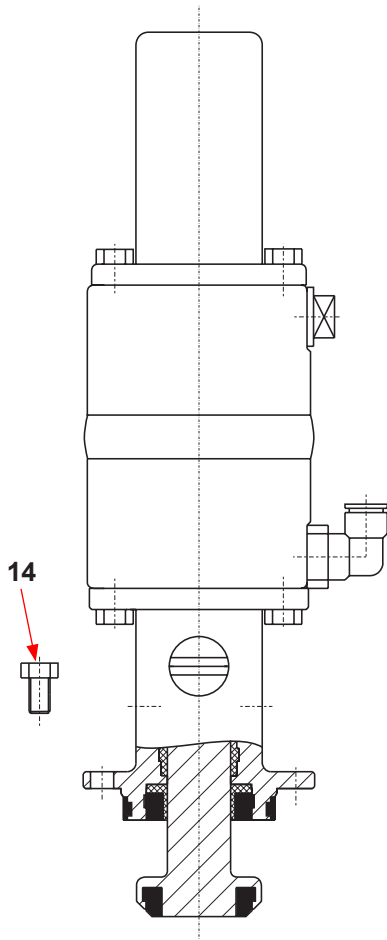
To simplify the installation of the seat seal in the valve shaft, the following assembly tools are available

<b>assembly tool for SWmini 41 / 42 / 43 / 44</b>	
<b>DN</b>	ref.-No.; ID-No.
<b>10, 15</b>	000 51-13-052/17; H314147
<b>20</b>	000 51-13-050/17; H207967

## 12. Service Instructions - Shut-off valve

### SWmini4 shut-off valve

The item numbers refer to the corresponding spare parts lists  
**SWmini 41–44, SWEmini 41–44 FS/FH-VSM,**  
**CU RN 01.054.815 / RN 01.054.816**



### 12.1. Dismantling from the line system

1. Shut off line pressure and discharge lines if possible.
2. **Valve design with steam chamber:**
  - **Shut off steam supply. Separate connection only afterwards.**



**Attention!** Risk of injury by hot components.

3. Detach electric connections.
  - Proximity switches at the proximity switch holder.
  - Control Unit, see instruction manual.

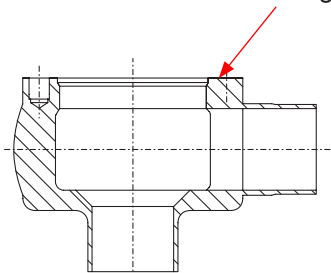
#### 4. Valve design NC: Control actuator with air.



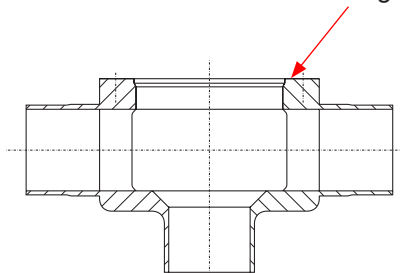
**Do not touch movable parts!**  
**Risk of injury by sudden valve operation.**

5. Remove screws (14) M5x12. Withdraw the insert from the housing .
6. Shut off compressed air and remove compressed air supply.

SWmini 41 housing

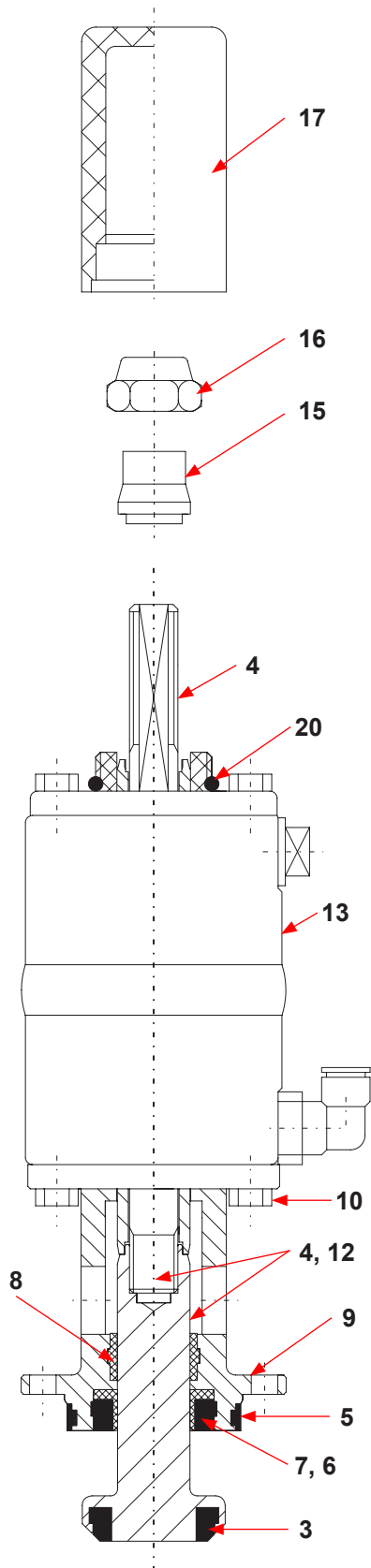


SWmini 42 housing



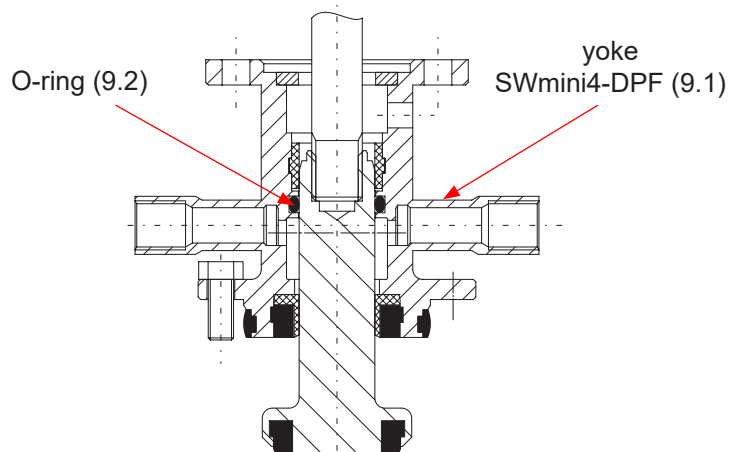
## 12. Service Instructions - Shut-off valve

### 12.2. Dismantling of wear parts



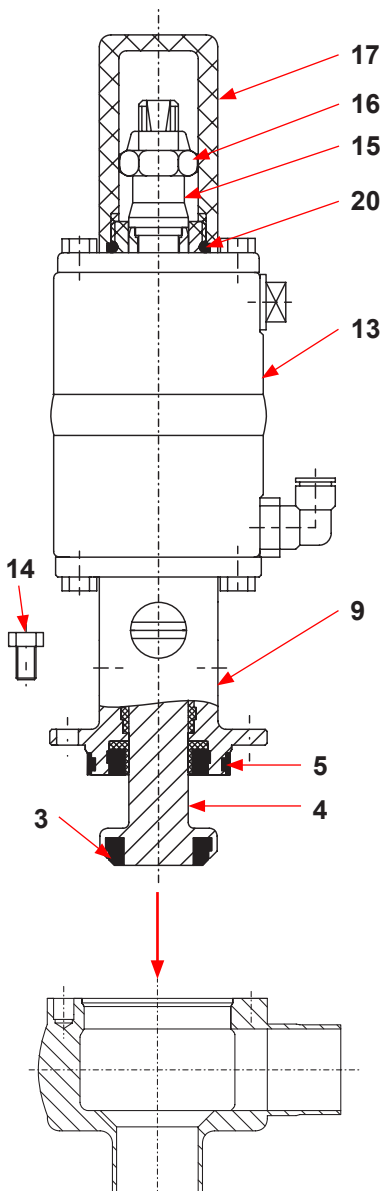
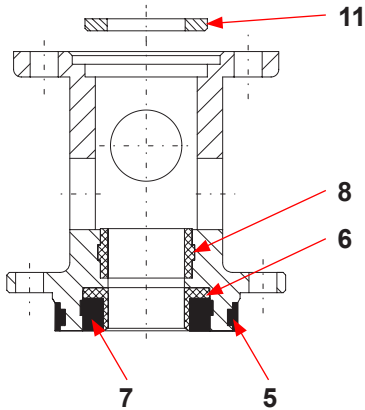
1. Remove the covering cap (17).  
 Valve design with proximity switch holder:  
 Remove proximity switch holder (18) and actuator screw (19).  
 Valve design with control unit:  
 Remove cover, actuator screw and guide rod extension (24).  
 Remove the control unit.
  2. Unscrew the safety nut (16) while holding up the centering washer (15), take off centering washer.
  3. Withdraw the valve shaft (4) with guide rod (12) to the bottom.
  4. Separate the yoke (9) from the actuator (13) by releasing the hex. screws (10). Remove the washer (11) from the yoke.
  5. Remove the o-ring (20).
  6. Take off the seat seal (3) by means of a pointed object from the valve shaft.
  7. Remove the housing seal (5).
  8. Dismantle guide bush (8), seat seal (7) and shaft seal (6) from the yoke.
- ! Replacement of actuator seals, see chapter 14.  
 Service Instructions - Actuator.
9. In the design with steam chamber, the standard yoke is replaced by the yoke (9.1) with steam connections. Additionally, one o-ring (9.2) is required.

illustration SWmini4-DPF



## 12. Service Instructions - Shut-off valve


### yoke



### 12.3. Installation of wear parts

1. Insert the guide bush (8) into the yoke (9). Insert the shaft seal (6) and press in the slightly greased seat seal (7). See to the correct mounting direction.
2. Slightly grease the housing seal (5) and insert it into the groove of the yoke.
3. Install the seat seal (3) by means of the assembly tool (see item 15.) in the valve shaft (4).
4. Place the washer (11) in the yoke (9). Mount the yoke at the actuator (13).
5. Slide the valve shaft (4) through the yoke (9) and the actuator (13), place the centering washer (15) and tighten it with the safety nut (16). Hold up the centering washer during this process.
6. Insert the o-ring (20) in the actuator cover.
7. Fasten the covering cap (17).  
**Valve design with proximity switch holder:**  
 Fasten actuator screw (19) and proximity switch holder (18).  
**Valve design with control unit:**  
 Fasten control unit (without cover).  
 Fasten guide rod extension (24) and actuator screw.  
 Tighten the cover.

### 12.4. Assembly of valve

1. Carefully place the valve insert in the housing and slightly screw the hex. screws (14) M5x12 in the threaded bore (do not tighten). The housing seal (5) must not be damaged during this process.
  2. Connect compressed air supply.
  3. **Valve design NC: Control actuator with air.**
- 
- Do not reach for movable valve parts!  
Risk of injury by sudden valve actuation.**
4. Tighten the hex. screws (14).
  5. Disconnect pneumatic air.
  6. Connect electric connections.  
Plug proximity switches in their holders and fasten them.
  7. Valve design with steam chamber: Connect parts.

## 13. Service Instructions - Change-over valve

The item numbers refer to the corresponding spare parts lists  
**SWmini 41–44, SWEmini 41–44 FS/FH-VSM,**  
**CU RN 01.054.815 / RN 01.054.816**

### SWmini4 change-over valve

#### 13.1. Disassembly from line system

1. Shut off line pressure and discharge lines if possible.
2. **Valve design with steam chamber:**
  - **Shut off steam supply. Separate connection only afterwards.**



**Attention!** Risk of injury by hot components.

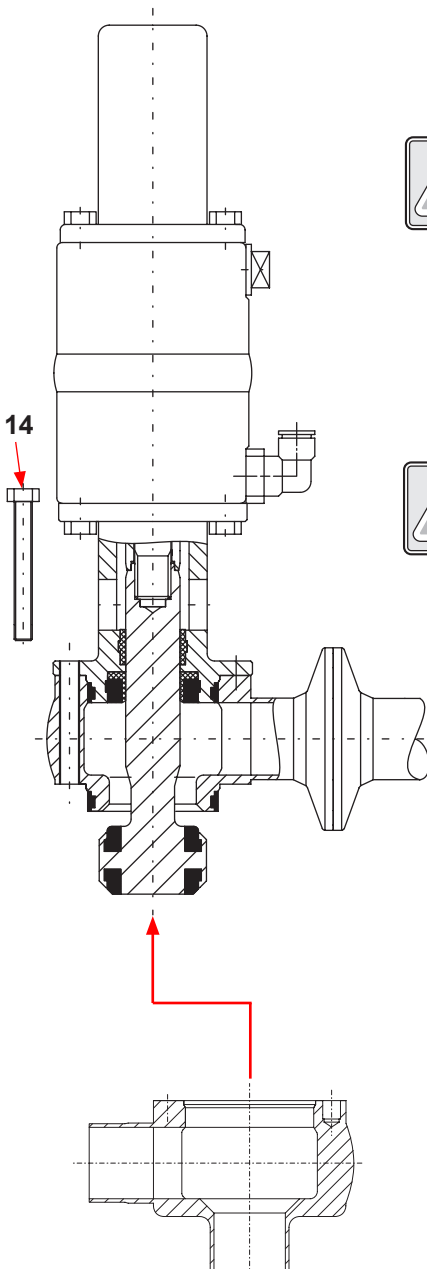
3. Release clamp and flange connection at the upper housing.
4. Detach electric connections.
  - Proximity switches at the proximity switch holder.
  - Control Unit, see instruction manual.

5. **Valve design NC: Control actuator with air.**



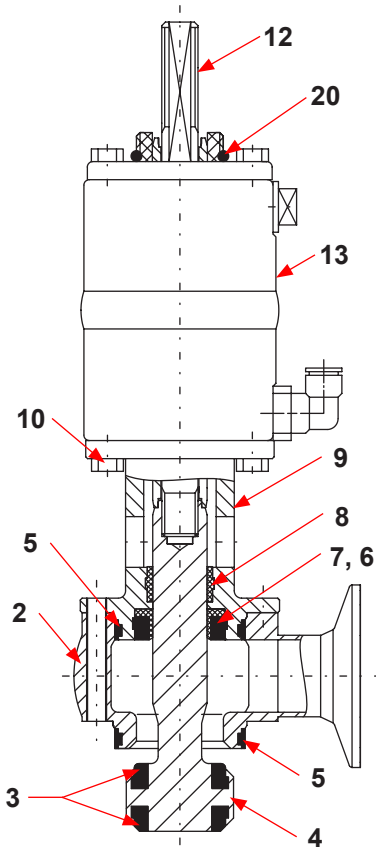
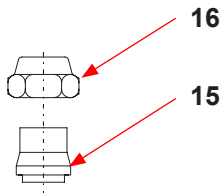
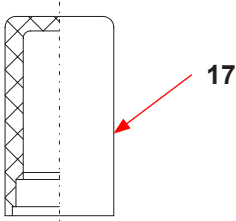
**Do not touch movable parts!**  
**Risk of injury by sudden valve operation.**

6. Remove the hex. screws (14) M5x40.  
 Withdraw the valve insert with the upper housing from the lower housing.
7. Shut off compressed air and remove compressed air supply.

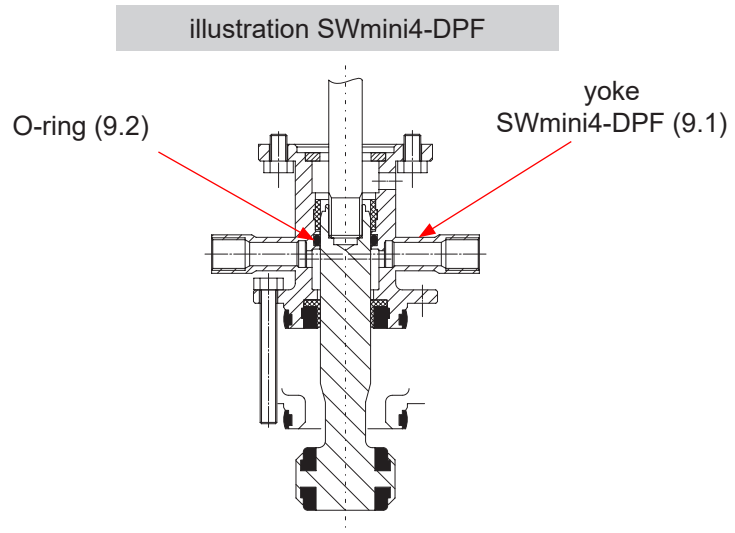


## 13. Service Instructions - Change-over valve

### 13.2. Dismantling of wear parts



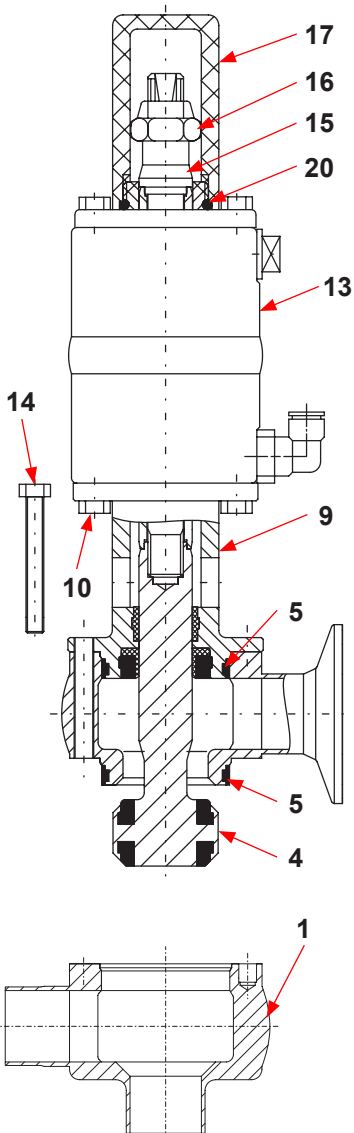
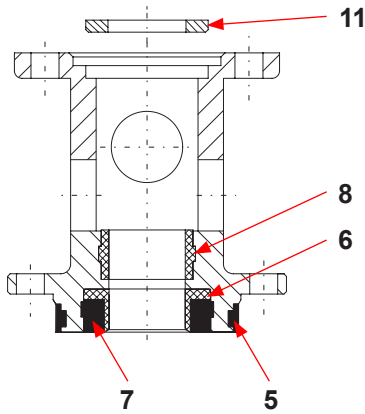
1. Remove the covering cap (17).  
 Valve design with proximity switch holder:  
 Remove proximity switch holder (18) and actuator screw (19).  
 Valve design with control unit:  
 Remove cover, actuator screw and guide rod extension (24).  
 Remove the control unit.
  2. Unscrew the safety nut (16) while holding up the centering washer (15), take off centering washer.
  3. Withdraw the valve shaft (4) with guide rod (12) to the bottom.
  4. Withdraw upper housing (2) and remove the housing seal (5).
  5. Separate the yoke (9) from the actuator (13) by releasing the hex. screws (10). Remove the washer (11) from the yoke.
  6. Remove the o-ring (20).
  7. Take off the seat seal (3) by means of a pointed object from the valve shaft (4).
  8. Remove the housing seal (5) from the yoke (9).
  9. Dismantle guide bush (8), seat seal (7) and shaft seal (6) from the yoke.
- ! Replacement of actuator seals, see chapter 14.  
 Service Instructions - Actuator.
10. In the design with steam chamber, the standard yoke is replaced by the yoke (9.1) with steam connections. Additionally, one o-ring (9.2) is required.





## 13. Service Instructions - Change-over valve

yoke



### 13.3. Installation of wear parts

1. Insert the guide bush (8) into the yoke (9). Insert the shaft seal (6) and press in the slightly greased seat seal (7). See to the correct mounting direction.
2. Slightly grease the housing seals (5) and insert them into the groove of the yoke (9) and of the upper housing (2).
3. Install the seat seal (3) by means of the assembly tool (see item 15.) in the valve shaft (4).
4. Place the washer (11) in the yoke (9). Mount the yoke at the actuator (13).



5. Press the yoke with actuator in the upper housing (2).  
**Attention!** Do not damage the housing seal (5).  
Observe bore positions of housing and yoke.
6. Slide the valve shaft (4) through the housing (2), yoke (9) and actuator (13), place the centering washer (15) and tighten it with the safety nut (16). Hold up the centering washer during this process.
7. Insert the o-ring (20) in the actuator cover.
8. Fasten the covering cap (17).

#### Valve design with proximity switch holder:

Fasten actuator screw (19) and proximity switch holder (18).

#### Valve design with control unit:

Fasten control unit (without cover).

Fasten guide rod extension (24) and actuator screw.

Tighten the cover

### 13.4. Assembly of valve

1. Carefully place the valve insert in the housing (1). Check the correct fit of the seal of the clamp or flange connection at the upper housing during this process.



**Attention!** The housing seal (5) must not be damaged during this process.

2. Slightly screw the hex. screws (14) M5x40 in the threaded bores (do not tighten).
3. Connect compressed air supply.
4. **Valve design NC: Control actuator with air.**

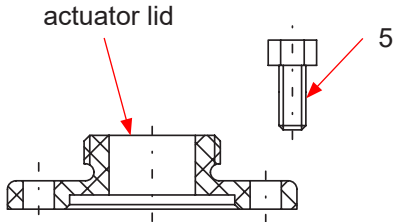


**Do not reach for movable valve parts!**  
**Risk of injury by sudden valve actuation.**

5. Tighten the hex. screws (14).
6. Disconnect pneumatic air.
7. Firmly tighten clamp and flange connections.
8. Connect electric connections.  
Plug proximity switches in their holders and fasten them.
9. Valve design with steam chamber: Connect parts.

## 14. Service Instructions - Actuator

The item numbers refer to the actuator spare parts lists:  
**RN 01.054.88**



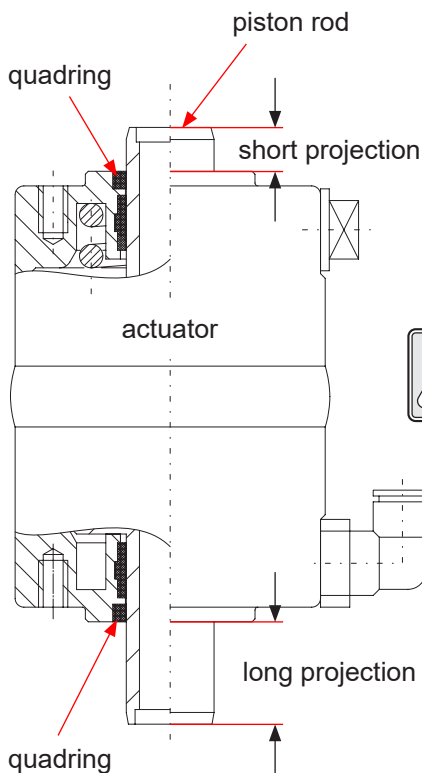
### 14.1. Disassembly



#### Attention!

Before starting the disassembly, see to the valve design NC or NO.

1. Release hex. screws (5) and remove actuator cover (2) or adapter SWmini4 (21) from actuator (13).
2. Remove quadrings (6) from the grooves.



### 14.2. Assembly

1. Provide quadrirings (6) with a thin grease layer and press them in the seal grooves.
2. Fasten actuator cover or SWmini4 adapter on the actuator by means of the hex. screws (5).



#### Attention!

Observe valve design NC or NO.

- short projection of piston rod = design **NC**
- long projection of piston rod = design **NO**

### 14.3. Change of valve position NC/NO

By turning the actuator by 180°, the required design NC or NO can be determined.

**NC** (FS) = normally closed (air-to-raise, spring-to-lower)

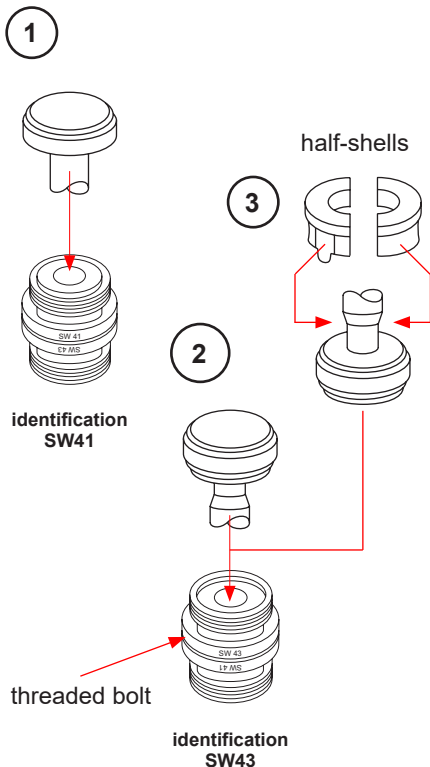
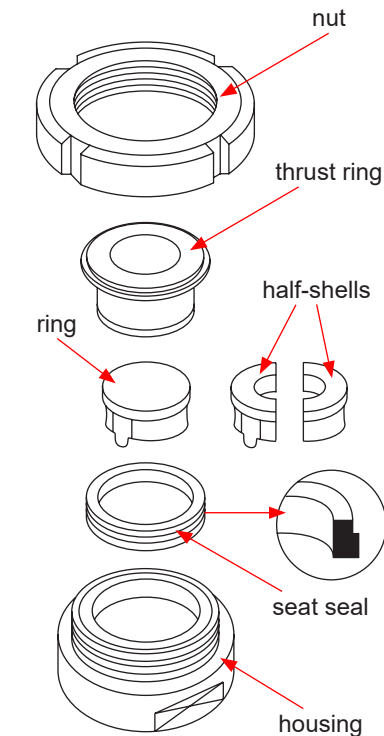
**NO** (FH) = normally open (air-to-lower, spring-to-raise)

Crucial for the reconstruction is the assembly of the actuator cover.

#### Assembly of actuator cover:

- short projection of piston rod = design **NC** (FS)
- long projection of piston rod = design **NO** (FH)

## 15. Assembly Tool for Seat Seal



### The assembly tool consists of:

- nut
- thrust ring
- ring with venting nose  
(to be used for the installation of the seat seal in position ①+ ② see illustration).
- two half-shells, one with venting nose  
(to be used for the installation of the seat seal in position ③ see illustration)
- housing
- threaded bolt

### Installation of seat seal in valve shaft

1. Insert the valve shaft in the housing in such a way that the seal groove is in the housing.
2. Clamp the shaft in the housing by means of the threaded bolt (observe the corresponding design SW41 or SW43). Clamp the housing in a vice.

### 3. Installation ①+ ②

Provide the seat seal with a thin layer of APV assembly grease. Place the seal on the ring with venting nose until it stops. Introduce the ring with the installed seat seal in the housing and press it down to a sensible stop.

### 4. Installation ③

Provide the seat seal with a thin layer of APV assembly grease. Place the two half-shells around the reduced shaft and slide the seat seal over the shaft and over the half-shells.

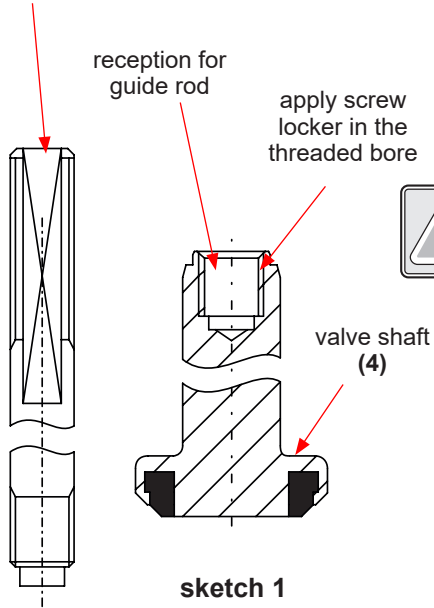
5. Slide the thrust ring on the seat seal. Screw on the groove nut and tighten it with a hook spanner until it stops.
6. Release the groove nut. Take thrust ring and ring (half-shells) off the housing.
7. Take housing out of the vice.
8. Unscrew threaded bolts. Take valve shaft from the housing.

**Check the even fit of the seat seal.**

Assembly tool for SWmini 41 / 42 / 43 / 44	
DN	reference No.; ID-No.
10, 15	000 51-13-052/17; H314147
20	000 51-13-050/17; H207967

## 16. Instructions for Replacement of Guide Rod

guide rod (12)



1. Unscrew the guide rod (12) from the lower valve shaft (4).
2. Clean the valve shaft (remove grease and impurities).
3. Apply a drop of a screw locker (e.g. type: Loctite-semi-solid) in the area of the threaded bore of the lower valve shaft (see sketch 1).
4. Clamp the valve shaft in a vice.  
**Attention!** Use protective cover.
5. Screw in guide rod and tighten it.

## 17. Trouble Shooting

Trouble	Remedy
Leakage between yoke and housing	Replace upper housing seal (5).
Leakage between upper and lower housing	Replace lower housing seal (5).
Leakage out of the lower yoke bore	Replace guide bush (8), shaft seal (6) and seat seal (7). <b>Attention!</b> Check surface of valve shaft, replace valve shaft if damaged (see instructions for replacement of guide rod).
<b>Actuator</b>	
Air escapes permanently at the upper and lower piston rod	Replace quadding (6).
Air escapes permanently from the venting plug	Replace complete actuator (13).
<b>Design with steam chamber</b>	
Steam comes out of the lower yoke bore	Replace guide bush (8) and O-ring (9.2).
Leakage in the steam line	Replace guide bush (8), shaft seal (6) seat seal (7) and O-ring (9.2).

## 18. Spare Parts Lists

The reference numbers of the spare parts for the different valve designs and sizes are included in the attached spare parts drawings with corresponding lists.

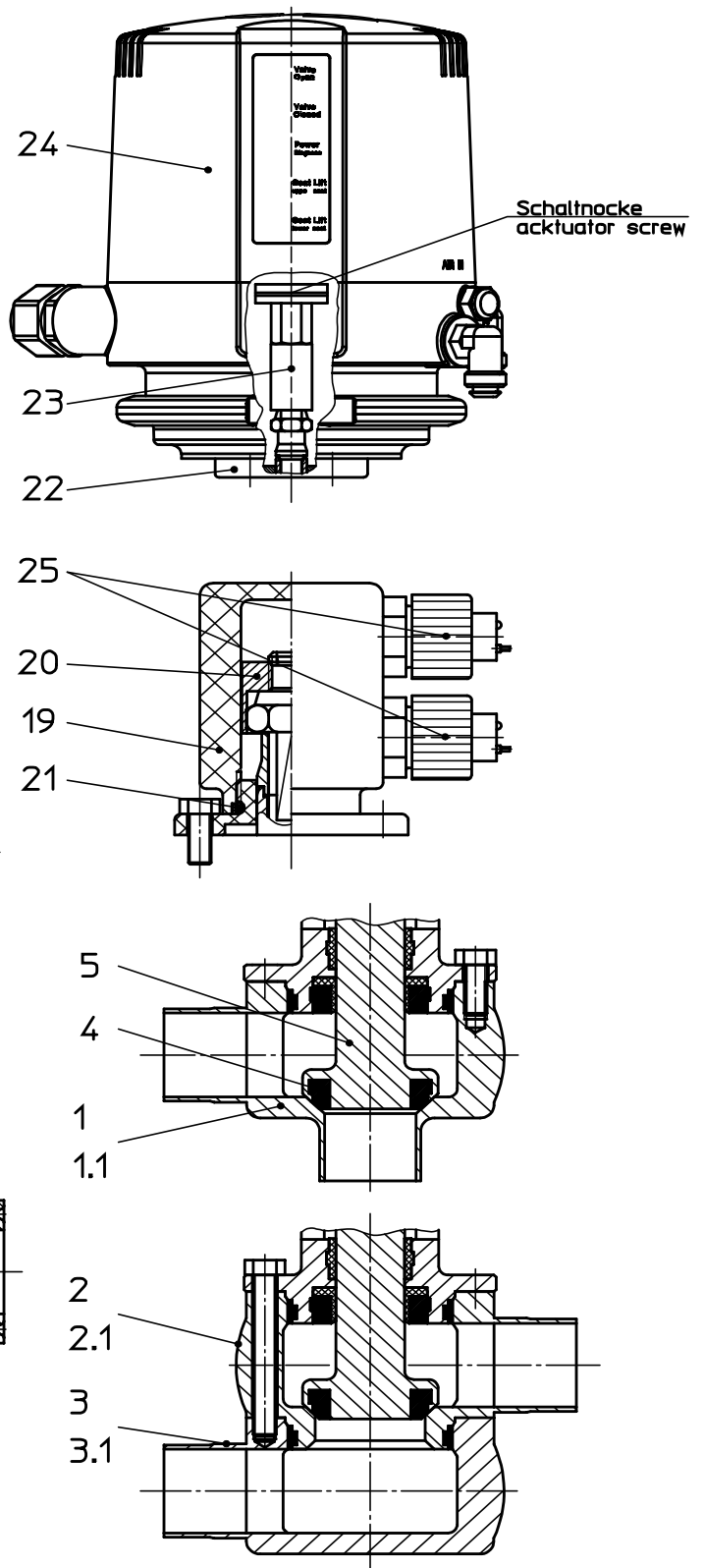
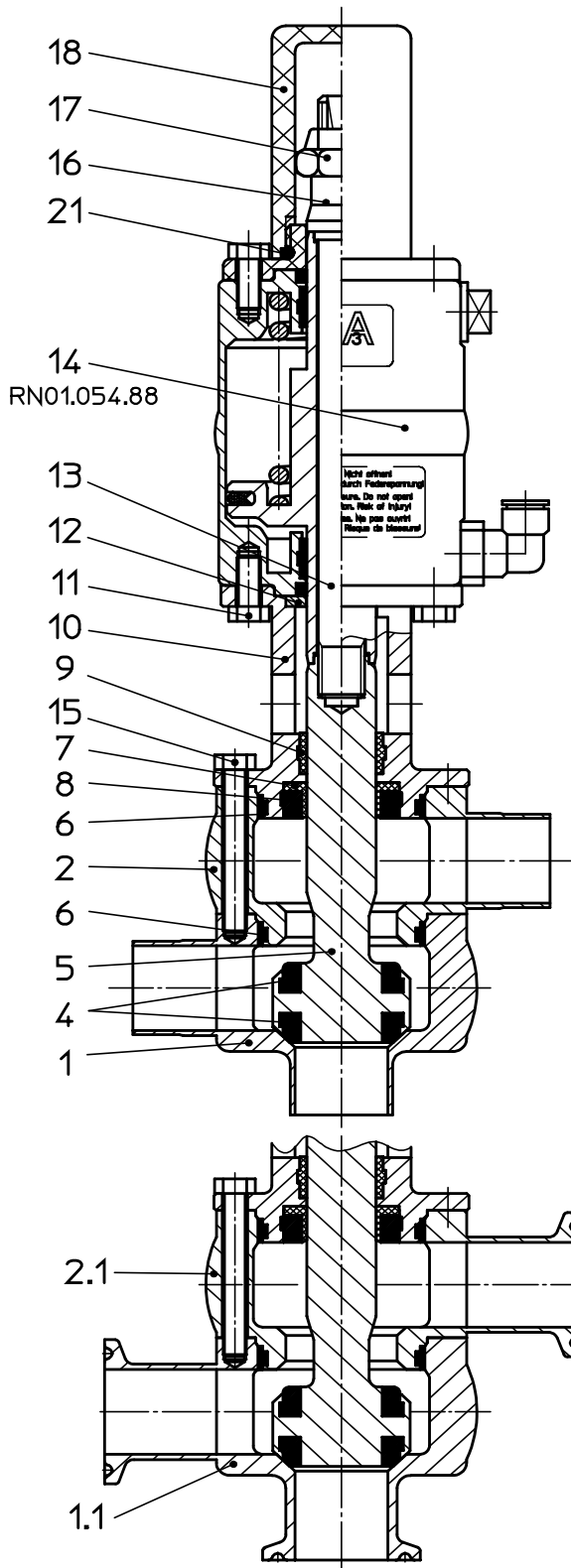
Please indicate the following data to place an order for spare parts:

- number of required parts
- reference number
- designation

subject to change




Weitergabe sowie Vervielfältigung dieser Unterlage, Verwertung und Mitteilung ihres Inhalts nicht gestattet, soweit nicht schriftlich zugestanden. Verstöße verpflichten zum Schadensersatz und kann strafrechtliche Folgen haben (Paragraf 18 UWG, Paragraf 106 UrhG). Eigentum und alle Rechte, auch für Patenterteilung und Gebrauchsmustereintragung, vorbehalten. SPX FLOW, Germany



Datum:	30.10.13	14.10.14							
Name:	Trytko	Trytko							
Geprüft:									

Ersatzteilliste: spare parts list  
**SWmini41 - 44, SWEmini41 - 44 FS-CU und VSM / and PSH**  
**DN 10,15,20 Schweißenden und Klemmverbindung / weld end and clamp connection**  
**1/2", 3/4", 1" Zoll -Klemmverbindung / inch -clamp connection**



SPX FLOW  
Germany


Blatt 1 von 6

**RN 01.054.815**

Weitergabe sowie Vervielfältigung dieser Unterlagen, Verwertung und Mitteilung ihres Inhalts nicht gestattet, soweit nicht schriftlich zugestanden. Verstoß verpflichtet zum Schadensersatz und kann strafrechtliche Folgen haben (Paragraf 18 UWG, Paragraph 106 UrhG). Eigentum und alle Rechte, auch für Patenterteilung und Gebrauchsmusteranmeldung, vorbehalten. SPX FLOW, Germany

Ersatzteilliste: spare parts list

**SWmini41 - 44, SWEmini41 - 44 FS-CU und VSM / and PSH**  
**DN 10, 15, 20 Schweißenden und Klemmverbindung / weld end and clamp connection**  
**1/2", 3/4", 1" zoll- Klemmverbindung / inch- clamp connection**

Datum:	30.10.13	14.10.14	 SPX FLOW Germany			
Name:	Trytko	Trytko				
Geprüft:						
Datum:			Blatt	2	von	6
Name:			<b>RN 01.054.815</b>			
Geprüft:						

pos. item	Menge quantity	Beschreibung description	Material	DN10	DN15	DN20	1/2"	3/4"	1"
				WS-Nr. ref.-no.	WS-Nr. ref.-no.	WS-Nr. ref.-no.	WS-Nr. ref.-no.	WS-Nr. ref.-no.	WS-Nr. ref.-no.
1	1	Gehäuse Housing	1.4404	3A0 15-60-193/43 H311874	3A0 15-60-194/43 H310384	3A0 15-60-195/43 H207011	3A0 15-60-193/43 H311874	3A0 15-60-194/43 H310384	
	1	Gehäuse Housing		3A0 15-61-193/43 H311875	3A0 15-61-194/43 H310383	3A0 15-61-195/43 H208117	3A0 15-61-193/43 H311875	3A0 15-61-194/43 H310383	
1.1	1	Gehäuse Housing	1.4404	3A0 15-60-189/43 H311876	3A0 15-60-190/43 H310492	3A0 15-60-191/43 H207886	3A0 15-60-239/43 H325653	3A0 15-60-240/43 H326796	3A0 15-60-241/43 H207730
	1	Gehäuse Housing		3A0 15-61-189/43 H311877	3A0 15-61-190/43 H310489	3A0 15-61-191/43 H208116	3A0 15-61-239/43 H325893	3A0 15-61-240/43 H330857	3A0 15-61-241/43 H208118
2	1	Gehäuse Oberteil Housing upper part	1.4404	3A0 15-62-182/43 H311878	3A0 15-62-183/43 H310382	3A0 15-62-185/43 H207010	3A0 15-62-182/43 H311878	3A0 15-62-183/43 H310382	
	1	Gehäuse Oberteil Housing upper part		3A0 15-63-181/43 H311879	3A0 15-63-183/43 H310381	3A0 15-63-185/43 H208120	3A0 15-63-181/43 H311879	3A0 15-63-183/43 H310381	
2.1	1	Gehäuse Oberteil Housing upper part	1.4404	3A0 15-62-193/43 H311880	3A0 15-62-194/43 H310490	3A0 15-62-195/43 H207887	3A0 15-62-196/43 H325652	3A0 15-62-197/43 H326797	3A0 15-62-184/43 H207731
	1	Gehäuse Oberteil Housing upper part		3A0 15-63-180/43 H311881	3A0 15-63-182/43 H310491	3A0 15-63-187/43 H208121	3A0 15-63-196/43 H325890	3A0 15-63-197/43 H331755	3A0 15-63-184/43 H208119
3		Gehäuse Unterteil Housing lower part	1.4404	3A0 15-64-036/43 H331749	3A0 15-64-038/43 H331751	3A0 15-64-040/43 H209463	3A0 15-64-043/43 H331753	3A0 15-64-045/43 H331755	
		Gehäuse Unterteil Housing lower part		3A0 15-66-036/43 H331758	3A0 15-66-038/43 H331760	3A0 15-66-040/43 H209465	3A0 15-66-043/43 H331762	3A0 15-66-045/43 H331764	
3.1		Gehäuse Unterteil Housing lower part	1.4404	3A0 15-64-037/43 H331750	3A0 15-64-039/43 H331752	3A0 15-64-041/43 H209464	3A0 15-64-044/43 H331754	3A0 15-64-046/43 H331756	3A0 15-64-048/43 H331757
		Gehäuse Unterteil Housing lower part		3A0 15-66-037/43 H331759	3A0 15-66-039/43 H331761	3A0 15-66-041/43 H209466	3A0 15-66-044/43 H331763	3A0 15-66-046/43 H331765	3A0 15-66-048/43 H331766
4	1	Tellerdichtung Schaft Seat seal for valve shaft	EPDM FDA-konform	58-33-168/93 H208440	58-33-168/93 H208440	58-33-243/93 H136203	58-33-168/93 H208440	58-33-243/93 H136203	
	1	Tellerdichtung Schaft Seat seal for valve shaft		58-33-168/33 H312726	58-33-168/33 H312726	58-33-243/33 H170179	58-33-168/33 H312726	58-33-168/33 H312726	58-33-243/33 H170179
4	1	Tellerdichtung Schaft Seat seal for valve shaft	FPM FDA-konform	58-33-168/73 H312401	58-33-168/73 H312401	58-33-243/73 H136204	58-33-168/73 H312401	58-33-243/73 H136204	
	1	Tellerdichtung Schaft Seat seal for valve shaft		58-33-168/13 H312727	58-33-168/13 H312727	58-33-243/13 H136202	58-33-168/13 H312727	58-33-243/13 H312727	58-33-243/13 H136202



Weitergabe sowie Vervielfältigung dieser Unterlage, Verwertung und Mitteilung ihres Inhalts nicht gestattet, soweit nicht schriftlich zugestanden. Verstöß verpflichtet zum Schadensersatz und kann strafrechtliche Folgen haben (Paragraf 18 UWG, Paragraf 106 UrnG). Eigentum und alle Rechte, auch für Patenterteilung und Gebrauchsmustererteilung, vorbehalten. SPX FLOW, Germany

Ersatzteilliste: spare parts list

**SWmini41 - 44, SWEmini41 - 44 FS-CU und VSM / and PSH  
DN 10, 15, 20 Schweißenden und Klemmverbindung / weld end and clamp connection  
1/2", 3/4", 1" zoll- Klemmverbindung / inch- clamp connection**

Datum:	30.10.13	14.10.14		
Name:	Trytko	Trytko		
Geprüft:				
Datum:				
Name:				
Geprüft:				



Blatt 3 von 6

**RN 01.054.815**

pos. item	Menge quantity	Beschreibung description	Material	DN10	DN15	DN20	1/2"	3/4"	1"
			material	WS-Nr. ref.-no.	WS-Nr. ref.-no.	WS-Nr. ref.-no.	WS-Nr. ref.-no.	WS-Nr. ref.-no.	WS-Nr. ref.-no.
4	2	Tellerdichtung Schaft Seat seal for valve shaft	EPDM FDA-konform	58-33-168/93 H208440	58-33-243/93 H136203	58-33-168/93 H208440	58-33-168/93 H208440		58-33-243/93 H136203
	2	Tellerdichtung Schaft Seat seal for valve shaft	HNBR FDA-konform	58-33-168/33 H312726	58-33-243/33 H170179	58-33-168/33 H312726	58-33-168/33 H312726		58-33-243/33 H170179
	2	Tellerdichtung Schaft Seat seal for valve shaft	FPM FDA-konform	58-33-168/73 H312401	58-33-243/73 H136204	58-33-168/73 H312401	58-33-168/73 H312401		58-33-243/73 H136204
	2	Tellerdichtung Schaft Seat seal for valve shaft	VMQ FDA-konform	58-33-168/13 H312727	58-33-243/13 H136202	58-33-168/13 H312727	58-33-168/13 H312727		58-33-243/13 H136202
	1	Schaft Valve shaft	1.4404	15-22-302/42 H311882	15-22-303/42 H310386	15-22-304/42 H207340	15-22-302/42 H311882	15-22-303/42 H310386	15-22-304/42 H207340
5	1	Schaft Valve shaft	1.4404	15-22-307/42 H311883	15-22-306/42 H310385	15-22-305/42 H207009	15-22-307/42 H311883	15-22-306/42 H310385	15-22-305/42 H207009
	1	Gehäusedichtung Housing seal	EPDM FDA-konform			58-33-267/93 H136432			
6	1	Gehäusedichtung Housing seal	HNBR FDA-konform			58-33-267/33 H172124			
	1	Gehäusedichtung Housing seal	FPM FDA-konform			58-33-267/73 H136431			
	2	Gehäusedichtung Housing seal	EPDM FDA-konform			58-33-267/93 H136432			
	2	Gehäusedichtung Housing seal	HNBR FDA-konform			58-33-267/33 H172124			
	2	Gehäusedichtung Housing seal	FPM FDA-konform			58-33-267/73 H136431			
	1	Schaftdichtung Shaft seal	PTFE			3A0 58-33-147/23 H176677			
7	1	Tellerdichtung Seat seal	EPDM FDA-konform			58-33-243/93 H136203			
	1	Tellerdichtung Seat seal	HNBR FDA-konform			58-33-243/33 H170179			
8	1	Tellerdichtung Seat seal	FPM FDA-konform			58-33-243/73 H136204			
	1	Tellerdichtung Seat seal							

Ersatzteilliste: spare parts list

**SWmini41 - 44, SWEmini41 - 44 FS-CU und VSM / and PSH  
DN 10, 15, 20 Schweißenden und Klemmverbindung / weld end and clamp connection  
1/2", 3/4", 1" zoll- Klemmverbindung / inch- clamp connection**

Datum:	30.10.13	14.10.14
Name:	Trytko	Trytko
Geprüft:		
Datum:		
Name:		
Geprüft:		



Blatt 4 von 6

**RN 01.054.815**

pos. item	Menge quantity	Beschreibung description	Material	DN10	DN15	DN20	1/2"	3/4"	1"
			material	WS-Nr. ref.-no.	WS-Nr. ref.-no.	WS-Nr. ref.-no.	WS-Nr. ref.-no.	WS-Nr. ref.-no.	WS-Nr. ref.-no.
8	1	Tellerdichtung Seat seal	VMIQ FDA-konform			58-33-243/13 H136202			
9	1	Führungsbuchse Bushing	PTFE+ 25% Kohle			08-01-177/23 H162714			
10	1	Laterne Yoke	1.4404			3A0 15-40-281/43 H207491			
11	4	Skt. Schraube Hex. screw	1.4301			65-01-033/15 M5x12 H78737			
12	1	Scheibe für Laterne Washer for yoke	1.4301			67-01-032/12 H208122			
13	1	Zugstange Guide rod	1.4305			15-23-849/12 H207339			
14	1	Steuerkopf Actuator	1.4301			3A0 15-32-079/13 H207492			3A0 15-32-080/13 H208025
15	4	Skt. Schraube Hex. screw	1.4301			65-01-033/15 M5x12 H78737			
	4	Skt. Schraube Hex. screw	1.4301	65-01-038/15 M5x32 H78741	65-01-030/15 M5x35 H202330	65-01-029/15 M5x40 H207018	65-01-038/15 M5x32 H78741	65-01-030/15 M5x35 H202330	65-01-029/15 M5x40 H207018
16	1	Zentrierscheibe Centering washer	1.4301			15-28-941/12 H207336			
17	1	Skt. Mutter selbstsichernd Self-locking nut	1.4301			65-50-091/15 H112373			
18	1	Abdeckhaube Cover	PA6 schwarz			15-02-172/93 H207638			
19	1	Initiator-Halterung Support for proximity switch	PA6 schwarz			15-33-936/93 H208065			
20	1	Schaltnocke Actuator screw	1.4523	08-52-288/12 H317669	08-52-289/12 H207012		08-52-288/12 H317669		08-52-289/12 H207012
21	1	O-Ring O-ring	NBR			58-06-078/83 H76943			
22	1	CU4-Smini-Adapter CU4-Smini-adapter	PA6.6 GF30 schwarz			08-48-613/93 H321989			

Ersatzteilliste: spare parts list

**SWmini41 - 44, SWEmini41 - 44 FS-CU und VSM / and PSH  
DN 10, 15, 20 Schweißenden und Klemmverbindung / weld end and clamp connection  
1/2", 3/4", 1" Zoll- Klemmverbindung / inch-clamp connection**

Datum:	30.10.13	14.10.14
Name:	Trytko	Trytko
Geprüft:		
Datum:		
Name:		
Geprüft:		



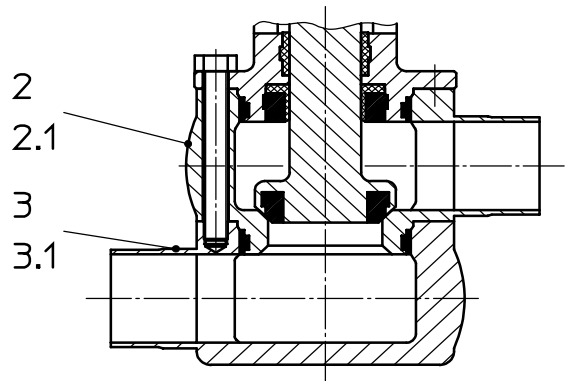
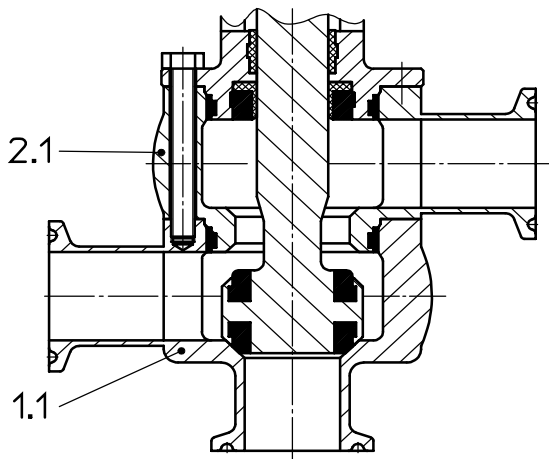
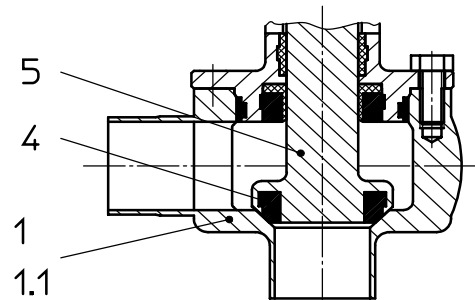
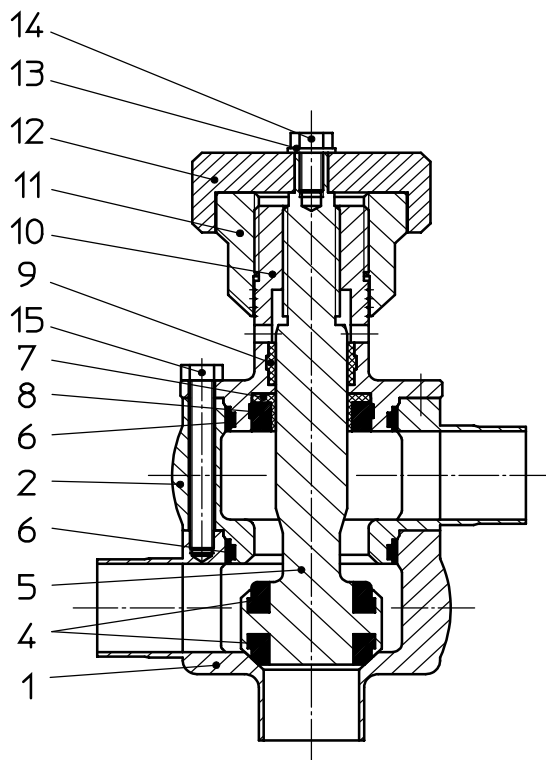
Blatt 5 von 6

**RN 01.054.815**

pos. item	Menge quantity	Beschreibung description	Material	DN10	DN15	DN20	1/2"	3/4"	1"
23	1	Zugstangenverlängerung Extension of guide rod	PA6 schwarz						
24	1	Control-Unit CU Control-Unit CU	PA6.6 GF30 schwarz						
25	2	Initiatorhalter Proximity switch holder	PA6.6 GF30 schwarz						
						15-26-070/93 H208096			
						siehe Betriebsanleitung CU see manual CU			
						15-33-918/93 H154913			
<b>Dichtungssatz / seal kit SWmini41 + 42</b> Pos. 4, 6, 7, 8, 9, 21 nur im kompletten Dichtungssatz erhältlich / item 4, 6, 7, 8, 9, 21 available as complete seal kits only									
	1	Dichtungssatz Seat kit	FPM	58-34-858/00 H319090	58-34-859/00 H328081	58-34-860/00 H325394	58-34-861/00 H311972	58-34-862/00 H311973	58-34-863/00 H325060
	1	Dichtungssatz Seat kit	EPDM	58-34-858/01 H208066	58-34-859/01 H208067	58-34-860/01 H208068	58-34-861/01 H208069	5834-862/01 H208070	58-34-863/01 H208071
	1	Dichtungssatz Seat kit	VMQ	58-34-858/02 H327211	58-34-859/02 H327212	58-34-860/02 H314144	58-34-861/02 H319100	58-34-862/02 H319101	58-34-863/02 H329475
	1	Dichtungssatz Seat kit	HNBR	58-34-858/06 H325243	58-34-859/06 H325751	58-34-860/06 H327060			
<b>Dichtungssatz / seal kit SWmini43 + 44</b> Pos. 4, 6, 7, 8, 9, 21 nur im kompletten Dichtungssatz erhältlich / item 4, 6, 7, 8, 9, 21 available as complete seal kits only									
	1	Dichtungssatz Seat kit	FPM	58-34-864/00 H322972	58-34-865/00 H323669	58-34-866/00 H311974	58-34-867/00 H311974	58-34-868/00 H311975	58-34-869/00 H208146
	1	Dichtungssatz Seat kit	EPDM	58-34-864/01 H208141	58-34-865/01 H208142	58-34-866/01 H208143	58-34-867/01 H208144	58-34-868/01 H208145	58-34-869/01 H208146
	1	Dichtungssatz Seat kit	VMQ	58-34-864/02 H327743	58-34-865/02 H325751	58-34-866/02 H327060	58-34-867/02 H329476	58-34-868/02 H345523	58-34-869/02 H345523
	1	Dichtungssatz Seat kit	HNBR	58-34-864/06 H327743	58-34-865/06 H325751	58-34-866/06 H327060	58-34-867/06 H329476	58-34-868/06 H345523	58-34-869/06 H345523



Weitergabe sowie Vervielfältigung dieser Unterlage, Verwertung und Mitteilung ihres Inhalts nicht gestattet, soweit nicht schriftlich zugestanden. Verstößt verpflichtet zum Schadensersatz und kann strafrechtliche Folgen haben (Paragraph 18 UW/G, Paragraph 106 UrhG). Eigentum und alle Rechte, auch für Patenterteilung und Gebrauchsmustereintragung, vorbehalten. SPX FLOW, Germany



Datum:	13.10.14									
Name:	Trytko									
Geprüft:										

Ersatzteilliste: spare parts list  
**SWmini41-44, SWEmini41-44 mit Handbetätigung / with manual actuation**  
**DN 10,15,20 Schweißenden und Klemmverbindung / weld end and clamp connection**  
**1/2", 3/4", 1" zoll -Klemmverbindung / inch -clamp connection**



SPX FLOW  
Germany

Blatt 1 von 5

**RN 01.054.815-1**

Weitergabe sowie Vervielfältigung dieser Unterlage, Verwertung und Mitteilung ihres Inhalts nicht gestattet, soweit nicht schriftlich zugestanden. Verstoß verpflichtet zum Schadensersatz und kann strafrechtliche Folgen haben (Paragraf 18 UWG, Paragraph 106 UrhG). Eigentum und alle Rechte, auch für Patenterteilung und Gebrauchsmustereintragung, vorbehalten. SPX FLOW, Germany

**Ersatzteilliste: spare parts list**

**SWmini41 - 44, SWEmini41 - 44 mit Handbetätigung / with manual actuation  
DN 10, 15, 20 Schweißenden und Klemmverbindung / weld end and clamp connection  
1/2", 3/4", 1" Zoll- Klemmverbindung / inch- clamp connection**

Datum:	13.10.14
Name:	Trytko
Geprüft:	
Datum:	
Name:	
Geprüft:	
Blatt 2 von 5	
<b>RN 01.054.815-1</b>	

pos. item	Menge quantity	Beschreibung description	Material	DN10	DN15	DN20	1/2"	3/4"	1"
				WS-Nr. ref.-no.	WS-Nr. ref.-no.	WS-Nr. ref.-no.	WS-Nr. ref.-no.	WS-Nr. ref.-no.	WS-Nr. ref.-no.
1	1	Gehäuse Housing	1.4404	3A0 15-60-193/43 H311874	3A0 15-60-194/43 H310384	3A0 15-60-195/43 H207011	3A0 15-60-193/43 H311874	3A0 15-60-194/43 H310384	
	1	Gehäuse Housing		3A0 15-61-193/43 H311875	3A0 15-61-194/43 H310383	3A0 15-61-195/43 H208117	3A0 15-61-193/43 H311875	3A0 15-61-194/43 H310383	
1.1	1	Gehäuse Housing	1.4404	3A0 15-60-189/43 H311876	3A0 15-60-190/43 H310492	3A0 15-60-191/43 H207886	3A0 15-60-239/43 H325653	3A0 15-60-240/43 H326796	3A0 15-60-241/43 H207730
	1	Gehäuse Housing		3A0 15-61-189/43 H311877	3A0 15-61-190/43 H310489	3A0 15-61-191/43 H208116	3A0 15-61-239/43 H325893	3A0 15-61-240/43 H330857	3A0 15-61-241/43 H208118
2	1	Gehäuse Oberteil Housing upper part	1.4404	3A0 15-62-182/43 H311878	3A0 15-62-183/43 H310382	3A0 15-62-185/43 H207010	3A0 15-62-182/43 H311878	3A0 15-62-183/43 H310382	
	1	Gehäuse Oberteil Housing upper part		3A0 15-63-181/43 H311879	3A0 15-63-183/43 H310381	3A0 15-63-185/43 H208120	3A0 15-63-181/43 H311879	3A0 15-63-183/43 H310381	
2.1	1	Gehäuse Oberteil Housing upper part	1.4404	3A0 15-62-193/43 H311880	3A0 15-62-194/43 H310490	3A0 15-62-195/43 H207887	3A0 15-62-196/43 H325652	3A0 15-62-197/43 H326797	3A0 15-62-184/43 H207731
	1	Gehäuse Oberteil Housing upper part		3A0 15-63-180/43 H311881	3A0 15-63-182/43 H310491	3A0 15-63-187/43 H208121	3A0 15-63-196/43 H325890	3A0 15-63-197/43 H331755	3A0 15-63-184/43 H208119
3		Gehäuse Unterteil Housing lower part	1.4404	3A0 15-64-036/43 H331749	3A0 15-64-038/43 H331751	3A0 15-64-040/43 H209463	3A0 15-64-043/43 H331753	3A0 15-64-045/43 H331755	
		Gehäuse Unterteil Housing lower part		3A0 15-66-036/43 H331758	3A0 15-66-038/43 H331760	3A0 15-66-040/43 H209465	3A0 15-66-043/43 H331762	3A0 15-66-045/43 H331764	
3.1		Gehäuse Unterteil Housing lower part	1.4404	3A0 15-64-037/43 H331750	3A0 15-64-039/43 H331752	3A0 15-64-041/43 H209464	3A0 15-64-044/43 H331754	3A0 15-64-046/43 H331756	3A0 15-64-048/43 H331757
		Gehäuse Unterteil Housing lower part		3A0 15-66-037/43 H331759	3A0 15-66-039/43 H331761	3A0 15-66-041/43 H209466	3A0 15-66-044/43 H331763	3A0 15-66-046/43 H331765	3A0 15-66-048/43 H331766
4	1	Tellerdichtung Schaft Seat seal for valve shaft	EPDM FDA-konform	58-33-168/93 H208440	58-33-168/93 H208440	58-33-243/93 H136203	58-33-168/93 H208440	58-33-243/93 H136203	
	1	Tellerdichtung Schaft Seat seal for valve shaft		58-33-168/33 H312726	58-33-168/33 H312726	58-33-243/33 H170179	58-33-168/33 H312726	58-33-168/33 H312726	58-33-243/33 H170179
4	1	Tellerdichtung Schaft Seat seal for valve shaft	FPM FDA-konform	58-33-168/73 H312401	58-33-168/73 H312401	58-33-243/73 H136204	58-33-168/73 H312401	58-33-243/73 H136204	
	1	Tellerdichtung Schaft Seat seal for valve shaft		58-33-168/13 H312727	58-33-168/13 H312727	58-33-243/13 H136202	58-33-168/13 H312727	58-33-168/13 H312727	58-33-243/13 H136202



**Ersatzteilliste: spare parts list**  
**SWmini41 - 44, SWEmini41 - 44 mit Handbetätigung / with manual actuation**  
**DN 10, 15, 20 Schweißenden und Klemmverbindung / weld end and clamp connection**  
**1/2", 3/4", 1" Zoll- Klemmverbindung / inch- clamp connection**

pos. item	Menge quantity	Beschreibung description	Material	DN10		DN15		DN20		1/2"		3/4"		1"	
				WS-Nr. ref.-no.	WS-Nr. ref.-no.	WS-Nr. ref.-no.	WS-Nr. ref.-no.	WS-Nr. ref.-no.	WS-Nr. ref.-no.	WS-Nr. ref.-no.	WS-Nr. ref.-no.	WS-Nr. ref.-no.	WS-Nr. ref.-no.	WS-Nr. ref.-no.	
4	2	Tellerdichtung Schaft Seat seal for valve shaft	EPDM FDA-konform	58-33-168/93 H208440	58-33-243/93 H136203	58-33-168/93 H208440	58-33-243/93 H136203	58-33-168/93 H208440	58-33-243/93 H136203	58-33-168/93 H208440	58-33-243/93 H136203				
	2	Tellerdichtung Schaft Seat seal for valve shaft	HNBR FDA-konform	58-33-168/33 H312726	58-33-243/33 H170179	58-33-168/33 H312726	58-33-243/33 H170179	58-33-168/33 H312726	58-33-243/33 H170179	58-33-168/33 H312726	58-33-243/33 H170179				
	2	Tellerdichtung Schaft Seat seal for valve shaft	FPM FDA-konform	58-33-168/73 H312401	58-33-243/73 H136204	58-33-168/73 H312401	58-33-243/73 H136204	58-33-168/73 H312401	58-33-243/73 H136204	58-33-168/73 H312401	58-33-243/73 H136204				
	2	Tellerdichtung Schaft Seat seal for valve shaft	VMQ FDA-konform	58-33-168/13 H312727	58-33-243/13 H136202	58-33-168/13 H312727	58-33-243/13 H136202	58-33-168/13 H312727	58-33-243/13 H136202	58-33-168/13 H312727	58-33-243/13 H136202				
5	1	Schaft Valve shaft	1.4404	15-22-212/42 H330082	15-22-213/42 H330083	15-22-212/42 H330082	15-22-213/42 H330083	15-22-214/42							
	1	Schaft Valve shaft	1.4404												
6	1	Gehäusedichtung Housing seal	EPDM FDA-konform					58-33-267/93 H136432							
	1	Gehäusedichtung Housing seal	HNBR FDA-konform					58-33-267/33 H172124							
	1	Gehäusedichtung Housing seal	FPM FDA-konform					58-33-267/73 H136431							
	2	Gehäusedichtung Housing seal	EPDM FDA-konform					58-33-267/93 H136432							
	2	Gehäusedichtung Housing seal	HNBR FDA-konform					58-33-267/33 H172124							
	2	Gehäusedichtung Housing seal	FPM FDA-konform					58-33-267/73 H136431							
7	1	Schaftdichtung Shaft seal	PTFE					3A0 58-33-147/23 H176677							
	1	Tellerdichtung Seat seal	EPDM FDA-konform					58-33-243/93 H136203							
8	1	Tellerdichtung Seat seal	HNBR FDA-konform					58-33-243/33 H170179							
	1	Tellerdichtung Seat seal	FPM FDA-konform					58-33-243/73 H136204							



Blatt 3 von 5  
**RN 01.054.815-1**

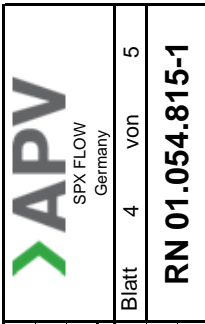
Datum: 13.10.14  
 Name: Trytko  
 Geprüft:  
 Datum:  
 Name:  
 Geprüft:

Ersatzteilliste: spare parts list

**SWmini41 - 44, SWEmini41 - 44 mit Handbetätigung / with manual actuation**  
**DN 10, 15, 20 Schweißenden und Klemmverbindung / weld end and clamp connection**  
**1/2", 3/4", 1" Zoll- Klemmverbindung / inch- clamp connection**

Datum:	13.10.14
Name:	Trytko
Geprüft:	
Datum:	
Name:	
Geprüft:	

Blatt	4	von	5
<b>RN 01.054.815-1</b>			



pos. item	Menge quantity	Beschreibung description	Material	DN10	DN15	DN20	1/2"	3/4"	1"
			material	WS-Nr. ref.-no.	WS-Nr. ref.-no.	WS-Nr. ref.-no.	WS-Nr. ref.-no.	WS-Nr. ref.-no.	WS-Nr. ref.-no.
8	1	Tellerdichtung Seat seal	VMIQ FDA-konform			58-33-243/13 H136202			
9	1	Führungsbuchse Bushing	KETRON PEEK			08-01-177/23 H162714			
10	1	Laternen Handbetätigung Yoke manual actuation	1.4404			3A0 15-40-188/43 H325559			
11	1	Konterrad Handbetätigung Counter wheel manual actuation	1.4301			15-28-257/17 H325563			
12	1	Stellrad Handbetätigung Wheel manual actuation	1.4301			15-28-258/17 H325562			
13	1	Scheibe Washer	1.4301			67-01-014/13 H79587			
14	1	Skt. Schraube Hex. screw	1.4301			65-01-031/13 M5x10 H78734			
15	4	Skt. Schraube Hex. screw	1.4301			65-01-033/15 M5x12 H78737			
	4	Skt. Schraube Hex. screw	1.4301	65-01-038/15 M5x32 H78741	65-01-030/15 M5x35 H202330	65-01-029/15 M5x40 H207018	65-01-038/15 M5x32 H78741	65-01-030/15 M5x35 H202330	65-01-029/15 M5x40 H207018
<b>Dichtungssatz / seal kit SWmini41 + 42</b>									
Pos. 4, 6, 7, 8, 9 nur im kompletten Dichtungssatz erhältlich / item 4, 6, 7, 8, 9 available as complete seal kits only									
	1	Dichtungssatz Seat kit	FPM	58-36-886/00	58-36-887/00	58-36-888/00	58-36-886/00	58-36-887/00	58-36-888/00
	1	Dichtungssatz Seat kit	EPDM	58-36-886/01	58-36-887/01	58-36-888/01	58-36-886/01	58-36-887/01	58-36-888/01
	1	Dichtungssatz Seat kit	VMIQ	58-36-886/02	58-36-887/02	58-36-887/02	58-36-886/02	58-36-887/02	58-36-887/02
	1	Dichtungssatz Seat kit	HNBR	58-36-886/06	58-36-887/06	58-36-888/06	58-36-886/06	58-36-887/06	58-36-888/06



Ersatzteilliste: spare parts list

**SWEmini41 - 44, SWEmini41 - 44 mit Handbetätigung / with manual actuation**  
**DN 10, 15, 20 Schweißenden und Klemmverbindung / weld end and clamp connection**  
**1/2", 3/4", 1" Zoll- Klemmverbindung / inch- clamp connection**

Datum: 13.10.14

Name: Trytko

Geprüft:

Datum:

Name:

Geprüft:

DN20

WS-Nr. ref.-no.

1/2"

WS-Nr. ref.-no.

3/4"

WS-Nr. ref.-no.

1"

WS-Nr. ref.-no.



Blatt 5 von 5

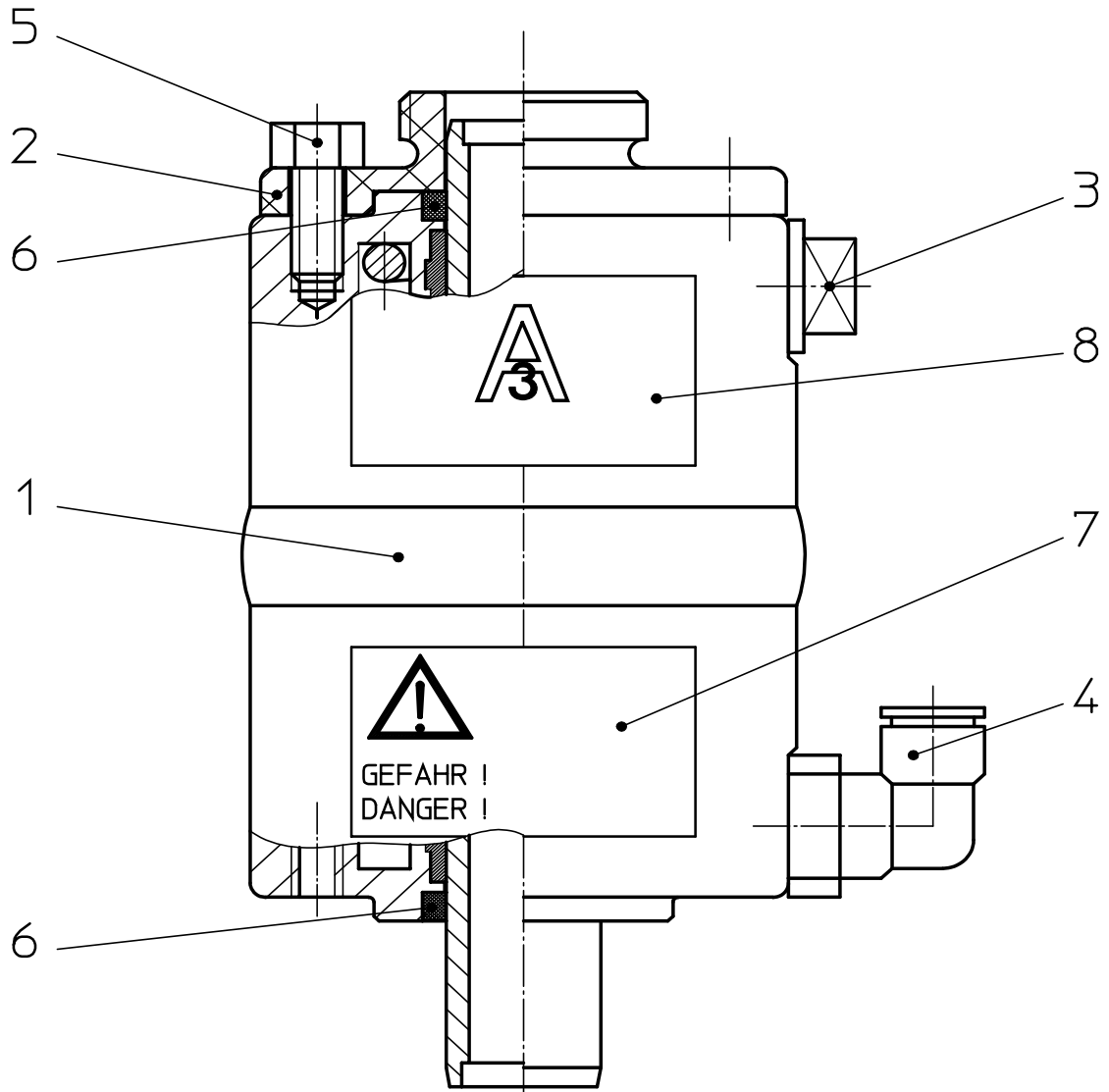
**RN 01.054.815-1**

pos. item	Menge quantity	Beschreibung description	Material	DN10	DN15	DN20	1/2"	3/4"	1"
<b>Dichtungssatz / seal kit SWEmini43 + 44</b>									
Pos. 4, 6, 7, 8, 9 nur im kompletten Dichtungssatz erhältlich / item 4, 6, 7, 8, 9 available as complete seal kits only									
	1	Dichtungssatz Seat kit	FPM	58-36-889/00	58-36-890/00	58-36-891/00	58-36-889/00	58-36-890/00	58-36-891/00
	1	Dichtungssatz Seat kit	EPDM	58-36-889/01	58-36-890/01	58-36-891/01	58-36-889/01	58-36-890/01	58-36-891/01
	1	Dichtungssatz Seat kit	VMQ	58-36-889/02	58-36-890/02	58-36-891/02	58-36-889/02	58-36-890/02	58-36-891/02
	1	Dichtungssatz Seat kit	HNBR	58-36-889/06	58-36-890/06	58-36-891/06	58-36-889/06	58-36-890/06	58-36-891/06

<b>Dichtungssatz / seal kit SWEmini41 - 44</b>									
Pos. 4, 6, 7, 8, 9 nur im kompletten Dichtungssatz erhältlich / item 4, 6, 7, 8, 9 available as complete seal kits only									
pos. item	Menge quantity	Beschreibung description	Material	DN10	DN15	DN20	1/2"	3/4"	1"
	1	Dichtungssatz Seat kit	FPM						
	1	Dichtungssatz Seat kit	EPDM						
	1	Dichtungssatz Seat kit	VMQ						
	1	Dichtungssatz Seat kit	HNBR						



Weitergabe sowie Vervielfältigung dieser Unterlage, Verwertung und Mitteilung ihres Inhalts nicht gestattet, soweit nicht schriftlich zugestanden. Verstößt verpflichtet zum Schadensersatz und kann strafrechtliche Folgen haben (Paragraph 18 UWG, Paragraph 106 UrhG). Eigentum und alle Rechte, auch für Patenterteilung und Gebrauchsmustereintragung, vorbehalten. SPX FLOW, Germany



Datum:	04.11.13																			
Name:	Trytko																			
Geprüft:																				

Ersatzteilliste: spare parts list  
**Steuerkopf SWmini4 ø50 / Actuator SWmini4 ø50**  
**Luftanschluss / air connection: 6mm und / and 1/4" OD**



SPX FLOW  
Germany

Blatt 1 von 2

**RN 01.054.88**

Weitergabe sowie Vervielfältigung dieser Unterlage, Verwertung und Mitteilung ihres Inhalts nicht gestattet, soweit nicht schriftlich zugestanden. Verstoß verpflichtend zum Schadensersatz und kann strafrechtliche Folgen haben (Paragraf 18 UWG, Paragraf 106 UrhG). Eigentum und alle Rechte, auch für Patenterteilung und Gebrauchsmustereintragung, vorbehalten. SPX FLOW, Germany

Ersatzteilliste: spare parts list

**Steuerkopf SWmini4 ø50 / Actuator SWmini4 ø50**  
**Luftanschluss / air connection: 6mm und / and 1/4" OD**

pos. item	Menge quantity	Beschreibung description	Material	Luftanschluss		WS-Nr. ref.-no.	WS-Nr. ref.-no.	WS-Nr. ref.-no.	WS-Nr. ref.-no.
				6mm	1/4" OD				
		Steuerkopf FS Actuator FS	1.4301	3A0 15-32-079/13 H207492	3A0 15-32-080/13 H208025				
		Steuerkopf FH Actuator FH	1.4301	3A0 15-32-081/13 H311418	3A0 15-32-082/13 H311419				
		Steuerkopf L/L Actuator air/air	1.4301	3A0 15-32-078/13 H208662	3A0 15-32-076/13 H325605				
		Steuerkopf Schweißteil Actuator welded	1.4301	15-32-079/12 H207546					
1	1	Steuerkopf Schweißteil L/L Actuator welded air/air	1.4301	15-32-078/12 H208663					
2	1	Deckel Cover	PA6-schwarz	15-02-173/93 H207544					
3	1	Entlüftungsstopfen Venting plug	PE-Hard yellow	08-60-005/93 H16218					
		W-Verschraubung schwenkbar Angular union, slewable	PA-1.4301	08-60-750/93 H208825	08-60-811/93 H312732				
4	2	W-Verschraubung schwenk.-Steuerkopf L/L Angular union, slewable-actuator air/air	PA-1.4301	08-60-750/93 H208825	08-60-811/93 H312732				
5	4	Skt. Schraube Hex. Screw	1.4301	65-01-033/15 M5x12 H78737					
6	2	Quadrang Quadrang	NBR	58-01-003/83 H207521					
7	1	Warnhinweis für Steuerkopf SW4mini Warning hint for actuator SWmini4	Klebefolie	08-29-295/93 H208072					
8	1	Aufkleber 3A-Symbol SW4 und SWmini4 Adhesive 3A-symbol SW4 and SWmini4	Klebefolie transparent	08-29-001/93 H207960					

Datum: 04.11.13 19.04.17  
Name: Trytko Sunder  
Geprüft:

Datum: Blatt 2 von 2  
Name:  
Geprüft: **RN 01.054.88**





# APV DELTA SWmini4

SINGLE SEAT VALVE DN 10, 15, 20

# SPXFLOW

## SPX FLOW

### Design Center

Gottlieb-Daimler-Straße 13  
D-59439 Holzwickede, Germany  
P: (+49) (0) 2301-9186-0  
F: (+49) (0) 2301-9186-300

## SPX FLOW

### Production

Stanisława Jana Rolbieskiego 2  
PL- Bydgoszcz 85-862, Poland  
P: (+48) 52 566 76 00  
F: (+48) 52 525 99 09

SPX FLOW reserves the right to incorporate the latest design and material changes without notice or obligation.

Design features, materials of construction and dimensional data, as described in this manual, are provided for your information only and should not be relied upon unless confirmed in writing. Please contact your local sales representative for product availability in your region. For more information visit [www.spxflow.com](http://www.spxflow.com).

ISSUED 04/2020 - Translation of Original Manual  
COPYRIGHT ©2020 SPX FLOW, Inc.