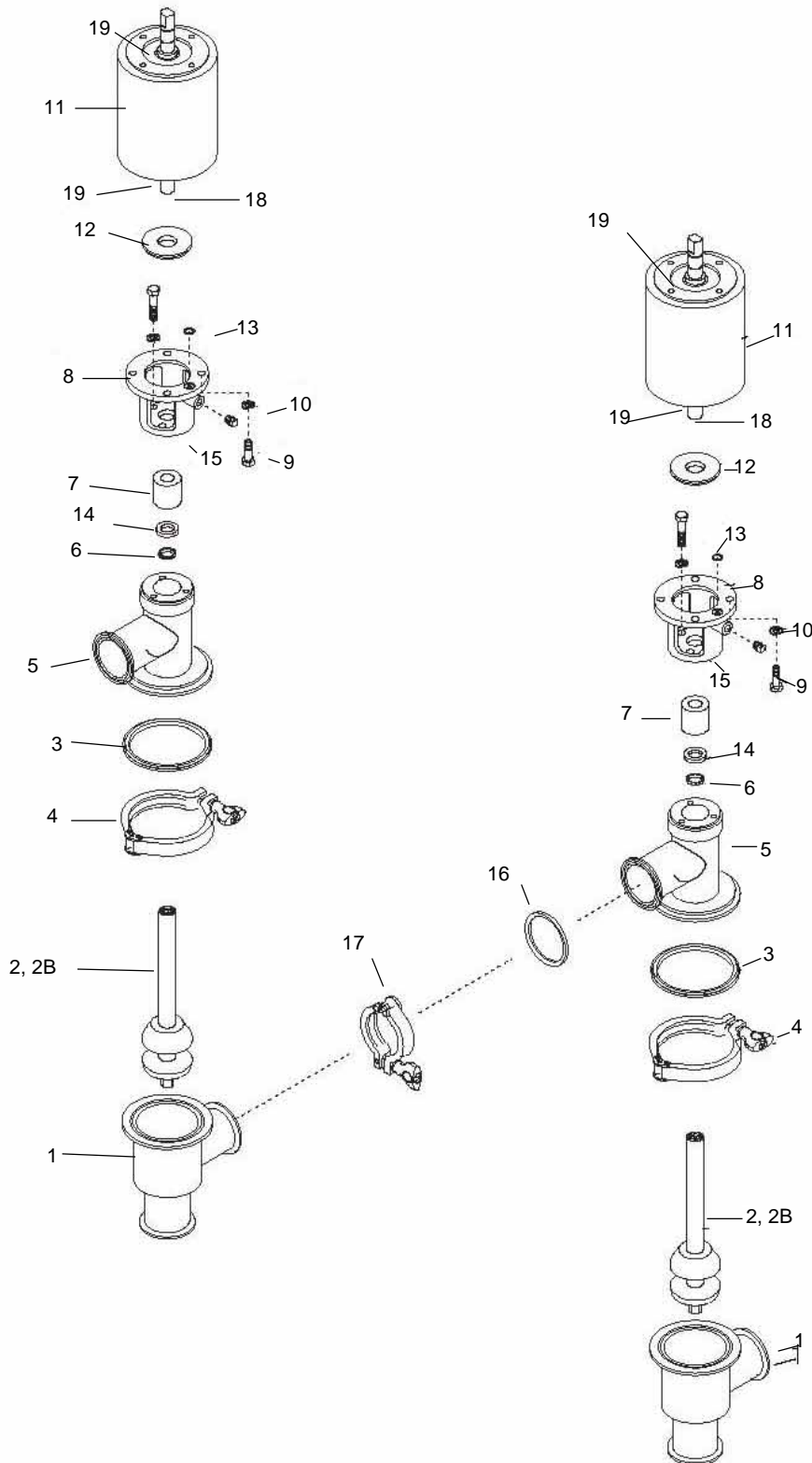


762-227M Flow Diversion Valve



762-227M Flow Diversion Valve

Pos.	Qty.	Denomination	1½"	2"	2½"	3"
1	2	Lower body	770106	770107	770111	770116
2	2	Stem, LP, BUNA	9634055829	9634055830	9634055831	9634055832
2	2	Stem, LP, EPDM	773147	772835	773136	772833
2	2	Stem, LP, SFY	773158	9634050983	773137	773142
2	2	TR valve plug	770338	770343	770349	770354
2	2	TR2 valve plug	9634052007	9634054775	9634052001	9634052008
2B ▲	1	TR seat upper	751525	750943	750947	751268
2B ▲	1	TR seat lower	750943	750943	750947	751268
2B △	1	TR2 seat upper	752096	9634050833	752100	752102
2B △	1	TR2 seat lower	9634050833	9634050833	752100	752102
3 ●▲△	1	Body gasket BUNA	750376	750376	750385	750391
3 ●▲△	1	Body gasket EPDM	750383	750383	750390	750400
3 ●▲△	1	Body gasket SFY	750382	750382	750389	750398
4	2	Clamp	270266	270266	270267	212211
5	2	Upper body	770119	770120	770121	770122
6 ●▲△	1	O-ring stem BUNA	755370	755370	755370	755370
6 ●▲△	1	O-ring stem EPDM	750132	750132	750132	750132
6 ●▲△	1	O-ring stem SFY	750077	750077	750077	750077
7 ●▲△	1	Bushing	763362	763362	763362	763362
8	2	Yoke	750224	750224	750224	750224
9	14	Screw	189773	189773	189773	189773
10	14	Lockwasher	189962	189962	189962	189962
11	2	Actuator	750201	750201	750201	750201
12●▲△	1	Packing retainer	751659	751659	751659	751659
13●▲△	2	O-ring	755388	755388	755388	755388
14	2	Seal washer	750361	750361	750361	750361
15	1	Vented plug	181256	181256	181256	181256
16	1	Gasket BUNA	298452	298453	298454	298455
16	1	Gasket EPDM	290044	290043	290048	290036
16	1	Gasket SFY	290022	290030	290040	290049
17	1	Clamp	212195	212196	212197	212198
18●▲△	1	Pin	750338	750338	750338	750338
19●▲△	2	Packing	755461	755461	755461	755461

- included in Service Kits
- ▲ included in TR Service Kits
- △ included in TR2 Service Kits

	1½"	2"	2½"	3"
● Buna	9613990327	9613990327	9613990508	9613990330
● EPDM	9613990328	9613990328	9613990509	9613990331
● SFY	9613990329	9613990329	9613990510	9613990332
▲ Buna	9613990106	9613990109	9613990112	9613990115
▲ EPDM	9613990107	9613990110	9613990113	9613990116
▲ SFY	9613990108	9613990111	9613990114	9613990117
△ Buna	9613990575	9613990578	9613990581	9613990584
△ EPDM	9613990576	9613990579	9613990582	9613990585
△ SFY	9613990577	9613990580	9613990583	9613990586

NOTE: 2 service kits required per valve!

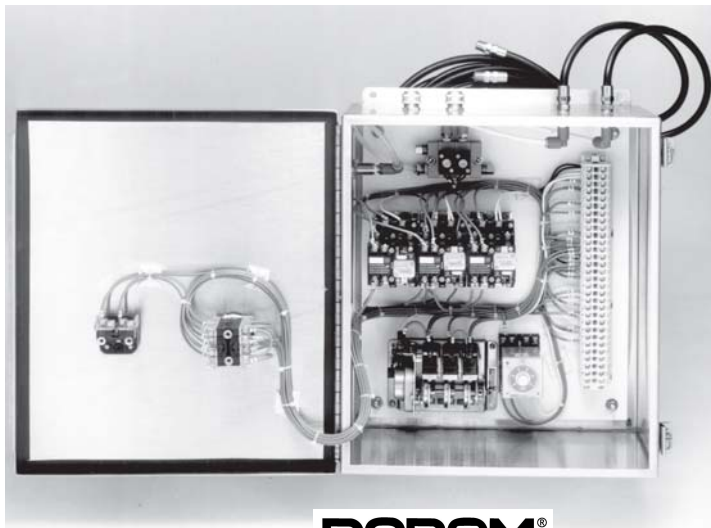
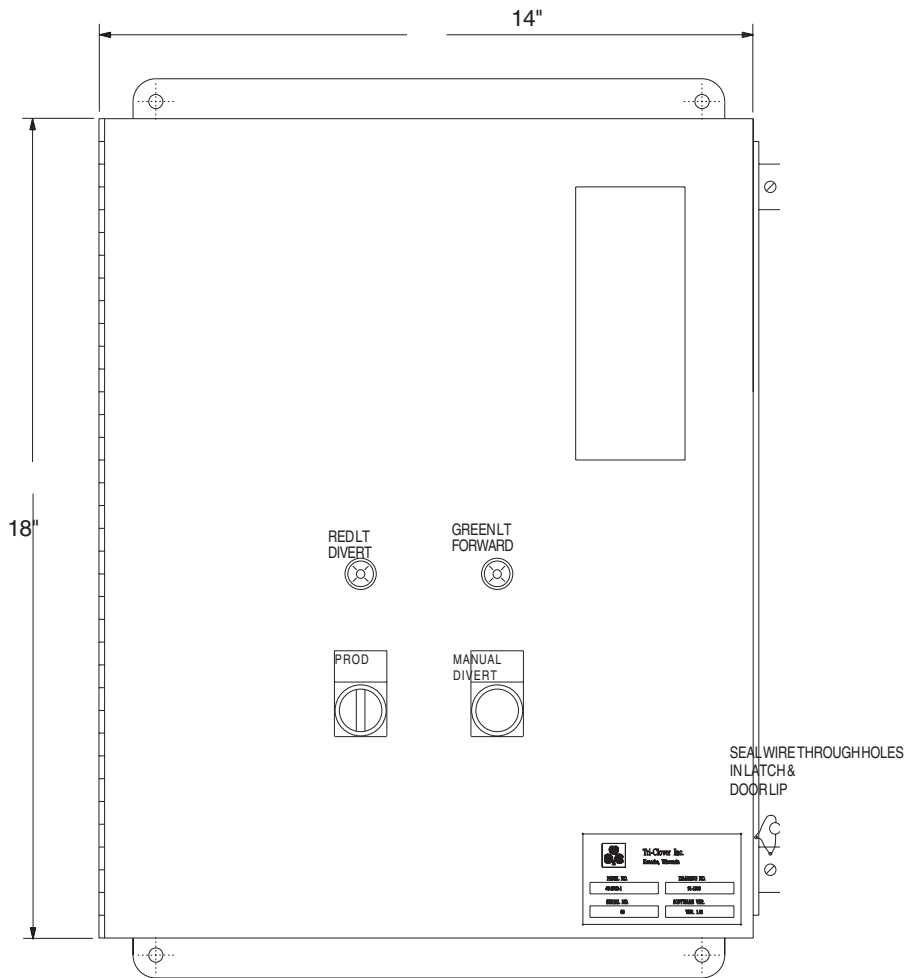
Test Gages

- 84-3 Inspection gage for 762-227
- 84-5-A Inspection gage for 762MRAL 1-1/2-3"
- 84-5-B Inspection gage for 762MRAL 4"

762979 Panel without Solenoid

Item Number
48-2762-1

Part Number
762979



762456 Panel with Solenoid

Item Number
48-2762-2

Part Number
762456

