



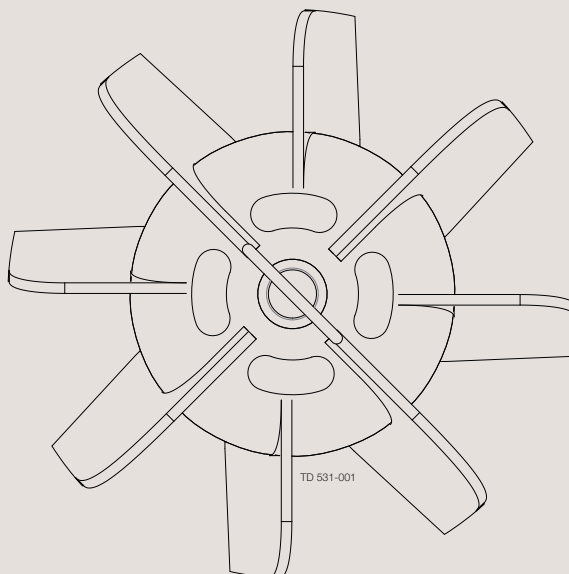
RODEM[®]

PROCESS EQUIPMENT

www.rodem.com 800-543-7312

Spare Parts

Magnetic Mixer MM338



ESE02448-EN3

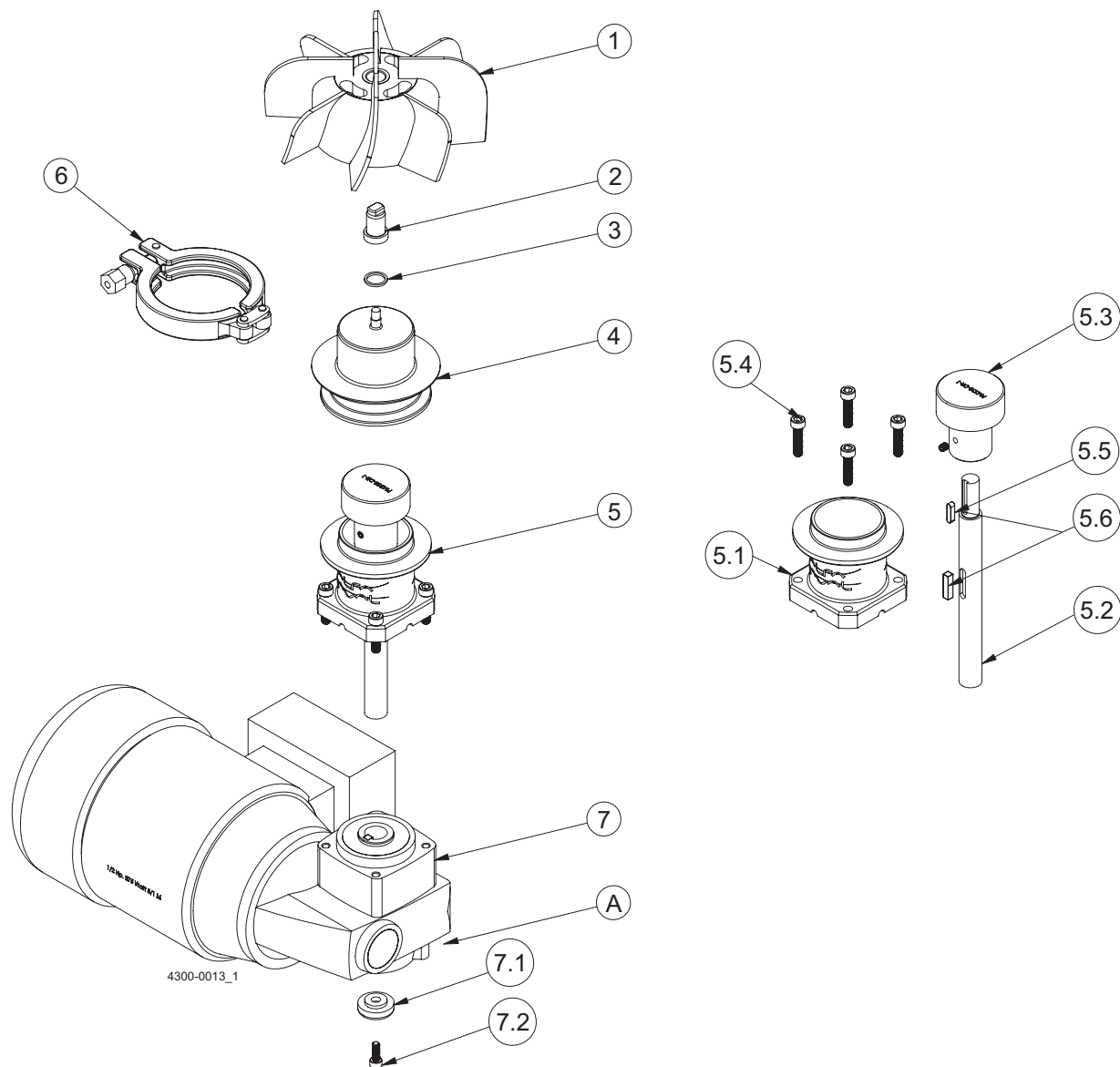
2015-02

Original manual

The information herein is correct at the time of issue but may be subject to change without prior notice

1. Component Drawings and Lists of Parts, Magnetic Mixer MM338 4

-2 and -3 versions



Pos. A: No fixing element cover = version 2 or 3

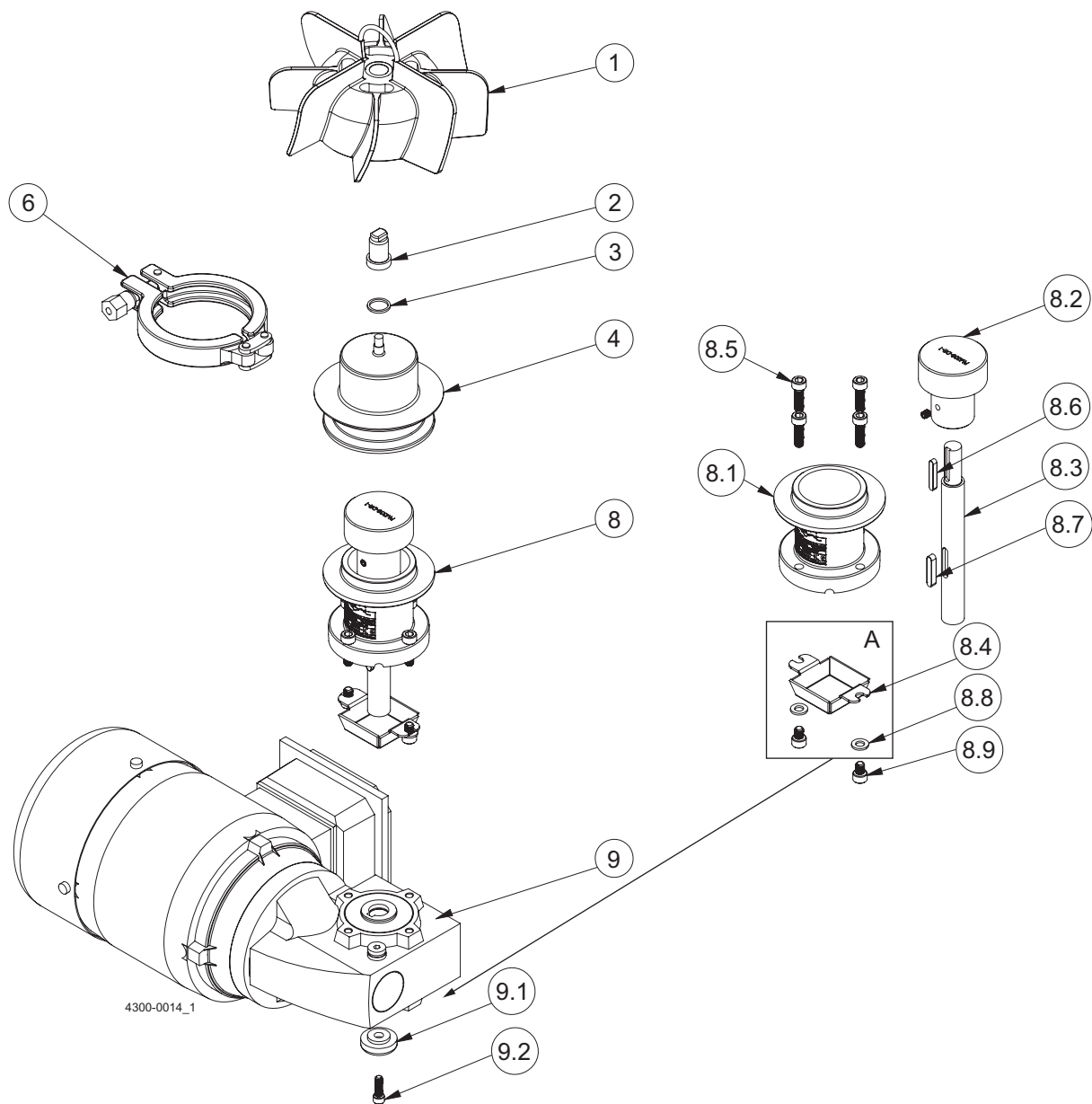
Component Drawings and Lists of Parts, Magnetic Mixer MM338

Parts list, Magnetic Mixer MM338 -2 and -3 versions

Pos	Qty	Denomination	Item no.	Size
1*	□	- IMP, PM338-4"-HSA IMPELLER, new (20 Ra max)	9634086378	4
	□	- IMP, PM338-6"-HSA IMPELLER, new (20 Ra max)	9634086026	6
	□	- IMP, PM338-4"-HSA-EP, new (20 Ra max plus Electro polish) ...	9634086513	4
	□	- IMP, PM338-6"-HSA-EP, new (20 Ra max plus Electro polish) ...	9634086514	6
	□	- MM338-IMPFB-REPAIR, R&R of female bearing	9634086486	All
	□	- MM338-IMPFB-REPAIR-EP, R&R of female bearing +EP	9634089579	All
2		- Male Bearing, YTZP (Zirconia Ceramic)	9634086107	-
3		- Male Bearing Gasket, ISOLAST® PerFluoro Elastomer	9634086109	-
4		- Weld Plate, 316L Stainless Steel	9634086405	-
5	□	- Drive unit kit, see table below		
5.1	□	- DU flange, see table below		-
5.2	□	- Axle, see table below		-
5.3		- Drive Rotor		-
5.4		- SHCS, Stainless Steel		M6x25
5.5		- Key	N/A	M4x16
5.6		- Key, supplied with gear motor	N/A	M5x20
6		- Clamp		2.5"
7	□	- Gear Motor code A, 3 X 230/460 VAC 60Hz	9634086551	0.5Hp
	□	- Gear Motor code B, 3 X 332/575 VAC 60Hz	9634086552	0.5Hp
	□	- Gear Motor code C, 3 X 205/355 VAC 50Hz (OBS)	9634086526	0.5Hp
	□	- Gear Motor code D, 3 X 230/400 VAC 50Hz	9634086553	0.5Hp
7.1		- Fixing Element, supplied with gear motor	N/A	-
7.2		- SHCS, supplied with gear motor	N/A	M5

Version	Pos. 5	Pos. 5.1	Pos. 5.2
	Drive unit kit	DU flange	Axle
-2, Stainless steel	9634086468	9634086455	9634086081
-3, extended version	9634086557	9634086560	9634086559

-6 and -7 versions



Pos. A: Fixing element cover = version 6 or 7

Component Drawings and Lists of Parts, Magnetic Mixer MM338

Parts list, Magnetic Mixer MM338

-6 and -7 versions

Pos	Qty	Denomination	Item no.	Size
1*	□	- IMP, PM338-4"-HSA IMPELLER, new (20 Ra max)	9634086378	4
	□	- IMP, PM338-6"-HSA IMPELLER, new (20 Ra max)	9634086026	6
	□	- IMP, PM338-4"-HSA-EP, new (20 Ra max plus Electro polish) ...	9634086513	4
	□	- IMP, PM338-6"-HSA-EP, new (20 Ra max plus Electro polish) ...	9634086514	6
	□	- MM338-IMPFB-REPAIR, R&R of female bearing	9634086486	All
	□	- MM338-IMPFB-REPAIR-EP, R&R of female bearing +EP	9634089579	All
2		- Male Bearing, YTZP (Zirconia Ceramic)	9634086107	-
3		- Male Bearing Gasket, ISOLAST® PerFluoro Elastomer	9634086109	-
4		- Weld Plate, 316L Stainless Steel	9634086405	-
8	□	- Drive unit kit, see table below		-
8.1	□	- DU flange, see table below		-
8.2		- Drive Rotor		-
8.3	□	- Axle, see table below		-
8.4	□	- Fixing element guard, Stainless Steel		-
8.5		- SHCS, Stainless Steel		M6x20
8.6		- Key, supplied with Axle	N/A	M4x25
8.7		- Key, supplied with Axle	N/A	3/16x1
8.8		- Washer, Stainless Steel		M6
8.9		- SHCS, Stainless Steel		M6x8
9	□	- Gear Motor code A, 3 X 230/460 VAC 60Hz	9634093414	0.5Hp
	□	- Gear Motor code B, 3 X 332/575 VAC 60Hz	9634093416	0.5Hp
	□	- Gear Motor code D, 3 X 230/400 VAC 50Hz	9634093418	0.5Hp
9.1		- Fixing element, supplied with gear motor	N/A	
9.2		- SHCS, supplied with gear motor	N/A	

Version	Pos. 8	Pos. 8.1	Pos. 8.3
	Drive unit kit	DU flange	Axle
-6, Stainless steel	9634093412	9634093288	9634093286
-7, extended version	9334093520	9634093287	9634093285

Identification of Magnetic Mixer version

All versions

The version of the Magnetic Mixer can be identified from the article number of the complete mixer. We refer to order acknowledgement or delivery note on which the article number is stated.

Version 6 and 7

In addition to the article number, the version can also be identified from the description code on the plaque (example version 6):



Article number overview

Version 2 & 3

Version 2	Version 3
Item numbers, complete mixer	Item numbers, complete mixer
9614063809	9614063833
9614063810	9614063835
9614063813	(Extended flange)
9614063814	
9614063817	
9614063818	
9614063821	
9614063822	
9614063825	
9614063826	
9614063829	
9614063830	

Note:
- Serial # is stated on the impeller

Version 6 & 7

Version 6	Version 7
Item numbers	Item number
9614303401	9614307701
9614303402	(Extended flange)
9614303403	
9614303404	
9614303405	
9614303406	
9614303407	
9614303408	
9614303409	
9614303410	
9614303411	
9614303412	

Note:
- Serial # is stated on the plaque

How to contact Alfa Laval

Contact details for all countries are continually updated on our website.

Please visit www.alfalaval.com to access the information directly.

© Alfa Laval Corporate AB

This document and its contents is owned by Alfa Laval Corporate AB and protected by laws governing intellectual property and thereto related rights. It is the responsibility of the user of this document to comply with all applicable intellectual property laws. Without limiting any rights related to this document, no part of this document may be copied, reproduced or transmitted in any form or by any means (electronic, mechanical, photocopying, recording, or otherwise), or for any purpose, without the expressed permission of Alfa Laval Corporate AB. Alfa Laval Corporate AB will enforce its rights related to this document to the fullest extent of the law, including the seeking of criminal prosecution.