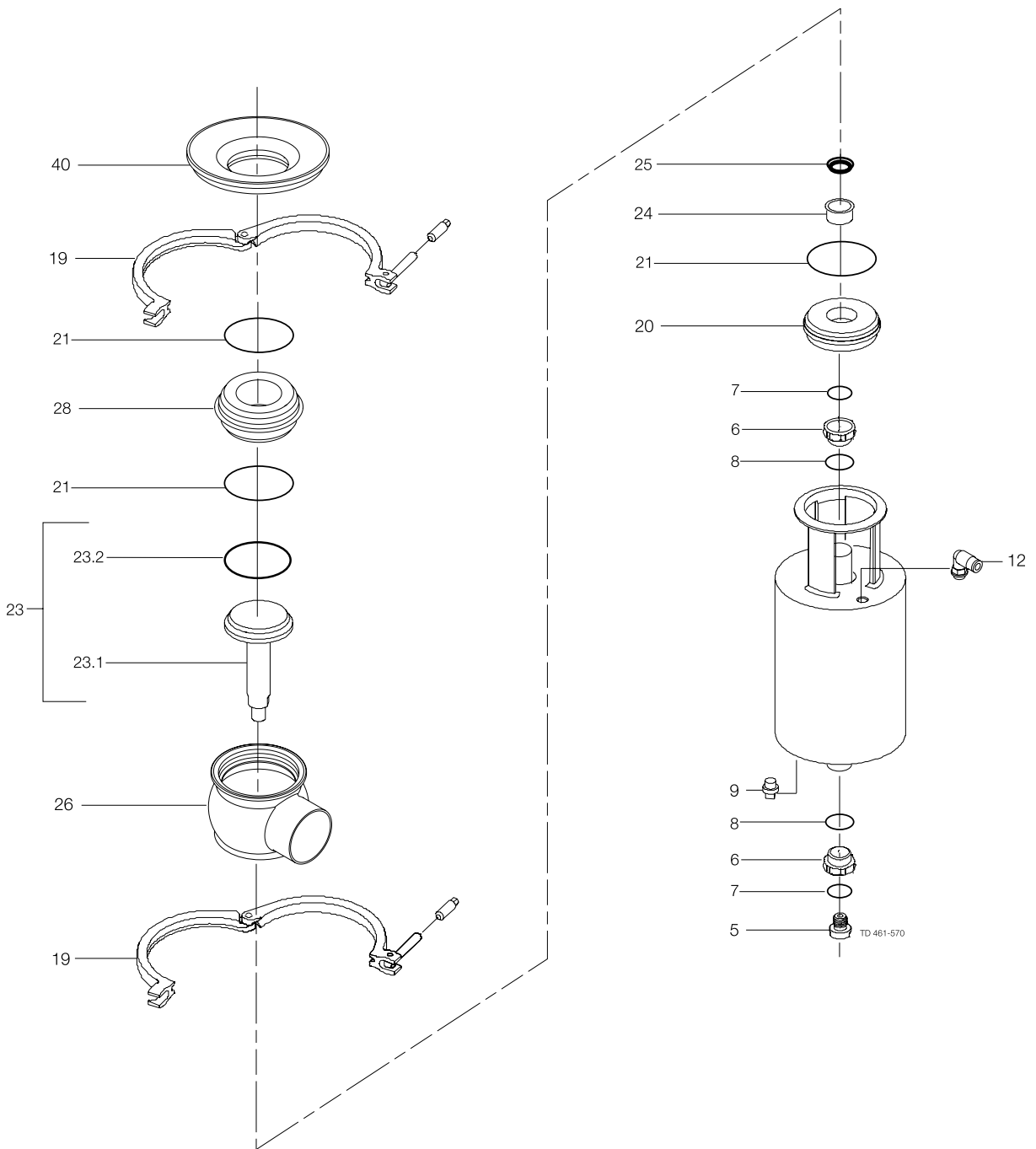


6.1 Unique Single Seat Valve  
Tank Outlet Valve - 51-101.6 mm/DN50-100

6. Drawing



**ACTUATOR**

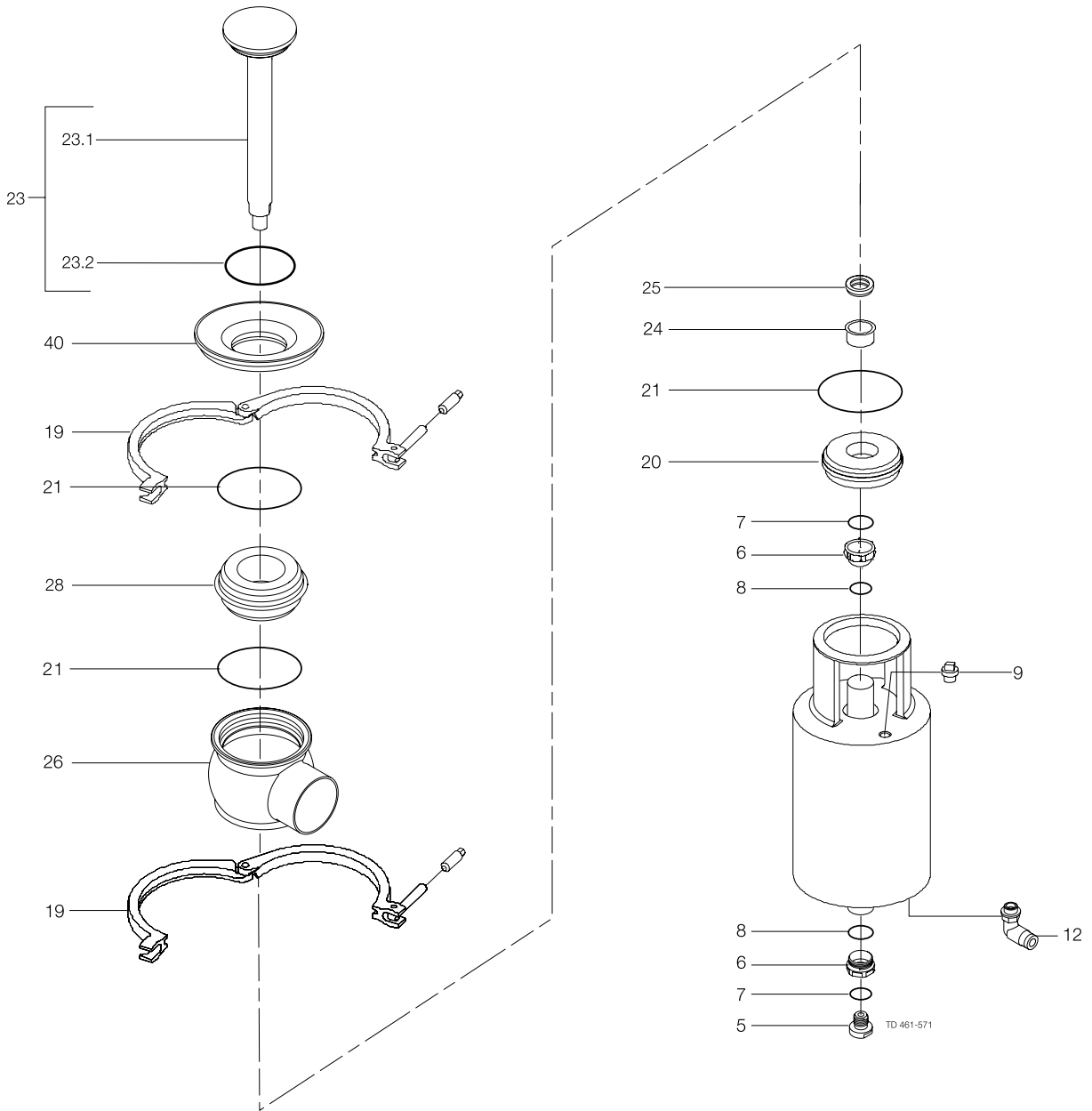
Pos.	Qty	Denomination	DN 50	DN65	DN 80	DN 100
			51 mm	63.5 mm	76.1 mm	101.6 mm
		Actuator, complete (NO) .....	9613-1548-02	9613-1548-03	9613-1548-04	9613-1548-05
		Actuator, complete (NC) .....	9613-1548-07	9613-1548-08	9613-1548-09	9613-1548-10
		Actuator, complete (A/A) .....	9613-1548-12	9613-1548-13	9613-1548-14	9613-1548-15
5	1	Adapter .....	9613-1274-01	9613-1274-01	9613-1274-01	9613-1274-01
6	●	2 Bushing .....				
7	●	2 O-ring .....				
8	●	2 O-ring .....				
9	1	Plug .....	9613-4141-01	9613-4141-01	9613-4141-01	9613-4141-01
12	1(2)	Air fitting .....	9611-99-1988	9611-99-1988	9611-99-1988	9611-99-1988
<b>Clamp</b>						
19	2	Clamp .....	9612-9393-04	9612-9393-05	9612-9393-06	9612-9393-07
<b>Bonnet</b>						
20	1	Bonnet .....	9613-1271-03	9613-1271-04	9613-1271-05	9613-1271-06
21	Δ	3 O-ring, EPDM (standard) .....				
		3 O-ring, HNBR .....				
		3 O-ring, FPM .....				
24	1	Bushing .....	9613-1250-02	9613-1250-02	9613-1250-02	9613-1250-02
25	Δ	1 Lip seal, EPDM (standard) .....				
		1 Lip seal, HNBR .....				
		1 Lip seal, FPM .....				
<b>Seat</b>						
28	1	Seat .....	9613-1275-03	9613-1275-04	9613-1275-05	9613-1275-06
<b>Valve Body</b>						
26	1	Valve body, upper, 1 port ISO .....	9613-1393-05	9613-1393-07	9613-1393-09	9613-1393-11
	1	Valve body, upper, 2 ports ISO .....	9613-1393-06	9613-1393-08	9613-1393-10	9613-1393-12
	1	Valve body, upper, 1 port DIN .....	9613-1394-05	9613-1394-07	9613-1394-09	9613-1394-11
	1	Valve body, upper, 2 ports DIN .....	9613-1394-06	9613-1394-08	9613-1394-10	9613-1394-12
<b>Tank flange</b>						
40	1	Tank flange .....	9634-0699-01	9634-0700-01	9634-0701-01	9634-0702-01
<b>Valve Plug</b>						
23	1	Plug, ISO, complete, EPDM (standard) .....	9613-1388-03	9613-1388-04	9613-1388-05	9613-1388-06
	1	Plug, ISO, complete, HNBR .....	9613-1388-15	9613-1388-16	9613-1388-17	9613-1388-18
	1	Plug, ISO, complete, FPM .....	9613-1388-27	9613-1388-28	9613-1388-29	9613-1388-30
	1	Plug, DIN, complete, EPDM (standard) .....	9613-1388-09	9613-1388-10	9613-1388-11	9613-1388-12
	1	Plug, DIN, complete, HNBR .....	9613-1388-21	9613-1388-22	9613-1388-23	9613-1388-24
	1	Plug, DIN, complete, FPM .....	9613-1388-33	9613-1388-34	9613-1388-35	9613-1388-36
23.1	1	Plug, ISO .....	9613-1398-03	9613-1398-04	9613-1398-05	9613-1398-06
	1	Plug, DIN .....	9613-1398-09	9613-1398-10	9613-1398-11	9613-1398-12
23.2	Δ	1 Plug seal, EPDM (standard) .....				
		1 Plug seal, HNBR .....				
		1 Plug seal, FPM .....				
<b>Recommended spare parts: Service kits.</b>						
	●	Service kit, actuator .....	9611-92-6500	9611-92-6500	9611-92-6500	9611-92-6500
	Δ	Service kit, EPDM .....	9611-92-6701	9611-92-6702	9611-92-6703	9611-92-6704
	Δ	Service kit, HNBR .....	9611-92-6705	9611-92-6706	9611-92-6707	9611-92-6708
	Δ	Service kit, FPM .....	9611-92-6709	9611-92-6710	9611-92-6711	9611-92-6712

Parts marked with ● are included in the service kits (actuator)

Parts marked with Δ are included in the service kits (product wetted parts)

6.1 Unique Single Seat Valve - RA  
Tank Outlet Valve - 51-101.6 mm/DN50-100

6. Drawing



Actuator			DN 50	DN65	DN 80	DN 100
Pos.	Qty	Denomination	51 mm	63.5 mm	76.1 mm	101.6 mm
		Actuator, complete (NO-RA) .....	9613-1548-07	9613-1548-08	9613-1548-09	9613-1548-10
		Actuator, complete (NC-RA) .....	9613-1548-02	9613-1548-03	9613-1548-04	9613-1548-05
		Actuator, complete (A/A) .....	9613-1548-12	9613-1548-13	9613-1548-14	9613-1548-15
5	1	Adapter .....	9613-1274-01	9613-1274-01	9613-1274-01	9613-1274-01
6	●	2 Bushing .....				
7	●	2 O-ring .....				
8	●	2 O-ring .....				
9	1	Plug .....	9613-4141-01	9613-4141-01	9613-4141-01	9613-4141-01
12	1(2)	Air fitting .....	9611-99-1988	9611-99-1988	9611-99-1988	9611-99-1988
<b>Clamp</b>						
19	2	Clamp .....	9612-9393-04	9612-9393-05	9612-9393-06	9612-9393-07
<b>Bonnet</b>						
20	1	Bonnet .....	9613-1271-03	9613-1271-04	9613-1271-05	9613-1271-06
21	Δ	3 O-ring, EPDM (standard) .....				
		3 O-ring, HNBR .....				
		3 O-ring, FPM .....				
24	1	Bushing .....	9613-1250-02	9613-1250-02	9613-1250-02	9613-1250-02
25	Δ	1 Lip seal, EPDM (standard) .....				
		1 Lip seal, HNBR .....				
		1 Lip seal, FPM .....				
<b>Seat</b>						
28	1	Seat .....	9613-1275-03	9613-1275-04	9613-1275-05	9613-1275-06
<b>Valve Body</b>						
26	1	Valve body, upper, 1 port ISO .....	9613-1393-05	9613-1393-07	9613-1393-09	9613-1393-11
	1	Valve body, upper, 2 ports ISO .....	9613-1393-06	9613-1393-08	9613-1393-10	9613-1393-12
	1	Valve body, upper, 1 port DIN .....	9613-1394-05	9613-1394-07	9613-1394-09	9613-1394-11
	1	Valve body, upper, 2 ports DIN .....	9613-1394-06	9613-1394-08	9613-1394-10	9613-1394-12
<b>Tank flange</b>						
40	1	Tank flange .....	9634-0699-01	9634-0700-01	9634-0701-01	9634-0702-01
<b>Valve Plug</b>						
23	1	Plug, RA, ISO, complete, EPDM (standard) .....	9613-1276-03	9613-1276-04	9613-1276-05	9613-1276-06
	1	Plug, RA, ISO, complete, HNBR .....	9613-1276-15	9613-1276-16	9613-1276-17	9613-1276-18
	1	Plug, RA, ISO, complete, FPM .....	9613-1276-27	9613-1276-28	9613-1276-29	9613-1276-30
	1	Plug, RA, DIN, complete, EPDM (standard) .....	9613-1276-09	9613-1276-10	9613-1276-11	9613-1276-12
	1	Plug, RA, DIN, complete, HNBR .....	9613-1276-21	9613-1276-22	9613-1276-23	9613-1276-24
	1	Plug, RA, DIN, complete, FPM .....	9613-1276-33	9613-1276-34	9613-1276-35	9613-1276-36
23.1	1	Plug, RA, ISO .....	9613-1399-03	9613-1399-04	9613-1399-05	9613-1399-06
	1	Plug, RA, DIN .....	9613-1399-09	9613-1399-10	9613-1399-11	9613-1399-12
23.2	Δ	1 Plug seal, EPDM (standard) .....				
		1 Plug seal, HNBR .....				
		1 Plug seal, FPM .....				
<b>Recommended spare parts: Service kits.</b>						
	●	Service kit, actuator .....	9611-92-6500	9611-92-6500	9611-92-6500	9611-92-6500
	Δ	Service kit, EPDM .....	9611-92-6701	9611-92-6702	9611-92-6703	9611-92-6704
	Δ	Service kit, HNBR .....	9611-92-6705	9611-92-6706	9611-92-6707	9611-92-6708
	Δ	Service kit, FPM .....	9611-92-6709	9611-92-6710	9611-92-6711	9611-92-6712

Parts marked with ● are included in the service kits (actuator)

Parts marked with Δ are included in the service kits (product wetted parts)