

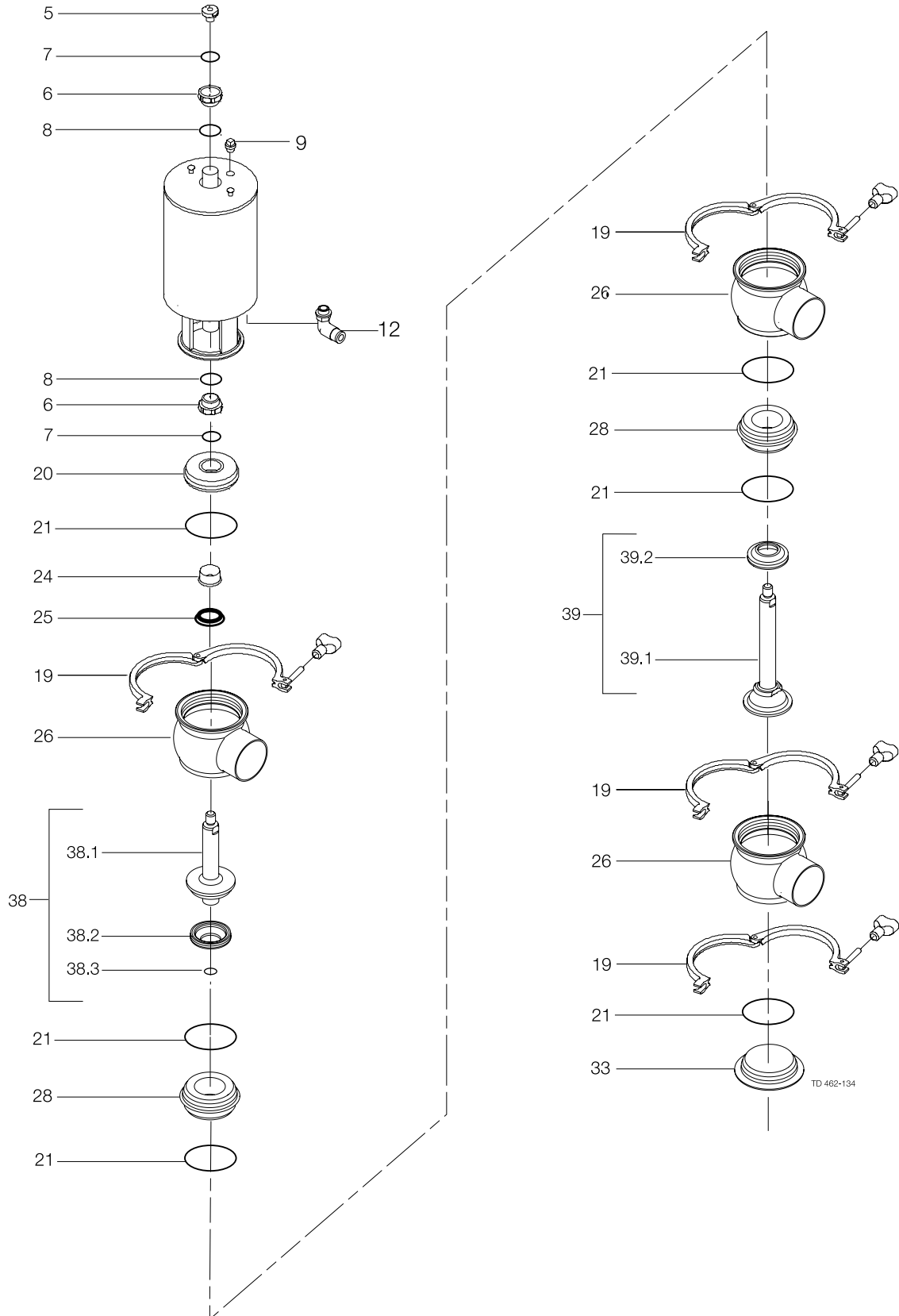
Pos.	Qty	Denomination	1½"	2"
Actuator				
		Actuator, complete (NO-RA)	9613-1548-36	9613-1548-37
		Actuator, complete (NC-RA)	9613-1548-31	9613-1548-32
		Actuator, complete (A/A).....	9613-1548-41	9613-1548-42
	5	Adapter	9613-1274-01	9613-1274-01
☐	6	Bushing.....		
☐	7	O-ring.....		
☐	8	O-ring.....		
	9	Plug	9613-4141-01	9613-4141-01
	12	Air fitting	9611-99-4682	9611-99-4682
Clamp				
	19	Clamp	9612-9393-16	9612-9393-17
Bonnet				
	20	Bonnet	9613-1271-02	9613-1271-03
▲	21	O-ring, EPDM (standard)		
	6	O-ring, NBR		
	6	O-ring, FPM		
	24	Bushing.....	9613-1250-02	9613-1250-02
▲	25	Lip seal, EPDM (standard)		
	1	Lip seal, NBR		
	1	Lip seal, FPM		
	33	Lower bonnet.....	9613-1301-02	9613-1301-03
Seat				
	28	Seat	9613-1275-02	9613-1275-03
Valve Body				
	26	Valve body, upper, 1 ports, clamp.....	9613-1615-03	9613-1615-05
	3	Valve body, upper, 2 ports, clamp.....	9613-1615-04	9613-1615-06
	3	Valve body, upper, 1 ports, weld.....	9613-1393-15	9613-1393-17
	3	Valve body, upper, 2 ports, weld.....	9613-1393-16	9613-1393-18
Valve Plug				
	38	Plug, change over upper RA, complete	9613-1627-02	9613-1627-03
	38.1	Plug, change over upper RA	9613-1629-02	9613-1629-03
▲	38.2	Plug seal, PTFE.....		
▲	38.3	O-ring, EPDM (standard)		
	1	O-ring, NBR		
	1	O-ring, FPM		
	39	Plug, change over lower RA, complete	9613-1628-02	9613-1628-03
	39.1	Plug, change over lower RA	9613-1630-02	9613-1630-03
▲	39.2	Plug seal, PTFE.....		

Recommended spare parts

Service kits				
☐		Service kit, actuator.....	9611-92-6500	9611-92-6500
▲		Service kit, EPDM.....	9611-92-6663	9611-92-6664
▲		Service kit, HNBR.....	9611-92-6668	9611-92-6669
▲		Service kit, FPM	9611-92-6673	9611-92-6674

Parts marked with ☐ are included in the service kits (actuator)
 Parts marked with ▲ are included in the service kits (product wetted parts)

Tool for bushing (pos. 24) 9613-1609-01



Pos.	Qty	Denomination	2½"	3"	4"
Actuator					
		Actuator, complete (NO-RA)	9613-1548-38	9613-1548-39	9613-1548-40
		Actuator, complete (NC-RA)	9613-1548-33	9613-1548-34	9613-1548-35
		Actuator, complete (A/A).....	9613-1548-43	9613-1548-44	9613-1548-45
	5	Adapter	9613-1274-01	9613-1274-01	9613-1274-01
☐	6	Bushing.....			
☐	7	O-ring.....			
☐	8	O-ring.....			
	9	Plug	9613-4141-01	9613-4141-01	9613-4141-01
	12	Air fitting	9611-99-4682	9611-99-4682	9611-99-4682
Clamp					
	19	Clamp	9612-9393-18	9612-9393-19	9612-9393-20
Bonnet					
	20	Bonnet	9613-1271-04	9613-1271-05	9613-1271-06
▲	21	O-ring, EPDM (standard)			
	6	O-ring, NBR			
	6	O-ring, FPM			
	24	Bushing.....	9613-1250-02	9613-1250-02	9613-1250-02
▲	25	Lip seal, EPDM (standard)			
	1	Lip seal, NBR			
	1	Lip seal, FPM			
	33	Lower bonnet.....	9613-1301-04	9613-1301-05	9613-1301-06
Seat					
	28	Seat	9613-1275-04	9613-1275-05	9613-1275-06
Valve Body					
	26	Valve body, upper, 1 ports, clamp.....	9613-1615-07	9613-1615-09	9613-1615-11
	3	Valve body, upper, 2 ports, clamp.....	9613-1615-08	9613-1615-10	9613-1615-12
	3	Valve body, upper, 1 ports, weld.....	9613-1393-19	9613-1393-21	9613-1393-23
	3	Valve body, upper, 2 ports, weld.....	9613-1393-20	9613-1393-22	9613-1393-24
Valve Plug					
	38	Plug, change over upper RA, complete	9613-1627-04	9613-1627-05	9613-1627-06
	38.1	Plug, change over upper RA	9613-1629-04	9613-1629-05	9613-1629-06
▲	38.2	Plug seal, PTFE			
▲	38.3	O-ring, EPDM (standard)			
	1	O-ring, NBR			
	1	O-ring, FPM			
	39	Plug, change over lower RA, complete	9613-1628-04	9613-1628-05	9613-1628-06
	39.1	Plug, change over lower RA	9613-1630-04	9613-1630-05	9613-1630-06
▲	39.2	Plug seal, PTFE			

Recommended spare parts

Service kits					
☐		Service kit, actuator.....	9611-92-6500	9611-92-6500	9611-92-6500
▲		Service kit, EPDM.....	9611-92-6665	9611-92-6666	9611-92-6667
▲		Service kit, HNBR.....	9611-92-6670	9611-92-6671	9611-92-6672
▲		Service kit, FPM	9611-92-6675	9611-92-6676	9611-92-6677

Parts marked with ☐ are included in the service kits (actuator)
 Parts marked with ▲ are included in the service kits (product wetted parts)

Tool for bushing (pos. 24) 9613-1609-01