

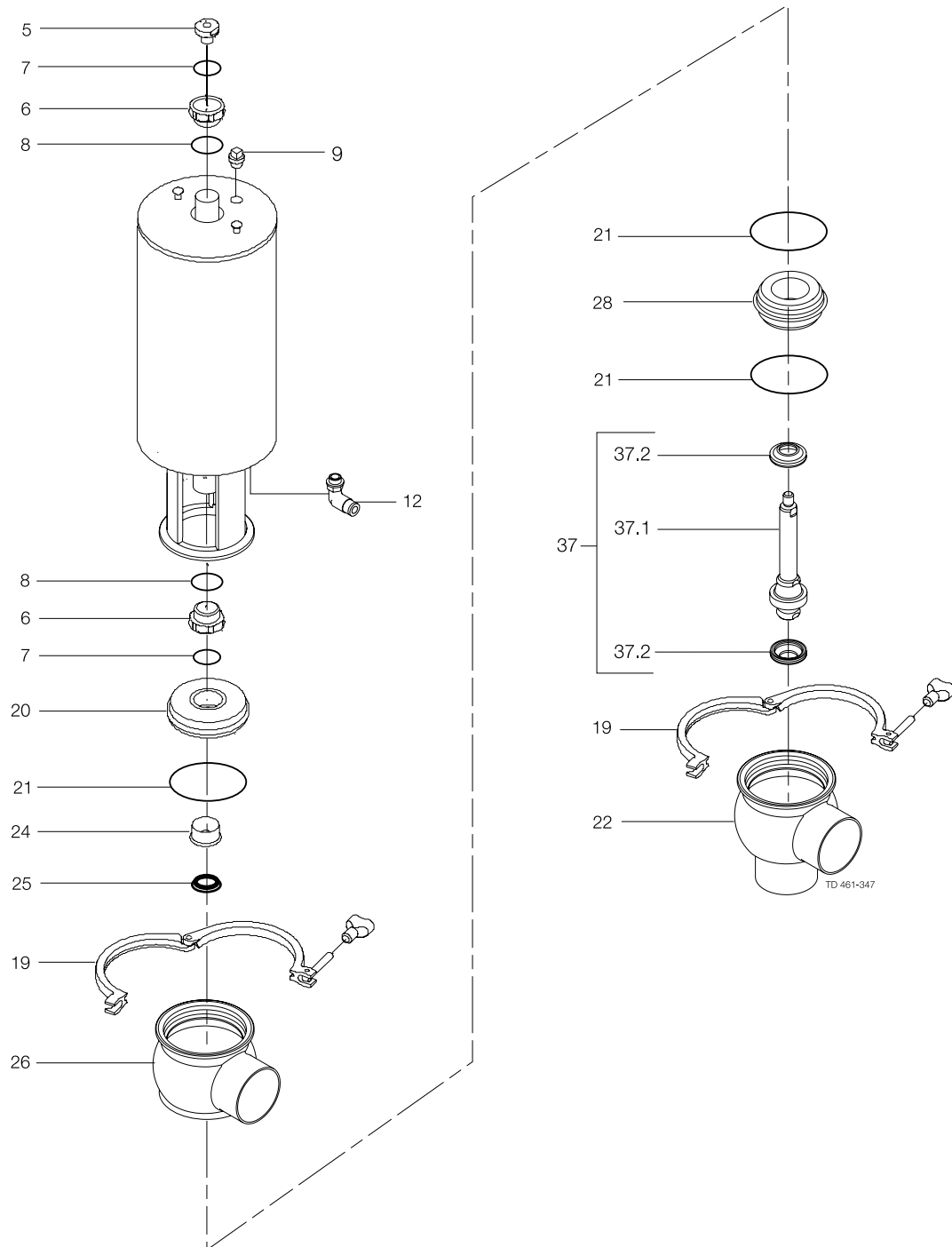
Pos.	Qty	Denomination	1½"	2"
<b>Actuator</b>				
		Actuator, complete (NO) .....	9613-1548-46	9613-1548-47
		Actuator, complete (NC) .....	9613-1548-51	9613-1548-52
		Actuator, complete (A/A).....	9613-1548-56	9613-1548-57
	5	Adapter .....	9613-1274-01	9613-1274-01
☐	6	Bushing.....		
☐	7	O-ring.....		
☐	8	O-ring.....		
	9	Plug .....	9613-4141-01	9613-4141-01
	12	Air fitting .....	9611-99-4682	9611-99-4682
<b>Clamp</b>				
	19	Clamp .....	9612-9393-16	9612-9393-17
<b>Bonnet</b>				
	20	Bonnet .....	9613-1271-02	9613-1271-03
▲	21	O-ring, EPDM (standard) .....		
		O-ring, NBR .....		
		O-ring, FPM .....		
	24	Bushing.....	9613-1250-02	9613-1250-02
▲	25	Lip seal, EPDM (standard) .....		
		Lip seal, NBR .....		
		Lip seal, FPM .....		
<b>Seat</b>				
	28	Seat .....	9613-1275-02	9613-1275-03
<b>Valve Body</b>				
	26	Valve body, upper, 1 port, clamp .....	9613-1615-03	9613-1615-05
		Valve body, upper, 2 ports, clamp.....	9613-1615-04	9613-1615-06
		Valve body, upper, 1 port, weld.....	9613-1393-15	9613-1393-17
		Valve body, upper, 2 ports, weld.....	9613-1393-16	9613-1393-18
	22	Valve body, lower, 2 ports, clamp .....	9613-1616-03	9613-1616-05
		Valve body, lower, 3 ports, clamp .....	9613-1616-04	9613-1616-06
		Valve body, lower, 2 ports, weld .....	9613-1395-15	9613-1395-17
		Valve body, lower, 3 ports, weld .....	9613-1395-16	9613-1395-18
<b>Valve Plug</b>				
	37	Plug, change over, complete .....	9613-1618-02	9613-1618-03
	37.1	Plug, change over .....	9613-1575-01	9613-1576-01
▲	37.2	Plug seal, PTFE .....		

**Recommended spare parts**

<b>Service kits</b>				
☐		Service kit, actuator.....	9611-92-6500	9611-92-6500
▲		Service kit, EPDM.....	9611-92-6633	9611-92-6634
▲		Service kit, HNBR.....	9611-92-6638	9611-92-6639
▲		Service kit, FPM .....	9611-92-6643	9611-92-6644

Parts marked with ☐ are included in the service kits (actuator)  
 Parts marked with ▲ are included in the service kits (product wetted parts)

Tool for bushing (pos. 24) 9613-1609-01



Pos.	Qty	Denomination	2½"	3"	4"
<b>Actuator</b>					
		Actuator, complete (NO) .....	9613-1548-48	9613-1548-49	9613-1548-50
		Actuator, complete (NC) .....	9613-1548-53	9613-1548-54	9613-1548-55
		Actuator, complete (A/A).....	9613-1548-58	9613-1548-59	9613-1548-60
	5	Adapter .....	9613-1274-01	9613-1274-01	9613-1274-01
☐	6	Bushing.....			
☐	7	O-ring.....			
☐	8	O-ring.....			
	9	Plug .....	9613-4141-01	9613-4141-01	9613-4141-01
	12	Air fitting .....	9611-99-4682	9611-99-4682	9611-99-4682
<b>Clamp</b>					
	19	Clamp .....	9612-9393-18	9612-9393-19	9612-9393-20
<b>Bonnet</b>					
	20	Bonnet .....	9613-1271-04	9613-1271-05	9613-1271-06
▲	21	O-ring, EPDM (standard) .....			
		O-ring, NBR .....			
		O-ring, FPM .....			
	24	Bushing.....	9613-1250-02	9613-1250-02	9613-1250-02
▲	25	Lip seal, EPDM (standard) .....			
		Lip seal, NBR .....			
		Lip seal, FPM .....			
<b>Seat</b>					
	28	Seat .....	9613-1275-04	9613-1275-05	9613-1275-06
<b>Valve Body</b>					
	26	Valve body, upper, 1 port, clamp .....	9613-1615-07	9613-1615-09	9613-1615-11
		Valve body, upper, 2 ports, clamp.....	9613-1615-08	9613-1615-10	9613-1615-12
		Valve body, upper, 1 port, weld.....	9613-1393-19	9613-1393-21	9613-1393-23
		Valve body, upper, 2 ports, weld.....	9613-1393-20	9613-1393-22	9613-1393-24
	22	Valve body, lower, 2 ports, clamp .....	9613-1616-07	9613-1616-09	9613-1616-11
		Valve body, lower, 3 ports, clamp .....	9613-1616-08	9613-1616-10	9613-1616-12
		Valve body, lower, 2 ports, weld .....	9613-1395-19	9613-1395-21	9613-1395-23
		Valve body, lower, 3 ports, weld .....	9613-1395-20	9613-1395-22	9613-1395-24
<b>Valve Plug</b>					
	37	Plug, change over, complete .....	9613-1618-04	9613-1618-05	9613-1618-06
	37.1	Plug, change over .....	9613-1577-01	9613-1578-01	9613-1579-01
▲	37.2	Plug seal, PTFE .....			

**Recommended spare parts**

<b>Service kits</b>					
☐		Service kit, actuator.....	9611-92-6500	9611-92-6500	9611-92-6500
▲		Service kit, EPDM.....	9611-92-6635	9611-92-6636	9611-92-6637
▲		Service kit, HNBR.....	9611-92-6640	9611-92-6641	9611-92-6642
▲		Service kit, FPM .....	9611-92-6645	9611-92-6646	9611-92-6647

Parts marked with ☐ are included in the service kits (actuator)  
 Parts marked with ▲ are included in the service kits (product wetted parts)

Tool for bushing (pos. 24) 9613-1609-01