

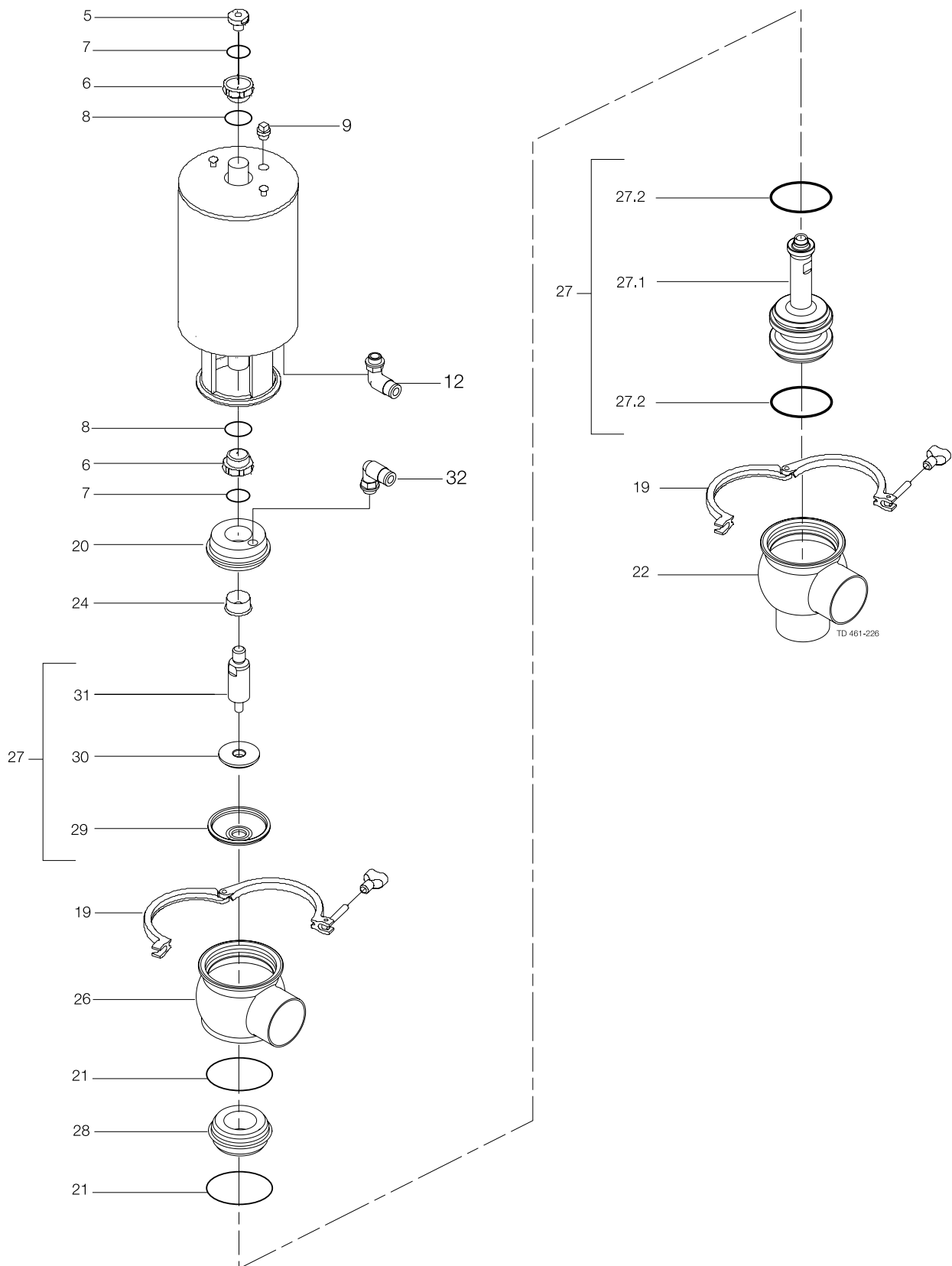
Pos.	Qty	Denomination	1"	1½"	2"
<b>Actuator</b>					
		Actuator, complete (NO) .....	9613-1548-31	9613-1548-31	9613-1548-32
		Actuator, complete (NC) .....	9613-1548-36	9613-1548-36	9613-1548-37
		Actuator, complete (A/A).....	9613-1548-41	9613-1548-41	9613-1548-42
	5	Adapter .....	9613-1274-01	9613-1274-01	9613-1274-01
☐	6	Bushing.....			
☐	7	O-ring.....			
☐	8	O-ring.....			
	9	Plug .....	9613-4141-01	9613-4141-01	9613-4141-01
	12	Air fitting .....	9611-99-4682	9611-99-4682	9611-99-4682
<b>Clamp</b>					
	19	Clamp .....	9612-9393-16	9612-9393-16	9612-9393-17
<b>Bonnet</b>					
	20	Bonnet .....	9613-1427-01	9613-1427-01	9613-1428-01
	24	Bushing.....	9613-1250-02	9613-1250-02	9613-1250-02
<b>Seat</b>					
▲	21	O-ring, EPDM (standard) .....			
		O-ring, NBR .....			
		O-ring, FPM .....			
	28	Seat .....	9613-1275-01	9613-1275-02	9613-1275-03
<b>Valve Body</b>					
	26	Valve body, upper, 1 port, clamp .....	9613-1615-01	9613-1615-03	9613-1615-05
		Valve body, upper, 2 ports, clamp.....	9613-1615-02	9613-1615-04	9613-1615-06
		Valve body, upper, 1 port, weld.....	9613-1393-13	9613-1393-15	9613-1393-17
		Valve body, upper, 2 ports, weld.....	9613-1393-14	9613-1393-16	9613-1393-18
	22	Valve body, lower, 2 ports, clamp .....	9613-1616-01	9613-1616-03	9613-1616-05
		Valve body, lower, 3 ports, clamp .....	9613-1616-02	9613-1616-04	9613-1616-06
		Valve body, lower, 2 ports, weld .....	9613-1395-13	9613-1395-15	9613-1395-17
		Valve body, lower, 3 ports, weld .....	9613-1395-14	9613-1395-16	9613-1395-18
<b>Valve Plug</b>					
	27	Plug, change over, complete, EPDM (standard) .....	9613-1600-01	9613-1600-02	9613-1600-03
		Plug, change over, complete, HNBR .....	9613-1600-13	9613-1600-14	9613-1600-15
		Plug, change over, complete, FPM .....	9613-1600-25	9613-1600-26	9613-1600-27
	27.1	Plug, change over .....	9613-1436-01	9613-1439-01	9613-1439-02
▲	27.2	Plug seal, EPDM (standard) .....			
		Plug seal, HNBR .....			
		Plug seal, FPM .....			
▲	29	Diaphragm .....			
	30	Disc for diaphragm .....	9613-1440-01	9613-1440-01	9613-1441-01
	31	Upper spindle.....	9613-1446-01	9613-1446-01	9613-1433-01
	32	Air fitting .....	9611-99-4682	9611-99-4682	9611-99-4682

**Recommended spare parts**

<b>Service kits</b>					
☐		Service kit, actuator.....	9611-92-6500	9611-92-6500	9611-92-6500
▲		Service kit, EPDM.....	9611-92-6615	9611-92-6616	9611-92-6617
▲		Service kit, HNBR.....	9611-92-6621	9611-92-6622	9611-92-6623
▲		Service kit, FPM .....	9611-92-6627	9611-92-6628	9611-92-6629

Parts marked with ☐ are included in the service kits (actuator)  
Parts marked with ▲ are included in the service kits (product wetted parts)

Tool for bushing (pos. 24) 9613-1609-01



Pos.	Qty	Denomination	2½"	3"	4"
<b>Actuator</b>					
		Actuator, complete (NO) .....	9613-1548-33	9613-1548-34	9613-1548-35
		Actuator, complete (NC) .....	9613-1548-38	9613-1548-39	9613-1548-40
		Actuator, complete (A/A).....	9613-1548-43	9613-1548-44	9613-1548-45
	5	Adapter .....	9613-1274-01	9613-1274-01	9613-1274-01
☐	6	Bushing.....			
☐	7	O-ring.....			
☐	8	O-ring.....			
	9	Plug .....	9613-4141-01	9613-4141-01	9613-4141-01
	12	Air fitting .....	9611-99-4682	9611-99-4682	9611-99-4682
<b>Clamp</b>					
	19	Clamp .....	9612-9393-18	9612-9393-19	9612-9393-20
<b>Bonnet</b>					
	20	Bonnet .....	9613-1429-01	9613-1430-01	9613-1431-01
	24	Bushing.....	9613-1250-02	9613-1250-02	9613-1250-02
<b>Seat</b>					
▲	21	O-ring, EPDM (standard) .....			
		O-ring, NBR .....			
		O-ring, FPM .....			
	28	Seat .....	9613-1275-04	9613-1275-05	9613-1275-06
<b>Valve Body</b>					
	26	Valve body, upper, 1 port, clamp .....	9613-1615-07	9613-1615-09	9613-1615-11
		Valve body, upper, 2 ports, clamp.....	9613-1615-08	9613-1615-10	9613-1615-12
		Valve body, upper, 1 port, weld.....	9613-1393-19	9613-1393-21	9613-1393-23
		Valve body, upper, 2 ports, weld.....	9613-1393-20	9613-1393-22	9613-1393-24
	22	Valve body, lower, 2 ports, clamp .....	9613-1616-07	9613-1616-09	9613-1616-11
		Valve body, lower, 3 ports, clamp .....	9613-1616-08	9613-1616-10	9613-1616-12
		Valve body, lower, 2 ports, weld.....	9613-1395-19	9613-1395-21	9613-1395-23
		Valve body, lower, 3 ports, weld.....	9613-1395-20	9613-1395-22	9613-1395-24
<b>Valve Plug</b>					
	27	Plug, change over, complete, EPDM (standard) .....	9613-1600-04	9613-1600-05	9613-1600-06
		Plug, change over, complete, HNBR .....	9613-1600-16	9613-1600-17	9613-1600-18
		Plug, change over, complete, FPM .....	9613-1600-28	9613-1600-29	9613-1600-30
	27.1	Plug, change over .....	9613-1439-03	9613-1439-04	9613-1439-05
▲	27.2	Plug seal, EPDM (standard) .....			
		Plug seal, HNBR .....			
		Plug seal, FPM .....			
▲	29	Diaphragm .....			
	30	Disc for diaphragm .....	9613-1441-01	9613-1443-01	9613-1443-01
	31	Upper spindle.....	9613-1433-01	9613-1433-01	9613-1433-01
	32	Air fitting .....	9611-99-4682	9611-99-4682	9611-99-4682

**Recommended spare parts**

<b>Service kits</b>					
☐		Service kit, actuator.....	9611-92-6500	9611-92-6500	9611-92-6500
▲		Service kit, EPDM.....	9611-92-6618	9611-92-6619	9611-92-6620
▲		Service kit, HNBR.....	9611-92-6624	9611-92-6625	9611-92-6626
▲		Service kit, FPM .....	9611-92-6630	9611-92-6631	9611-92-6632

Parts marked with ☐ are included in the service kits (actuator)  
Parts marked with ▲ are included in the service kits (product wetted parts)

Tool for bushing (pos. 24) 9613-1609-01