

Hyclean Single Mechanical Seals (Complete) - SRU1 and SRU2 Pump Models

2 seals per pump. It is recommended to replace both sets of seals when wear dictates seal replacement

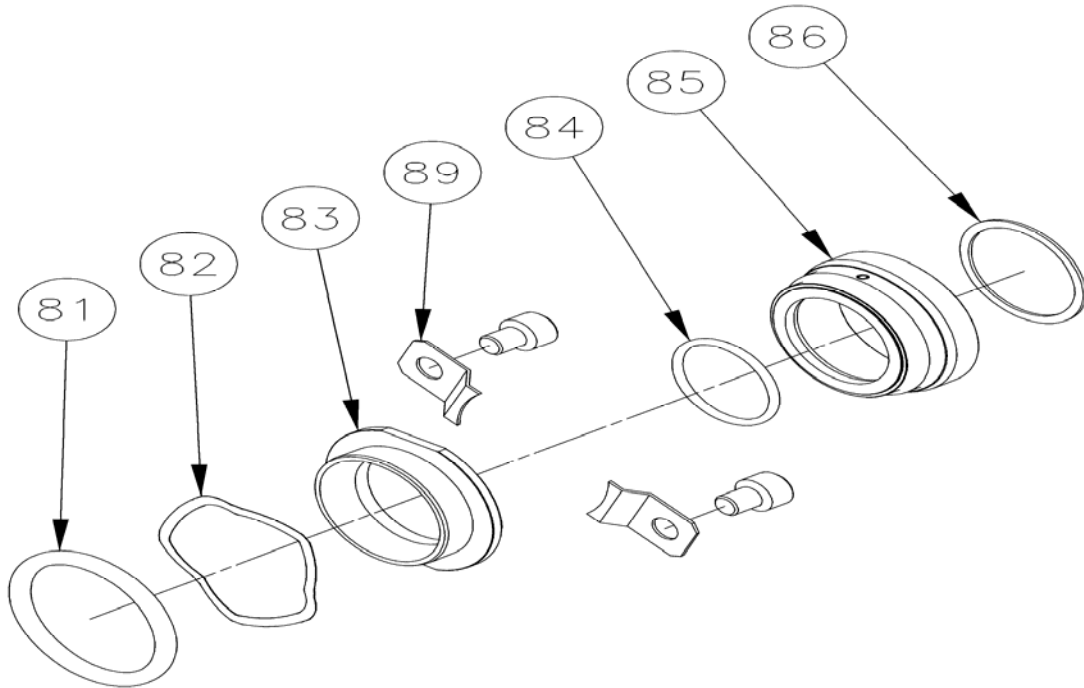
Rotary Seal / Stationary Seal Ring	'O' Rings	SRU1 Part No.	SRU2 Part No.
Stainless Steel / Carbon	NBR	9630070142	9630046729
	EPDM	9630053608	9630046731
	FPM	9630060999	9630046730
Silicon Carbide / Carbon	NBR	9630090687	9630046745
	EPDM	9630090686	9630046747
	FPM	9630057357	9630046746
Silicon Carbide / Silicon Carbide	NBR	9630090685	9630046758
	EPDM	9630053609	9630046760
	FPM	9630065312	9630046759
Description	Qty	SRU1 Part No.	SRU2 Part No.
Retaining Clip	4	9630050761	9630042394
Screw, Retaining Clip	4	9630027365	9630027365

Additional parts to convert pump fitted with above Hyclean seals to single flushed seals

Description	Drawing Item No.	Qty	SRU1 Part No.	SRU2 Part No.
Conversion kit - NPT	-	1	9630091232	9630091234
Conversion kits comprising of:-				
Housing, NPT	79	2	9630054248	9630041956
'O' Ring (FPM)	87	2	9630027378	9630037158
Lip Seal (FPM)	88	2	9630054231	9630043050
Screw, Housing	-	4	9630024603	9630024601

Note: Retaining clip and screw not required for flushed seals.

Hyclean Mechanical Seal - Exploded View Drawing



Hyclean Flushed Mechanical Seal - Exploded View Drawing

