

**Hyclean Single Mechanical Seals (Complete) - SRU5 and SRU6 Pump Models**

2 seals per pump. It is recommended to replace both sets of seals when wear dictates seal replacement

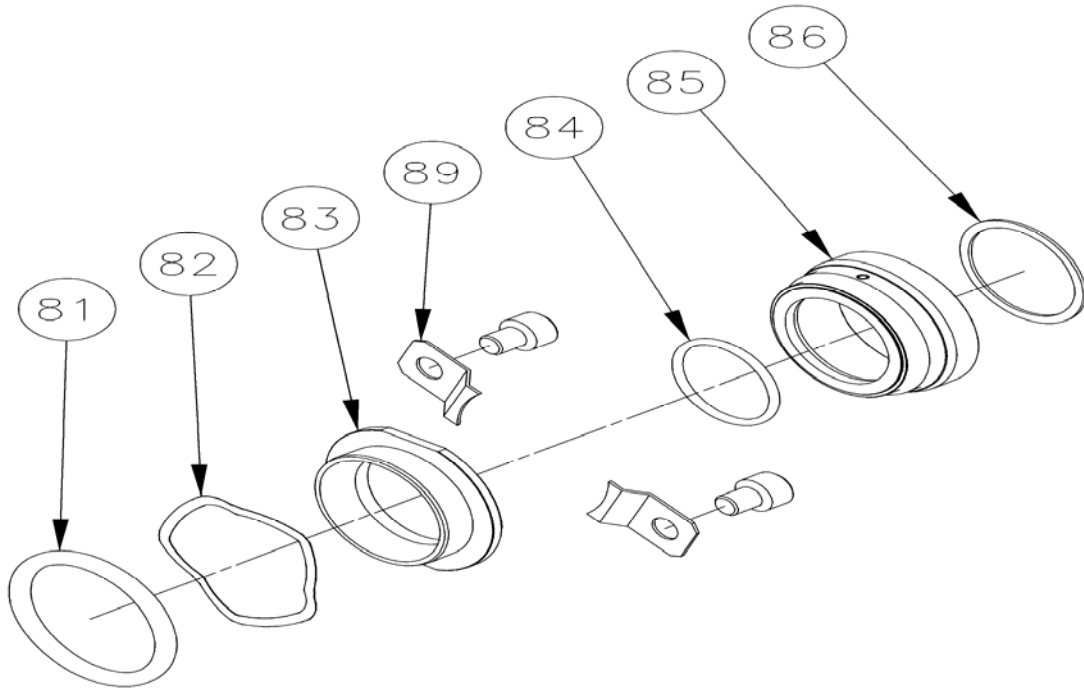
<b>Rotary Seal / Stationary Seal Ring</b>	<b>'O' Rings</b>	<b>SRU5 Part No.</b>	<b>SRU6 Part No.</b>
Stainless Steel / Carbon	NBR	9630046738	9630053215
	EPDM	9630046744	9630041719
	FPM	9630046743	9630030780
Silicon Carbide / Carbon	NBR	9630046755	9630090689
	EPDM	9630046757	9630041729
	FPM	9630046756	9630057267
Silicon Carbide / Silicon Carbide	NBR	9630046769	9630060539
	EPDM	9630046771	9630041720
	FPM	9630046770	9630049360
<b>Description</b>	<b>Qty</b>	<b>SRU5 Part No.</b>	<b>SRU6 Part No.</b>
Retaining Clip	4	9630042396	9630042396
Screw, Retaining Clip	4	9630042399	9630042399

**Additional parts to convert pump fitted with above Hyclean seals to single flushed seals**

<b>Description</b>	<b>Drawing Item No.</b>	<b>Qty</b>	<b>SRU5 Part No.</b>	<b>SRU6 Part No.</b>
Conversion kit - NPT	-	1	9630091240	9630091242
<b>Conversion kits comprising of:-</b>				
Housing, NPT	79	2	9630042121	9630049929
'O' Ring (FPM)	87	2	9630043063	9630031929
Lip Seal (FPM)	88	2	9630028335	9630032804
Screw, Housing	-	4	9630024635	-
Stud	-	4	-	9630027485
Nut	-	4	-	9630024051
Washer	-	4	-	9630024233

Note: Retaining clip and screw not required for flushed seals.

Hyclean Mechanical Seal - Exploded View Drawing



Hyclean Flushed Mechanical Seal - Exploded View Drawing

