

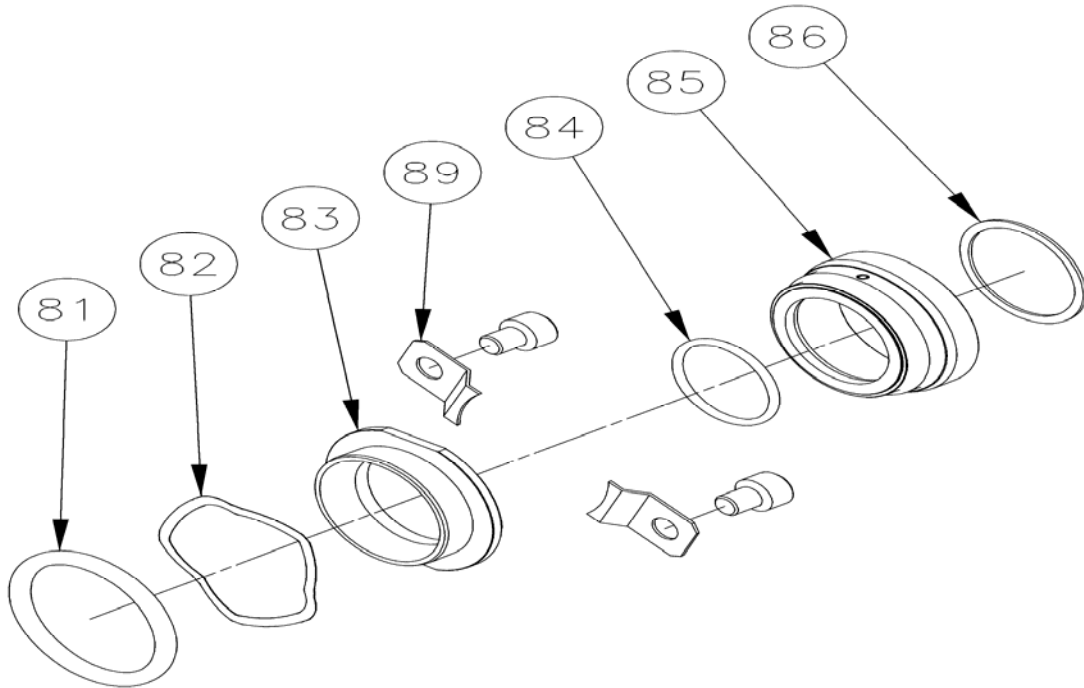
Hyclean Single Mechanical Seals (Parts) - SRU Pump Models

Drg No.	Description	Material	Qty	SRU1	SRU2
				Part No	Part No
81	Rotorcase 'O' Ring	NBR	2	9630050800	9630042759
		EPDM		9630050799	9630042761
		FPM		9630050801	9630042760
82	Wave Spring		2	9630050798	9630042767
83	Stationary Seal Ring	Solid Carbon	2	9630031237	9630029349
		Silicon Carbide		9630023183	9630029474
		Inserted Sil.Car.		-	9630057066
84	Shaft 'O' Ring	NBR	2	9630023345	9630019400
		EPDM		9630023526	9630025331
		FPM		9630023406	9630019399
85	Rotary Seal Ring	Stainless Steel	2	9630031240	9630042757
				Silicon Carbide	9630031241
86	Washer	NBR	2	9630050796	9630046535
		FPM		9630050797	9630046695

Drg No.	Description	Material	Qty	SRU3	SRU4
				Part No	Part No
81	Rotorcase 'O' Ring	NBR	2	9630042771	9630042786
		EPDM		9630042773	9630042788
		FPM		9630042772	9630042787
82	Wave Spring		2	9630042780	9630042794
83	Stationary Seal Ring	Solid Carbon	2	9630037760	9630025796
		Silicon Carbide		9630042768	9630042783
		Inserted Sil.Car.		9630056418	9630052311
84	Shaft 'O' Ring	NBR	2	9630046505	9630023353
		EPDM		9630046509	9630023531
		FPM		9630046508	9630023418
85	Rotary Seal Ring	Stainless Steel	2	9630042769	9630042784
				Silicon Carbide	9630042770
86	Washer	NBR	2	9630046536	9630046537
		FPM		9630046696	9630046697

Drg No.	Description	Material	Qty	SRU5	SRU6
				Part No	Part No
81	Rotorcase 'O' Ring	NBR	2	9630042799	9630048174
		EPDM		9630042801	9630030198
		FPM		9630042800	9630048175
82	Wave Spring		2	9630042807	9630048005
83	Stationary Seal Ring	Solid Carbon	2	9630039819	9630047980
		Silicon Carbide		9630042795	-
		Inserted Sil.Car.		9630052312	9630048002
84	Shaft 'O' Ring	NBR	2	9630046511	9630025417
		EPDM		9630046514	9630025437
		FPM		9630046513	9630025398
85	Rotary Seal Ring	Stainless Steel	2	9630042797	9630048004
				Silicon Carbide	9630042798
86	Washer	NBR	2	9630046538	9630048006
		FPM		9630046698	9630048007

Hyclean Mechanical Seal - Exploded View Drawing



Hyclean Flushed Mechanical Seal - Exploded View Drawing

