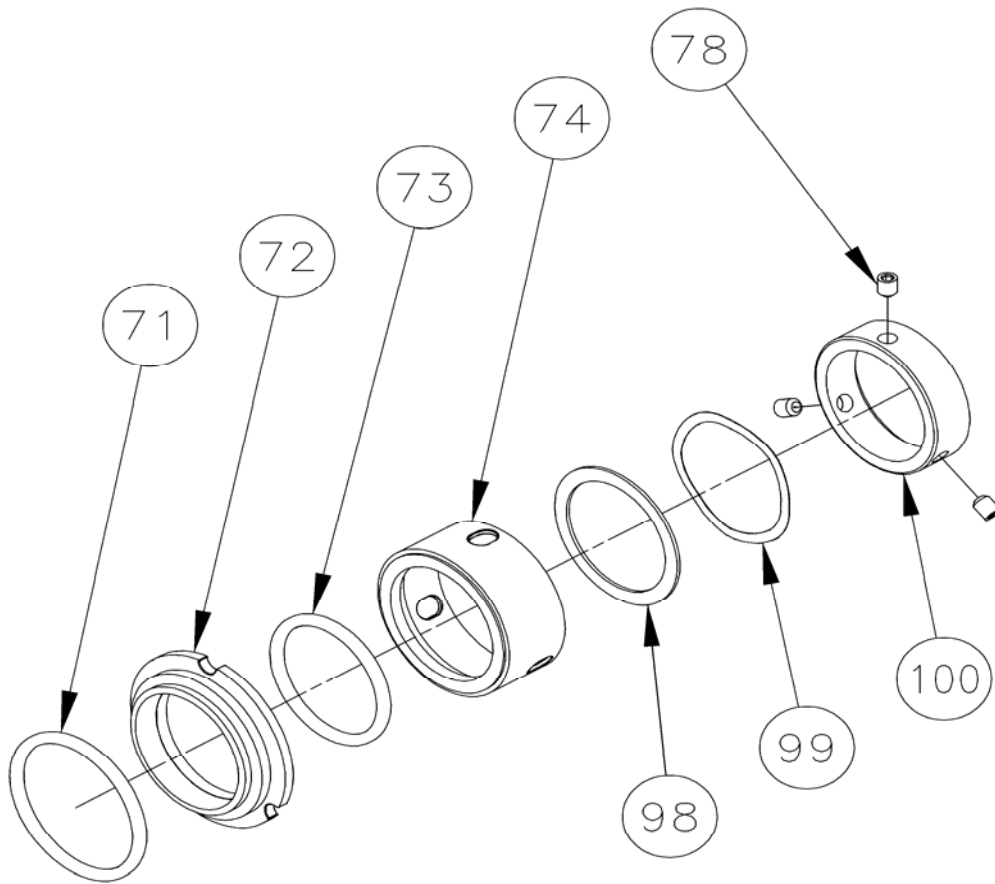


R90 Single Mechanical Seals (Complete) - SRU3 and SRU4 Pump Models

2 seals per pump. It is recommended to replace both sets of seals when wear dictates seal replacement

Rotary Seal / Stationary Seal Ring	'O' Rings	SRU3 Part No.	SRU4 Part No.	
Stainless Steel / Carbon	NBR	9630033230	9630033114	
	EPDM	9630033231	9630033233	
	FPM	9630032908	9630032968	
	PTFE	9630033232	9630033234	
Stainless Steel / Inserted Carbon	NBR	9630033252	9630033253	
	EPDM	9630033257	9630033260	
	FPM	9630033256	9630033259	
	PTFE	9630033258	9630033261	
Tungsten Carbide / Inserted Carbon	NBR	9630033269	9630033270	
	EPDM	9630033280	9630033283	
	FPM	9630033279	9630033282	
	PTFE	9630033281	9630033284	
Tungsten Carbide / Tungsten Carbide	NBR	9630033291	9630033292	
	EPDM	9630033302	9630033305	
	FPM	9630033301	9630033304	
	PTFE	9630033303	9630033306	
Silicon Carbide / Inserted Carbon	NBR	9630090699	9630042382	
	EPDM	9630073216	9630087140	
	FPM	9630090700	9630031835	
	PTFE	9630090701	9630057619	
Silicon Carbide / Silicon Carbide	NBR	9630043322	9630090702	
	EPDM	9630050713	9630061483	
	FPM	9630035405	9630045054	
	PTFE	9630073421	9630039376	
Description	Qty	SRU3 Part No.	SRU4 Part No.	
Anti-Rotation Pin	6	9630031424	9630031422	
Spacer (over 145 psi only)	2	9630033143	9630028655	
Spacer 'O' Ring (FPM)	2	9630024118	9630026743	
Additional parts to convert pump fitted with above R90 seals to single flushed seals				
Description	Drawing Item No.	Qty	SRU3 Part No.	SRU4 Part No.
Conversion kit - NPT	-	1	9630091223	9630091225
Conversion kits comprising of:-				
Gasket	75	2	9630921685	9630921686
Lip Seal (FPM)	76	2	9630061803	9630061804
Spacer 'O' Ring (FPM)	77	2	9630024118	9630027643
Spacer	77A	2	9630033143	9630028655
Housing, NPT	79	2	9630046010	9630045824
Stud		4	9630027474	-
Washer		4	9630024231	-
Nut, Stud		4	9630024057	-
Screw		4	-	9630060520

R90 Single Mechanical Seal - Exploded View Drawing



R90 Single Flushed Mechanical Seal - Exploded View Drawing

