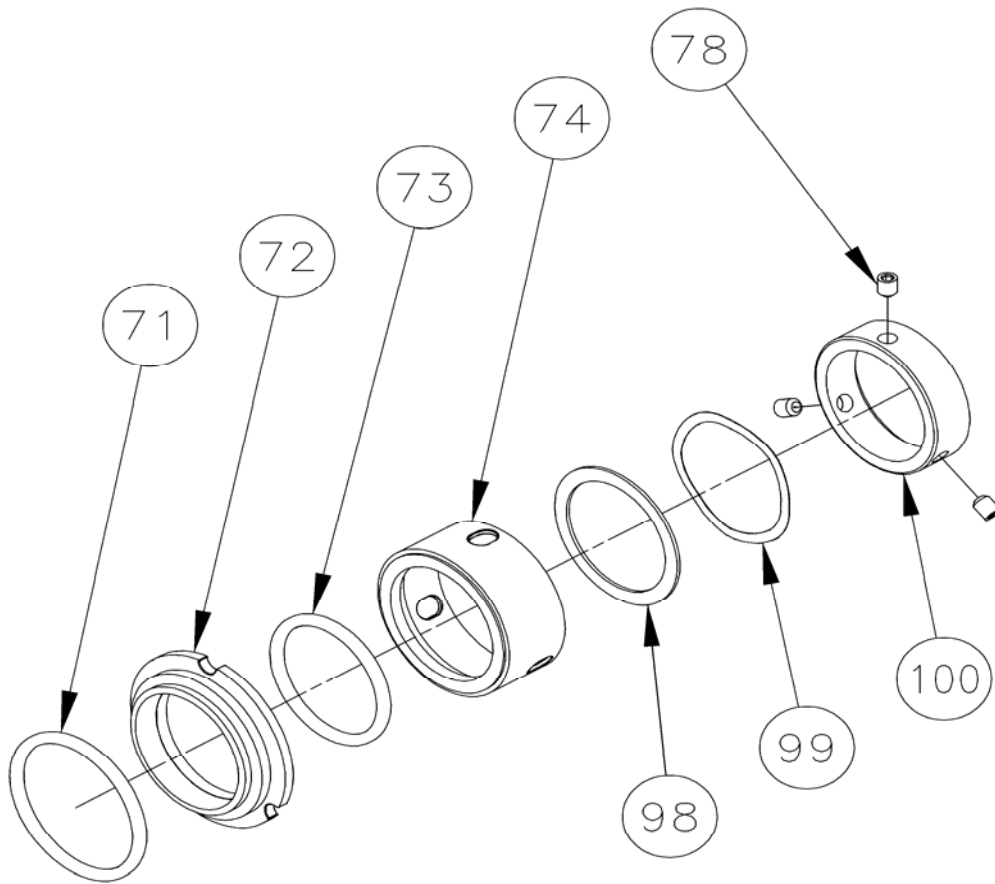


**R90 Single Mechanical Seals (Complete) - SRU5 and SRU6 Pump Models**

2 seals per pump. It is recommended to replace both sets of seals when wear dictates seal replacement

<b>Rotary Seal / Stationary Seal Ring</b>	<b>'O' Rings</b>	<b>SRU5 Part No.</b>	<b>SRU6 Part No.</b>	
Stainless Steel / Carbon	NBR	9630033117	9630033237	
	EPDM	9630033235	9630033239	
	FPM	9630033118	9630033238	
	PTFE	9630033236	9630033240	
Stainless Steel / Inserted Carbon	NBR	9630033254	9630033255	
	EPDM	9630033263	9630033266	
	FPM	9630033262	9630033265	
	PTFE	9630033264	9630033267	
Tungsten Carbide / Inserted Carbon	NBR	9630033271	9630033272	
	EPDM	9630033286	9630033289	
	FPM	9630033285	9630033288	
	PTFE	9630033287	9630033290	
Tungsten Carbide / Tungsten Carbide	NBR	9630033293	9630033294	
	EPDM	9630033308	9630033311	
	FPM	9630033307	9630033310	
	PTFE	9630033309	9630033312	
Silicon Carbide / Inserted Carbon	NBR	9630087180	9630090707	
	EPDM	9630090703	9630032866	
	FPM	9630090704	9630028988	
	PTFE	9630085989	9630069377	
Silicon Carbide / Silicon Carbide	NBR	9630062756	9630090705	
	EPDM	9630057537	9630077819	
	FPM	9630045055	9630032232	
	PTFE	9630045555	9630090706	
<b>Description</b>	<b>Qty</b>	<b>SRU5 Part No.</b>	<b>SRU6 Part No.</b>	
Anti-Rotation Pin	6	9630031422	9630029653	
Spacer (over 145 psi only)	2	9630028628	9630028608	
Spacer 'O' Ring (FPM)	2	9630024194	9630024289	
<b>Additional parts to convert pump fitted with above R90 seals to single flushed seals</b>				
<b>Description</b>	<b>Drawing Item No.</b>	<b>Qty</b>	<b>SRU5 Part No.</b>	<b>SRU6 Part No.</b>
Conversion kit - NPT	-	1	9630091228	9630091230
<b>Conversion kits comprising of:-</b>				
Gasket	75	2	9630921683	9630921687
Lip Seal (FPM)	76	2	9630061805	9630061806
Spacer 'O' Ring (FPM)	77	2	9630024194	9630024289
Spacer	77A	2	9630028628	9630028608
Housing, NPT	79	2	9630045839	9630046167
Stud		4	9630019863	9630027485
Washer		4	9630024233	9630024233
Nut, Stud		4	9630024051	9630024051

R90 Single Mechanical Seal - Exploded View Drawing



R90 Single Flushed Mechanical Seal - Exploded View Drawing

