

Pressure Relief Valve (Complete) - SRU Pump Models

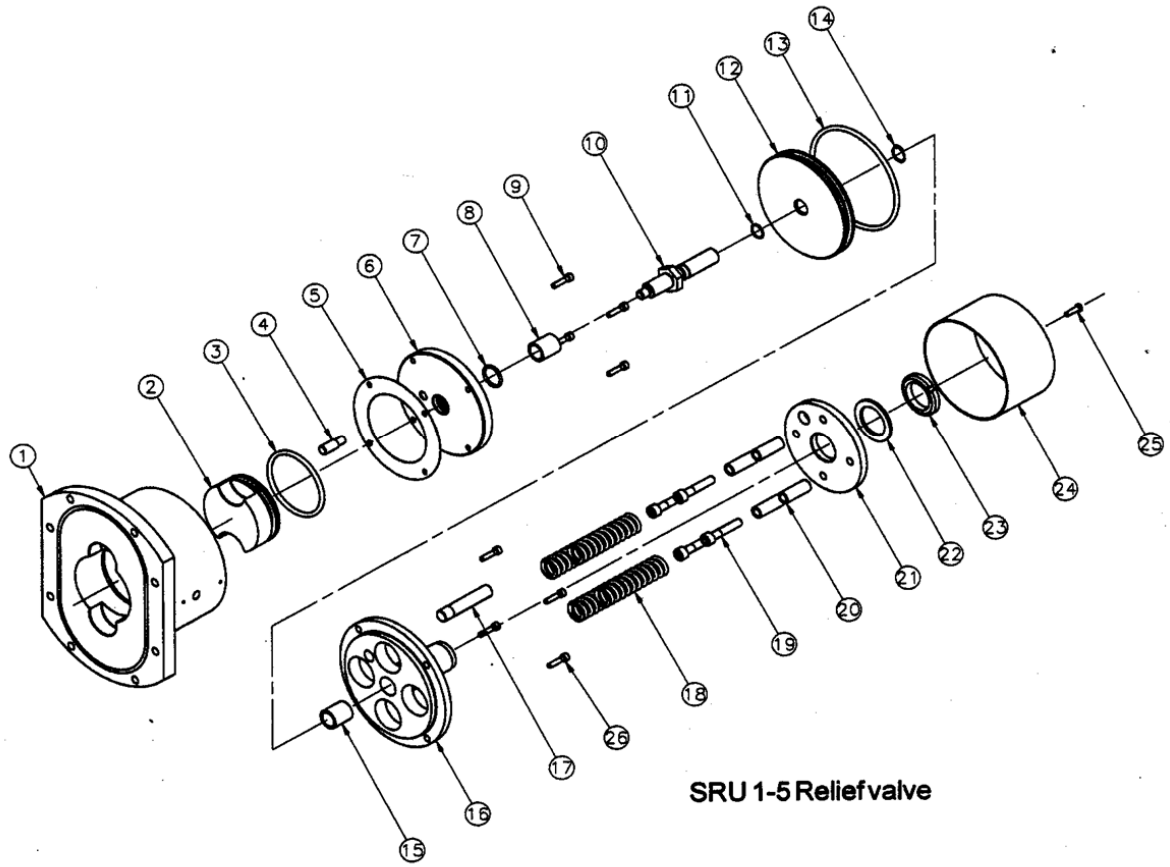
Complete assembly includes rotorcase cover.
For elastomers required: N = NBR, E = EPDM, V = FPM and P = PTFE.

| Valve type | SRU1 | | SRU2 | | SRU3 | |
|---|--------------|------------|--------------|------------|--------------|------------|
| | Part No. | Item No. | Part No. | Item No. | Part No. | Item No. |
| Std pressure < 12 bar (SRU1) < 10 bar (2-3) | 4083.001N | 9630032548 | 4083.002N | 9630032550 | 4083.003N | 9630032551 |
| | 4083.001E | 9630047160 | 4083.002E | 9630027296 | 4083.003E | 9630043291 |
| | 4083.001V | 9630032549 | 4083.002V | 9630033115 | 4083.003V | 9630033119 |
| | 4083.001P | 9630034307 | 4083.002P | 9630034216 | 4083.003P | 9630034567 |
| High pressure > 12 bar (SRU1) > 10 bar (2-3) | 4083.001N/HP | 9630045539 | 4083.002N/HP | 9630024964 | 4083.003N/HP | 9630048177 |
| | 4083.001E/HP | 9630047618 | 4083.002E/HP | 9630024957 | 4083.003E/HP | 9630045905 |
| | 4083.001V/HP | 9630037687 | 4083.002V/HP | 9630045997 | 4083.003V/HP | 9630045609 |
| | 4083.001P/HP | 9630047617 | 4083.002P/HP | 9630024959 | 4083.003P/HP | 9630048178 |
| Std pressure < 12 bar (SRU1) < 10 bar (2-3) with lever lift | 4083.101N | 9630044546 | 4083.102N | 9630045082 | 4083.103N | 9630046971 |
| | 4083.101E | 9630091243 | 4083.102E | 9630046972 | 4083.103E | 9630046973 |
| | 4083.101V | 9630091244 | 4083.102V | 9630059453 | 4083.103V | 9630026838 |
| | 4083.101P | 9630091245 | 4083.102P | 9630091250 | 4083.103P | 9630091255 |
| High pressure > 12 bar (SRU1) > 10 bar (2-3) with lever lift | 4083.101N/HP | 9630091246 | 4083.102N/HP | 9630091251 | 4083.103N/HP | 9630091256 |
| | 4083.101E/HP | 9630091247 | 4083.102E/HP | 9630091252 | 4083.103E/HP | 9630091257 |
| | 4083.101V/HP | 9630091248 | 4083.102V/HP | 9630091253 | 4083.103V/HP | 9630091258 |
| | 4083.101P/HP | 9630091249 | 4083.102P/HP | 9630091254 | 4083.103P/HP | 9630091259 |

| Valve type | SRU4 | | SRU5 | |
|--|--------------|------------|--------------|------------|
| | Part No. | Item No. | Part No. | Item No. |
| Std pressure < 10 bar | 4083.004N | 9630032552 | 4083.005N | 9630032553 |
| | 4083.004E | 9630039307 | 4083.005E | 9630045541 |
| | 4083.004V | 9630033120 | 4083.005V | 9630033128 |
| | 4083.004P | 9630034189 | 4083.005P | 9630045590 |
| High pressure > 10 bar | 4083.004N/HP | 9630033094 | 4083.005N/HP | 9630047693 |
| | 4083.004E/HP | 9630031450 | 4083.005E/HP | 9630047692 |
| | 4083.004V/HP | 9630037120 | 4083.005V/HP | 9630029103 |
| | 4083.004P/HP | 9630030615 | 4083.005P/HP | 9630045543 |
| Std pressure < 10 bar with lever lift | 4083.104N | 9630091260 | 4083.105N | 9630091265 |
| | 4083.104E | 9630046974 | 4083.105E | 9630091266 |
| | 4083.104V | 9630075494 | 4083.105V | 9630047273 |
| | 4083.104P | 9630042755 | 4083.105P | 9630042284 |
| High pressure > 10 bar with lever lift | 4083.104N/HP | 9630091261 | 4083.105N/HP | 9630091267 |
| | 4083.104E/HP | 9630091262 | 4083.105E/HP | 9630091268 |
| | 4083.104V/HP | 9630091263 | 4083.105V/HP | 9630091269 |
| | 4083.104P/HP | 9630091264 | 4083.105P/HP | 9630091270 |

| Valve type | SRU6 standard | | SRU6 with lever lift | |
|------------|---------------|------------|----------------------|------------|
| | Part No. | Item No. | Part No. | Item No. |
| < 7 bar | 4083.006N | 9630032554 | 4083.106N | 9630091272 |
| | 4083.006E | 9630057151 | 4083.106E | 9630055893 |
| | 4083.006V | 9630033133 | 4083.106V | 9630054329 |
| | 4083.006P | 9630042269 | 4083.106P | 9630042271 |
| < 10 bar | 4083.006N/ME | 9630045542 | 4083.106N/ME | 9630091273 |
| | 4083.006E/ME | 9630025005 | 4083.106E/ME | 9630091274 |
| | 4083.006V/ME | 9630046886 | 4083.106V/ME | 9630091275 |
| | 4083.006P/ME | 9630022269 | 4083.106P/ME | 9630091276 |
| < 15 bar | 4083.006N/HP | 9630038272 | 4083.106N/HP | 9630091277 |
| | 4083.006E/HP | 9630058067 | 4083.106E/HP | 9630091278 |
| | 4083.006V/HP | 9630045807 | 4083.106V/HP | 9630091279 |
| | 4083.006P/HP | 9630048700 | 4083.106P/HP | 9630091280 |
| < 18 bar | 4083.006N/HP1 | 9630049002 | 4083.106N/HP1 | 9630091281 |
| | 4083.006E/HP1 | 9630062101 | 4083.106E/HP1 | 9630091282 |
| | 4083.006V/HP1 | 9630036122 | 4083.106V/HP1 | 9630091283 |
| | 4083.006P/HP1 | 9630091271 | 4083.106P/HP1 | 9630091284 |

Pressure Relief Valve - Exploded View Drawing



SRU 1-5 Relief valve