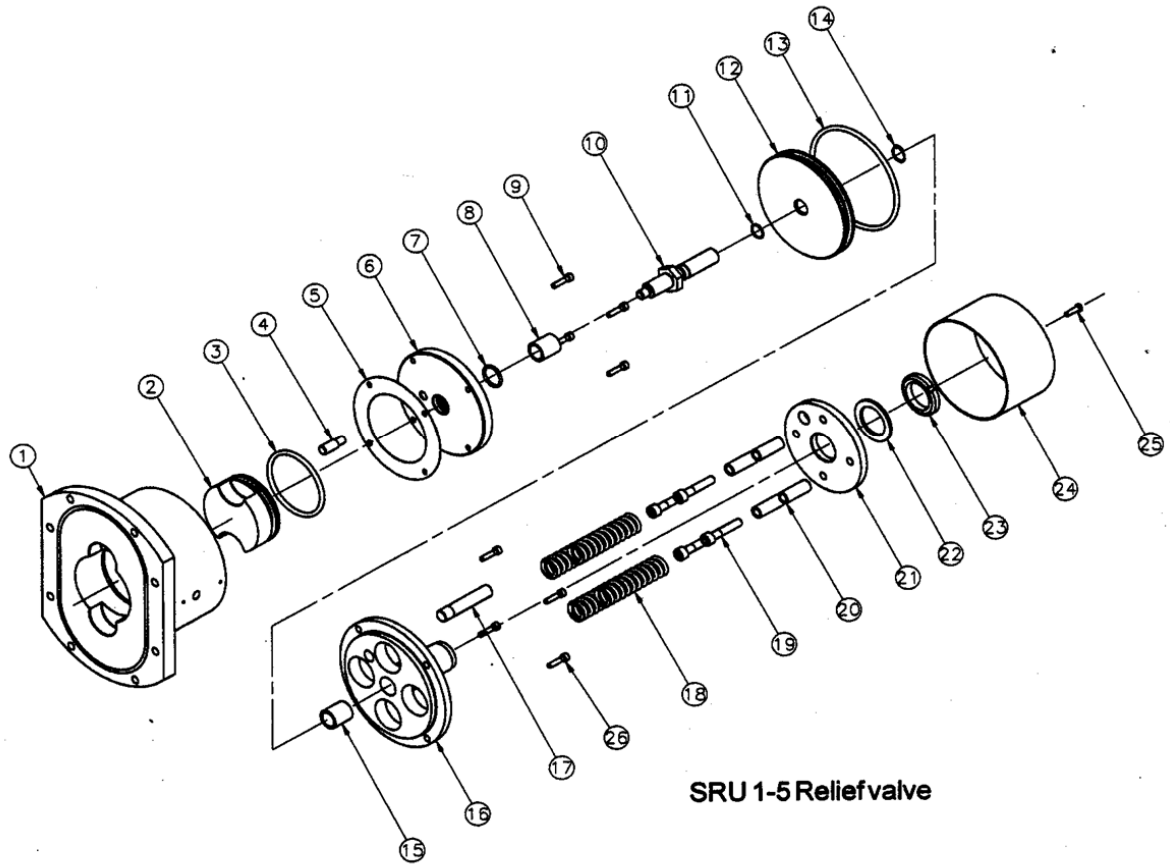


Pressure Relief Valve (Parts) - SRU1 to SRU5 Pump Models

Drg No.	Description	Qty	SRU1-3		SRU4-5		
			Part No	Item No	Part No	Item No	
1	Rotorcase cover (including 'O' ring)	1	SRU1	5131.131	9630929657	-	-
			SRU2	5131.132	9630929658	-	-
			SRU3	5131.133	9630929659	-	-
			SRU4	-	-	5131.134	9630929660
			SRU5	-	-	5131.135	9630929661
2	Hydraulic Piston	1	SRU1	6130.035	9630047336	-	-
			SRU2	6130.036	9630047338	-	-
			SRU3	6130.037	9630047340	-	-
			SRU4	-	-	6130.038	9630047649
			SRU5	-	-	6130.039	9630047651
3	'O' Ring, Hydraulic Piston	1	NBR	5380.030	9630024129	5380.028	9630024127
			EPDM	5380.410	9630043109	5380.411	9630043110
			FPM	5380.275	9630027643	5380.035	9630024131
			PTFE	5380.285	9630031605	5380.303	9630032248
4	Valve Pin	1	5170.046	9630924930	5170.047	9630924931	
5	Shim set	St. Stl.	1	6150.323	9630101745	6150.324	9630101746
6	Backstop disc		1	5135.013	9630924932	5135.014	9630924933
7	'O' Ring (NBR), Backstop disc		1	5380.269	9630027508	5380.291	9630031831
8/15	Bush		2	5060.015	9630047342	5060.016	9630047647
9	Screw, Backstop disc		4	5990.011	9630024601	5990.012	9630024603
10	Valve shaft	Standard for lever lift	1	6130.025	9630027738	6130.028	9630031808
				6130.034	9630042536	6130.033	9630042279
11	'O' Ring (NBR), Pneumatic piston		1	5380.267	9630027500	5380.289	9630031829
12	Pneumatic Piston		1	6130.027	9630026981	6130.031	9630031814
13	'O' Ring (NBR), Pneumatic piston		1	5380.268	9630027160	5380.290	9630031830
14	Circlip		1	5090.007	9630027978	5090.008	9630031833
16	Valve Guide	Standard For lever lift	1	5245.002	9630025565	5245.005	9630031816
				5245.014	9630042540	5245.012	9630042273
17	Valve Guide Pin		1	5245.004	9630027546	5245.007	9630031824
18	Spring, compression	< 10 bar > 10 bar	4	6290.017	9630029781	6290.021	9630033372
				6290.023	9630034501	6290.024	9630034502
19	Screw, spring guide		4	5990.046	9630027692	5990.024	9630024621
20	Valve spring guide		4	5245.003	9630027785	5245.006	9630031818
21	Valve spring adjuster		1	5015.009	9630027770	5015.010	9630031820
22	Washer		1	-	-	6400.048	9630035232
23	Nut		1	5340.048	9630027975	5340.049	9630031834
24	Valve housing	Standard For lever lift	1	5267.023	9630027977	5267.024	9630031822
				5267.026	9630042538	5267.025	9630042277
25	Screw, valve housing	Standard For lever lift	1	5985.001	9630027694	5985.001	9630027694
				2	6000.009	9630045083	6000.001
26	Screw, spring adjuster		4	5990.046	9630027692	5990.050	9630032120
-	Thrust washer		1	6400.055	9630042424	6400.055	9630042424
-	Nut	Lever lift only	1	5330.033	9630025350	5330.033	9630025350
-	Thrust washer adaptor		1	6400.054	9630042423	6400.054	9630042423
-	Lever sub-assembly		1	4083.023	9630045081	4083.022	9630042457

Pressure Relief Valve - Exploded View Drawing



SRU 1-5 Relief valve