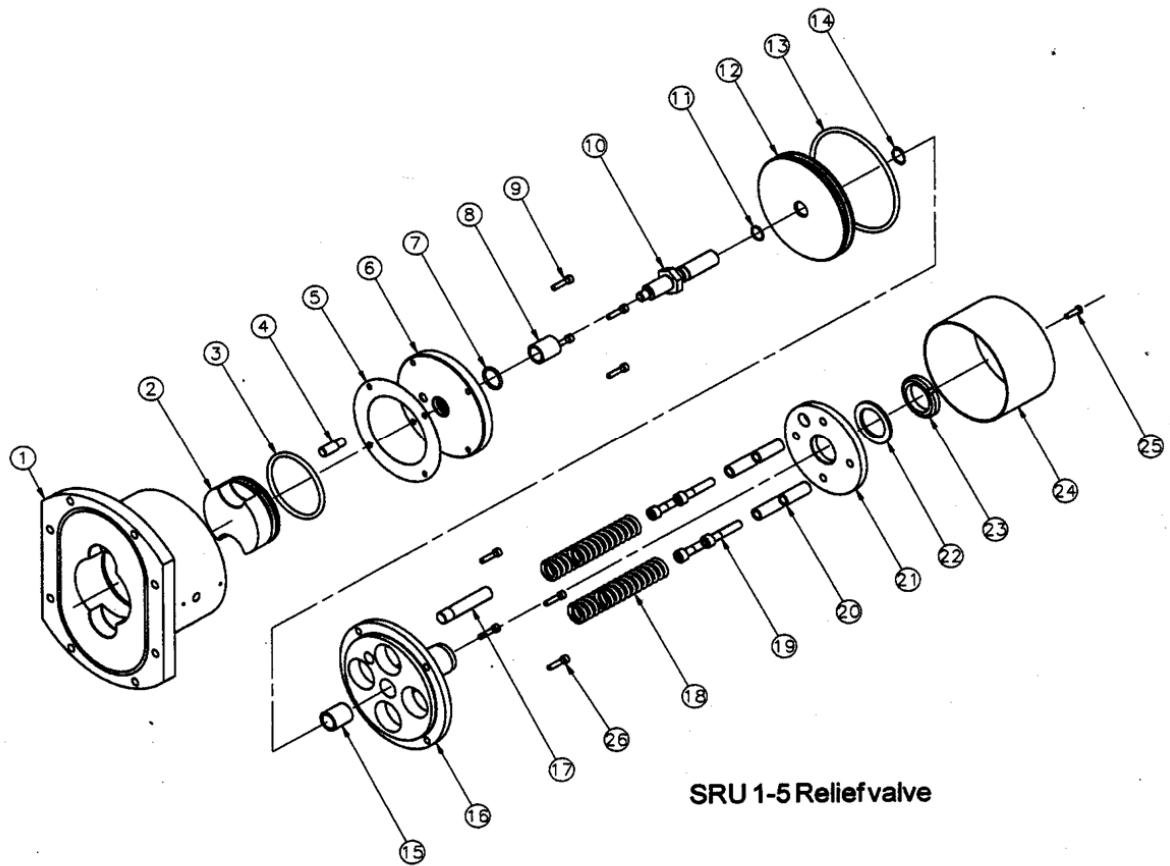


| Pressure Relief Valve (Parts) - SRU6 Pump Models | | | | | |
|--|--------------------------------------|----------|----------|------------|------------|
| Drg No. | Description | Qty | SRU6 | | |
| | | | Part No | Item No | |
| 1 | Rotorcase cover (including 'O' ring) | 1 | 5131.136 | 9630929662 | |
| 2 | Hydraulic Piston | 1 | 6130.030 | | |
| 3 | 'O' Ring, Hydraulic Piston | 1 | NBR | 5380.288 | 9630028374 |
| | | | EPDM | 5380.412 | 9630043111 |
| | | | FPM | 5380.301 | 9630032246 |
| | | | PTFE | 5380.302 | 9630032247 |
| 4 | Valve Pin | 1 | 5170.047 | 9630924931 | |
| 5 | Shim set | 1 | 6150.324 | 9630101746 | |
| 6 | Backstop disc | 1 | 5135.014 | 9630924933 | |
| 7 | 'O' Ring (NBR), Backstop disc | 1 | 5380.291 | 9630031831 | |
| 8/15 | Bush | 2 | 5060.016 | 9630047647 | |
| 9 | Screw, Backstop disc | 4 | 5990.012 | 9630024603 | |
| 10 | Valve shaft | 1 | 6130.028 | 9630031808 | |
| 11 | 'O' Ring (NBR), Pneumatic piston | 1 | 5380.289 | 9630031829 | |
| 12 | Pneumatic Piston | 1 | 6130.032 | 9630034718 | |
| 13 | 'O' Ring (NBR), Pneumatic piston | 1 | 5380.290 | 9630031830 | |
| 14 | Circlip | 1 | 5090.008 | 9630031833 | |
| 16 | Valve Guide | 1 | 5245.009 | 9630034714 | |
| 17 | Valve Guide Pin | 1 | 5245.007 | 9630031824 | |
| 18 | Spring, disc | < 7 bar | 144 | 6280.002 | 9630034726 |
| | | < 10 bar | 192 | | |
| | | < 15 bar | 216 | | |
| | | < 18 bar | 240 | | |
| 19 | Nut, spring guide | 4 | 5330.029 | 9630034725 | |
| 20 | Valve spring guide | 4 | 5245.010 | 9630034716 | |
| 21 | Valve spring adjuster | 1 | 5015.011 | 9630034712 | |
| 22 | Washer | 12 | 6400.047 | 9630034727 | |
| 23 | Nut | 1 | 5340.054 | 9630053244 | |
| 24 | Valve housing | 1 | 5267.024 | 9630031822 | |
| 25 | Screw, valve housing | 1 | 5985.001 | 9630027694 | |
| 25a | Washer, valve housing screw | 1 | 6400.046 | 9630030121 | |
| 26 | Screw, spring adjuster | 8 | 5990.050 | 9630032120 | |

Note: For SRU6 Items 1 and 2 are only available as spare parts as part of complete assembly.

| SRU6 Relief Valve Spring Arrangements | | | | |
|---------------------------------------|--------------------------------|----------------------------------|-----------------------------------|------------------------------------|
| | < 7 bar | < 10 bar | < 15 bar | < 18 bar |
| Springs arranged: | () () () () | (()) (()) (()) (()) | ((()) ((()) ((())) | ((()) ((()) ((())) |
| 1 stack = | () 2 springs 18 stacks/set | (()) 4 springs 12 stacks/set | ((()) 6 springs 9 stacks/set | ((()) 6 springs 10 stacks/set |
| Qty sets each valve: | 4 | 4 | 4 | 4 |
| Total qty springs: | 144 | 192 | 216 | 240 |

Pressure Relief Valve - Exploded View Drawing



SRU 1-5 Relief valve