



RODEM[®]

PROCESS EQUIPMENT

www.rodem.com 800-543-7312

Spare Parts

Toftejorg MultiJet 25

EPS00161-EN 2014-05

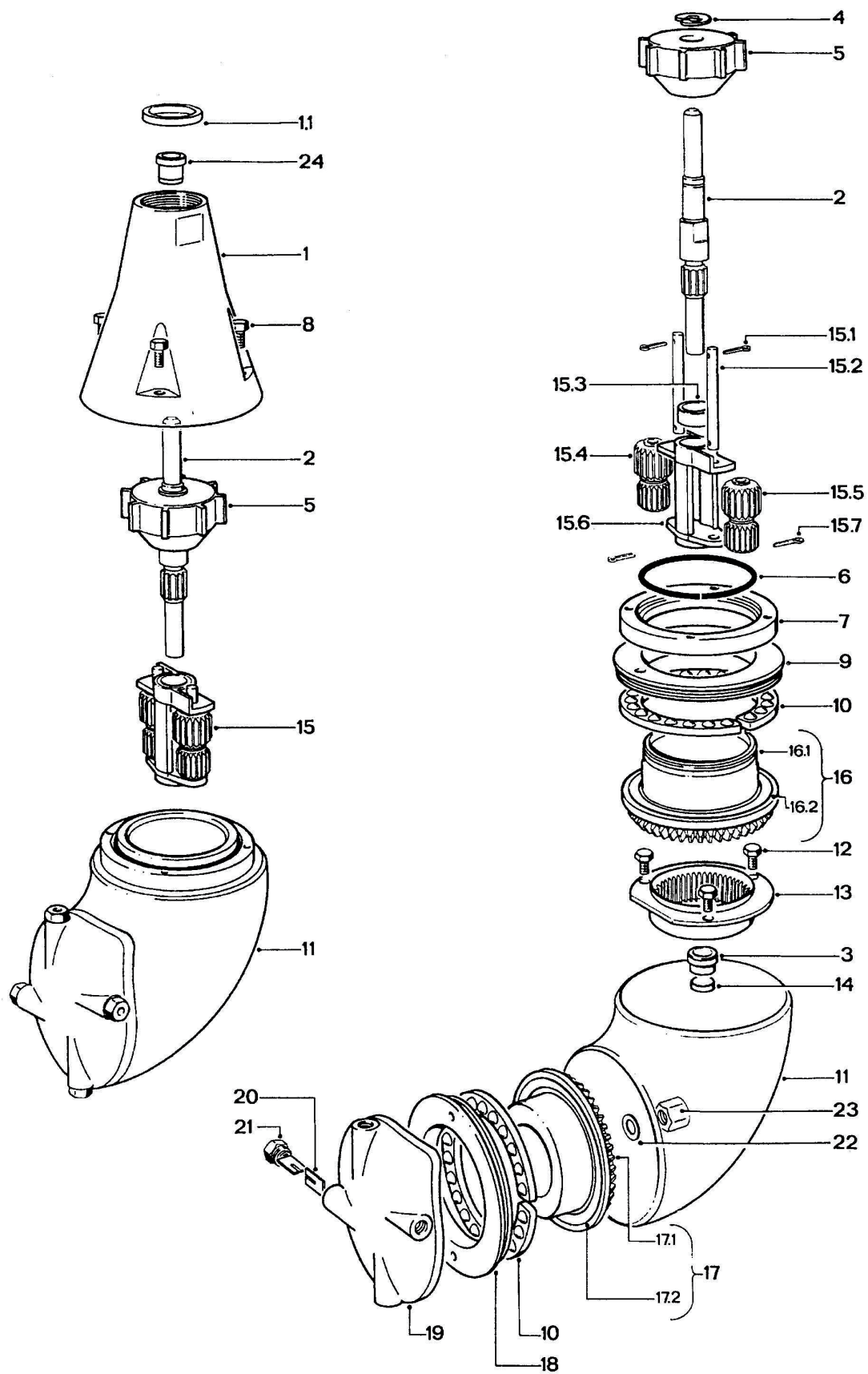
Original manual

The information herein is correct at the time of issue but may be subject to change without prior notice

1. Toftejorg MultiJet 25 4

Toftejorg MultiJet 25

Exploded view drawing, Toftejorg MultiJet 25



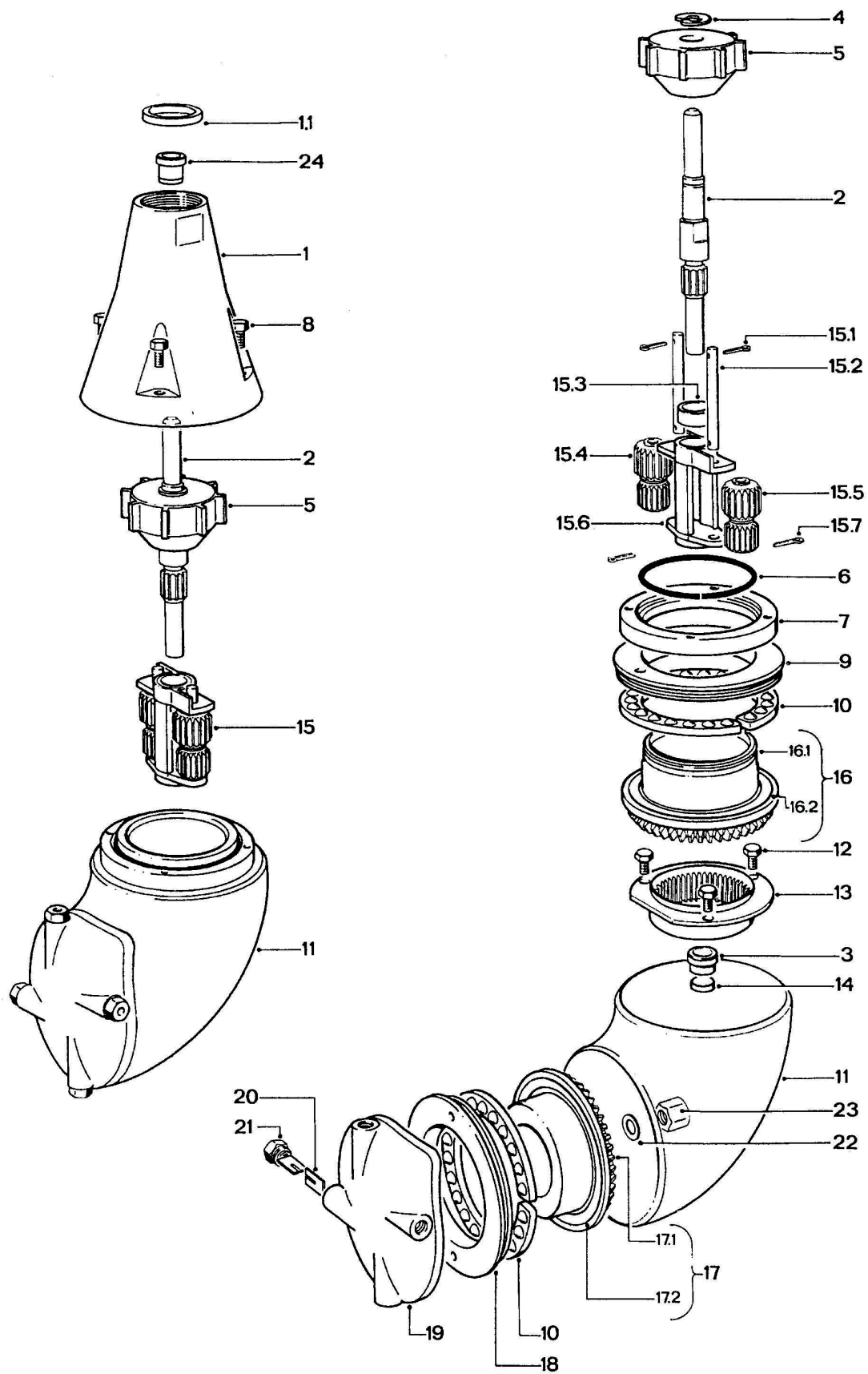
Reference List of Parts,
Toftejorg MultiJet 25

Pos	Qty	Denomination	Ref. No.
1	<input type="checkbox"/>	1 Cone 1" BSP	TE20G506
	<input type="checkbox"/>	1 Cone 1" NPT	TE20G507
2		1 Turbine shaft	TE20G550
3		1 Bearing for Turbine shaft	TE20G549
4		1 Circlip	TE51C201
5	<input type="checkbox"/>	1 Impeller (ø3.5/3.9 mm nozzle)	TE20G553
	<input type="checkbox"/>	1 Impeller (ø4.5/4.6 mm nozzle)	TE20G554
	<input type="checkbox"/>	1 Impeller (ø5.5 mm nozzle)	TE20G555
	<input type="checkbox"/>	1 Impeller (ø3.5/3.9 mm nozzle)	TE20G595
	<input type="checkbox"/>	1 Impeller (ø4.5/4.6 mm nozzle)	TE20G596
	<input type="checkbox"/>	1 Impeller (ø5.5 mm nozzle)	TE20G597
6		1 Retainer spring	TE20G565
7		1 Retaining ring	TE20G563
8		4 Screw	TE51A172
9		1 Stem nut with ball race	TE20G571
10		2 Ball retainer with balls	TE20G318
11		1 Body	TE20G511
12		3 Screw	TE51A170
13		1 Internal gear	TE20G525
14		1 Slide bearing	TE20G558
15		1 Carrier assembly	TE20G330
15.1		2 Cotter pin	TE51C102
15.2		2 Shaft for Planet wheel	TE20G541
15.3		1 Carrier bearing	TE20G545
15.4		1 Planet wheel I	TE20G535
15.5		1 Planet wheel II	TE20G536
15.6		1 Planet gear carrier	TE20G530
15.7		2 Cotter pin (= pos. 15.1)	TE51C102
16		1 Stem complete	TE20G319
16.1		1 Stem	TE20G624
16.2		1 Ball race	TE20G574
17		1 Hub complete	TE20G320
17.1		1 Hub	TE20G625
17.2		1 Ball race (= pos. 16.2)	TE20G574
18		1 Hub nut with ball race	TE20G573
19		1 Hub cover with pin	TE20G619
20		8 Nozzle vane	TE20G594
21	<input type="checkbox"/>	4 Nozzle ø3,9 mm	TE20G608
	<input type="checkbox"/>	4 Nozzle ø4,6 mm	TE20G609
	<input type="checkbox"/>	4 Nozzle ø5,5 mm	TE20G605
22		1 Washer	TE20G584
23		1 Cap nut	TE51A521
24		1 Bearing for turbine shaft top	TE20G548

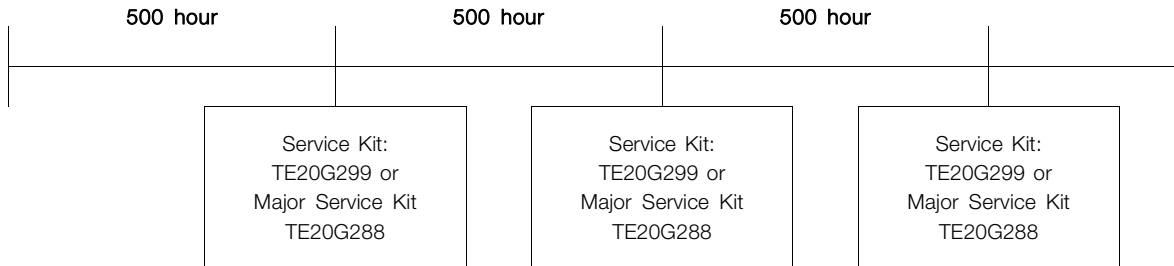
The machine can be delivered with ATEX certification

Toftejorg MultiJet 25

Exploded view drawing, Toftejorg MultiJet 25



Service intervals



Minor Service Kit for Toftejorg MultiJet 25

Article no. TE20G299

Pos	Qty	Denomination	Part No.
3	1	Bearing for Turbine shaft	TE20G549
14	1	Slide bearing	TE20G558
15.3	1	Bearing for Planet Gear carr.	TE20G545
15.4	1	Planet wheel I	TE20G535
15.5	1	Planet wheel II	TE20G536
22	1	Washer	TE20G584
24	1	Bearing for Turbine shaft top	TE20G548

Major Service Kit for MultiJet 25

Article no. TE20G288

Pos	Qty	Denomination	Part No.
3	1	Bearing for Turbine shaft	TE20G549
9	1	Stem nut with ball race	TE20G571
10	2	Ball retainer w. balls	TE20G318
14	1	Slide bearing	TE20G558
15.1	2	Cotter pin	TE51C102
15.3	1	Bearing for Planet Gear carr.	TE20G545
15.4	1	Planet wheel I	TE20G535
15.5	1	Planet wheel II	TE20G536
17.2	2	Ball race	TE20G574
18	1	Hub nut with ball race	TE20G573
22	1	Washer	TE20G584
24	1	Bearing for Turbine shaft top	TE20G548

For all machines with serial number below 0604 001, please contact your local Alfa Laval office for correct service kit.

Standard Tool Kit for Toftejorg MultiJet 25

Pos	Qty	Denomination	Tool No.
		Caliper	TE369
		Socket wrench w. pin	TE462A
		Spanner for Toftejorg TJ20G	TE81B040
		Spanner	TE81B041

How to contact Alfa Laval

Contact details for all countries are continually updated on our website.

Please visit www.alfalaval.com to access the information directly.

© Alfa Laval Corporate AB

This document and its contents is owned by Alfa Laval Corporate AB and protected by laws governing intellectual property and thereto related rights. It is the responsibility of the user of this document to comply with all applicable intellectual property laws. Without limiting any rights related to this document, no part of this document may be copied, reproduced or transmitted in any form or by any means (electronic, mechanical, photocopying, recording, or otherwise), or for any purpose, without the expressed permission of Alfa Laval Corporate AB. Alfa Laval Corporate AB will enforce its rights related to this document to the fullest extent of the law, including the seeking of criminal prosecution.