



**RODEM<sup>®</sup>**

PROCESS EQUIPMENT

[www.rodem.com](http://www.rodem.com) 800-543-7312

## Spare Parts

Toftejorg SaniJet 20, Media Driven

EPS00146-EN1 2011-01

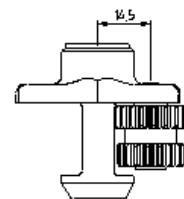
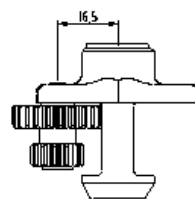
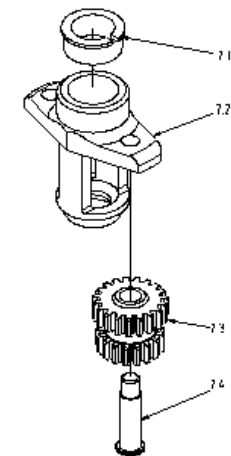
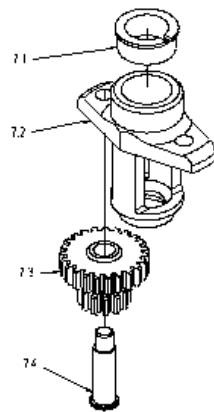
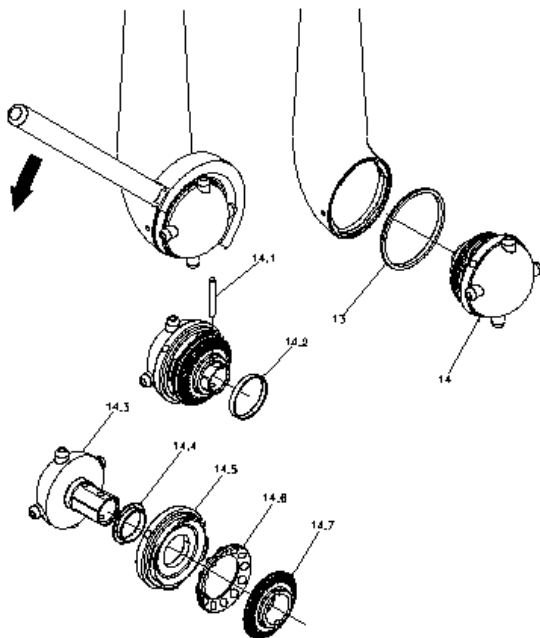
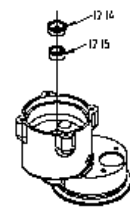
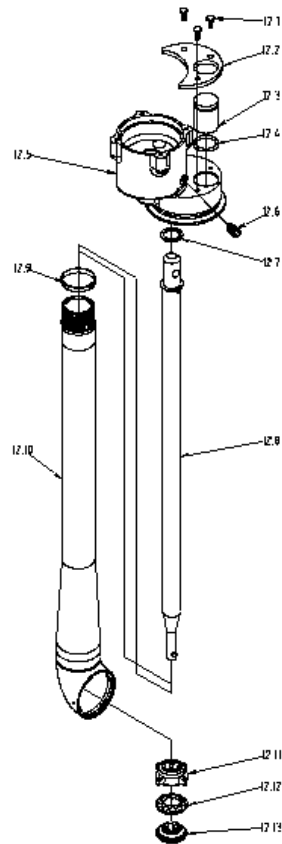
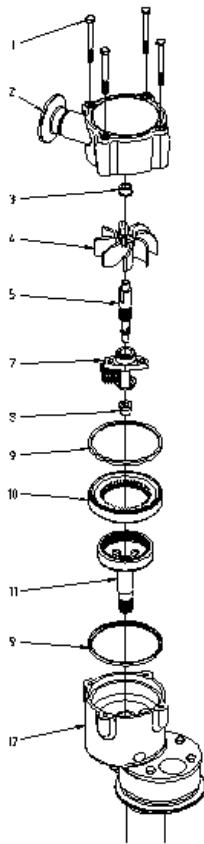
Original manual



---

*The information herein is correct at the time of issue but may be subject to change without prior notice*

**1. Toftejorg SaniJet 20, Media Driven ..... 4**

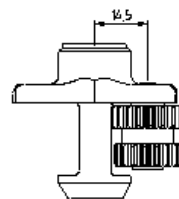
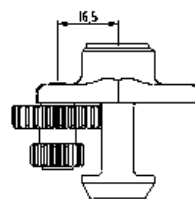
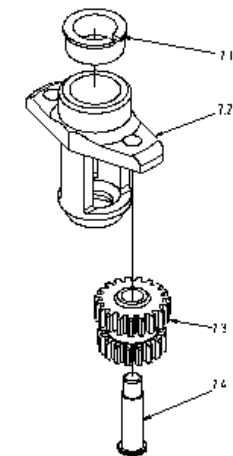
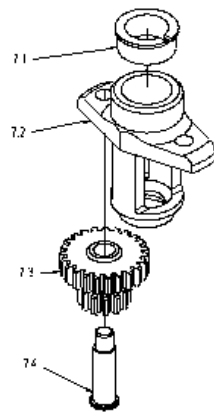
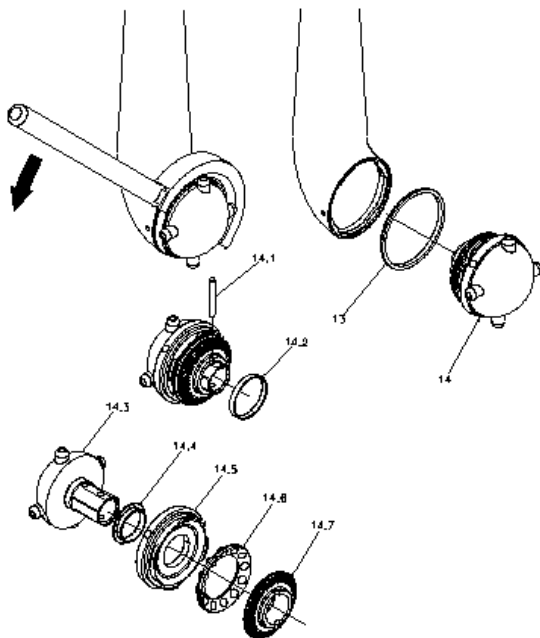
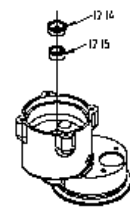
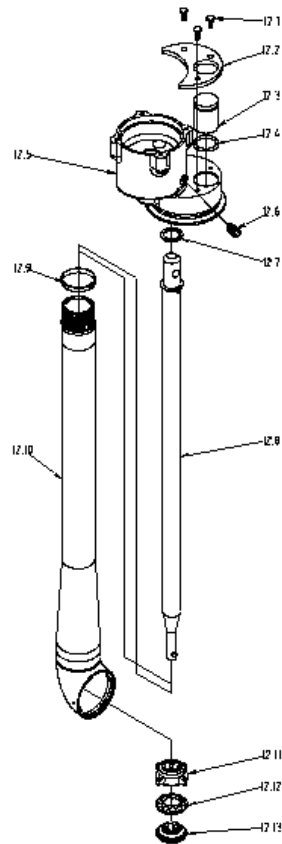
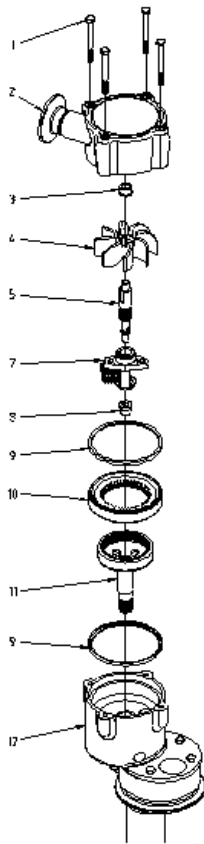


Reference list of parts

toftejorg sanijet 20, media driven with improved surface finish (EPDM as standard)

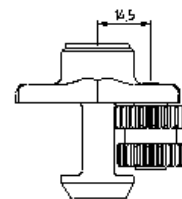
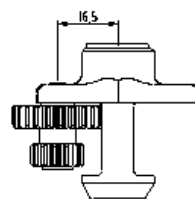
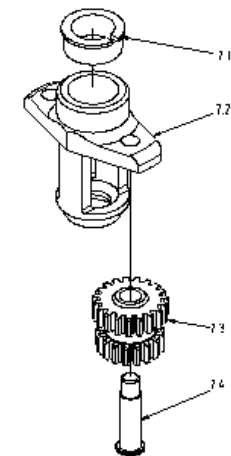
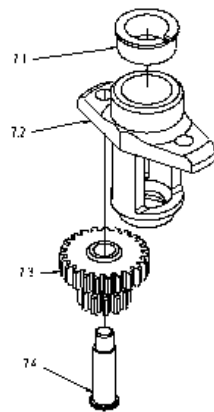
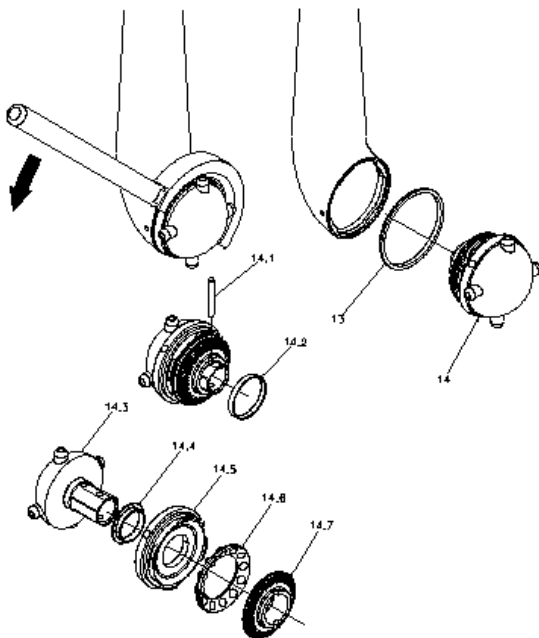
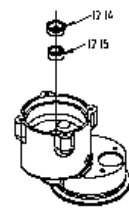
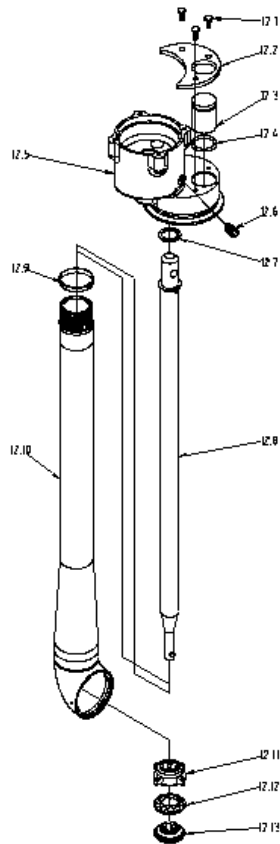
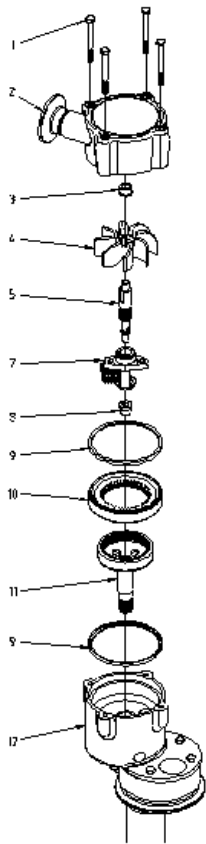
Pos	Qty	Denomination	
1	4	Screw, Stainless steel	Te51a224
2	<input type="checkbox"/>	1 Inlet cap ø23, Stainless steel	Te20b371
	<input type="checkbox"/>	1 Inlet cap ø11, Stainless steel	Te20b372
3	1	Bearing bush, Polymer	Te20b587
4	1	Impeller, Polymer	Te20b583
5	1	Impeller shaft, Stainless steel	Te20b582
7		Planet gear, Assy	
7.1	1	Bearing bush, Polymer	Te20b600
7.2	1	Planet wheel carrier, Stainless steel	Te20b589
7.3	1	Planet wheel t2, Polymer	Te20b590
	1	Planet wheel t1, Polymer	Te20b592
7.4	1	Shaft f. Planet wheel, Stainless steel	Te20b591
8	1	Bearing bush, Polymer	Te20b588
9	<input type="checkbox"/>	2 Gasket, Epdm	Te20b516
	<input type="checkbox"/>	2 Gasket, Fpm (viton)	Te20b516-01
	<input type="checkbox"/>	2 Gasket, Ffkm	Te20c516
10	1	Gear ring t1, Stainless steel	Te20b581
	1	Gear ring t2, Stainless steel	Te20b593
11	1	Output shaft, Stainless steel	Te20b598
12		Base unit, Assy	
12.1	3	Screw, Stainless steel	Te51a172
12.2	1	Bracket, Stainless steel	Te20b594
12.3	1	Plug, Stainless steel	Te20b642
12.4	1	O-ring, Epdm	Te51t127
	1	O-ring, Fpm (viton)	Te51t008
	1	O-ring, Ffkm	Te51t129
12.5	1	Base housing, Stainless steel	Te20b500
12.6	1	Retaining screw, Stainless steel	Te20b512
12.7	<input type="checkbox"/>	1 Plain seal, Epdm	Te20b511
	<input type="checkbox"/>	1 Plain seal, Fpm (viton)	Te20b511-01
	<input type="checkbox"/>	1 Plain seal, Ffkm	Te20c511
12.8	<input type="checkbox"/>	1 Inner shaft, l = 350 mm, Stainless steel	Te20b538
	<input type="checkbox"/>	1 Inner shaft, l = 500 mm, Stainless steel	Te20b532
	<input type="checkbox"/>	1 Inner shaft, l = 700 mm, Stainless steel	Te20b533
	<input type="checkbox"/>	1 Inner shaft, l = 1000 mm, Stainless steel	Te20b534
	<input type="checkbox"/>	1 Inner shaft, l = 1200 mm, Stainless steel	Te20b535
	<input type="checkbox"/>	1 Inner shaft, l = 1500 mm, Stainless steel	Te20b536
12.9	1	Bearing ring, Polymer	Te20b510
12.10	<input type="checkbox"/>	1 Outer tube, l = 350 mm, Stainless steel	Te20b310
	<input type="checkbox"/>	1 Outer tube, l = 500 mm, Stainless steel	Te20b311
	<input type="checkbox"/>	1 Outer tube, l = 700 mm, Stainless steel	Te20b312
	<input type="checkbox"/>	1 Outer tube, l = 1000 mm, Stainless steel	Te20b313
	<input type="checkbox"/>	1 Outer tube, l = 1200 mm, Stainless steel	Te20b314
	<input type="checkbox"/>	1 Outer tube, l = 1500 mm, Stainless steel	Te20b315
12.11	1	Ball race, Stainless steel	Te20b539
12.12	1	Ball ring, Polymer/stainless steel	Te20b360
12.13	1	Bevel gear, Stainless steel	Te20b542
12.14	1	Bearing bush, Polymer	Te20b513
12.15	1	Bearing bush, Polymer	Te20b514
13	<input type="checkbox"/>	1 Seal ring h, Epdm	Te20b553
	<input type="checkbox"/>	1 Seal ring h, Fpm (viton)	Te20b553-01
	1	Seal ring h, Ffkm	Te20c553
14	<input type="checkbox"/>	1 Cleaner unit, 2xø2.0mm, Assy	Te20b324
	<input type="checkbox"/>	1 Cleaner unit, 2xø3.8mm, Assy	Te20b325
	<input type="checkbox"/>	1 Cleaner unit, 4xø4.2mm, Assy	Te20b326
14.1	1	Pin, Stainless steel	Te51c003
14.2	1	Clip ring, Stainless steel	Te20b571
14.3	<input type="checkbox"/>	1 Cleaner head 2xø2.0mm, Stainless steel	Te20b334
	<input type="checkbox"/>	1 Cleaner head 2xø3.8mm, Stainless steel	Te20b335
	<input type="checkbox"/>	1 Cleaner head 4xø4.2mm, Stainless steel	Te20b336
14.4	1	Bearing bush, Polymer	Te20b554
14.5	1	Retaining ring, Stainless steel	Te20b552
14.6	1	Ball ring n, Polymer/stainless steel	Te20b361
14.7	1	Bevel gear, Stainless steel	Te20b550

Configuration as delivered marked



Pos	Qty	Denomination	Item no.
1	4	Screw, Stainless steel	Te51a224
2	<input type="checkbox"/>	1 Inlet cap , Stainless steel	Te20e371
	<input type="checkbox"/>	1 Inlet cap , Stainless steel	Te20e372
3	1	Bearing bush, Polymer	Te20b587
4	1	Impeller, Polymer	Te20b583
5	1	Impeller shaft, Stainless steel	Te20e582
7		Planet gear, Assy	
7.1	1	Bearing bush, Polymer	Te20b600
7.2	1	Planet wheel carrier, Stainless steel	Te20e589
7.3	<input type="checkbox"/>	1 Planet wheel t2, Polymer	Te20b590
	<input type="checkbox"/>	1 Planet wheel t1, Polymer	Te20b592
7.4	1	Shaft f. Planet wheel, Stainless steel	Te20e591
8	1	Bearing bush, Polymer	Te20b588
9	<input type="checkbox"/>	2 Gasket, Epdm	Te20b516
	<input type="checkbox"/>	2 Gasket, Ffkm	Te20c516
10	<input type="checkbox"/>	1 Gear ring t1, Stainless steel	Te20e581
	<input type="checkbox"/>	1 Gear ring t2, Stainless steel	Te20e593
11	1	Output shaft, Stainless steel	Te20e598
12		Base unit, Assy	
12.1	3	Screw, Stainless steel	Te51a172
12.2	1	Bracket, Stainless steel	Te20e594
12.3	1	Plug, Stainless steel	Te20e642
12.4	<input type="checkbox"/>	1 O-ring, Epdm	Te51t127
	<input type="checkbox"/>	1 O-ring, Ffkm	Te51t129
12.5	1	Base housing, Stainless steel	Te20e500
12.6	1	Retaining screw, Stainless steel	Te20b512
12.7	<input type="checkbox"/>	1 Plain seal, Epdm	Te20b511
	<input type="checkbox"/>	1 Plain seal, Ffkm	Te20c511
12.8	<input type="checkbox"/>	1 Inner shaft, l = 350 mm, Stainless steel	Te20e538
	<input type="checkbox"/>	1 Inner shaft, l = 500 mm, Stainless steel	Te20e532
	<input type="checkbox"/>	1 Inner shaft, l = 700 mm, Stainless steel	Te20e533
	<input type="checkbox"/>	1 Inner shaft, l = 1000 mm, Stainless steel	Te20e534
	<input type="checkbox"/>	1 Inner shaft, l = 1200 mm, Stainless steel	Te20e535
	<input type="checkbox"/>	1 Inner shaft, l = 1500 mm, Stainless steel	Te20e536
12.9	1	Bearing ring, Polymer	Te20b510
12.10	<input type="checkbox"/>	1 Outer tube, l = 350 mm, Stainless steel	Te20e310
	<input type="checkbox"/>	1 Outer tube, l = 500 mm, Stainless steel	Te20e311
	<input type="checkbox"/>	1 Outer tube, l = 700 mm, Stainless steel	Te20e312
	<input type="checkbox"/>	1 Outer tube, l = 1000 mm, Stainless steel	Te20e313
	<input type="checkbox"/>	1 Outer tube, l = 1200 mm, Stainless steel	Te20e314
	<input type="checkbox"/>	1 Outer tube, l = 1500 mm, Stainless steel	Te20e315
12.11	1	Ball race, Stainless steel	Te20e539
12.12	1	Ball ring, Polymer/stainless steel	Te20b360
12.13	1	Bevel gear, Stainless steel	Te20e542
12.14	1	Bearing bush, Polymer	Te20b513
12.15	1	Bearing bush, Polymer	Te20b514
13	<input type="checkbox"/>	1 Seal ring h, Epdm	Te20b553
	<input type="checkbox"/>	1 Seal ring h, Ffkm	Te20c553
14	<input type="checkbox"/>	1 Cleaner unit, 2xø2.0mm, Assy	Te20e324
	<input type="checkbox"/>	1 Cleaner unit, 2xø3.8mm, Assy	Te20e325
	<input type="checkbox"/>	1 Cleaner unit, 4xø4.2mm, Assy	Te20e326
14.1	1	Pin, Stainless steel	Te20b572
14.2	1	Clip ring, Stainless steel	Te20e571
14.3	<input type="checkbox"/>	1 Cleaner head 2xø2.0mm, Stainless steel	Te20e334
	<input type="checkbox"/>	1 Cleaner head 2xø3.8mm, Stainless steel	Te20e335
	<input type="checkbox"/>	1 Cleaner head 4xø4.2mm, Stainless steel	Te20e336
14.4	1	Bearing bush, Polymer	Te20b554
14.5	1	Retaining ring, Stainless steel	Te20e552
14.6	1	Ball ring n, Polymer/stainless steel	Te20b361
14.7	1	Bevel gear, Stainless steel	Te20e550

Configuration as delivered marked

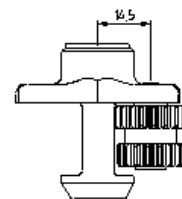
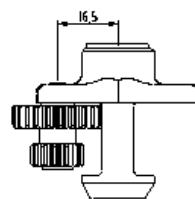
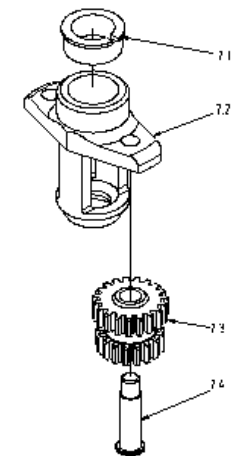
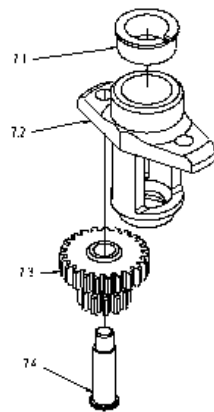
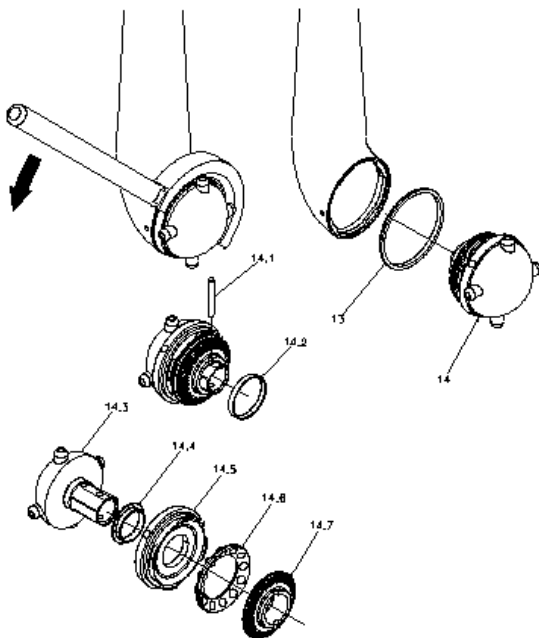
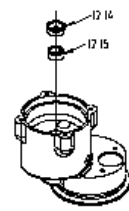
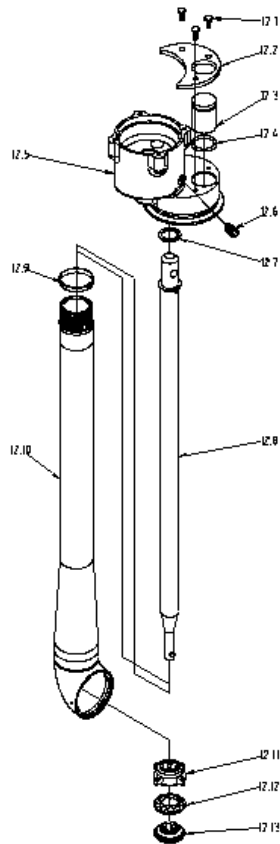
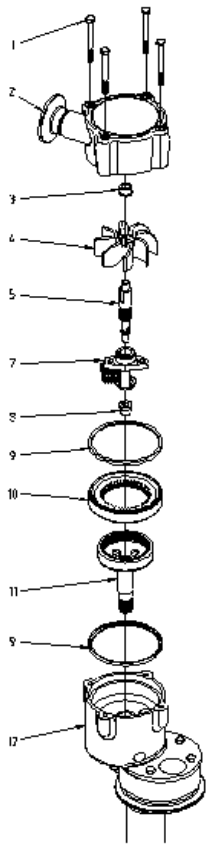




Reference list of parts

toftejorg sanijet 20, media driven, hastelloy version (ffkm as standard)

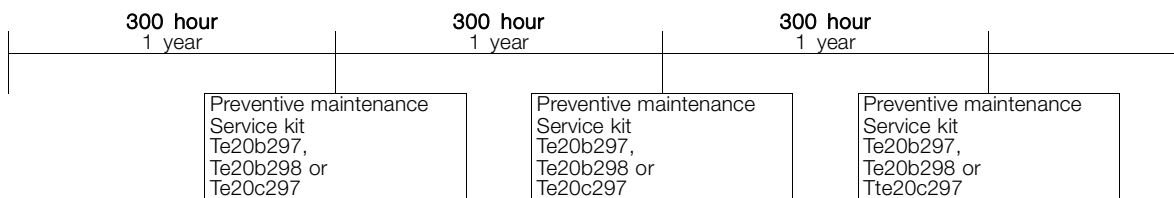
Pos	Qty	Denomination	Item no.
1	4	Screw, Stainless steel	Te51a224
2	1	Inlet cap ø23, Alloy	Te20c371
	1	Inlet cap ø11, Alloy	Te20c372
3	1	Bearing bush, Polymer	Te20b587
4	1	Impeller, Polymer	Te20b583
5	1	Impeller shaft , Alloy	Te20c582
7		Planet gear, Assy	
7.1	1	Bearing bush, Polymer	Te20b600
7.2	1	Planet wheel carrier, Alloy	Te20c589
7.3	1	Planet wheel t2, Polymer	Te20b590
	1	Planet wheel t1, Polymer	Te20b592
7.4	1	Shaft f. Planet wheel, Alloy	Te20c591
8	1	Bearing bush, Polymer	Te20b588
9	2	Gasket, Ffkm	Te20c516
10	1	Gear ring t1, Alloy	Te20c581
	1	Gear ring t2, Alloy	Te20c593
11	1	Output shaft, Alloy	Te20c598
12		Base unit, Assy	
12.1	3	Screw, Stainless steel	Te51a172
12.2	1	Bracket, Stainless steel	Te20b594
12.3	1	Plug, Alloy	Te20c642
12.4	1	O-ring, Ffkm	Te51t129
12.5	1	Base housing, Alloy	Te20c500
12.6	1	Retaining screw, Stainless steel	Te20b512
12.7	1	Plain seal, Ffkm	Te20c511
12.8	1	Inner shaft, l = 350 mm, Alloy	Te20c538
	1	Inner shaft, l = 500 mm, Alloy	Te20c532
	1	Inner shaft, l = 700 mm, Alloy	Te20c533
	1	Inner shaft, l = 1000 mm, Alloy	Te20c534
	1	Inner shaft, l = 1200 mm, Alloy	Te20c535
	1	Inner shaft, l = 1500 mm, Alloy	Te20c536
12.9	1	Bearing ring, Polymer	Te20b510
12.10	1	Outer tube, l = 350 mm, Alloy	Te20c310
	1	Outer tube, l = 500 mm, Alloy	Te20c311
	1	Outer tube, l = 700 mm, Alloy	Te20c312
	1	Outer tube, l = 1000 mm, Alloy	Te20c313
	1	Outer tube, l = 1200 mm, Alloy	Te20c314
	1	Outer tube, l = 1500 mm, Alloy	Te20c315
12.11	1	Ball race, Alloy	Te20c539
12.12	1	Ball ring, Polymer/alloy	Te20c360
12.13	1	Bevel gear, Alloy	Te20c542
12.14	1	Bearing bush, Polymer	Te20b513
12.15	1	Bearing bush, Polymer	Te20b514
13	1	Seal ring h, Ffkm	Te20c553
14	1	Cleaner unit, 2xø2.0mm, Assy	Te20c324
	1	Cleaner unit, 2xø3.8mm, Assy	Te20c325
	1	Cleaner unit, 4xø4.2mm, Assy	Te20c326
14.1	1	Pin, Alloy	Te20c655
14.2	1	Clip ring, Alloy	Te20c571
14.3	1	Cleaner head 2xø2.0mm, Alloy	Te20c334
	1	Cleaner head 2xø3.8mm, Alloy	Te20c335
	1	Cleaner head 4xø4.2mm, Alloy	Te20c336
14.4	1	Bearing bush, Polymer	Te20b554
14.5	1	Retaining ring, Alloy	Te20c552
14.6	1	Ball ring n, Polymer/alloy	Te20c361
14.7	1	Bevel gear, Alloy	Te20c550

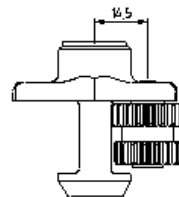
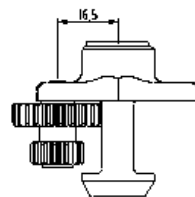
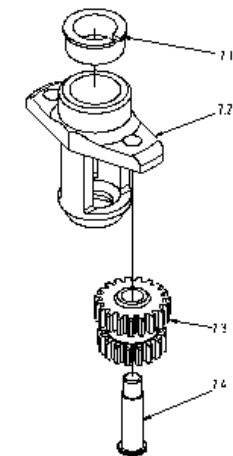
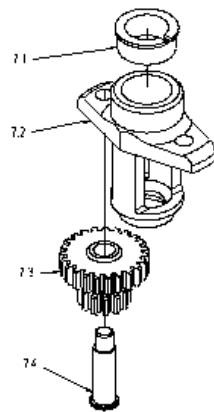
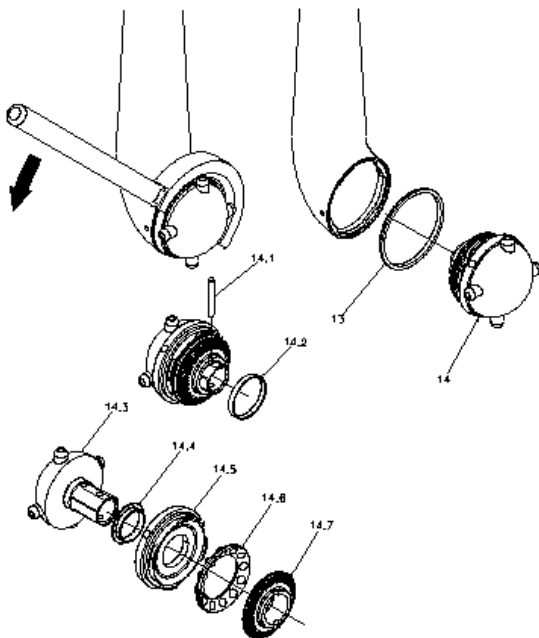
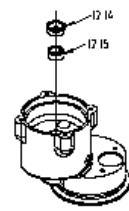
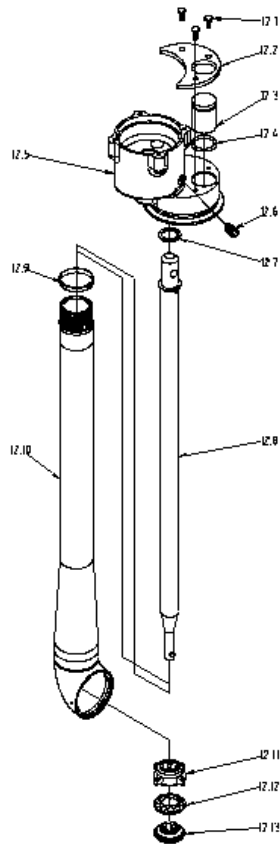
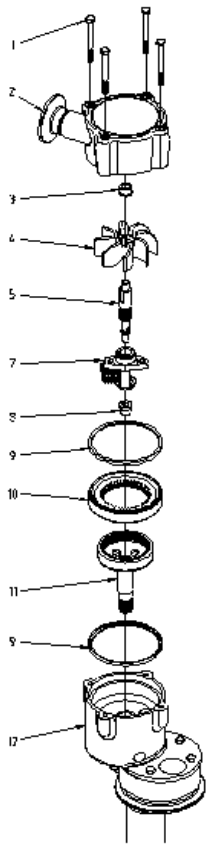


Available add-on's for spare parts

item no.	Description
Te20xxx-90	<ul style="list-style-type: none"> <li>• <b>Declaration of compliance:</b> <ul style="list-style-type: none"> <li>- en 10204 type 3.1 inspection certificate</li> <li>- fda declaration of compliance</li> <li>- usp class vi (if possible)</li> <li>- tse declaration</li> </ul> </li> </ul>
Te20xxx-91 For fpm seals only	<ul style="list-style-type: none"> <li>• <b>Declaration of compliance:</b> <ul style="list-style-type: none"> <li>- en 10204 type 3.1 inspection certificate</li> <li>- fda declaration of compliance</li> <li>- usp class vi (if possible)</li> <li>- tse declaration</li> </ul> </li> </ul>
Te20xxx-50  Inner shaft pos no. 12.8 and outer pipe pos no. 12.10 only	<ul style="list-style-type: none"> <li>• <b>Declaration of compliance:</b> <ul style="list-style-type: none"> <li>- en 10204 type 3.1 inspection certificate</li> </ul> </li> <li>• <b>FDA declaration of compliance</b> <ul style="list-style-type: none"> <li>- usp class vi (if possible)</li> <li>- tse declaration</li> </ul> </li> <li>• <b>Weld-log documentation (if necessary) as hardcopy</b></li> </ul>

Service intervals





Service kit in epdm for toftejorg sanijet 20 media driven version

Pos	Qty	Denomination	Item no.
3	1	Bearing bushing m, Epdm .....	Te20b587
7.1	1	Bearing bushing d1, Epdm .....	Te20b600
8	1	Bearing bushing , Epdm .....	Te20b588
9	2	Gasket d, Epdm .....	Te20b516
12.4	1	O-ring , Epdm .....	Te51t127
12.7	1	Plain seal s, Epdm .....	Te20b511
12.9	1	Bearing ring, top, Epdm .....	Te20b510
12.14	1	Bearing bush d1, Epdm .....	Te20b513
12.15	1	Bearing bush d2, Epdm .....	Te20b514
13	1	Seal ring h, Epdm .....	Te20b553
14.4	1	Bearing bush, Epdm .....	Te20b554

Service kit in viton for toftejorg sanijet 20 media driven version

Pos	Qty	Denomination	Item no.
3	1	Bearing bushing m, Fpm .....	Te20b587
7.1	1	Bearing bushing d1, Fpm .....	Te20b600
8	1	Bearing bushing , Fpm .....	Te20b588
9	2	Gasket d, Fpm .....	Te20b516-01
12.4	1	O-ring , Fpm .....	Te51t008
12.7	1	Plain seal s, Fpm .....	Te20b511-01
12.9	1	Bearing ring, top, Fpm .....	Te20b510
12.14	1	Bearing bush d1, Fpm .....	Te20b513
12.15	1	Bearing bush d2, Fpm .....	Te20b514
13	1	Seal ring h, Fpm .....	Te20b553-01
14.4	1	Bearing bush, Fpm .....	Te20b554

Service kit in ffk (perlast) for toftejorg sanijet 20 media driven version

Pos	Qty	Denomination	Item no.
3	1	Bearing bushing m, Ffkm .....	Te20b587
7.1	1	Bearing bushing d1, Ffkm .....	Te20b600
8	1	Bearing bushing , Ffkm .....	Te20b588
9	2	Gasket d, Ffkm .....	Te20c516
12.4	1	O-ring , Ffkm .....	Te51t129
12.7	1	Plain seal s, Ffkm .....	Te20c511
12.9	1	Bearing ring, top, Ffkm .....	Te20b510
12.14	1	Bearing bush d1, Ffkm .....	Te20b513
12.15	1	Bearing bush d2, Ffkm .....	Te20b514
13	1	Seal ring h, Ffkm .....	Te20c553
14.4	1	Bearing bush, Ffkm .....	Te20b554

Tools

Pos	Qty	Denomination	Reference no.
		Socket wrench w. Pin .....	Te462a
		Hook spanner .....	Te20b701

**How to contact Alfa Laval**

Contact details for all countries are continually updated on our website.

Please visit [www.alfalaval.com](http://www.alfalaval.com) to access the information directly.

© Alfa Laval Corporate AB

This document and its contents is owned by Alfa Laval Corporate AB and protected by laws governing intellectual property and thereto related rights. It is the responsibility of the user of this document to comply with all applicable intellectual property laws. Without limiting any rights related to this document, no part of this document may be copied, reproduced or transmitted in any form or by any means (electronic, mechanical, photocopying, recording, or otherwise), or for any purpose, without the expressed permission of Alfa Laval Corporate AB. Alfa Laval Corporate AB will enforce its rights related to this document to the fullest extent of the law, including the seeking of criminal prosecution.