

# Alfa Laval SB Mini Flow Valve

## Single seat valves

---

### Introduction

The Alfa Laval SB Mini Flow Valve is a reliable single seat valve with a single contact surface between the plug and the seat to minimize the risk of contamination. Designed for working in a gas or liquid environment, it is used to close or divert small product flows when hygienic shut off and changeover are required.

### Application

The SB Mini Flow Valve is designed for diverting or closing small product flows in a broad range of applications across the brewery, food, dairy, beverage and many other industries. The valve can be used as an integral part of a SCANDI BREW® tank top system.

### Benefits

- Versatile shut-off or changeover valve
- Handles small flows of liquid or gas with ease
- Compact and hygienic design
- Low maintenance
- Fast-acting

### Standard design

The SB Mini Flow Valve comprises a valve body, inlet and outlet, with threaded pipe couplings for 6/8 mm pipe. Four versions are available: a pneumatic angle valve, a pneumatic two-way valve, a drain valve with fittings, or a drain valve with fittings and clip-on. The valve can also be used as an integral part of a SCANDI BREW® tank top system.

### Working principle

The Alfa Laval SB Mini Flow Valve is operated either manually or by means of compressed air from a remote location. For a



pneumatic valve, the actuator smooths operation and protects process lines from pressure peaks.

## TECHNICAL DATA

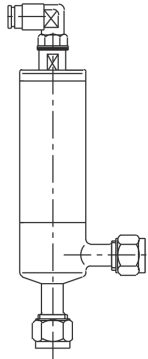
### Pressure

|                        |           |
|------------------------|-----------|
| Max. product pressure: | 6 bar     |
| Process air pressure:  | 6 - 8 bar |

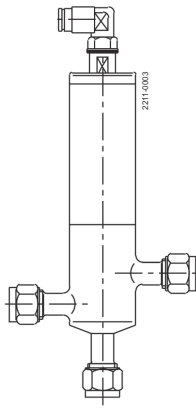
## PHYSICAL DATA

### Materials

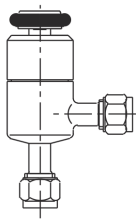
|                                |                       |
|--------------------------------|-----------------------|
| Product wetted steel surfaces: | EN 1.4404 (AISI 316L) |
| Product wetted seals:          | EPDM                  |
| Product wetted polymers:       | PTFE                  |



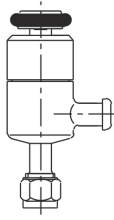
Pneumatic angle valve



Pneumatic 2-way valve

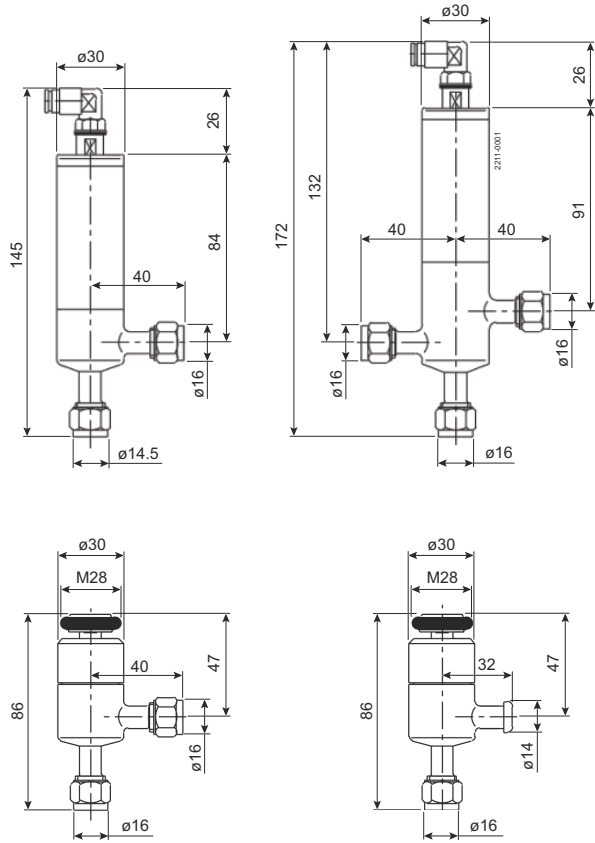


Drain valve with fittings



Drain valve with fittings/clip-on

## Dimensions (mm)



This document and its contents are subject to copyrights and other intellectual property rights owned by Alfa Laval Corporate AB. No part of this document may be copied, re-produced or transmitted in any form or by any means, or for any purpose, without Alfa Laval Corporate AB's prior express written permission. Information and services provided in this document are made as a benefit and service to the user, and no representations or warranties are made about the accuracy or suitability of this information and these services for any purpose. All rights are reserved.

200003997-1-EN-GB

© Alfa Laval Corporate AB

### How to contact Alfa Laval

Up-to-date Alfa Laval contact details for all countries are always available on our website at [www.alfalaval.com](http://www.alfalaval.com)