



**SANISMA RT**  
SOLUTIONS

**SYSTEMS  
INTEGRATION**



Visit us at [www.rodem.com](http://www.rodem.com)

**Rodem's team of process engineers, fabrication and installation technicians takes the sanitary equipment we represent and pieces them together to complete your process system requirements. This team has extensive plant experience to offer proven solutions.**

- Our Process Engineers focus on the cleanability and efficiency of designs, and have the know-how to solve your CIP and processing problems.
- Rodem's Installation team is certified to ASME D18 standards, so we understand the ins and outs of high-purity welding.
- Our Fabrication crew and shop ensure minimal interruption to your process. We know that every minute counts when your lines are down, that's why we plan and execute accordingly, always keeping your production schedule in mind.

Partner with Rodem and learn how we can put together the components for a smarter sanitary process.

#### **START UP SERVICE**

In today's rapidly changing world, keeping up with technology is a challenge. Rodem has technicians available to assist your start-up with any of the products we sell. We believe the smooth start-up of a component or system sets the stage for the customer's happiness, long term, with their purchase.

#### **PRODUCT INSTALLATION**

Rodem's Installation and Fabrication technicians have the credentials to handle everything from a simple weekend tie-in to installing a full system on a 10,000 man-hour project. Our certified crews have years of experience with a variety of in-plant installation projects. We understand the production conflicts that can create major stumbling blocks to your schedule and quickly resolve those issues.

#### **PROCESS ENGINEERING**

Let us put our process engineering expertise to use for you. By requesting a consultation with one of our process integration experts you can learn about improving the efficiency of your sanitary process through their vast in-plant experience.

#### **SANITARY DESIGN**

Our design team is able to create a custom solution for your application. We know the design phase can be one of the most challenging, but we can help. We have spent more than five decades perfecting Sanitary Design. Our staff knows the importance of understanding your end goal. Reaching the goal starts with a great plan.

#### **CIP DESIGN**

With our proven CIP Design expertise we can help ensure that your process will reap the benefits of clean in place. Designing the right CIP System will save you money, improve your product, shorten your downtime, allowing for more production and improve your product shelf life.

#### **FABRICATION**

Rodem maintains staffed fabrication facilities at which we can support immediate fabrication requirements. The vast skill level of our technicians allows us to handle anything from the most basic special fitting fabrication to the intricate nature of a complex modular skid system.

Our shop fabrication crew ensures minimal interruption to your process. Our team plans and executes projects with your production schedule in mind. Every minute counts when your lines are down.

#### **SKID SYSTEMS**

Since our inception in 1971, we have realized the benefits of pre-fabricating modular systems in our facility and minimizing the impact on production at our customer's facilities. Our team can design, build and install the right Skid System for your process.



### Safe & Efficient Crew

- Certified Welders
- Detailed Quality Control Procedures
- Internal Weld Inspection Procedures
- Dedicated Project Management & Site Supervision

### Sanitary Design Focus

- Process Efficiency
- Process Controls
- Process Yield
- CIP Design & Maximization
- Mixing Technology
- Heat Exchange

### Installation Services

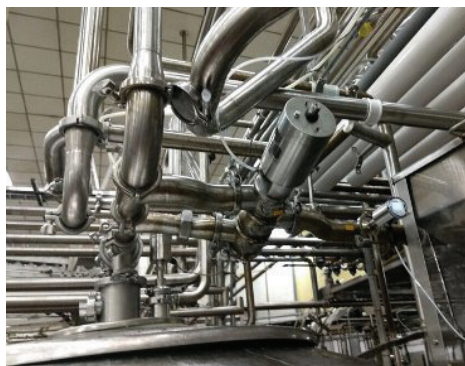
- High Purity Orbital Welding
- Boroscoping
- Hydrostatic Testing
- Operational Testing
- Passivation & Cleaning
- Validation Testing

### Skidded Systems

- Clean-In-Place (CIP)
- Steam-In-Place (SIP)
- WFI: High Purity Water
- Filtration
- Separation
- Ozone
- Isotonic
- Aseptic Process
- Hot Fill
- Mixing & Blending
- Continuous Blending
- High Shear Mixing
- Pump Carts
- Mixproof Valve Manifolds

### Process Engineering Expertise

- Plant Layout Assistance
- Process Block Diagrams/Process Matrix
- Process P&ID's/Flowsheets with Color Highlighted CIP Circuits
- Equipment & Material Specification & Layout
- Process Design
- Modular Design
- Skidded Systems
- Piping Orthographic & Isometrics
- Weld Maps & Material Certifications
- Start Up Services
- Process Automation & Functional Descriptions
- Passivation



**Cincinnati Headquarters:**  
800-543-7312  
**Columbus:** 855-276-6091  
**Indianapolis:** 800-527-7151

**Knoxville:** 800-778-0023  
**Nashville:** 800-362-7339  
**Raleigh:** 855-745-0322  
**Toledo:** 800-996-4574

